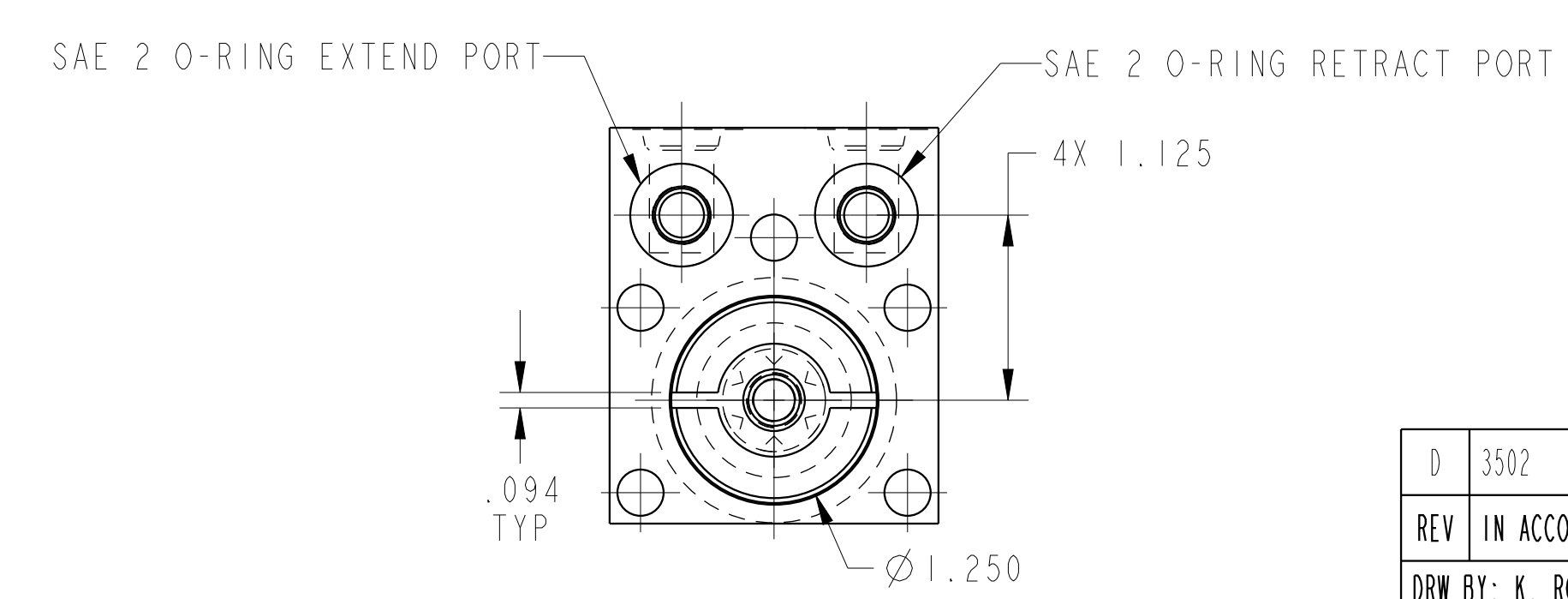
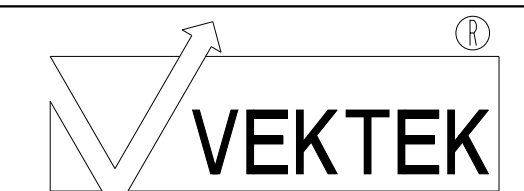


ILC14220901LPR REV D ECN 3502



CAD CONTROL
DRAWING



VEKTEK, INC.
1334 E. SIXTH AVE. P.O. BOX 625
EMPORIA, KS. 66801 U.S.A.

D	3502	RELEASE	ATHOMSEN	12-JUN-2018	14220901LPR	A	SC, BF, DA, HS, LH, PR, 1100
REV	IN ACCORDANCE WITH ECN	EFFECTIVE DATE	REVISED BY	DATE	REFERENCE MODEL	REF REV	***
DRW BY:	K. ROEMER	DRAWING STATUS: Released			TOLERANCES DO NOT APPLY DIMENSIONS ARE NOMINAL		SIZE D
DATE:	07-25-05	PRODUCTION APPROVED FOR RELEASED STATUS ONLY			FORM FEG036, Rev. B		REV D