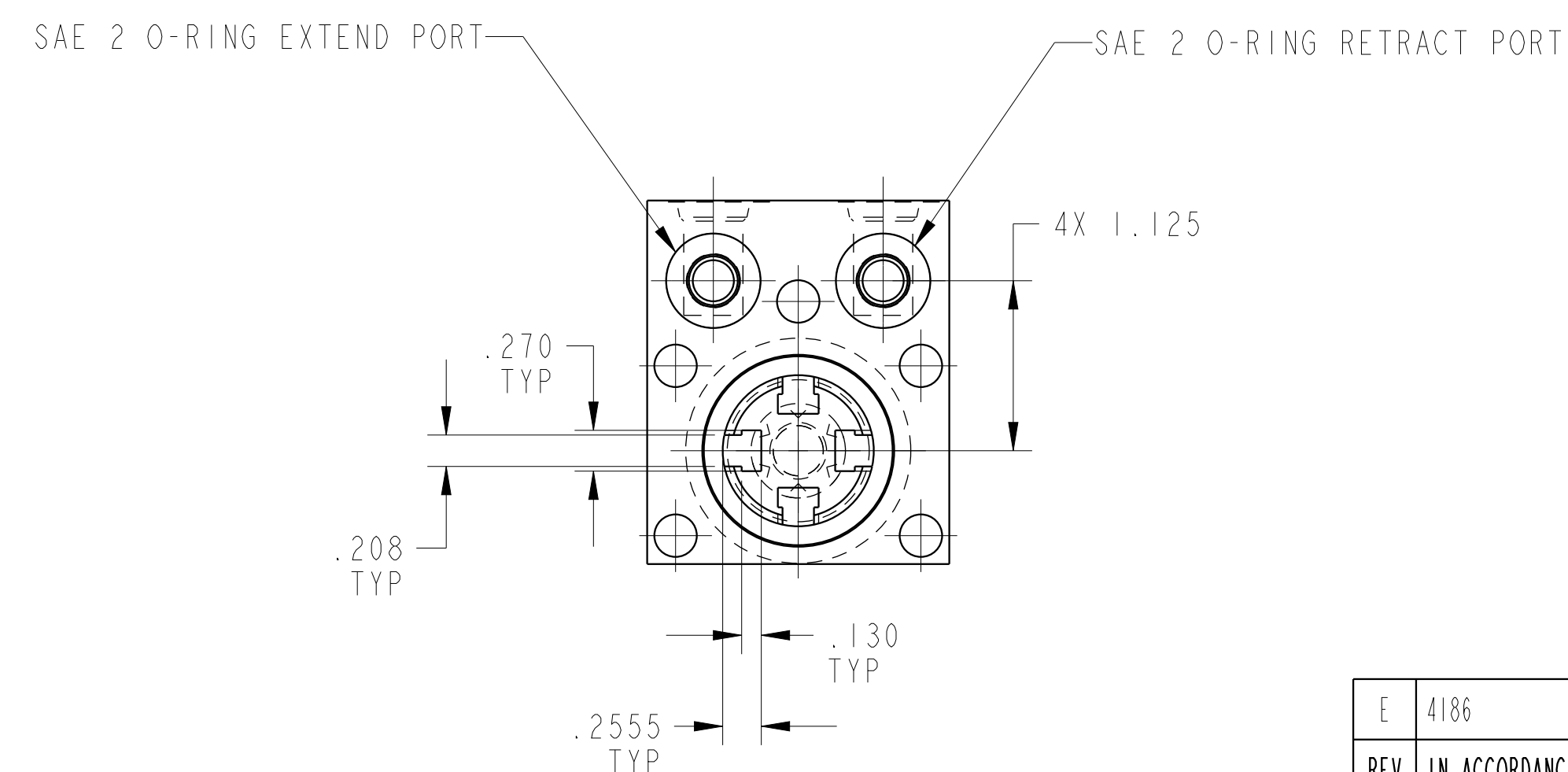
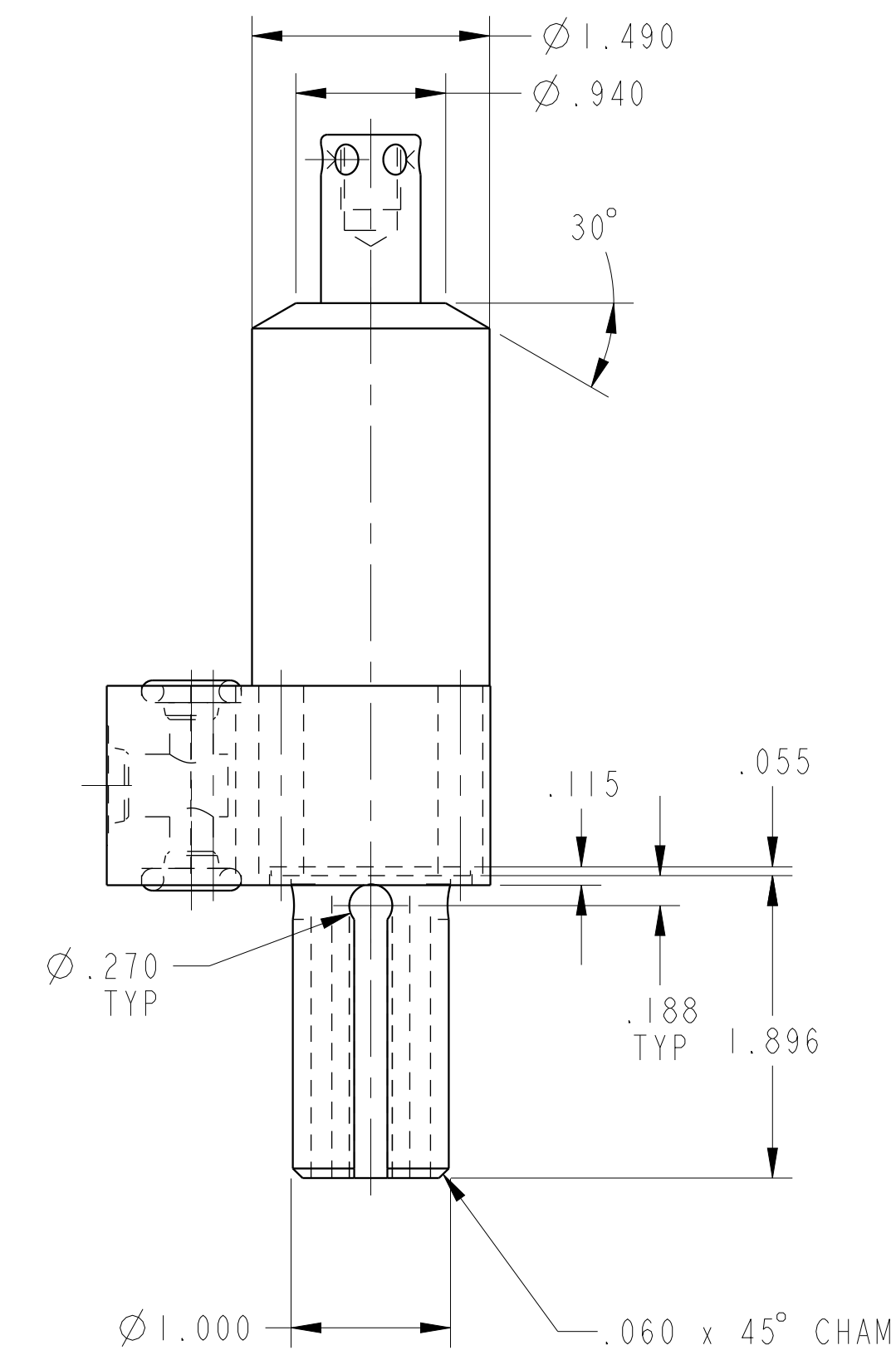
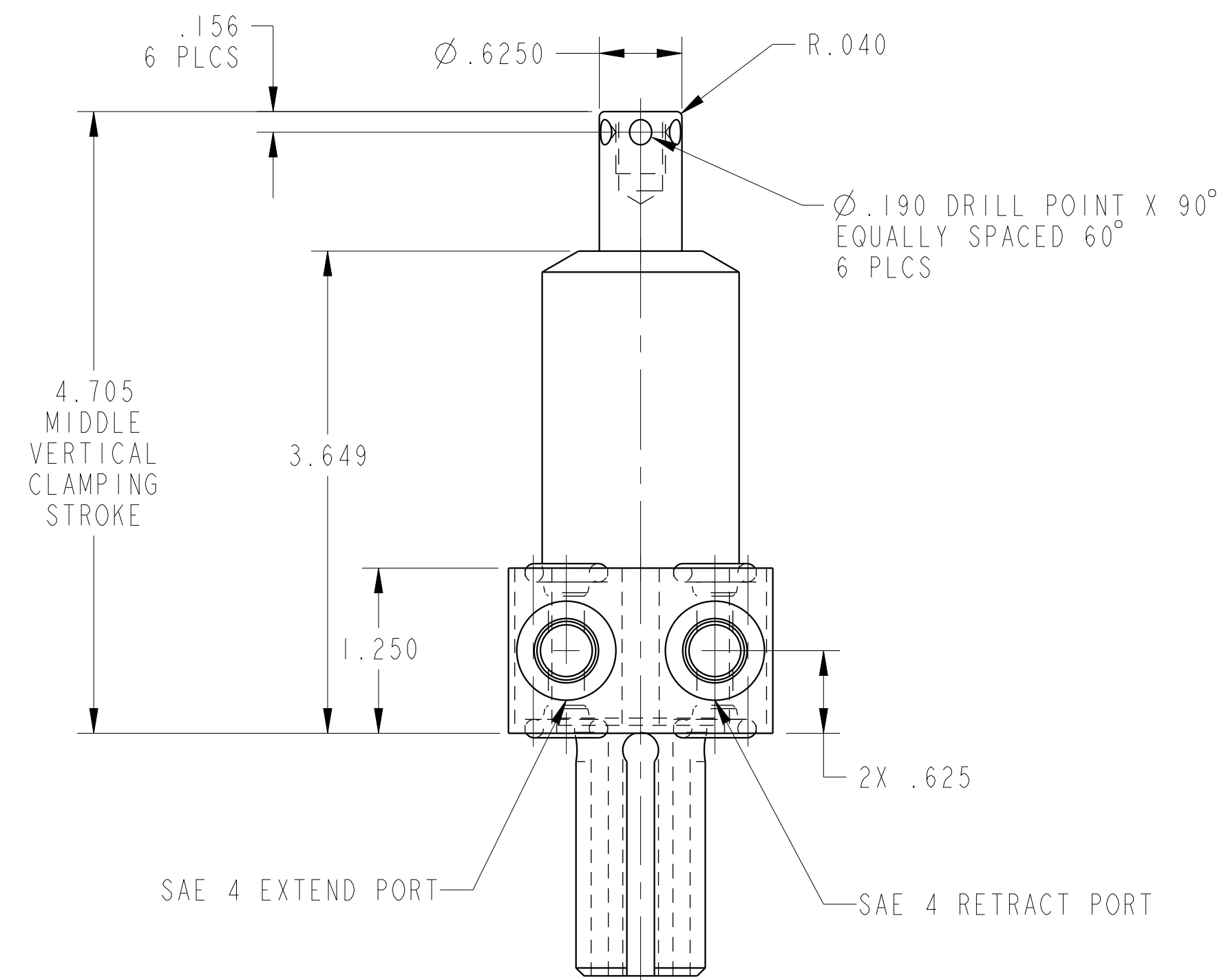
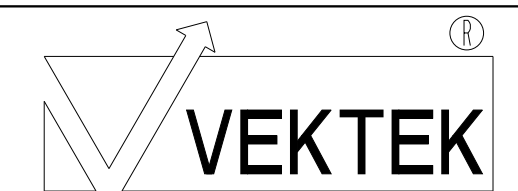


ILC14220901LPS REV E ECN 4186



CAD CONTROL
DRAWING



VEKTEK, INC.
1334 E. SIXTH AVE. P.O. BOX 625
EMPORIA, KS. 66801 U.S.A.

| | | | | | | | |
|---------|------------------------|--|------------|----------|---|----------------|------------------------------|
| E | 4186 | RELEASE | JDW | 07/04/20 | 14220901LPS | E | SC, BF, DA, HS, LH, PS, 1100 |
| REV | IN ACCORDANCE WITH ECN | EFFECTIVE DATE | REVISED BY | DATE | REFERENCE MODEL | REF REV | *** |
| DRW BY: | K. ROEMER | DRAWING STATUS: Released | | | TOLERANCES DO NOT APPLY DIMENSIONS ARE NOMINAL | | SIZE |
| DATE: | 07-25-05 | PRODUCTION APPROVED FOR RELEASED STATUS ONLY | | | D | ILC14220901LPS | REV E |