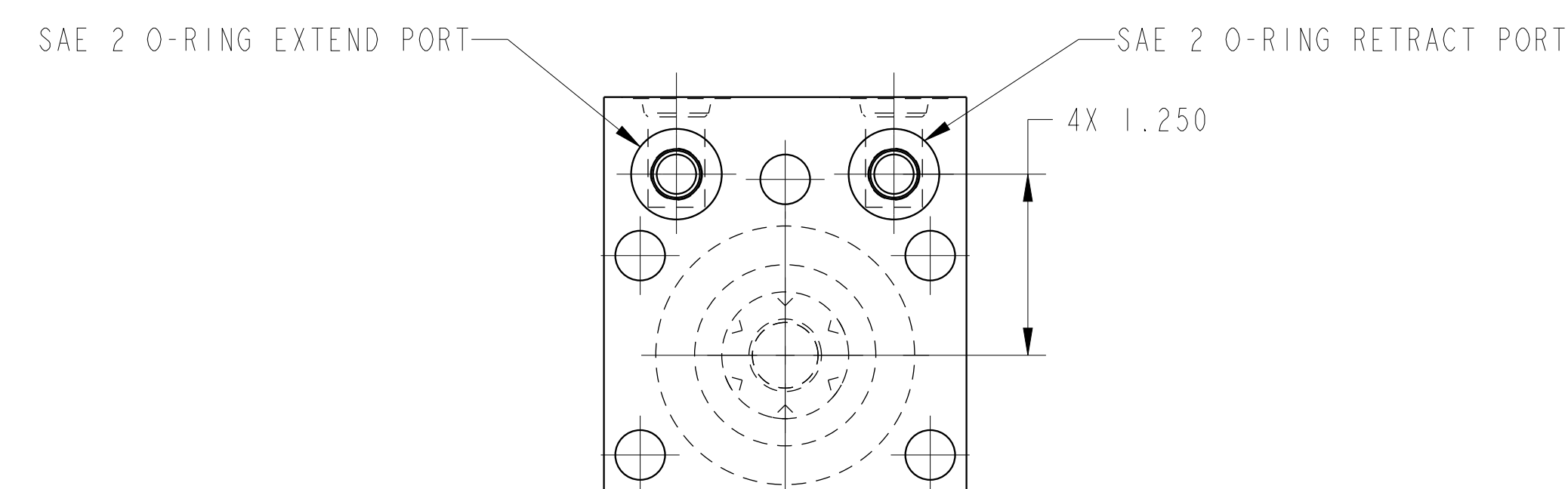
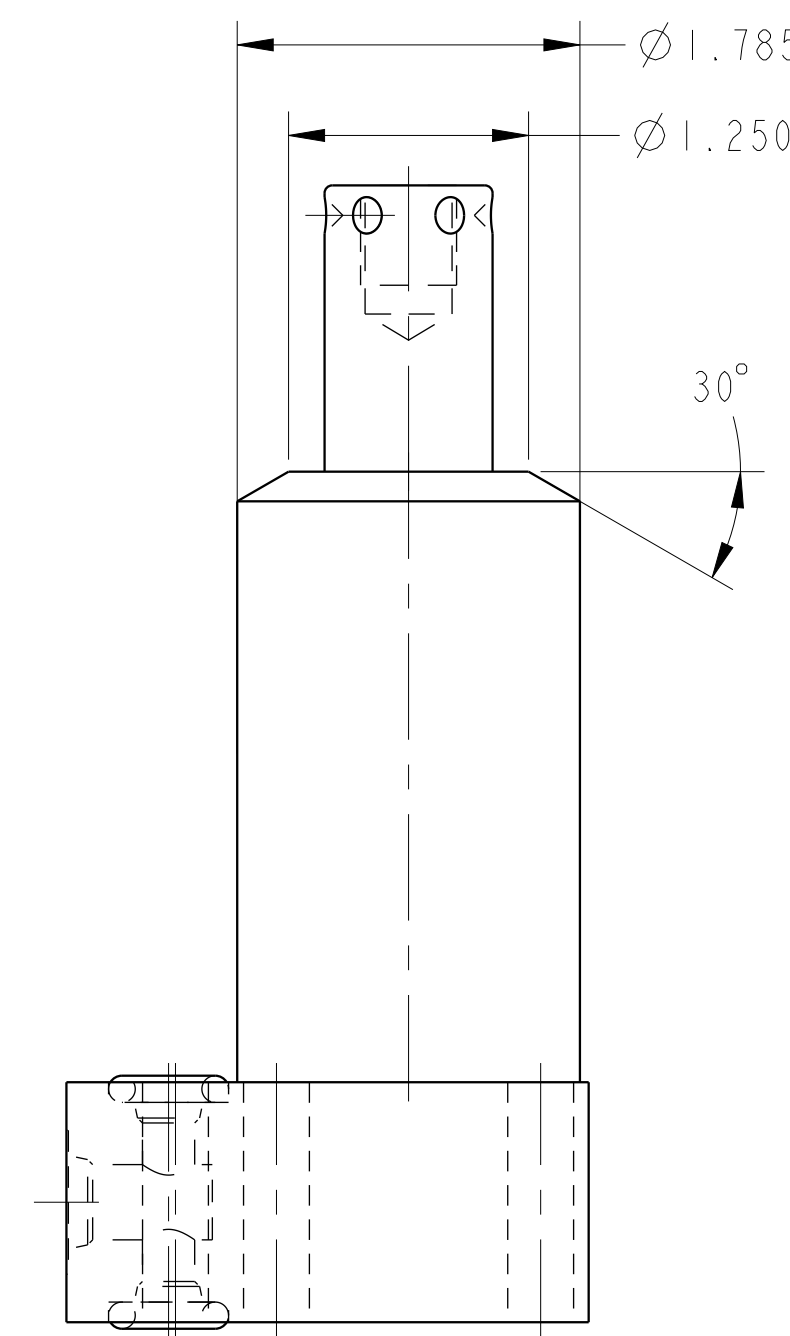
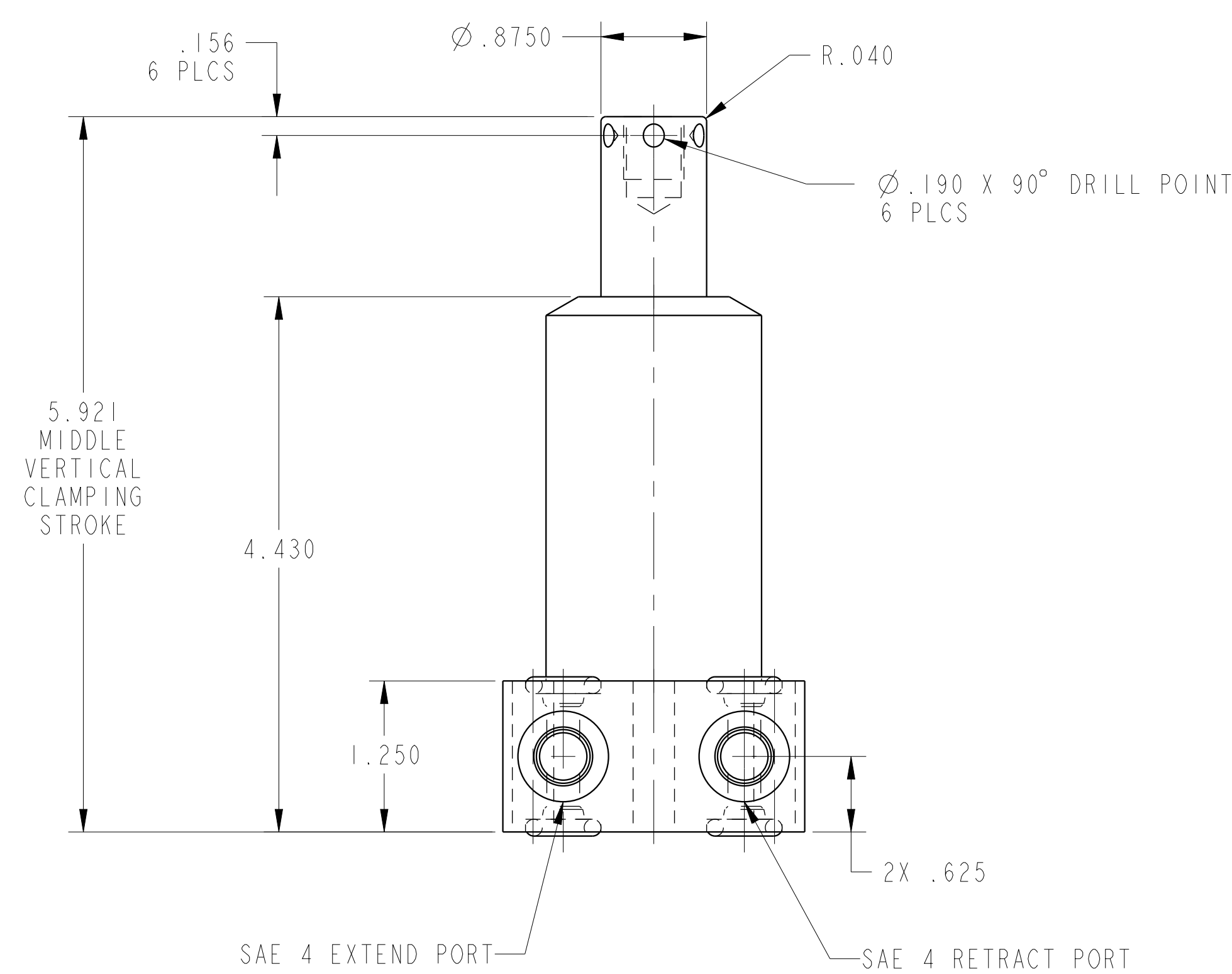
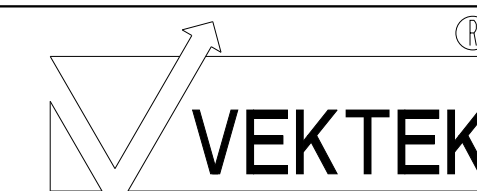


ILC14221301L REV E ECN 3505  
SCALE 1.000



CAD CONTROL  
DRAWING



VEKTEK, INC.  
1334 E. SIXTH AVE. P.O. BOX 625  
EMPORIA, KS. 66801 U.S.A.

E	3505	RELEASE	ATHOMSEN	15-JUN-2018
REV	IN ACCORDANCE WITH ECN	EFFECTIVE DATE	REVISED BY	DATE
DRW BY:	DRAWING STATUS: <b>Released</b>			
DATE:	PRODUCTION APPROVED FOR RELEASED STATUS ONLY			

TOLERANCES DO NOT APPLY DIMENSIONS ARE NOMINAL	

SC, BF, DA, HS, LH, 2600	
SIZE D	REV E
ILC14221301L	