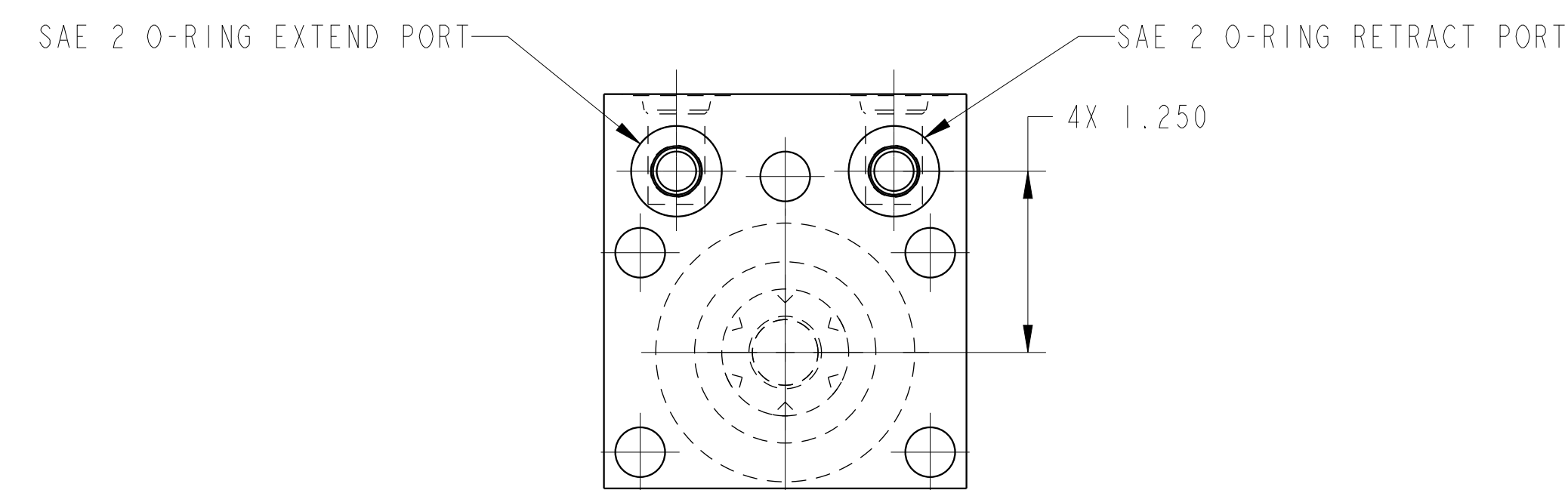
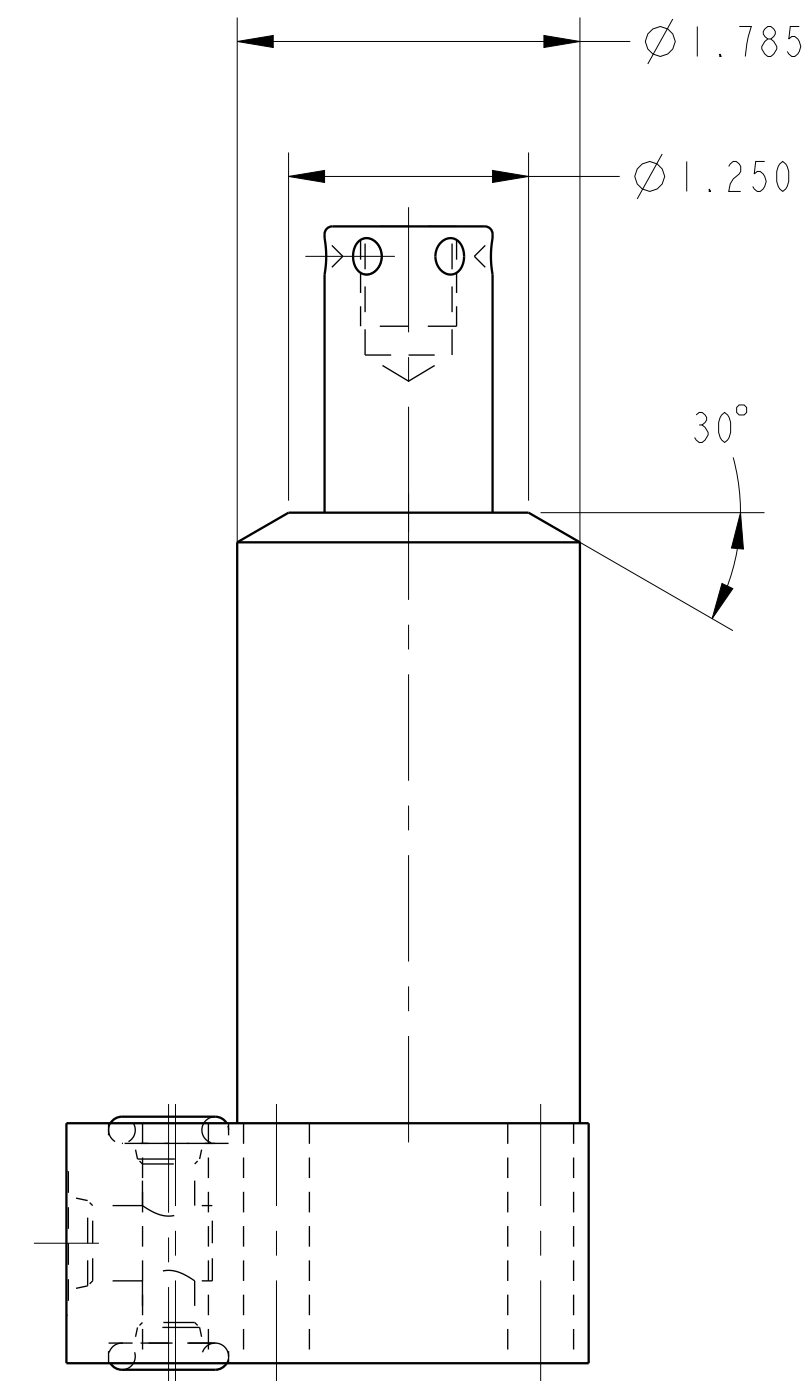
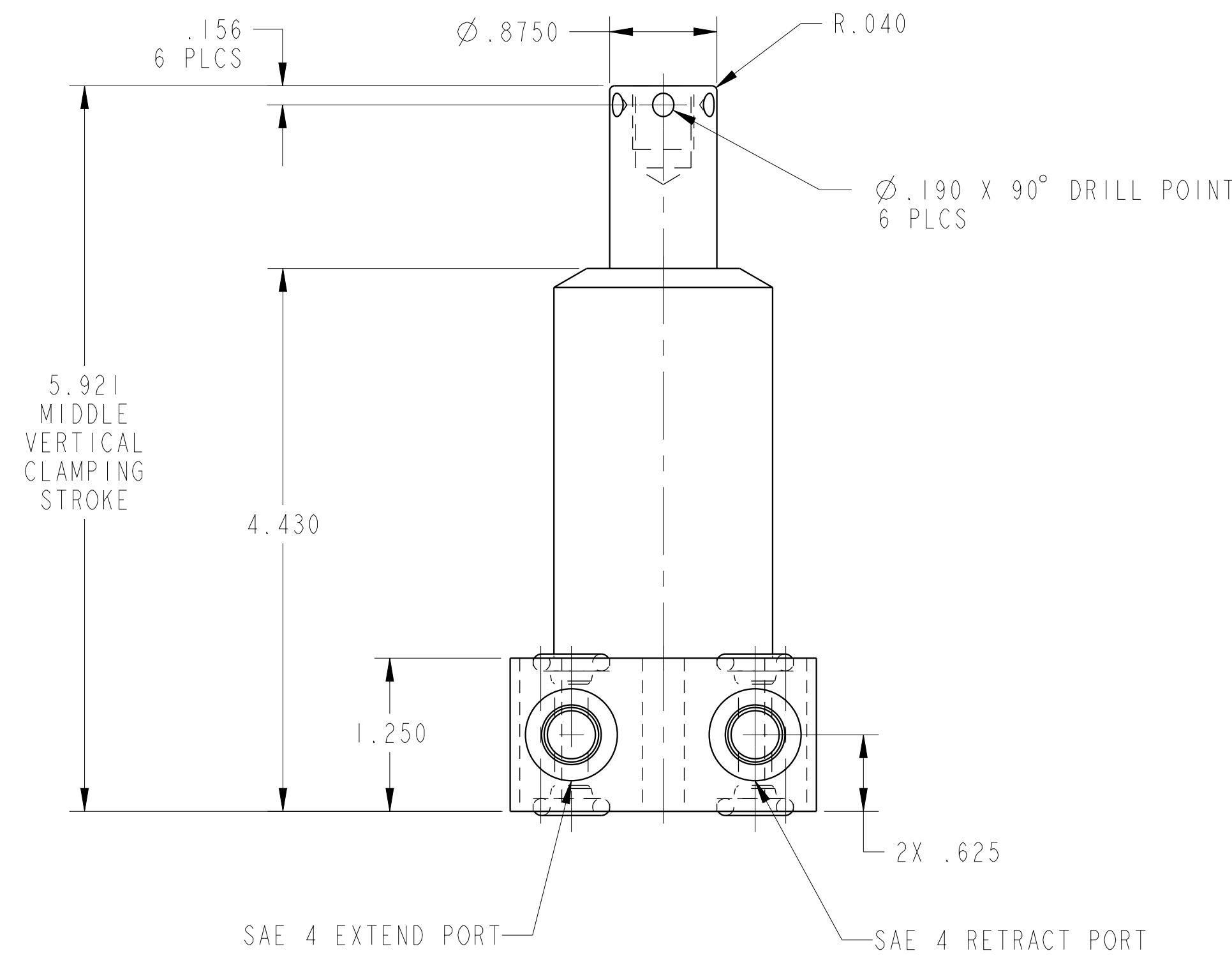
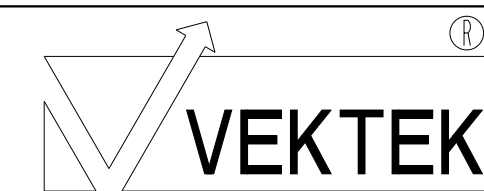


ILC14221301R REV E ECN 3505
SCALE 1.000



CAD CONTROL
DRAWING



VEKTEK, INC.
1334 E. SIXTH AVE. P.O. BOX 625
EMPORIA, KS. 66801 U.S.A.

E	3505	RELEASE	ATHOMSEN	15-JUN-2018
REV	IN ACCORDANCE WITH ECN	EFFECTIVE DATE	REVISED BY	DATE
DRW BY:	K. ROEMER	DRAWING STATUS: Released		
DATE:	02-09-05	PRODUCTION APPROVED FOR RELEASED STATUS ONLY		

14221301R	C
REFERENCE MODEL	REF REV
TOLERANCES DO NOT APPLY DIMENSIONS ARE NOMINAL	

SC, BF, DA, HS, RH, 2600	REV E
SIZE D	ILC14221301R