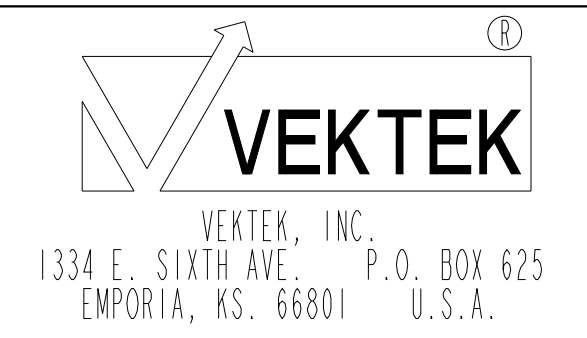


ILC14221301RPR REV E ECN 3505

5/16-24 UNF -2A x 3.625 MFT

CAD CONTROL DRAWING



E	3505	RELEASE	ATHOMSEN	15-JUN-2018
REV	IN ACCORDANCE WITH ECN	EFFECTIVE DATE	REVISED BY	DATE
DRW BY:	K. ROEMER	DRAWING STATUS: <b>Released</b>		
DATE:	07-25-05	PRODUCTION APPROVED FOR RELEASED STATUS ONLY		

14221301RPR	B
REFERENCE MODEL	REF REV
TOLERANCES DO NOT APPLY DIMENSIONS ARE NOMINAL	

SC, BF, DA, HS, RH, PR, 2600	REV E
SIZE D	ILC14221301RPR
FORM FEG036, Rev. B	