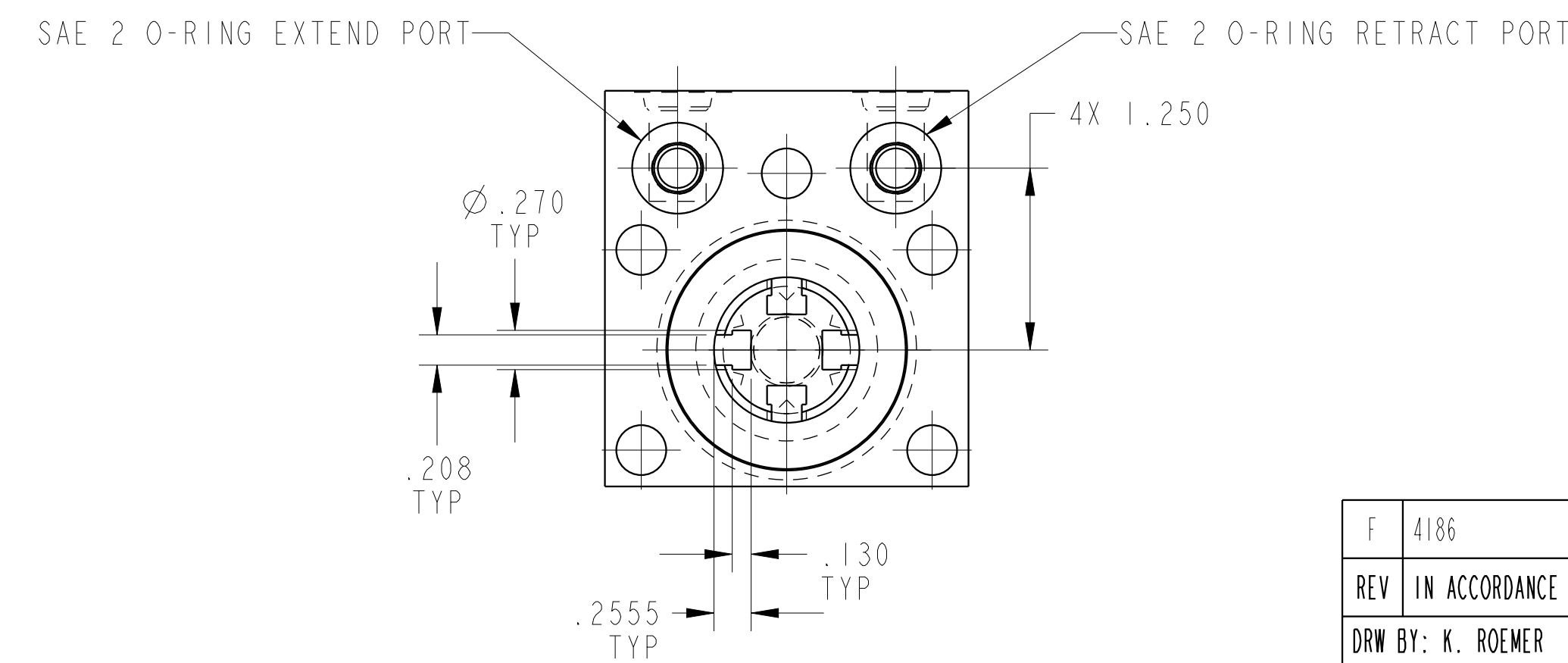
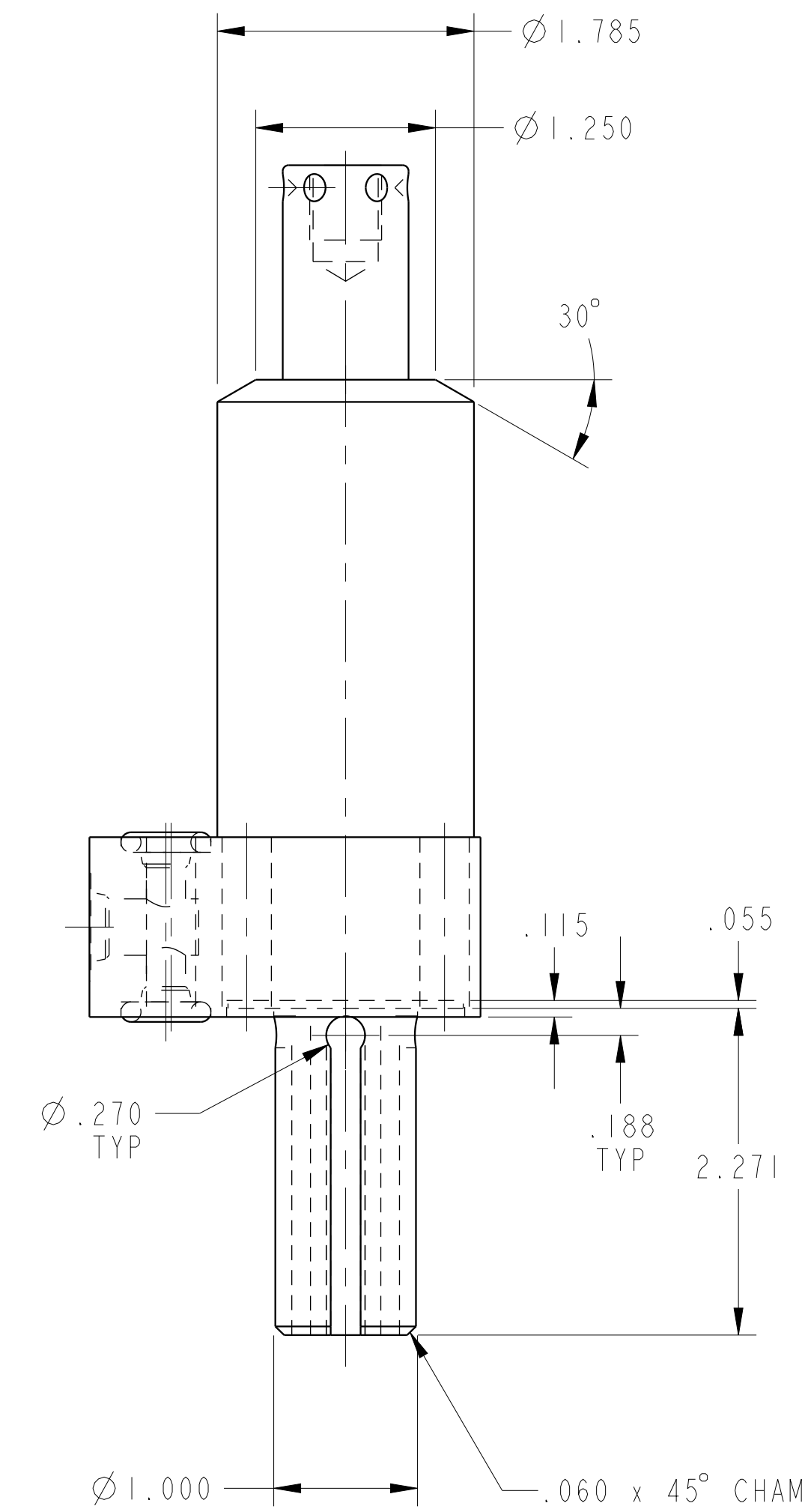
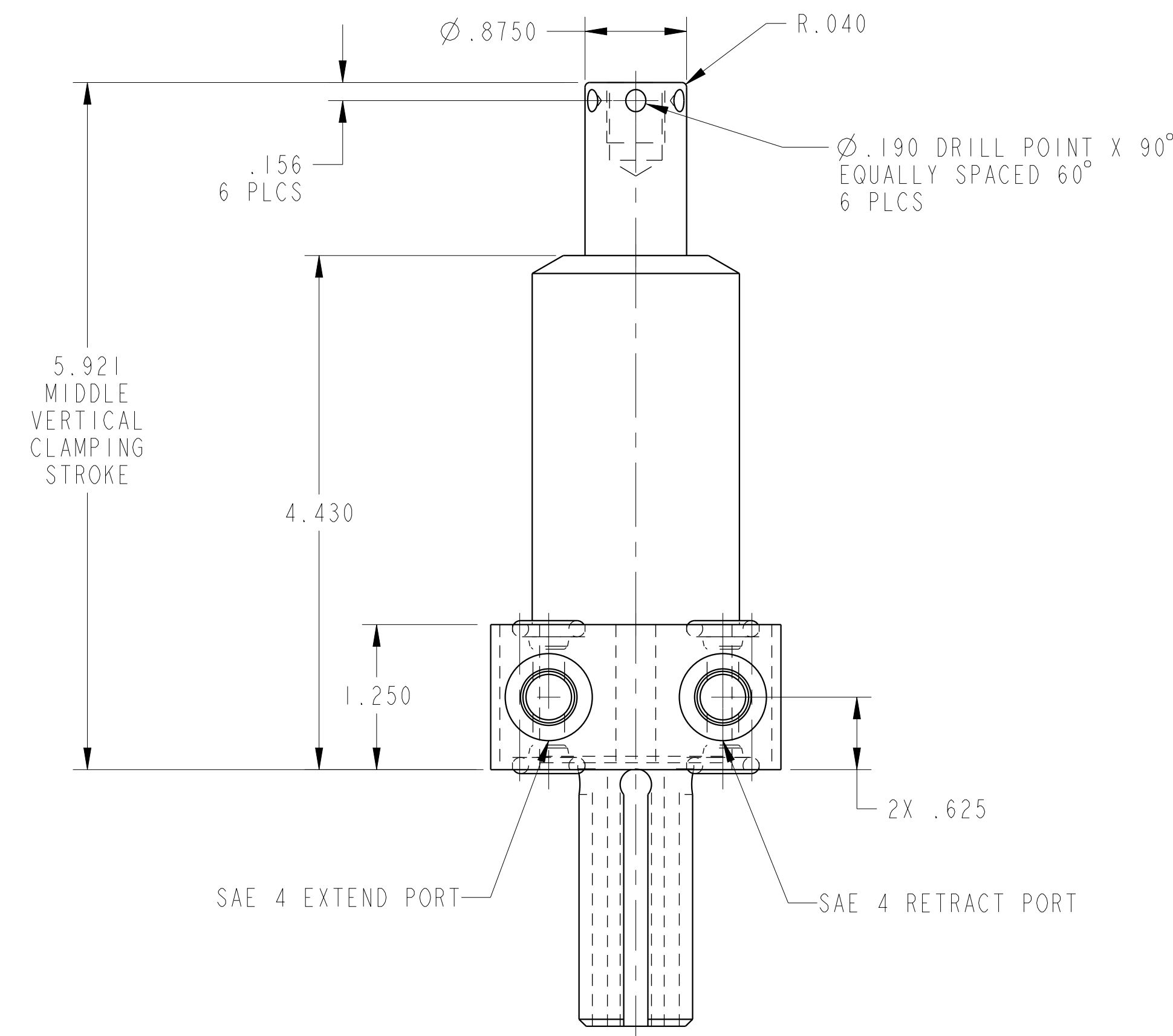
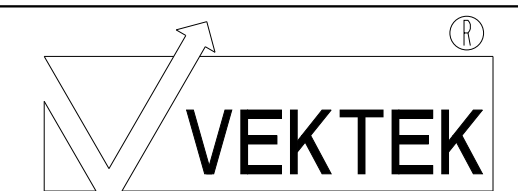


ILC14221301RPS REV F ECN 4186



CAD CONTROL
DRAWING



VEKTEK, INC.
1334 E. SIXTH AVE. P.O. BOX 625
EMPORIA, KS. 66801 U.S.A.

F	4186	RELEASE	JDW	07/04/20	14221301RPS	E	SC, BF, DA, HS, RH, PS, 2600
REV	IN ACCORDANCE WITH ECN	EFFECTIVE DATE	REVISED BY	DATE	REFERENCE MODEL	REF REV	
DRW BY:	K. ROEMER	DRAWING STATUS: Released			TOLERANCES DO NOT APPLY DIMENSIONS ARE NOMINAL		SIZE D
DATE:	07-25-05	PRODUCTION APPROVED FOR RELEASED STATUS ONLY			ILC14221301RPS	REV F	