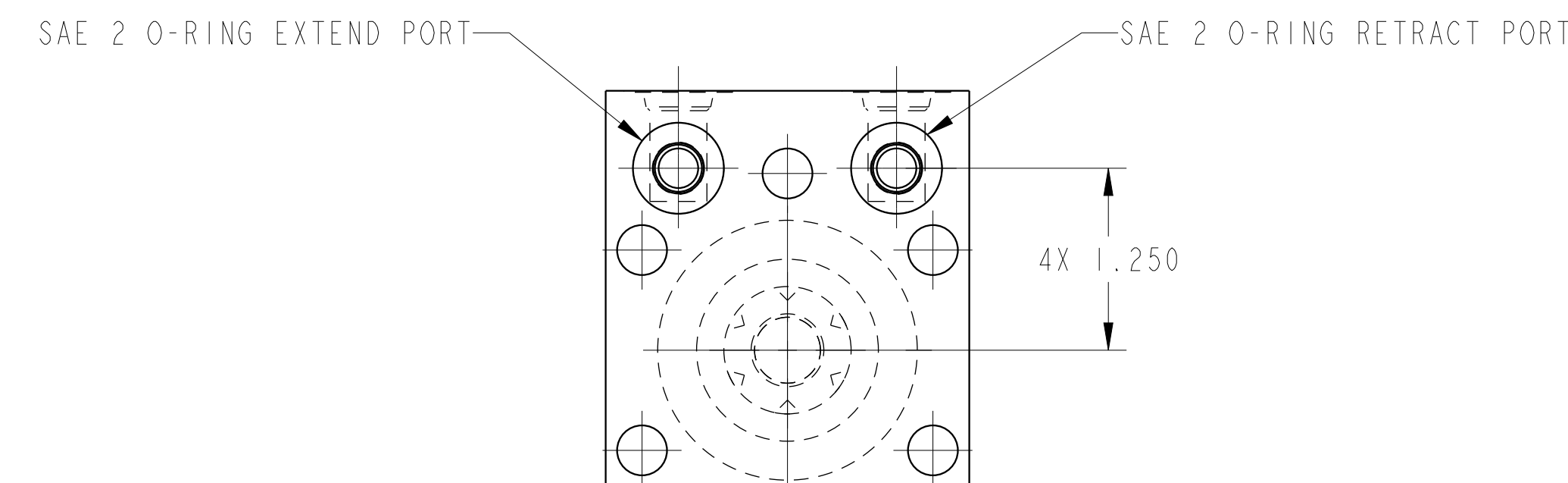
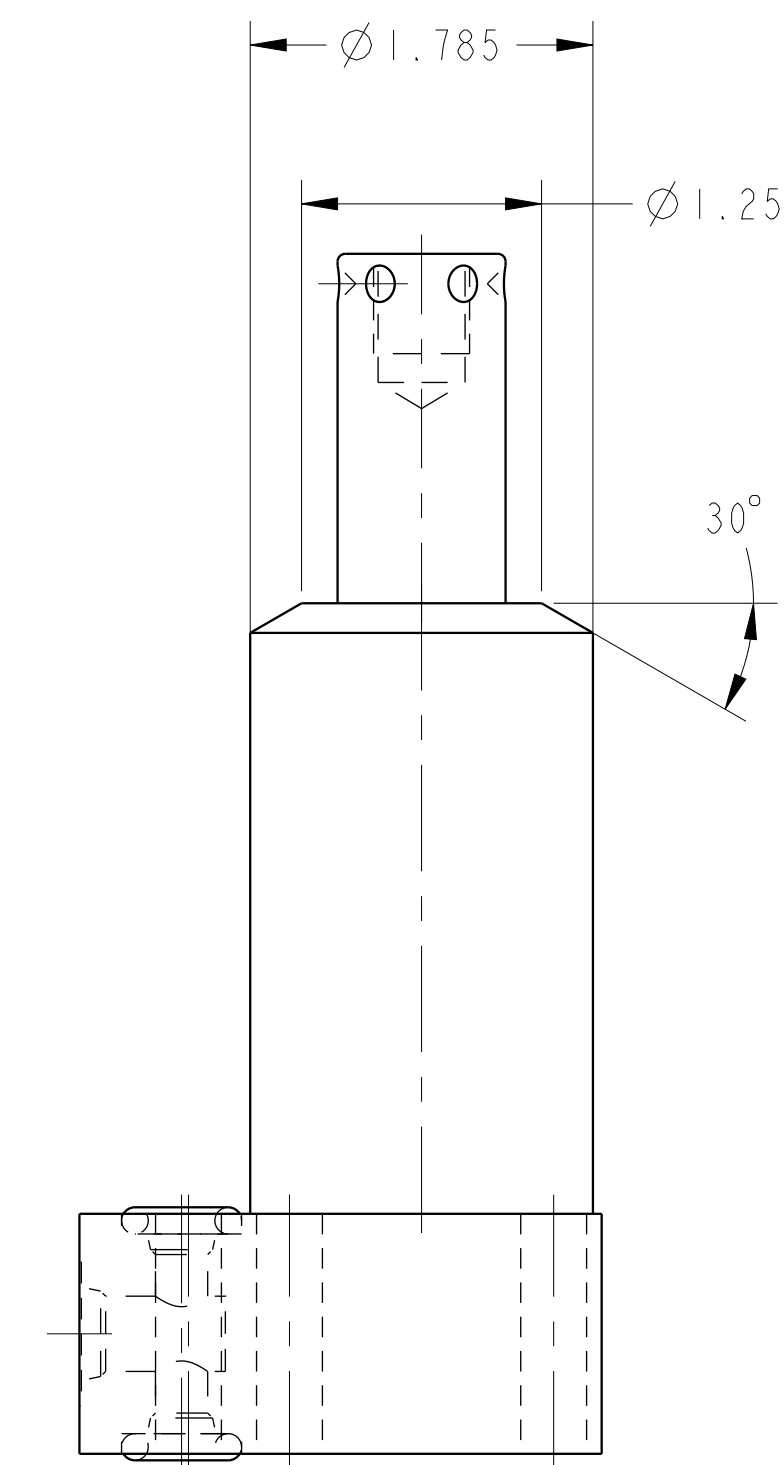
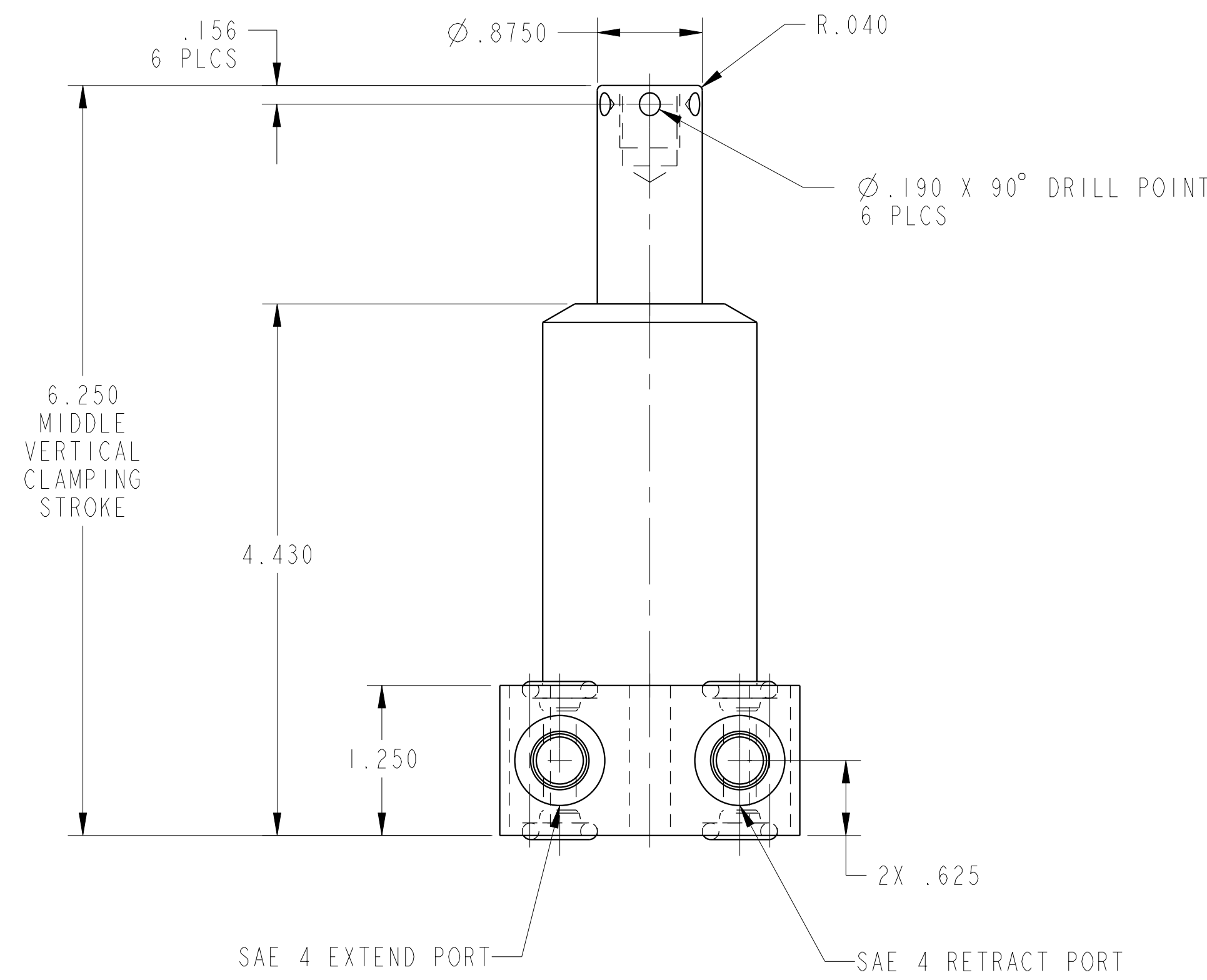
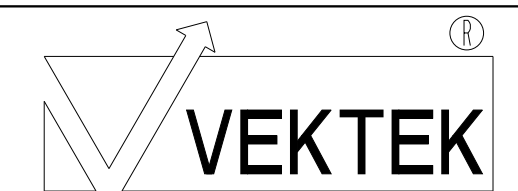


1LC14221301S REV B ECN 3505
SCALE 1.000

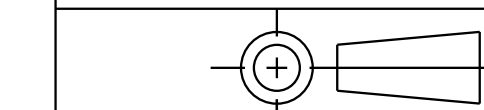


CAD CONTROL
DRAWING



VEKTEK, INC.
1334 E. SIXTH AVE. P.O. BOX 625
EMPORIA, KS. 66801 U.S.A.

B	3505	RELEASE	ATHOMSEN	15-JUN-2018
REV	IN ACCORDANCE WITH ECN	EFFECTIVE DATE	REVISED BY	DATE
DRW BY:	JDW	DRAWING STATUS: Released		
DATE:	01/30/18	PRODUCTION APPROVED FOR RELEASED STATUS ONLY		



14221301S
A

TOLERANCES DO NOT APPLY
DIMENSIONS ARE NOMINAL

SIZE
D

1LC14221301S REV B