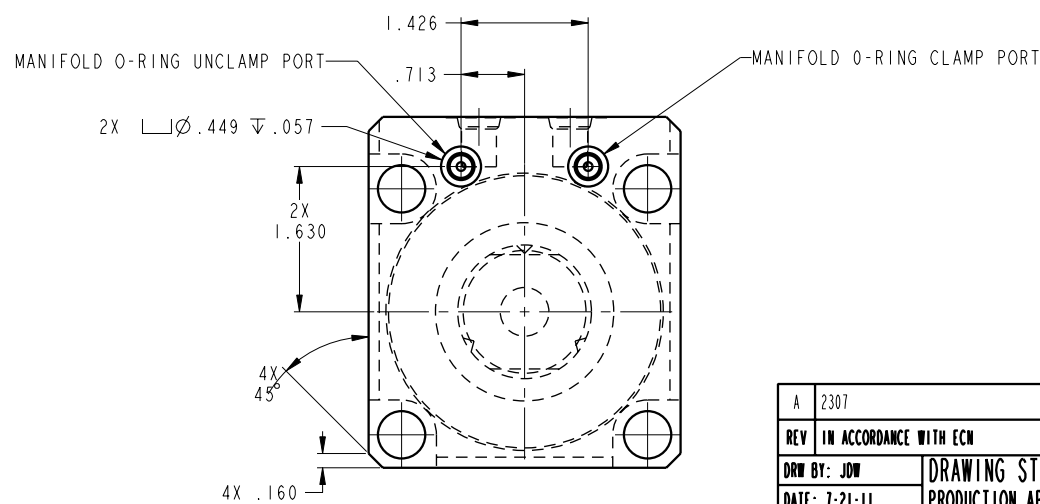
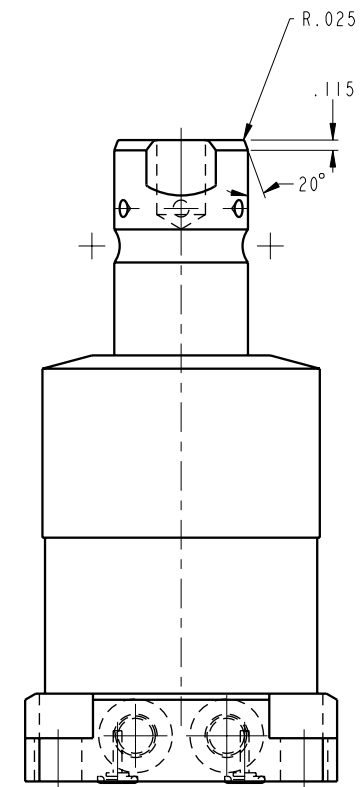
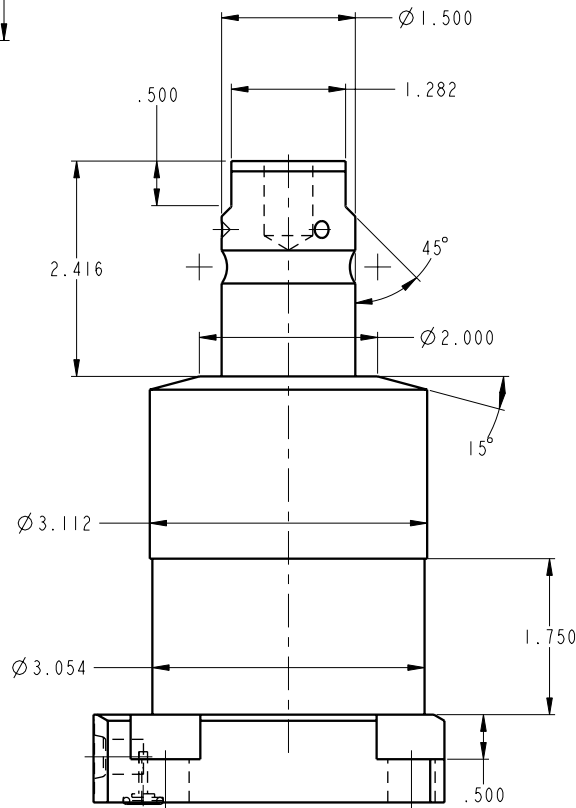
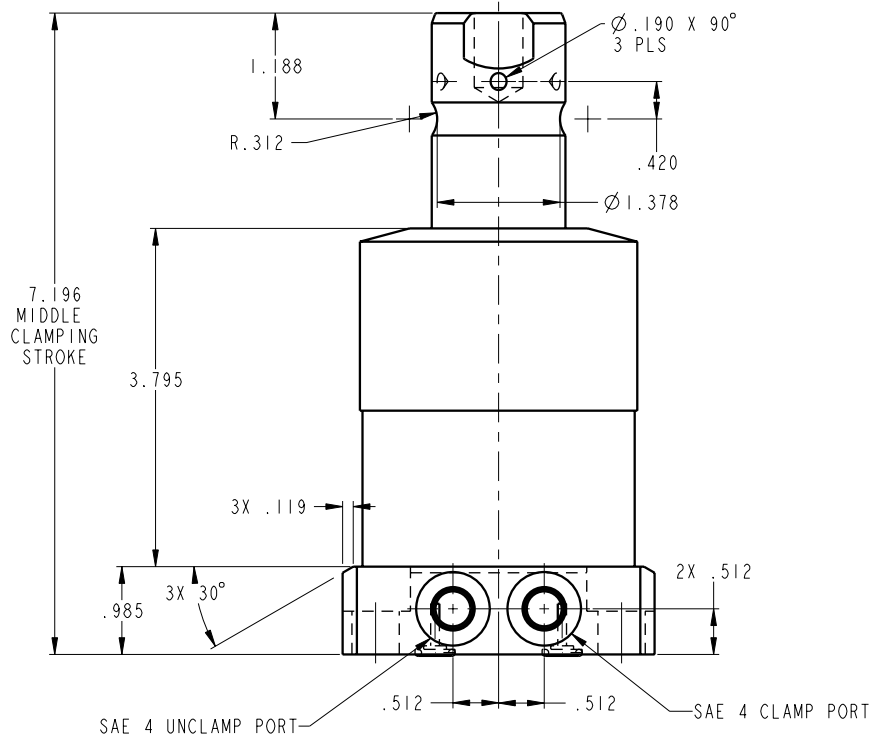
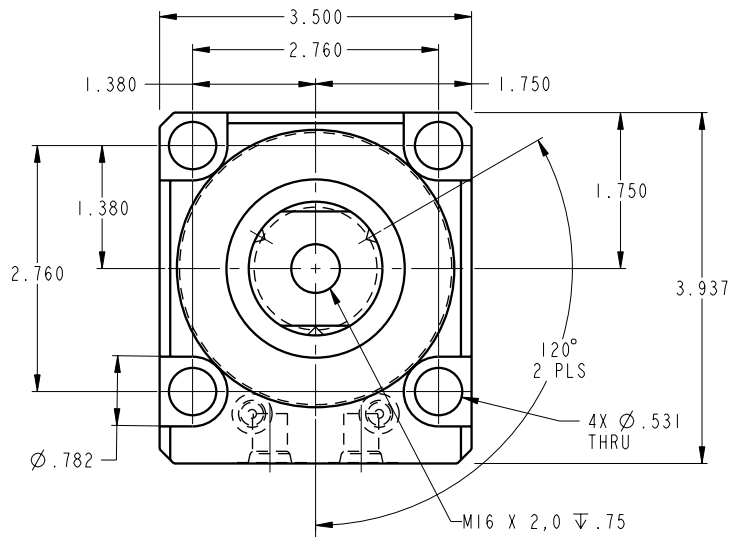


ILC14222100 REV A ECN 2307



CAD CONTROL DRAWING



VEKTEK, INC.
1334 E. SIXTH AVE. P.O. BOX 625
EMPORIA, KS. 66801 U.S.A.

REV	A	2307	RELEASE	JDW	7-21-11	14222100	A	SC, LP, BF, TC, 7500, DA, RH
REV	IN ACCORDANCE WITH ECN		EFFECTIVE DATE	REVISED BY	DATE	REFERENCE MODEL	REF REV	
DRW BY:	JDW		DRAWING STATUS: Released			TOLERANCES DO NOT APPLY		SIZE
DATE:	7-21-11		PRODUCTION APPROVED FOR RELEASED STATUS ONLY			DIMENSIONS ARE NOMINAL		D ILC14222100 REV A

FORM FEG036, Rev. B