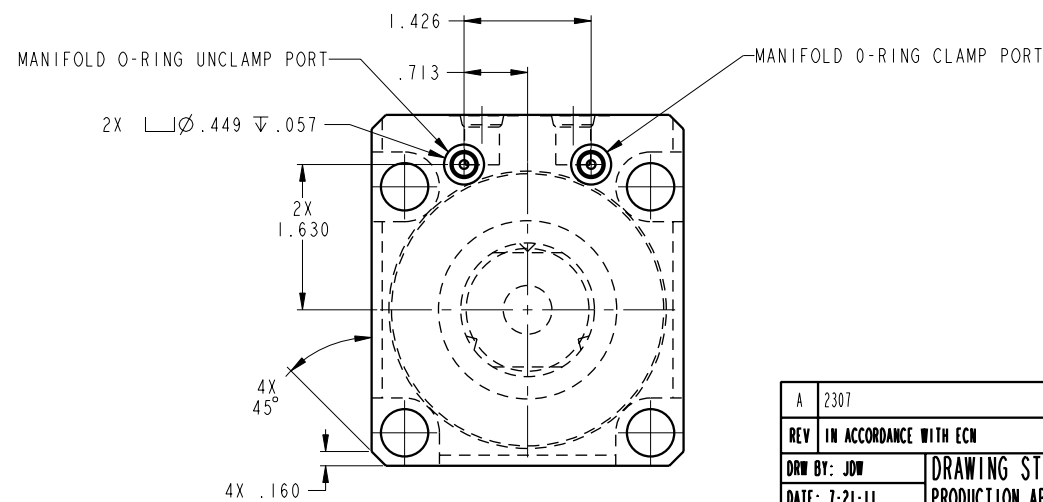
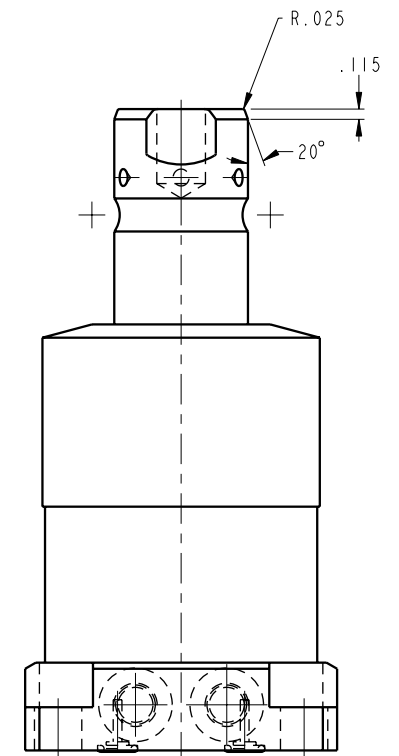
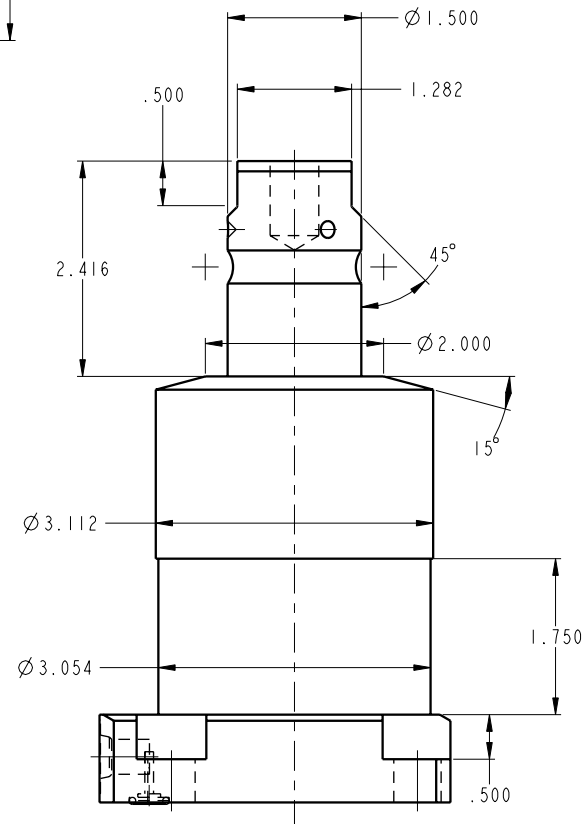
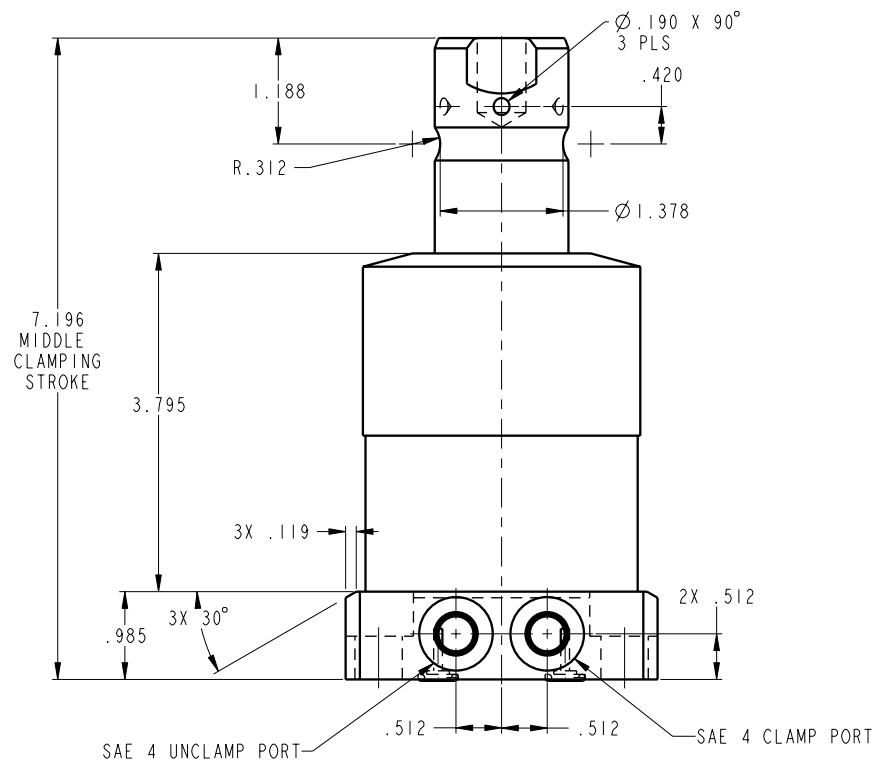
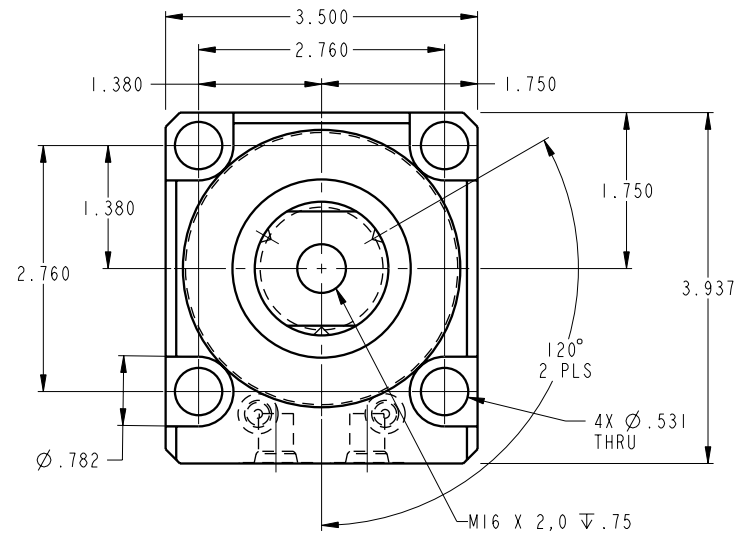


ILC14222101 REV A ECN 2307



CAD CONTROL DRAWING



VEKTEK, INC.  
1334 E. SIXTH AVE. P.O. BOX 625  
EMPORIA, KS. 66801 U.S.A.

|         |                        |      |  |            |         |                         |         |                         |
|---------|------------------------|------|--|------------|---------|-------------------------|---------|-------------------------|
| REV     | A                      | 2307 | RELEASE                                      | JDW        | 7-21-11 | 14222101                | A       | SC,LP, BF,TC,7500,DA,LH |
| REV     | IN ACCORDANCE WITH ECN |      | EFFECTIVE DATE                               | REVISED BY | DATE    | REFERENCE MODEL         | REF REV |                         |
| DRW BY: | JDW                    |      | DRAWING STATUS: <b>Released</b>              |            |         | TOLERANCES DO NOT APPLY |         | SIZE                    |
| DATE:   | 7-21-11                |      | PRODUCTION APPROVED FOR RELEASED STATUS ONLY |            |         | DIMENSIONS ARE NOMINAL  |         | D ILC14222101 REV A     |

FORM FEG036, Rev. B