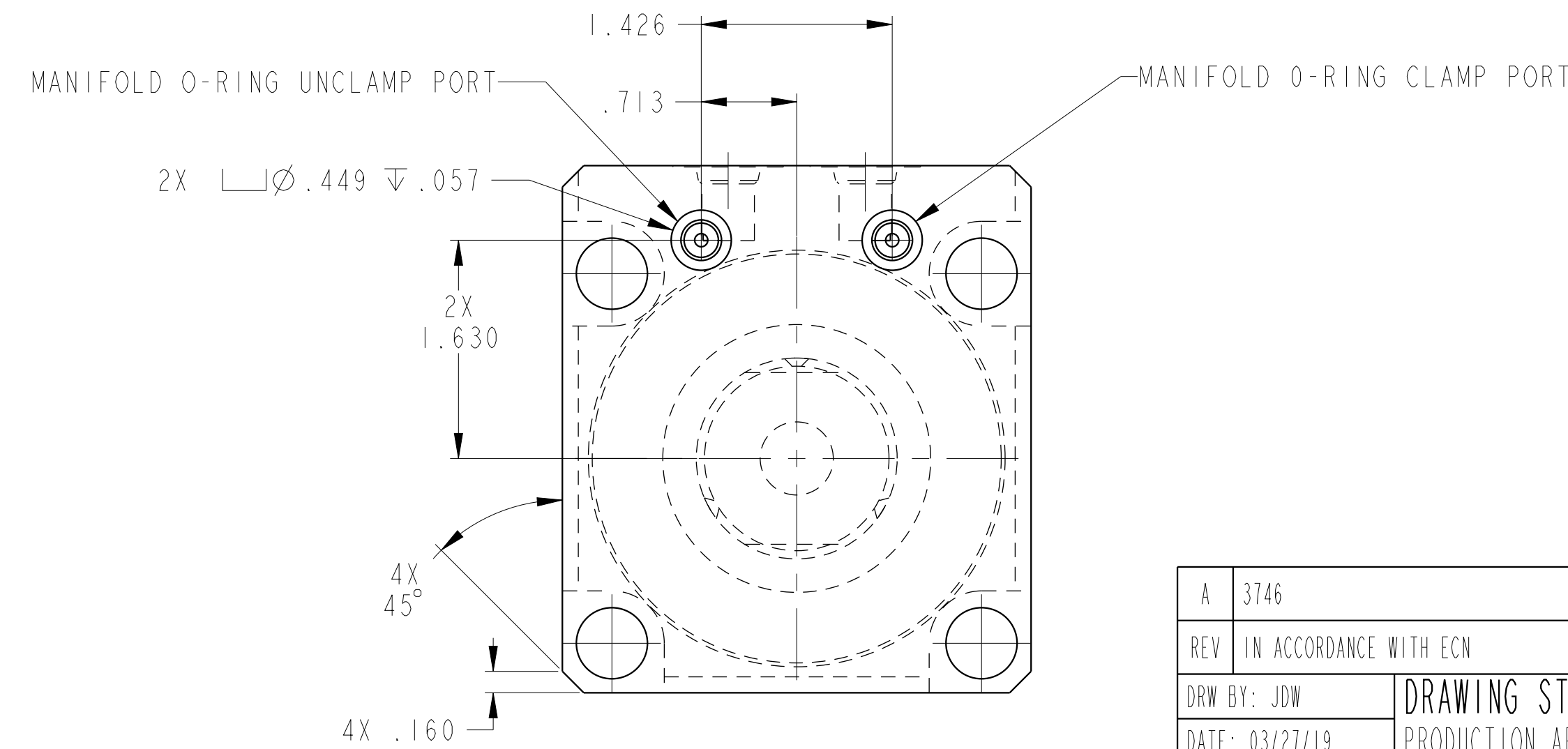
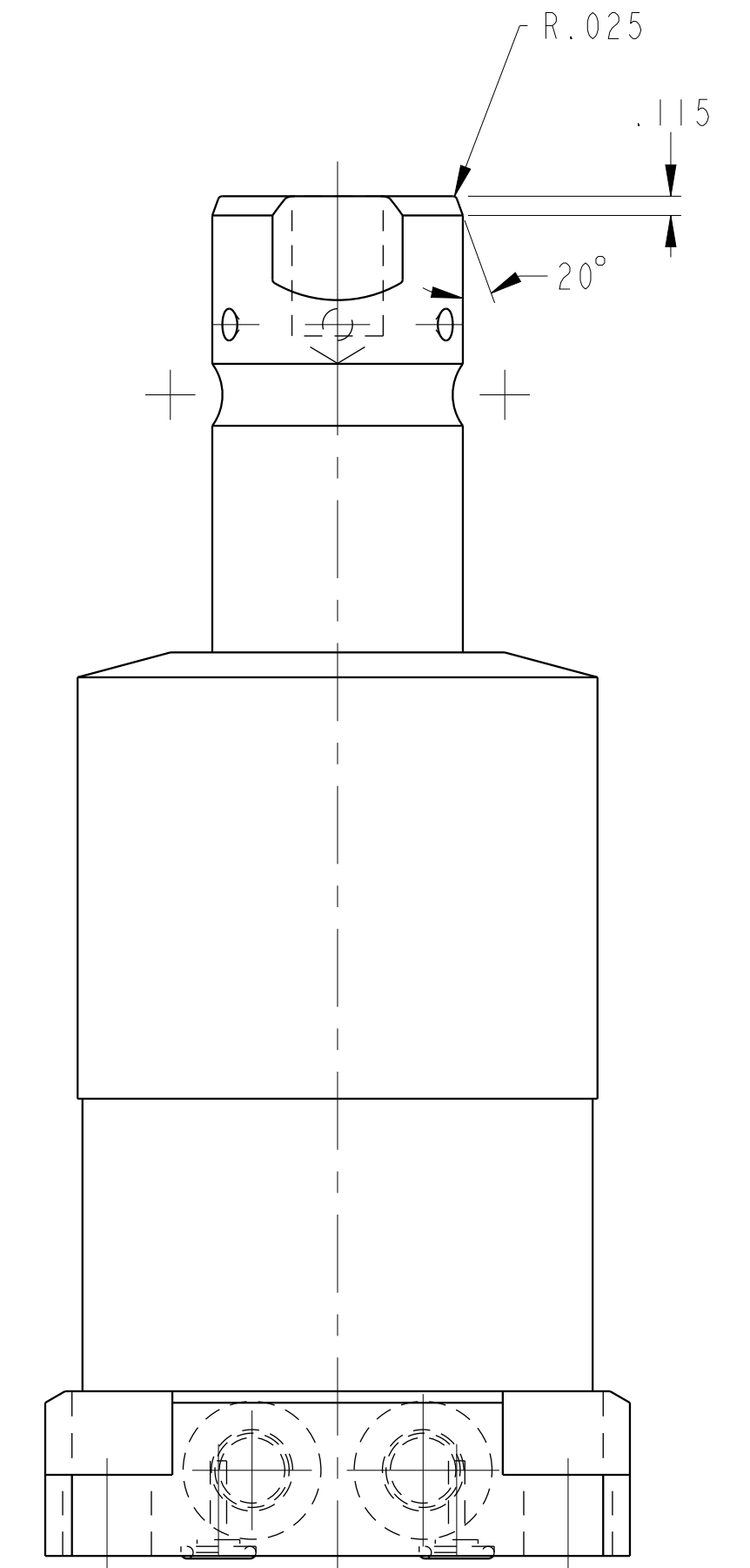
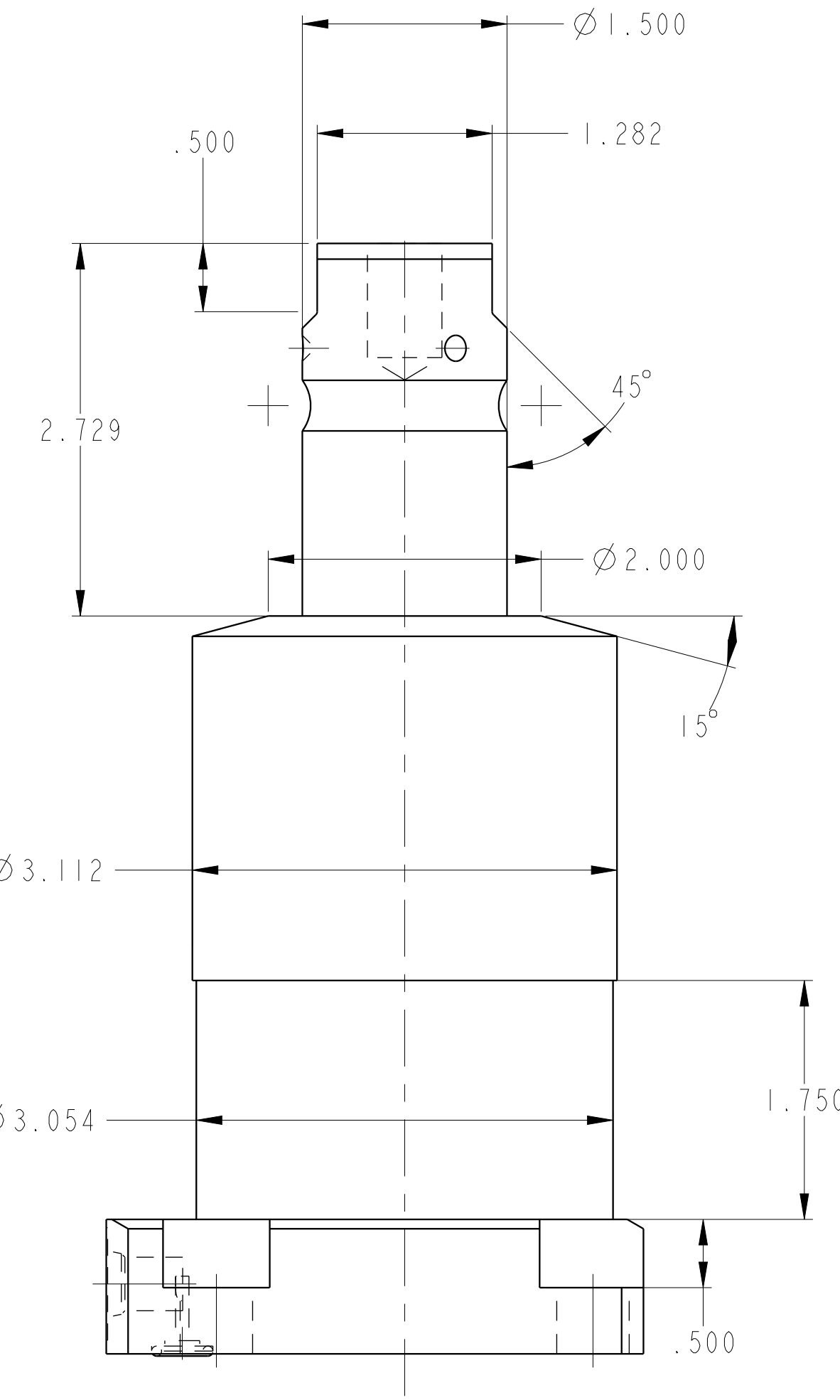
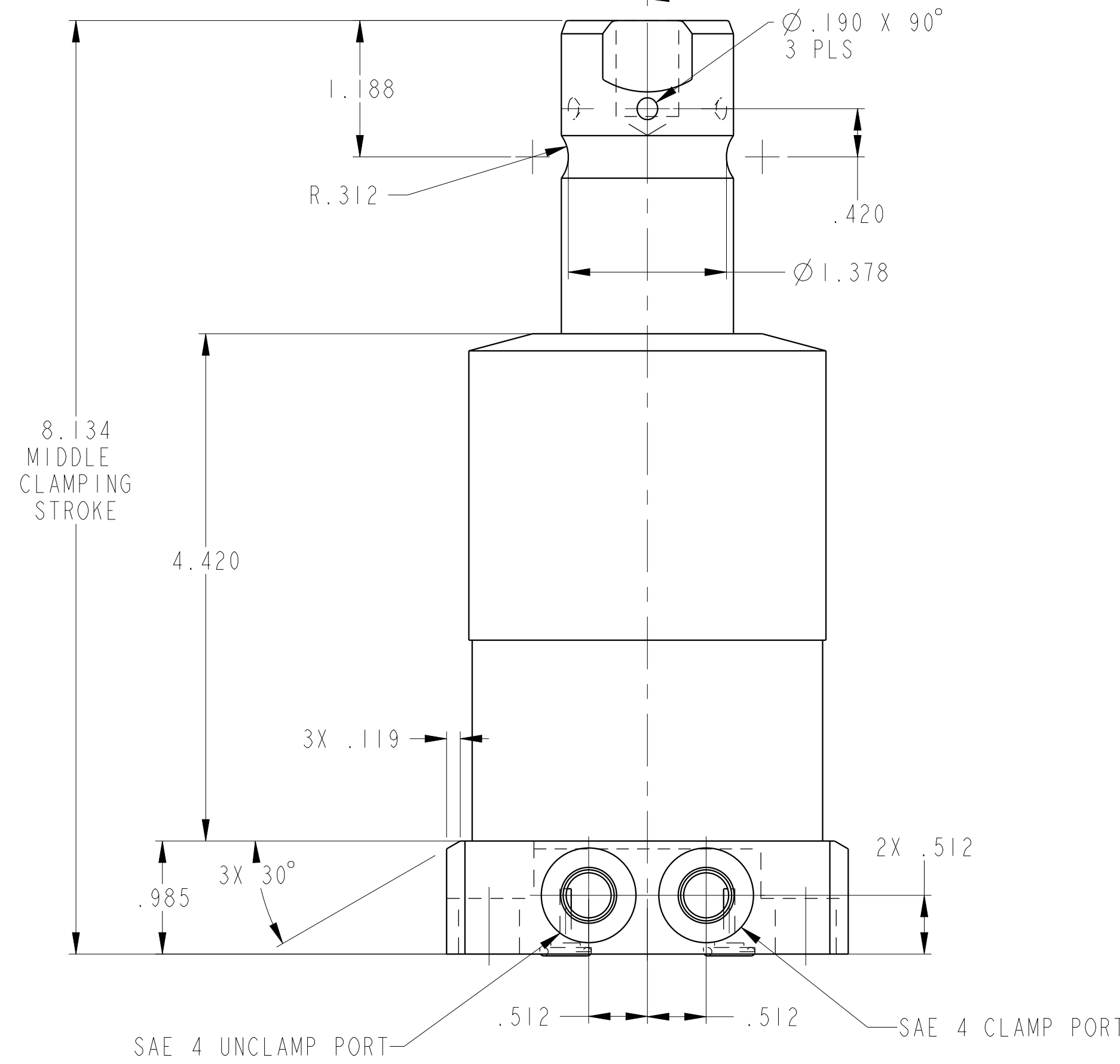
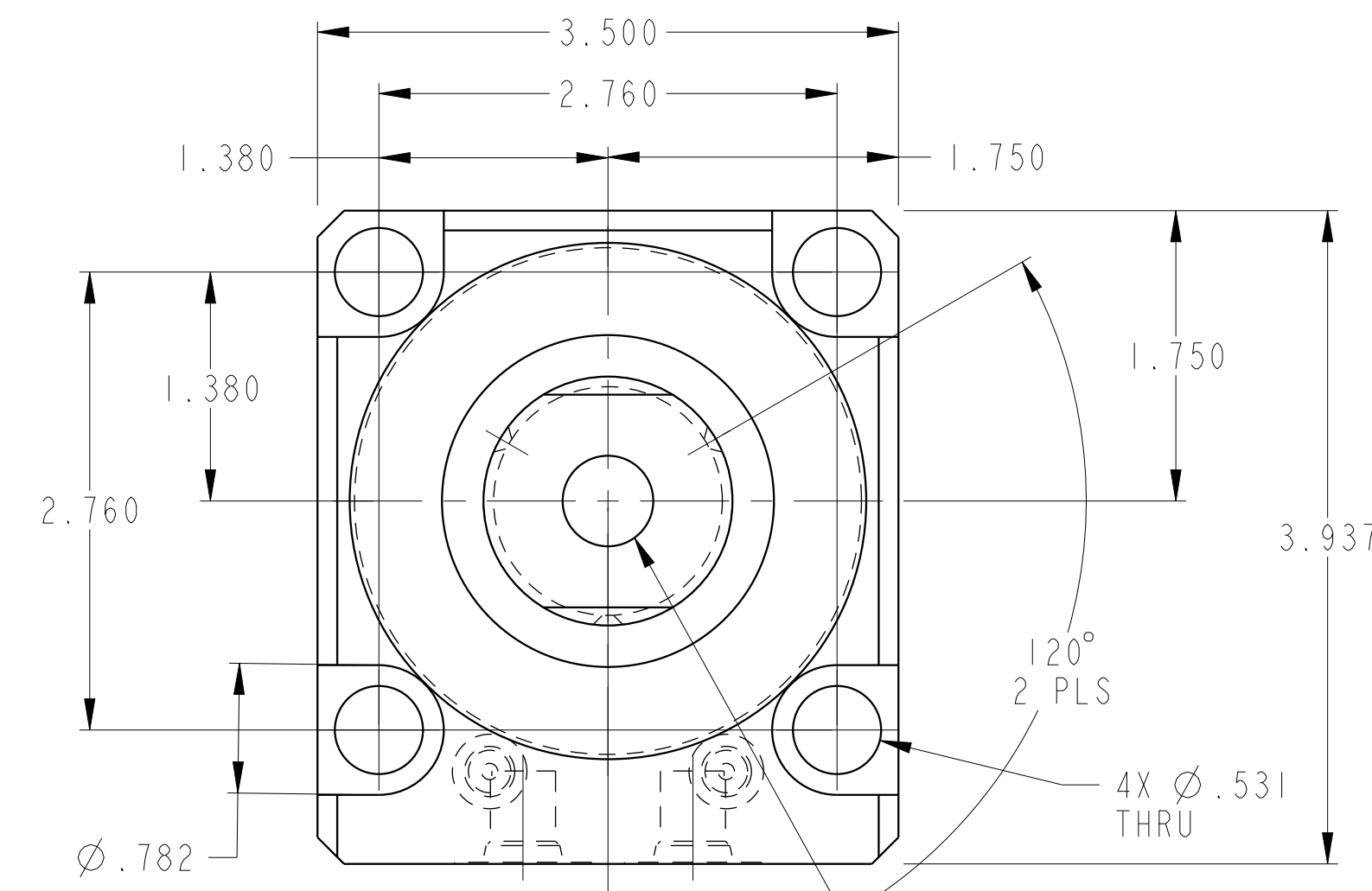
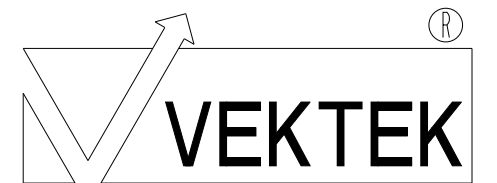


ILC14222104 REV A ECN 3746

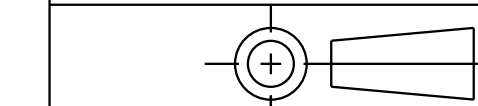


CAD CONTROL DRAWING



VEKTEK, INC.  
1334 E. SIXTH AVE. P.O. BOX 625  
EMPORIA, KS. 66801 U.S.A.

A	3746	RELEASE	JDW	03/27/19
REV	IN ACCORDANCE WITH ECN	EFFECTIVE DATE	REVISED BY	DATE
DRW BY:	JDW	DRAWING STATUS: <b>Released</b>		
DATE:	03/27/19	PRODUCTION APPROVED FOR RELEASED STATUS ONLY		



TOLERANCES DO NOT APPLY  
DIMENSIONS ARE NOMINAL

SIZE D ILC14222104 REV A

FORM FEG036, Rev. B