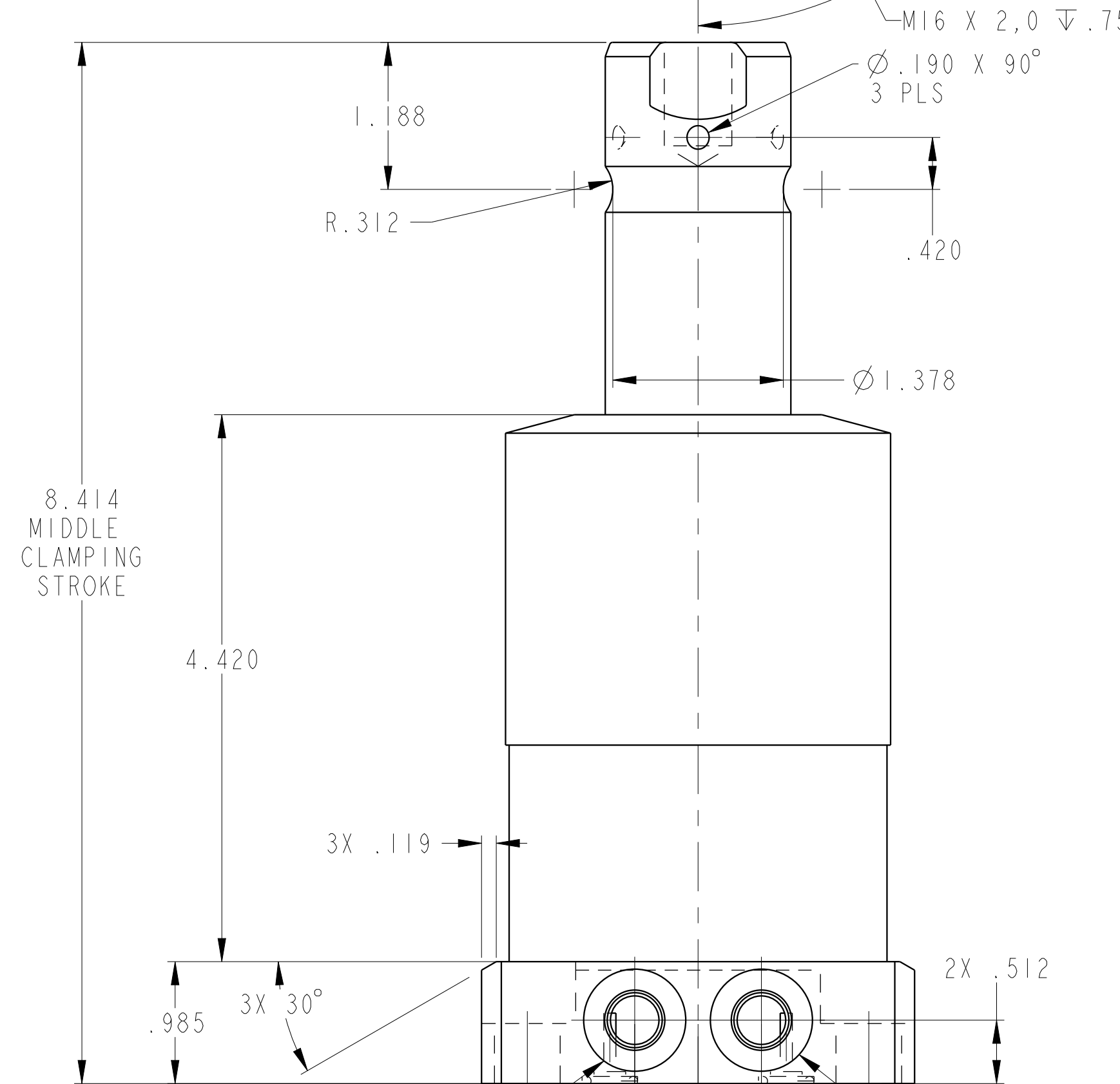
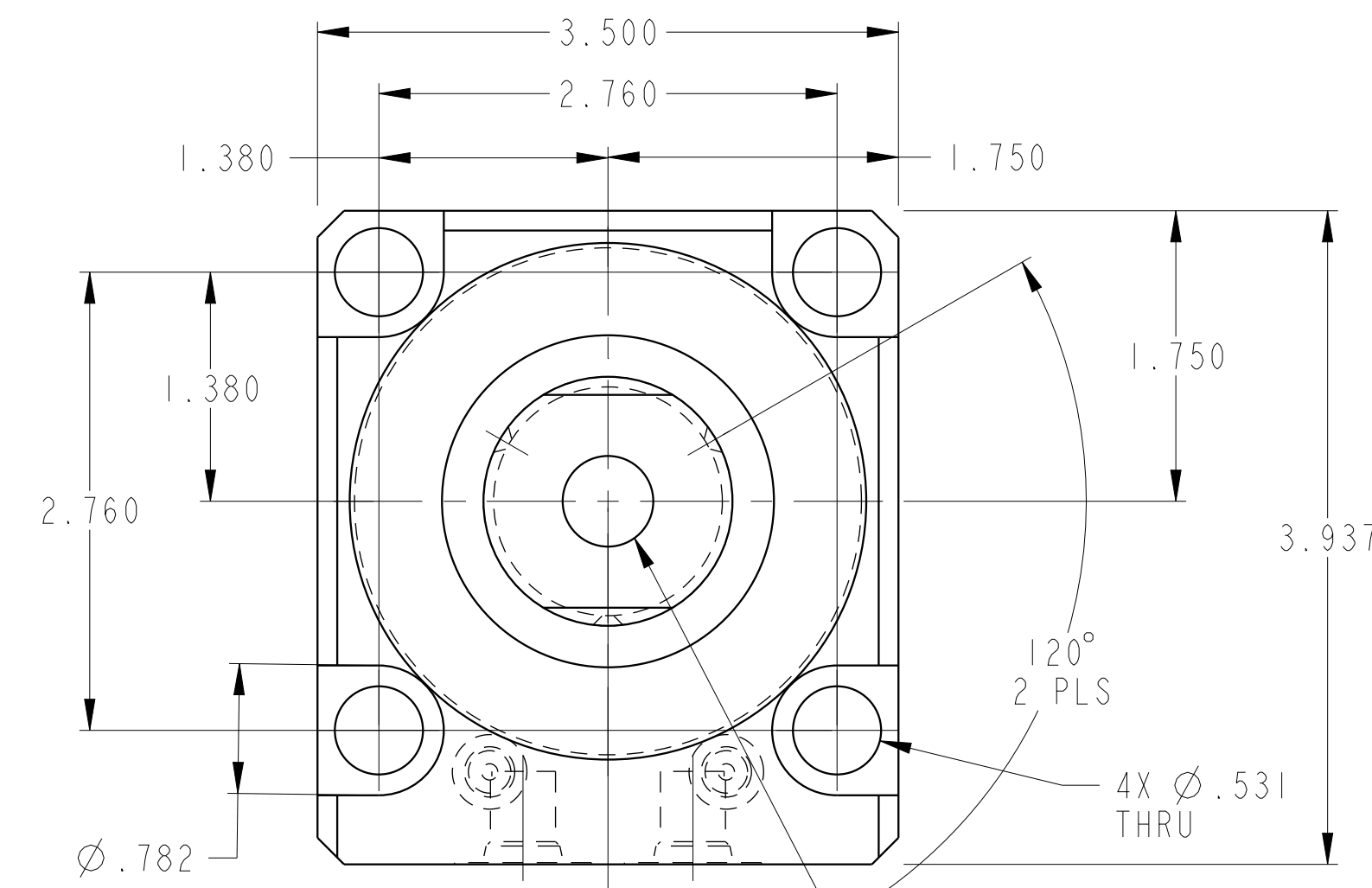
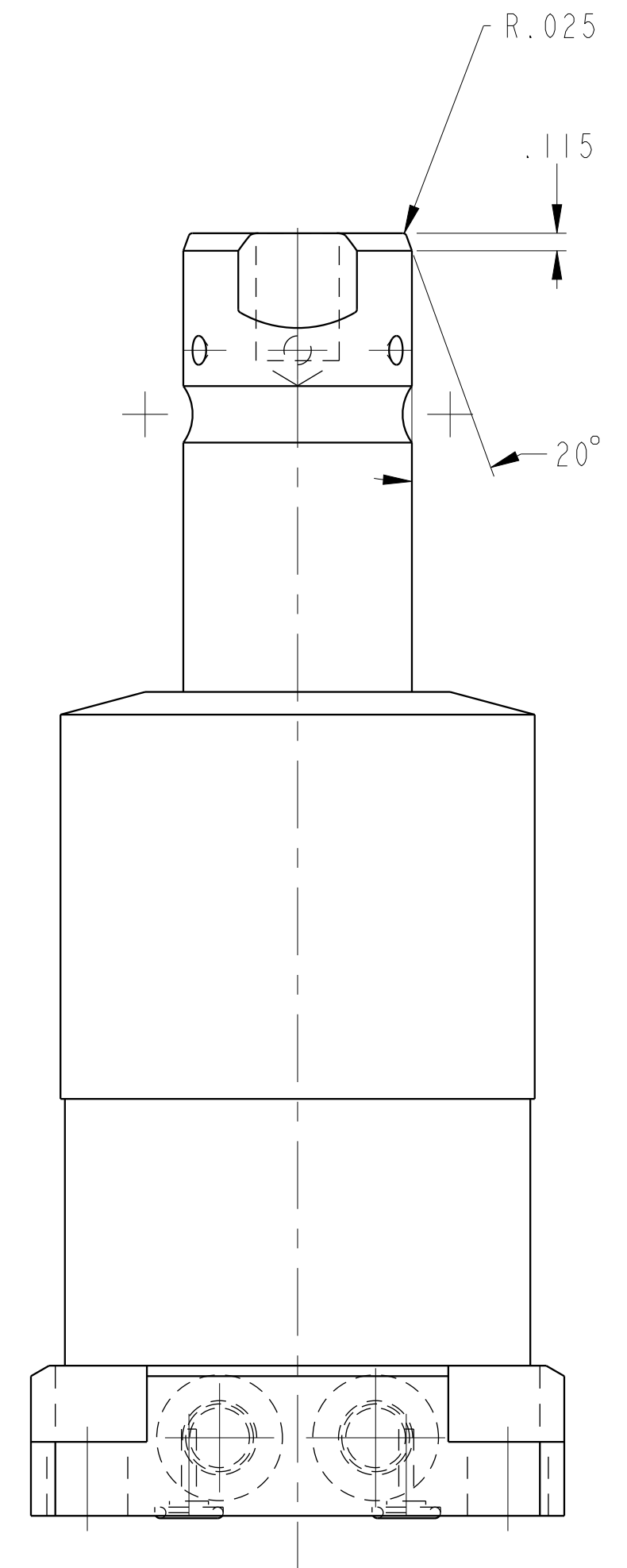
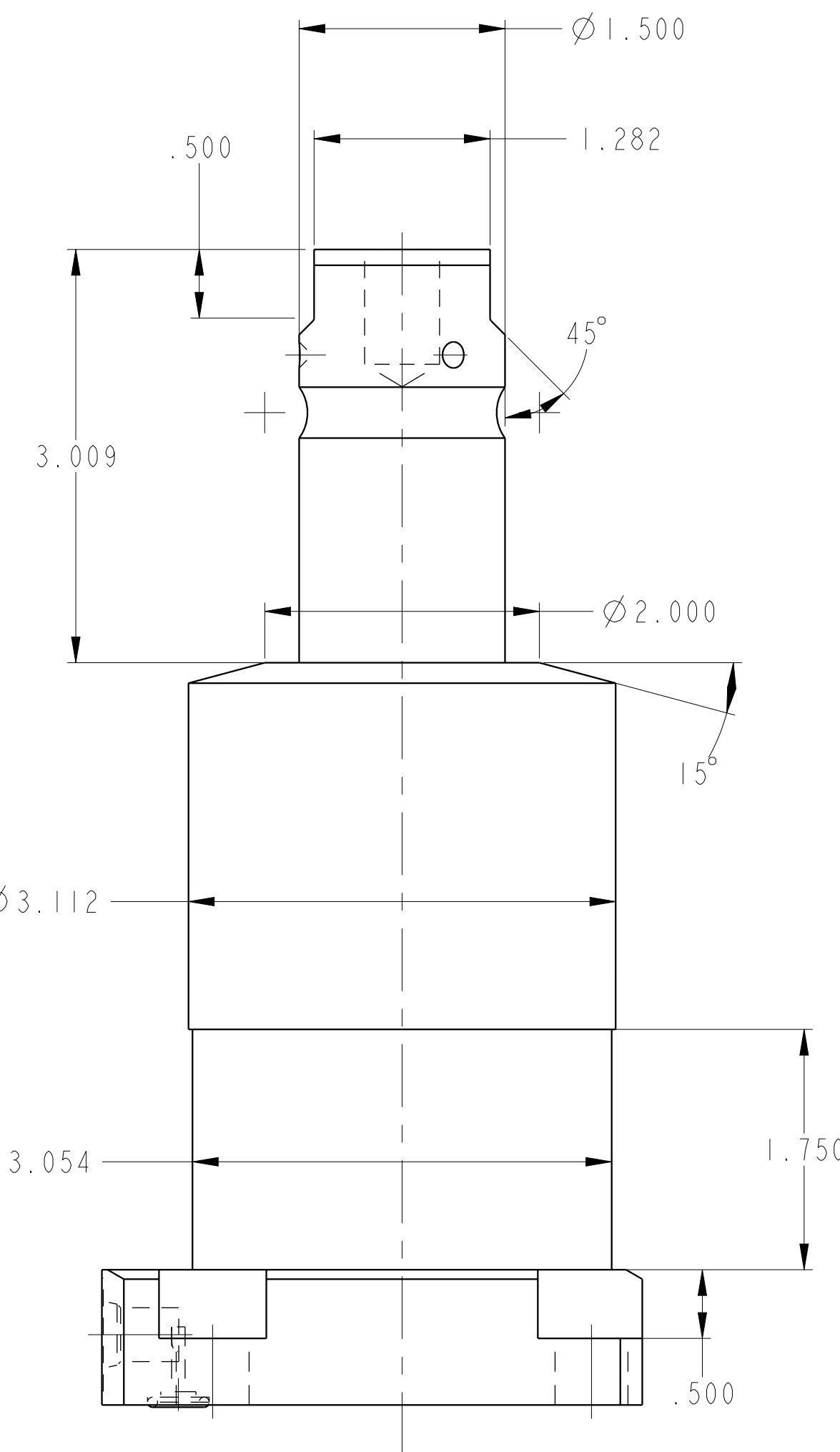
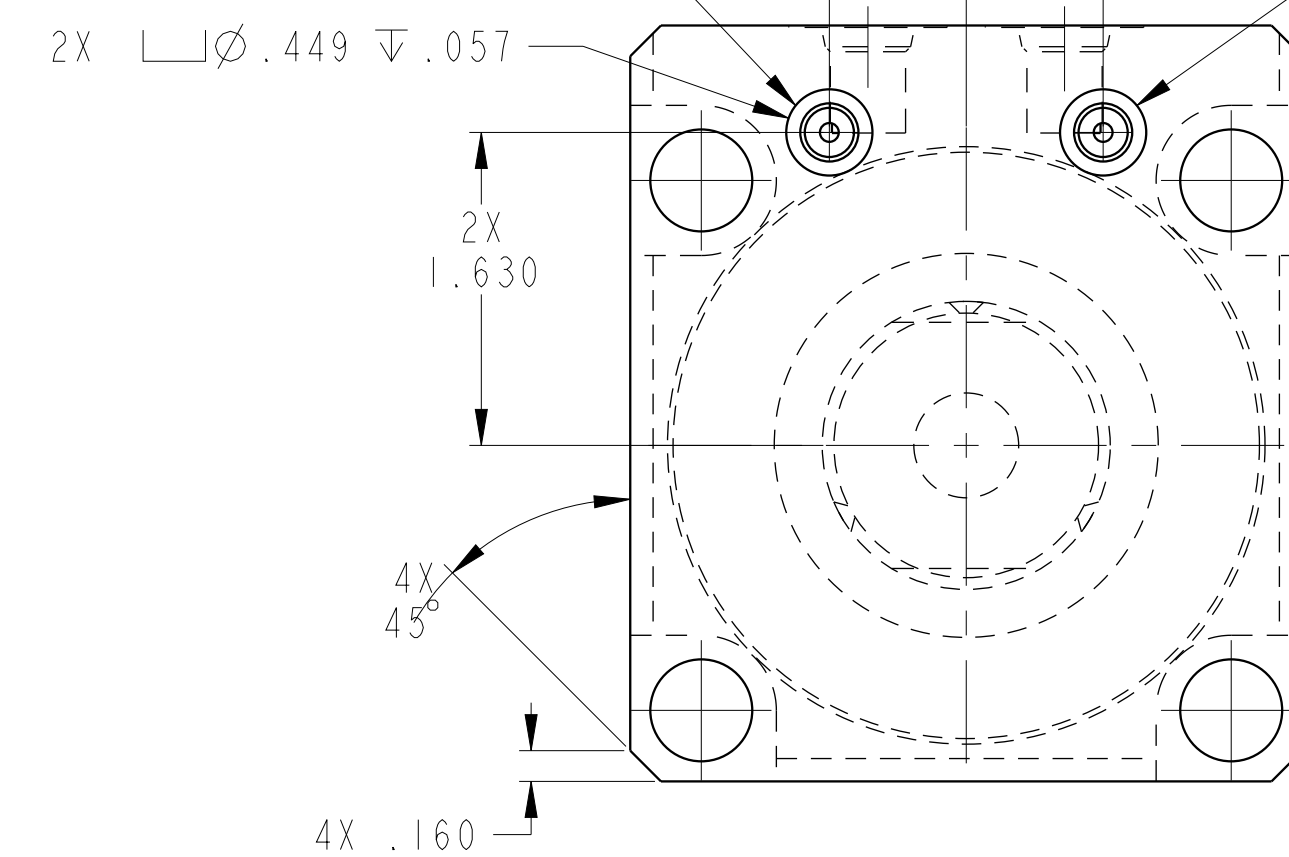


ILC14222105 REV A ECN 3746

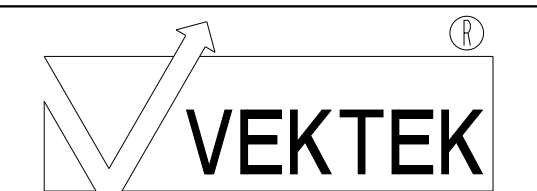


SAE 4 UNCLAMP PORT .512 SAE 4 CLAMP PORT

MANIFOLD O-RING UNCLAMP PORT 1.426 .713 MANIFOLD O-RING CLAMP PORT



CAD CONTROL DRAWING



VEKTEK, INC.  
1334 E. SIXTH AVE. P.O. BOX 625  
EMPORIA, KS. 66801 U.S.A.

A	3746	RELEASE	JDW	03/27/19
REV	IN ACCORDANCE WITH ECN	EFFECTIVE DATE	REVISED BY	DATE
DRW BY:	JDW	DRAWING STATUS: <b>Released</b>		
DATE:	03/27/19	PRODUCTION APPROVED FOR RELEASED STATUS ONLY		

14222105	A
REFERENCE MODEL	REF REV
TOLERANCES DO NOT APPLY DIMENSIONS ARE NOMINAL	

SIZE	D	REV	A
ILC14222105			