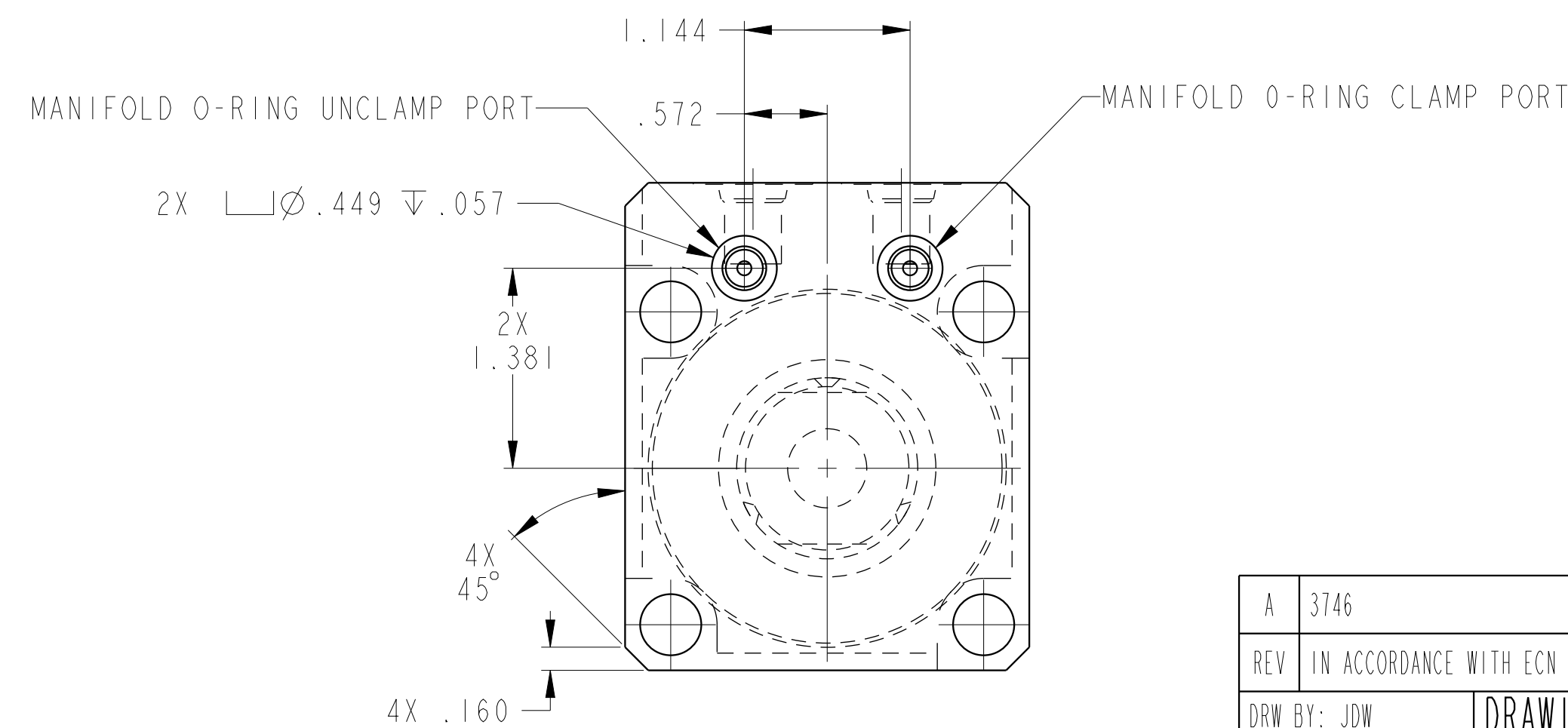
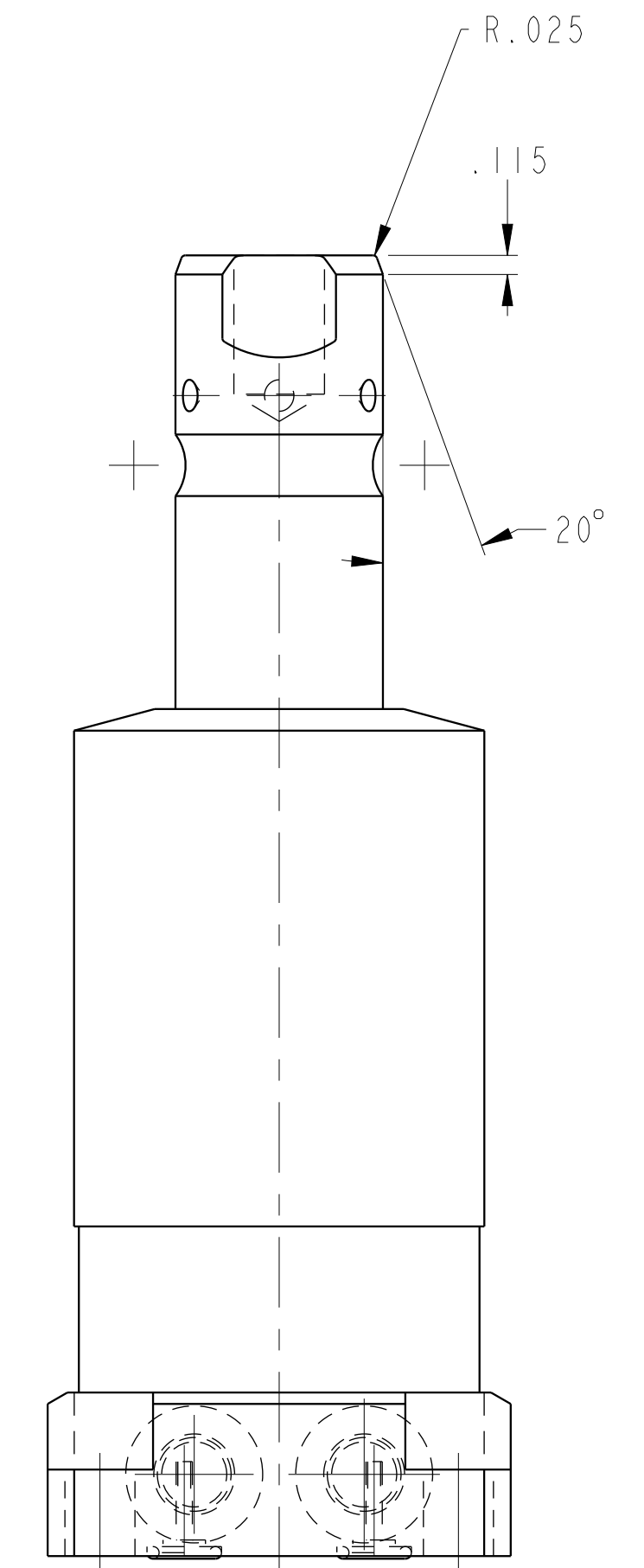
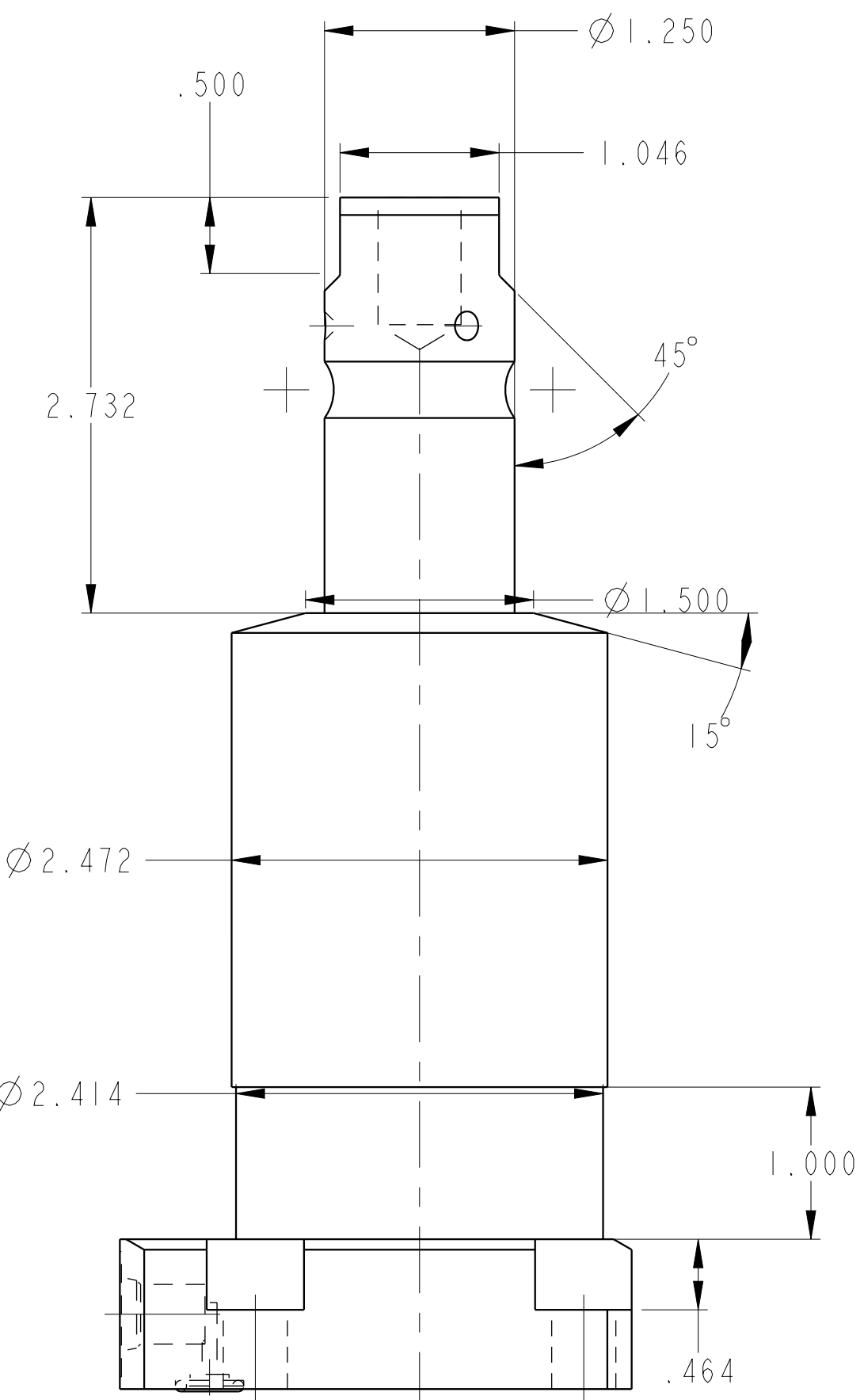
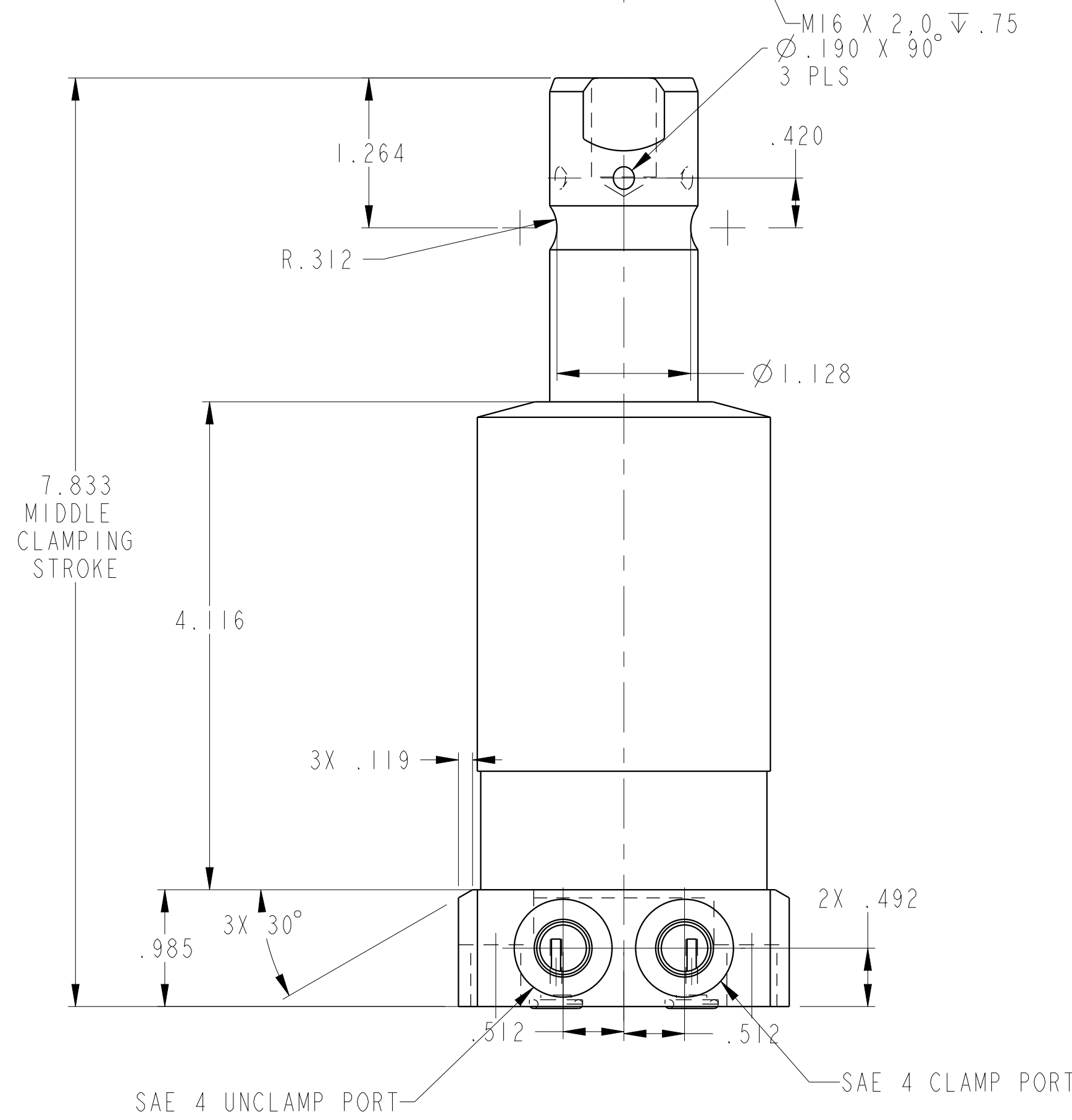
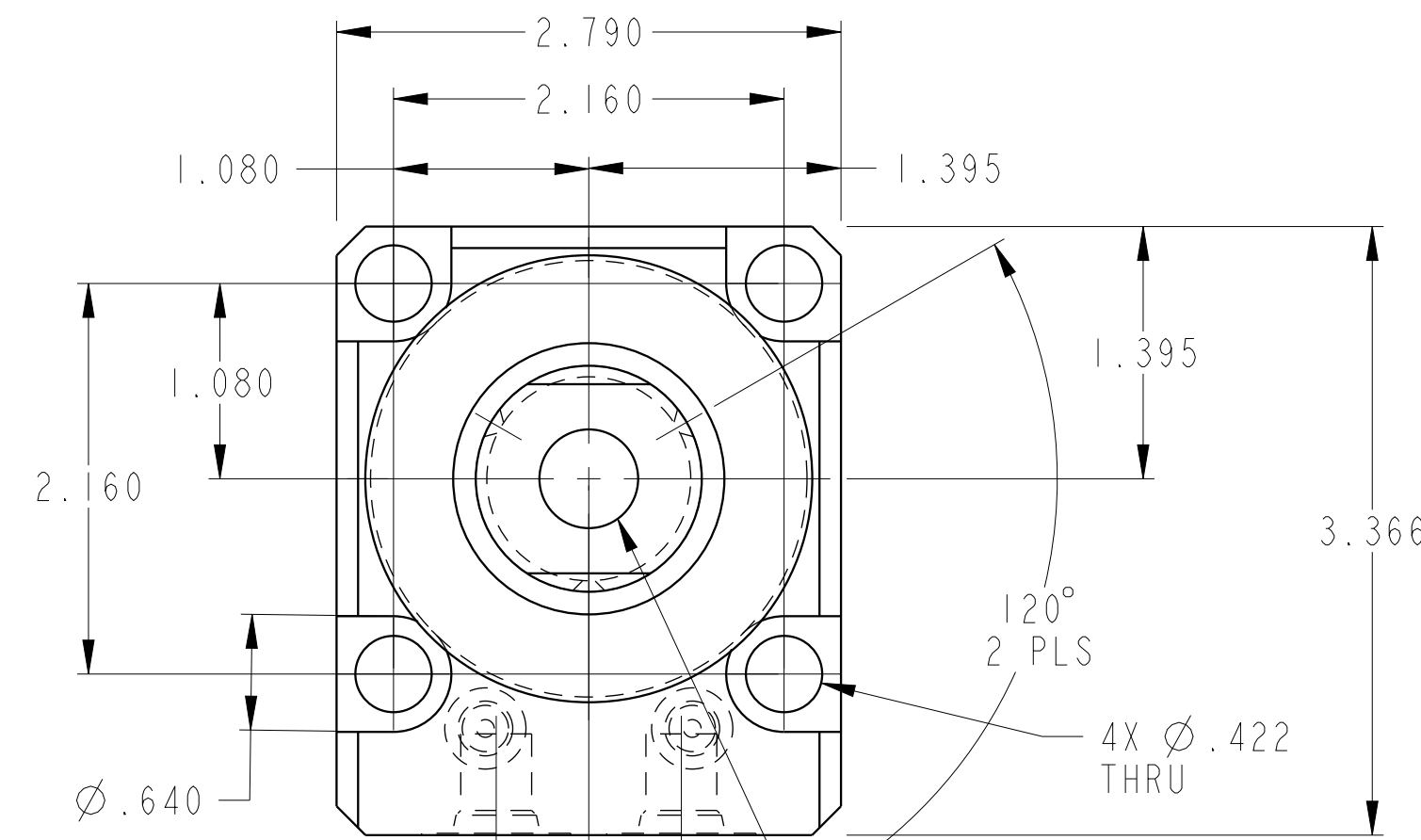
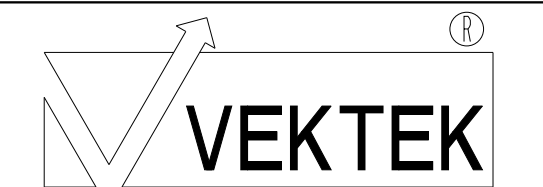


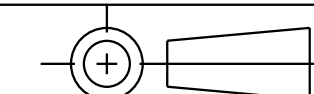
ILC14281803 REV A ECN 3746



CAD CONTROL DRAWING



VEKTEK, INC.
1334 E. SIXTH AVE. P.O. BOX 625
EMPORIA, KS. 66801 U.S.A.



A	3746	RELEASE	JDW	03/27/19
REV	IN ACCORDANCE WITH ECN	EFFECTIVE DATE	REVISED BY	DATE
DRW BY:	JDW	DRAWING STATUS: Released		
DATE:	03/27/19	PRODUCTION APPROVED FOR RELEASED STATUS ONLY		

TOLERANCES DO NOT APPLY
DIMENSIONS ARE NOMINAL

SIZE D ILC14281803 REV A

FORM FEG036, Rev. B