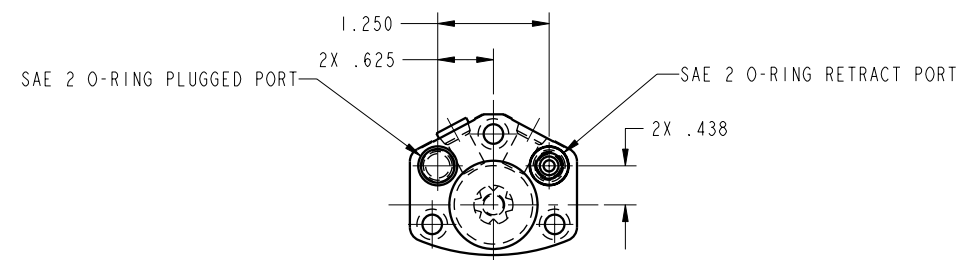
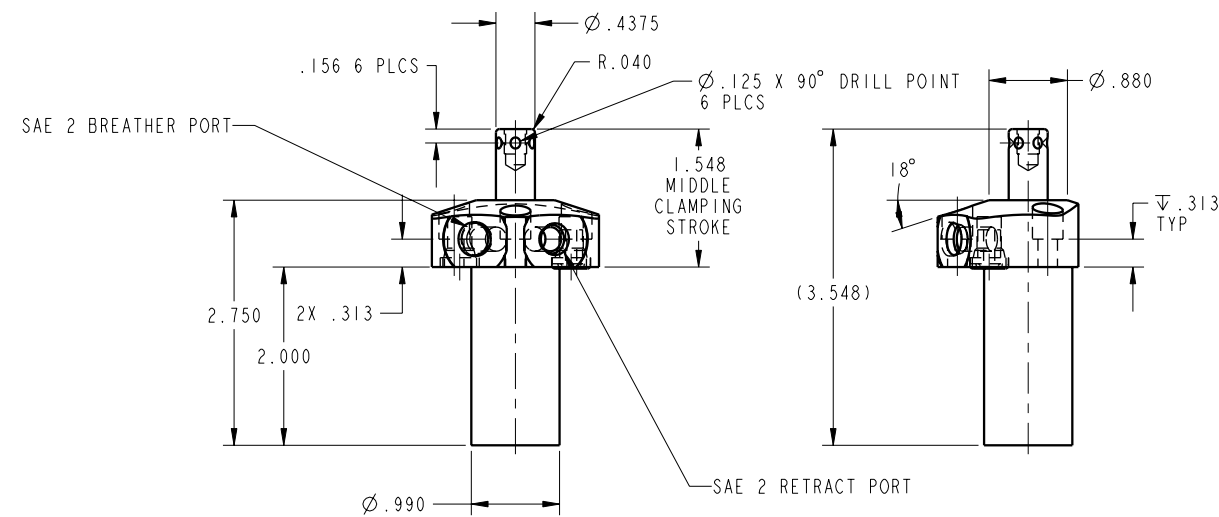


ILC14610501R REV D ECN 2510  
SCALE 1.000

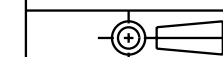


CAD CONTROL  
DRAWING



VEKTEK, INC.  
1334 E. SIXTH AVE. P.O. BOX 625  
EMPORIA, KS. 66801 U.S.A.

REV	D 2510	RELEASE	JDW	04/04/13	14610501R	D	SC, TF, SA, HS, RH, 450
REV	IN ACCORDANCE WITH ECN	EFFECTIVE DATE	REVISED BY	DATE	REFERENCE MODEL	REF REV	''''
DRW BY:	K. ROEMER	DRAWING STATUS: <b>Released</b>			TOLERANCES DO NOT APPLY DIMENSIONS ARE NOMINAL		SIZE
DATE:	02-12-02	PRODUCTION APPROVED FOR RELEASED STATUS ONLY					D ILC14610501R REV D



FORM FEQ036, Rev. A

SHEET 1 OF 1