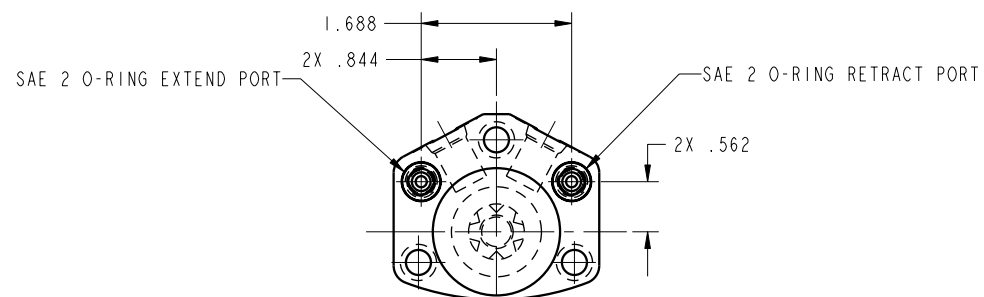
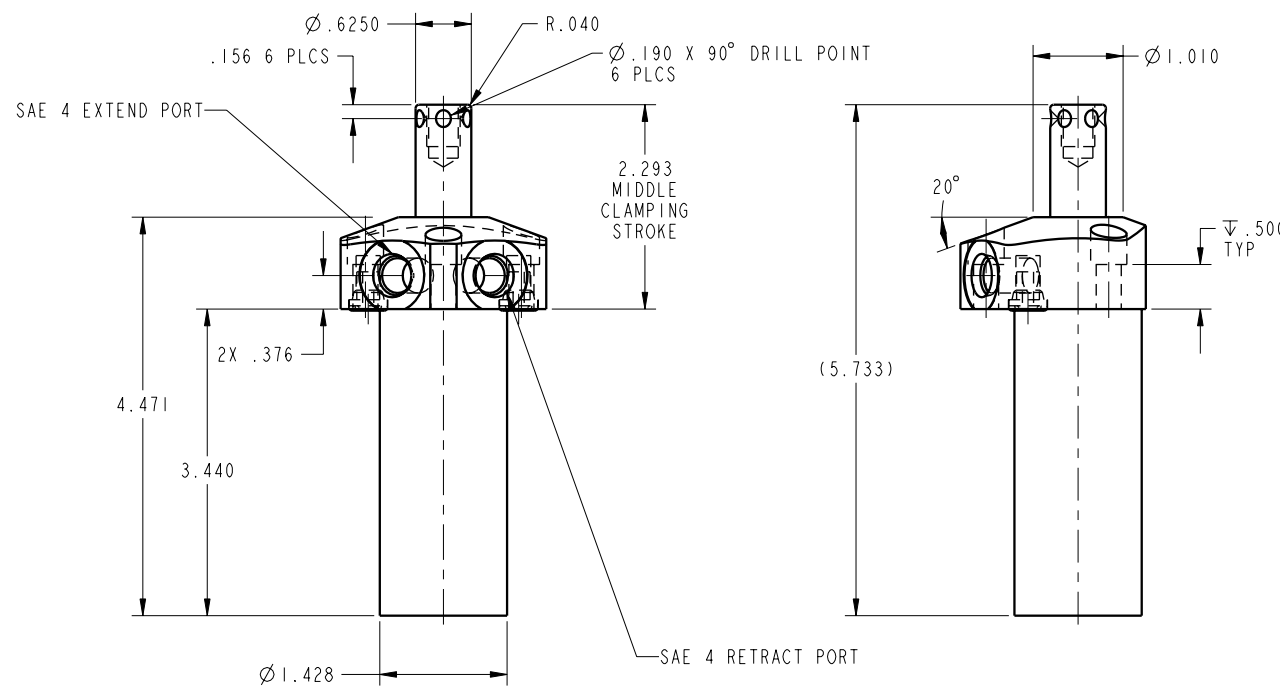


ILC14620910L REV D ECN 2510



CAD CONTROL DRAWING



VEKTEK, INC.  
1334 E. SIXTH AVE. P.O. BOX 625  
EMPORIA, KS. 66801 U.S.A.

D 2510	RELEASE	JDW	04/04/13	14620910L	A	SC, HS, TF, 1100, LS, DA, LH
REV IN ACCORDANCE WITH ECN	EFFECTIVE DATE	REVISED BY	DATE	REFERENCE MODEL	REF REV	''''
DRW BY: K. ROEMER	DRAWING STATUS: <b>Released</b>			TOLERANCES DO NOT APPLY	SIZE	ILC14620910L
DATE: 02-12-02	PRODUCTION APPROVED FOR RELEASED STATUS ONLY			DIMENSIONS ARE NOMINAL	D	REV D

FORM FE036, Rev. A