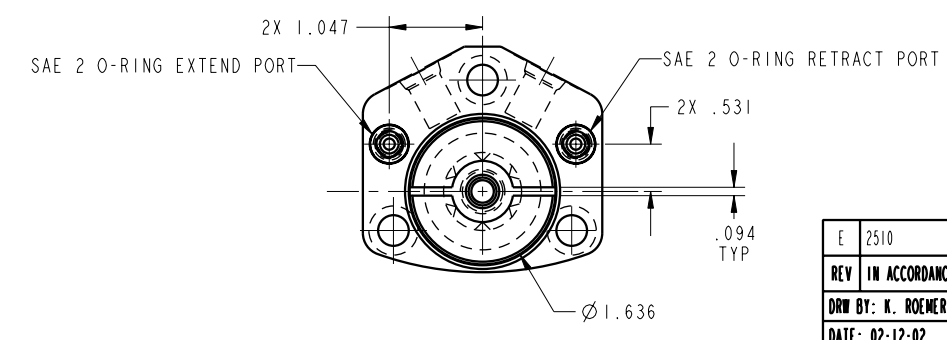
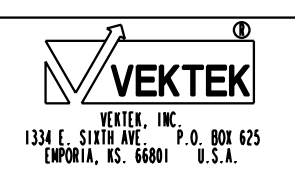


ILC1462130ILPR REV E ECN 2510



CAD CONTROL DRAWING



E 2510	RELEASE	JDW	04/04/13	1462130ILPR	A	SC, TF, DA, HS, LH, PR, 2600
REV IN ACCORDANCE WITH ECN	EFFECTIVE DATE	REVISED BY	DATE	REFERENCE MODEL	REF REV	''''
DRW BY: K. ROEMER	DRAWING STATUS: Released			TOLERANCES DO NOT APPLY	SIZE	REV
DATE: 02-12-02	PRODUCTION APPROVED FOR RELEASED STATUS ONLY			DIMENSIONS ARE NOMINAL	D	ILC1462130ILPR E

FORM FE036, Rev. A