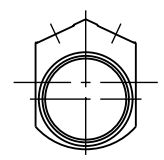


ILC15020500 REV B ECN 2404



CAD CONTROL DRAWING



VEKTEK, INC.  
1334 E. SIXTH AVE. P.O. BOX 625  
EMPORIA, KS. 66801 U.S.A.

B	2404	RELEASE	GAR	5-14-12	15020500	K	SC, TB, DA, 450
REV	IN ACCORDANCE WITH ECN	EFFECTIVE DATE	REVISED BY	DATE	REFERENCE MODEL	REF REV	''''
DRW BY:	K. ROEMER	DRAWING STATUS: <b>Released</b>			TOLERANCES DO NOT APPLY DIMENSIONS ARE NOMINAL		SIZE D ILC15020500 REV B
DATE:	03-18-02	PRODUCTION APPROVED FOR RELEASED STATUS ONLY					FORM FEG036, Rev. A