

1

2

3

4

D

D

C

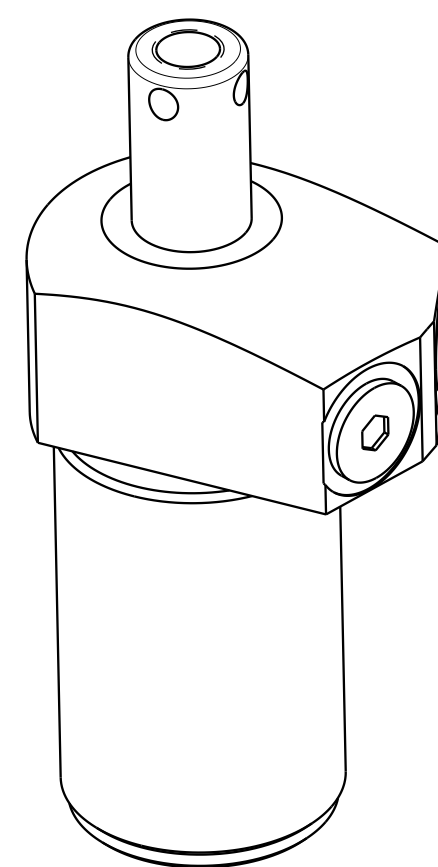
C

B

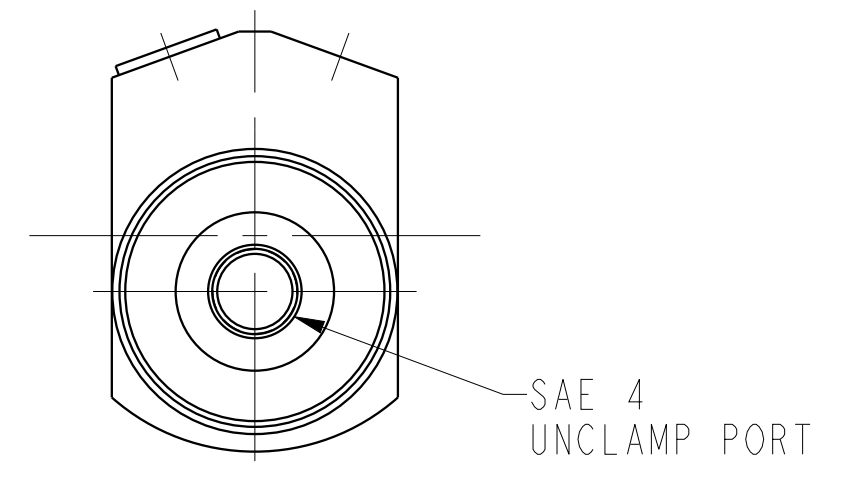
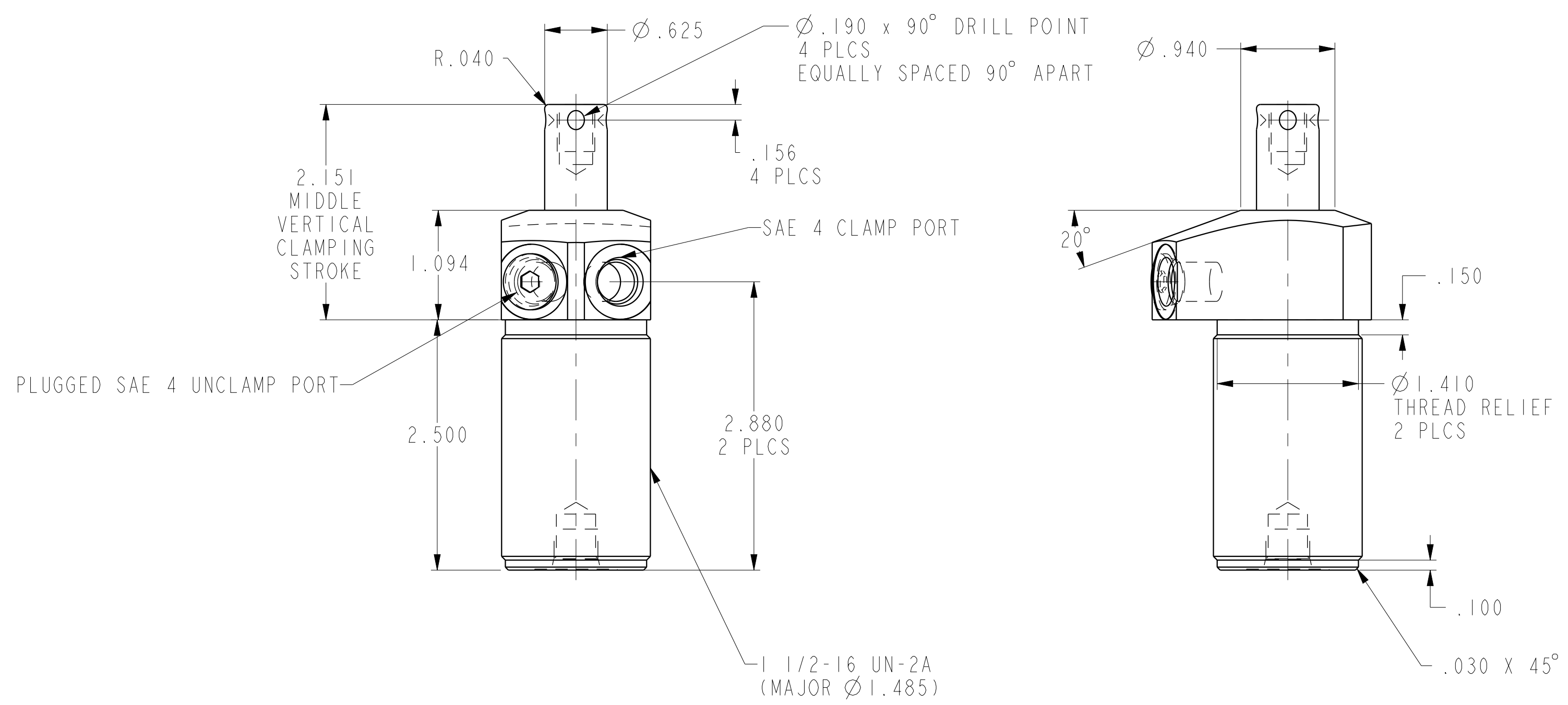
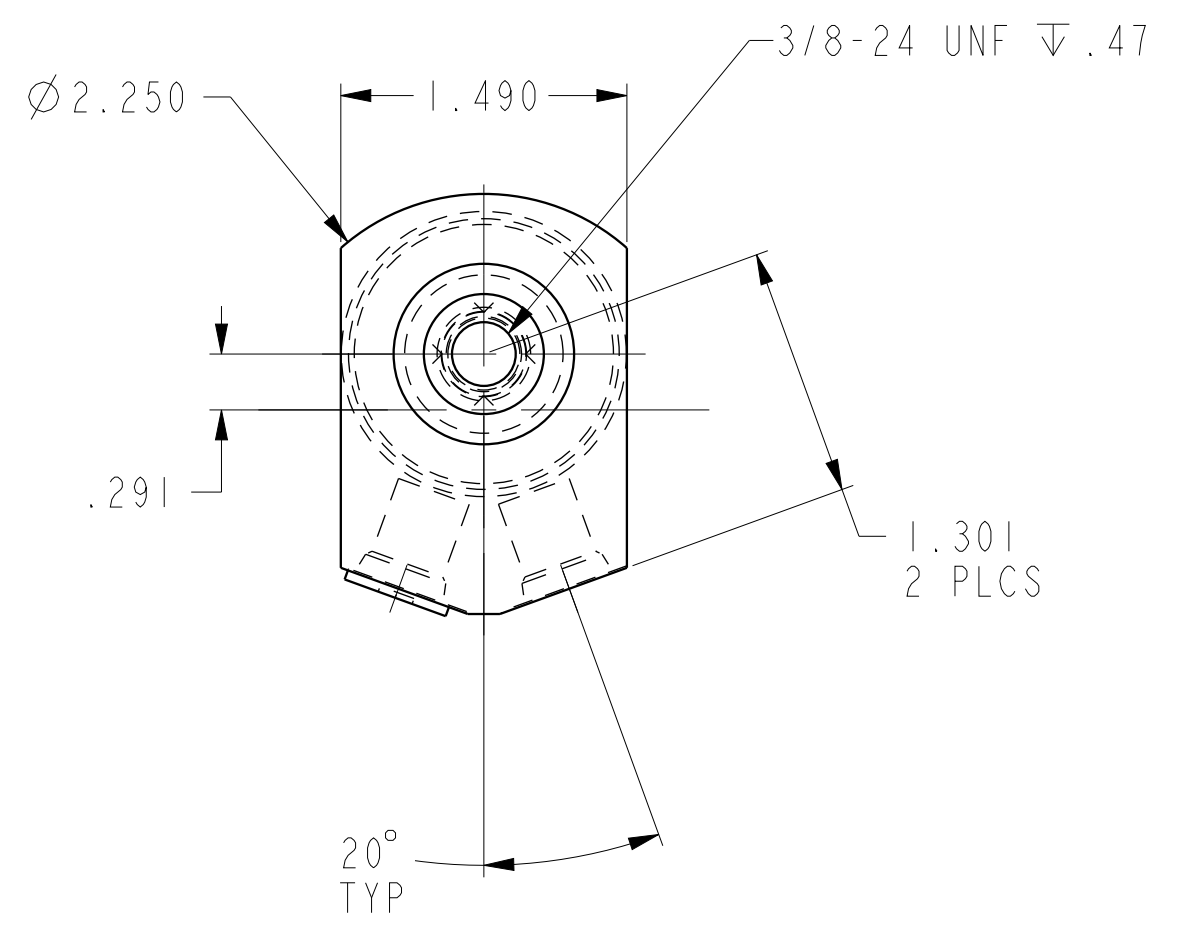
B

A

A



ILC15020929S REV A ECN 2895



| | | |
|------------------------|--|--|
| CAD CONTROL DRAWING | | |
| | VEKTEK, INC. 1334 E. SIXTH AVE. P.O. BOX 625 EMPORIA, KS. 66801 U.S.A. | |

| | | | | | | | |
|---------|------------------------|--|------------|----------|-------------------------|---------|---------------------------|
| A | 2895 | RELEASE | JDW | 08/05/15 | 15020929 | E | SC, TB, DA, 1100, FC, STR |
| REV | IN ACCORDANCE WITH ECN | EFFECTIVE DATE | REVISED BY | DATE | REFERENCE MODEL | REF REV | |
| DRW BY: | JDW | DRAWING STATUS: Released | | | TOLERANCES DO NOT APPLY | | SIZE |
| DATE: | 08/05/15 | PRODUCTION APPROVED FOR RELEASED STATUS ONLY | | | DIMENSIONS ARE NOMINAL | | D |
| | | | | | I L C 1 5 0 2 0 9 2 9 S | | REV |
| | | | | | | | A |

1

2

3

4

SHEET 1 OF 1