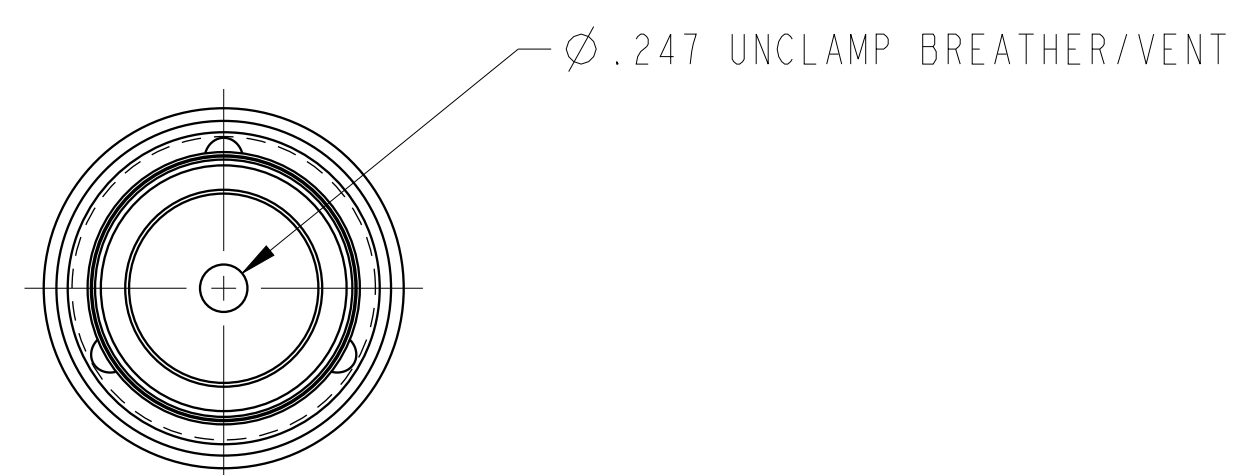
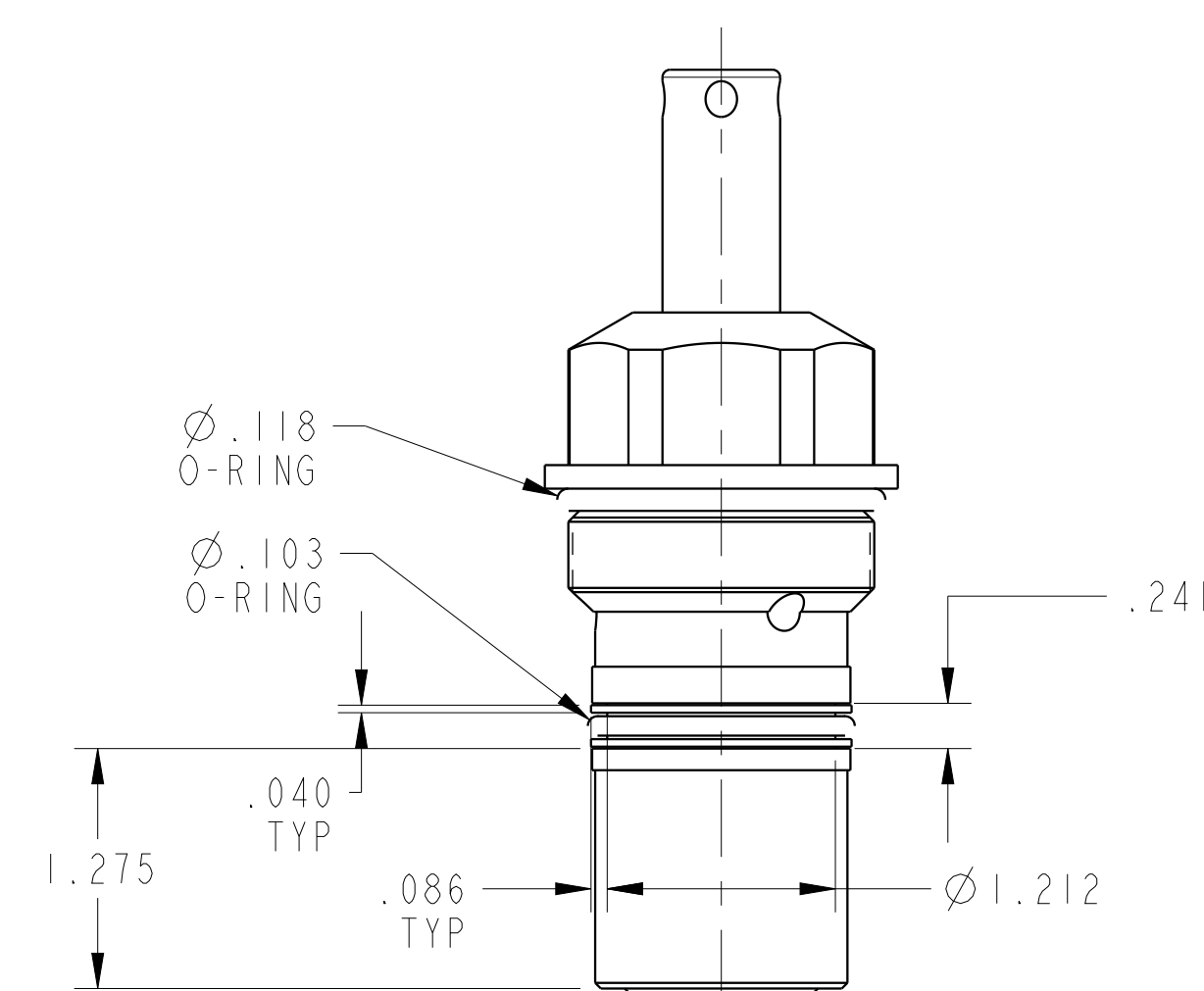
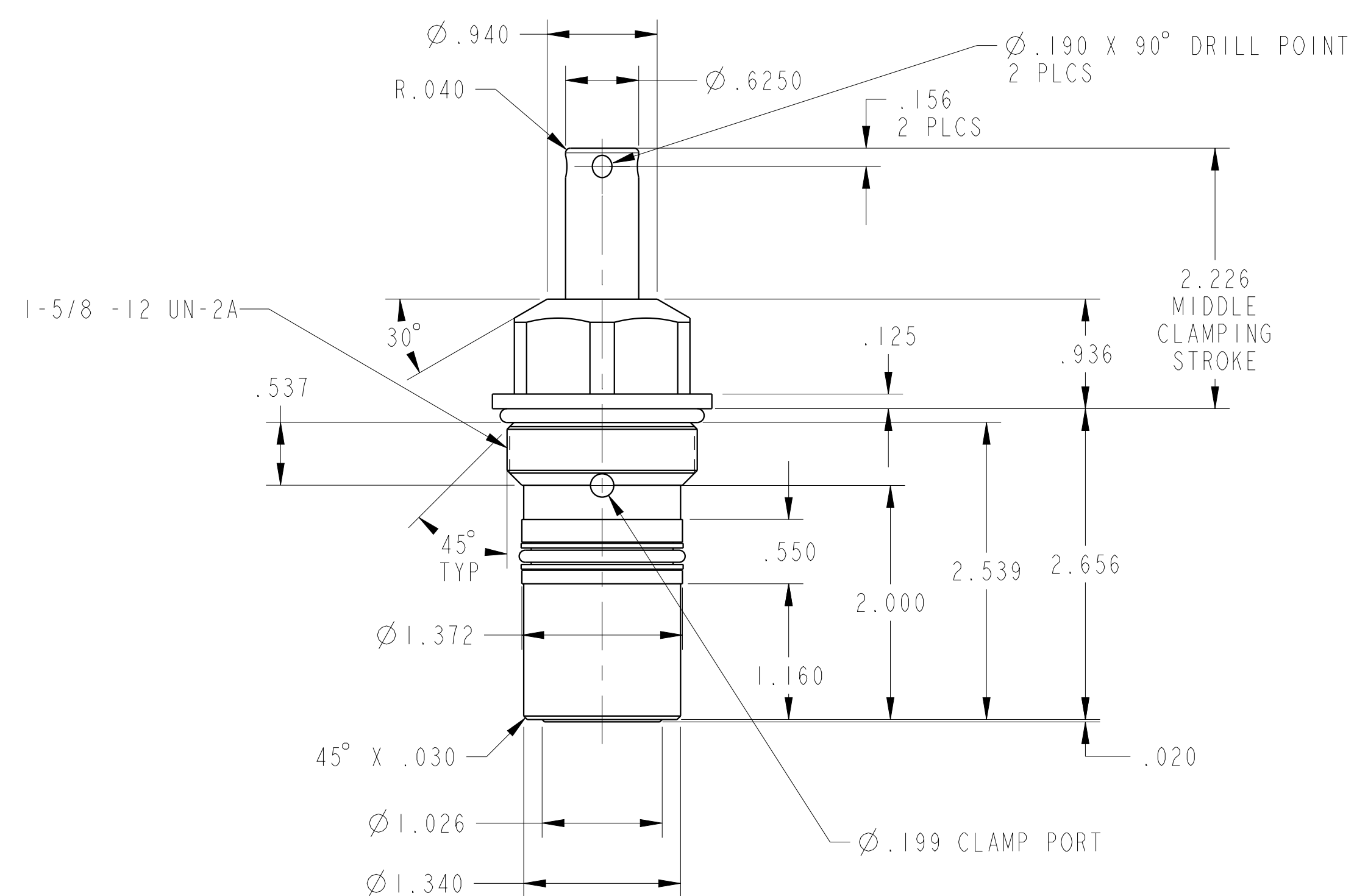
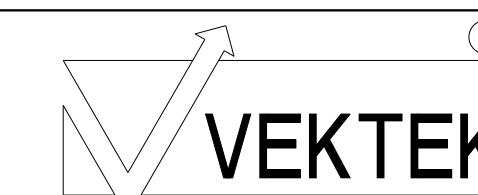


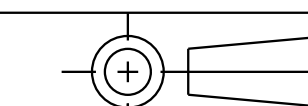
ILC15110902S REV A ECN4446



CAD CONTROL
DRAWING



VEKTEK, INC.
1334 E. SIXTH AVE. P.O. BOX 625
EMPORIA, KS. 66801 U.S.A.



A	4446	RELEASED	ALS	5/17/21	15110902S	A	SC, CM, 1100, SA, STR
REV	IN ACCORDANCE WITH ECN	EFFECTIVE DATE	REVISED BY	DATE	REFERENCE MODEL	REF REV	
DRW BY:	ALS	DRAWING STATUS: Released			TOLERANCES DO NOT APPLY DIMENSIONS ARE NOMINAL		SIZE D
DATE:	5/17/21	PRODUCTION APPROVED FOR RELEASED STATUS ONLY			ILC15110902S		REV A