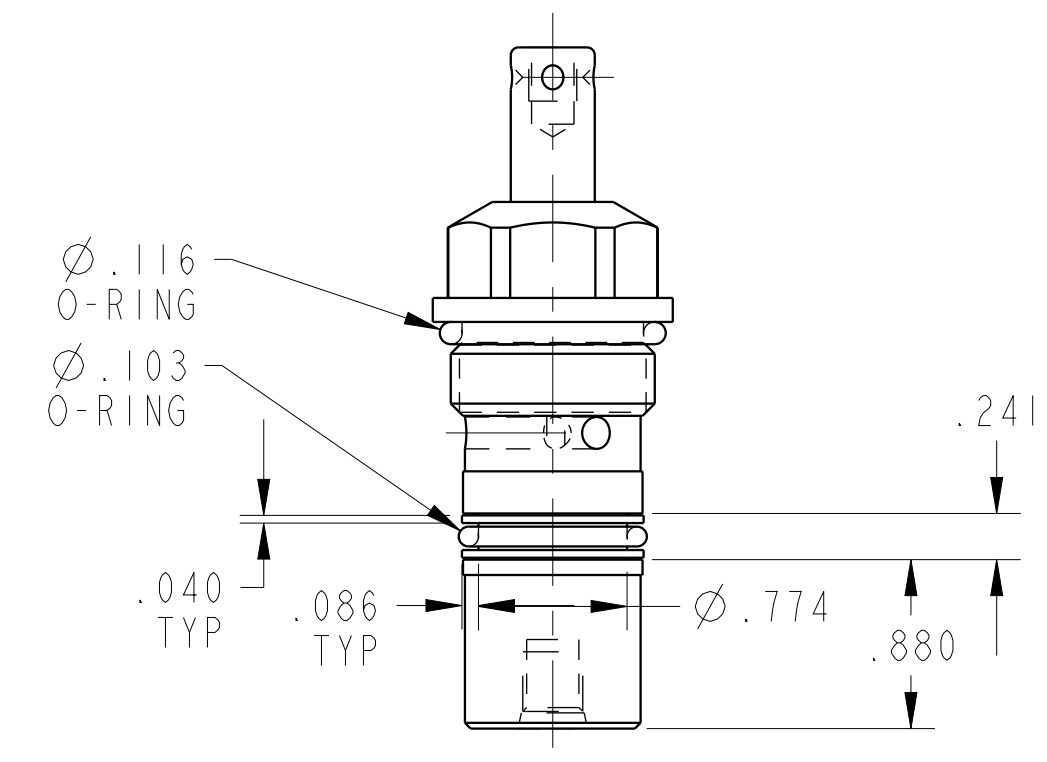
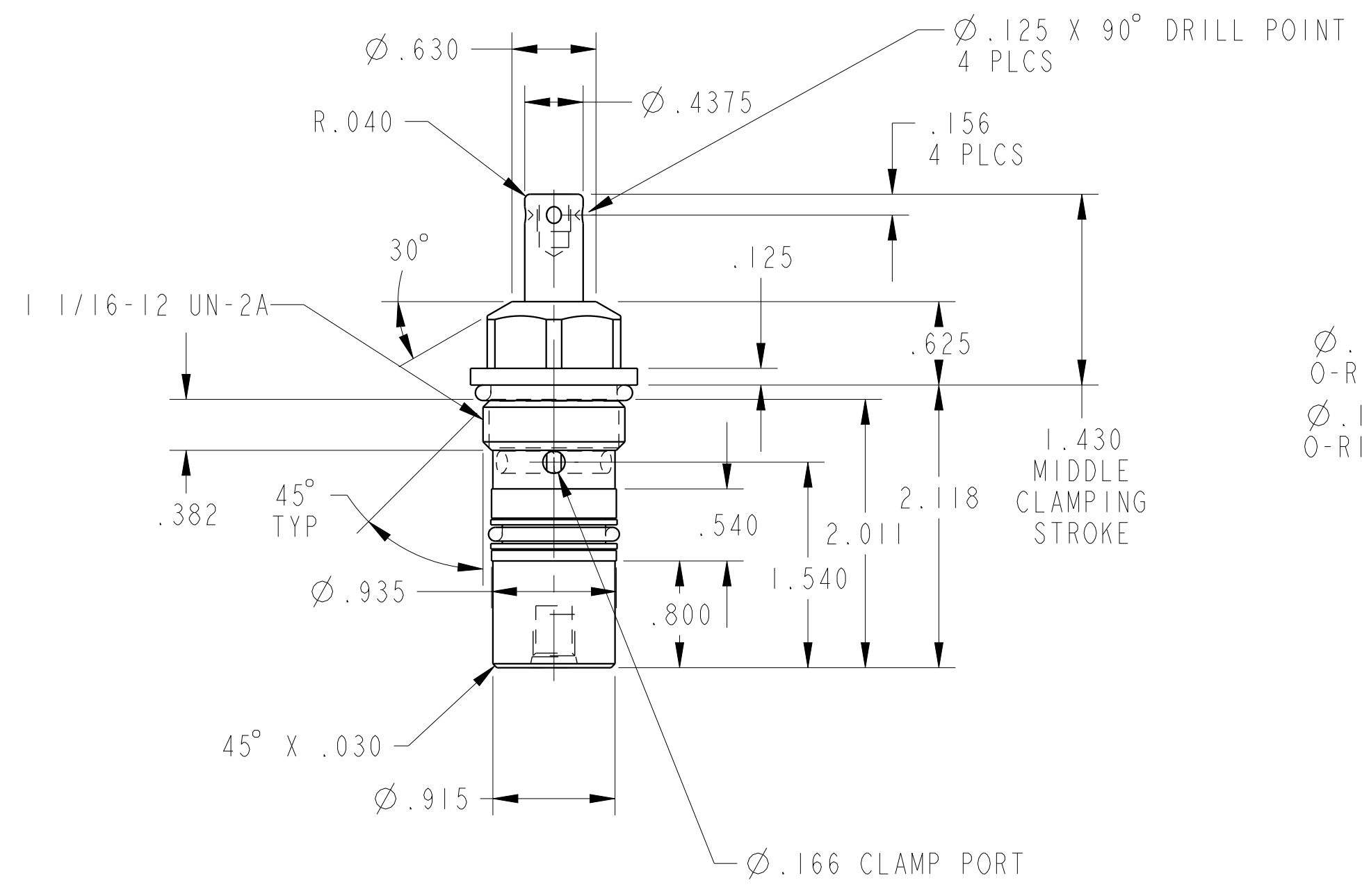

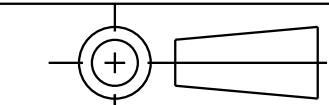


ILC15120502S REV A ECN 4609



CAD CONTROL DRAWING	 VEKTEK, INC. 1334 E. SIXTH AVE. P.O. BOX 625 EMPORIA, KS. 66801 U.S.A.	
		

A	4609	RELEASED	RLK	1/21/22	15120502S	A	SC, CM, 450, DA, STR
REV	IN ACCORDANCE WITH ECN	EFFECTIVE DATE	REVISED BY	DATE	REFERENCE MODEL	REF REV	
DRW BY:	RLK	DRAWING STATUS: Released			TOLERANCES DO NOT APPLY		SIZE
DATE:	1/21/22	PRODUCTION APPROVED FOR RELEASED STATUS ONLY			DIMENSIONS ARE NOMINAL		D

ILC15120502S REV A