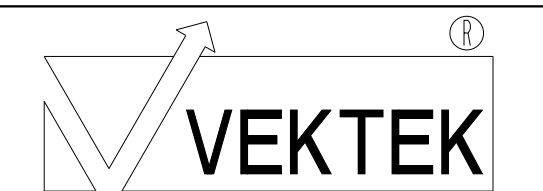
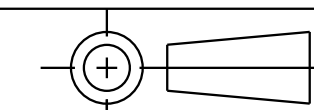


ILC15121302S REV A ECN4446

CAD CONTROL
DRAWING



VEKTEK, INC.
1334 E. SIXTH AVE. P.O. BOX 625
EMPORIA, KS. 66801 U.S.A.



A	4446	RELEASED	ALS	5/17/21	15121302S	A	SC, CM, 2600, DA, STR
REV	IN ACCORDANCE WITH ECN	EFFECTIVE DATE	REVISED BY	DATE	REFERENCE MODEL	REF REV	
DRW BY:	ALS	DRAWING STATUS: Released			TOLERANCES DO NOT APPLY DIMENSIONS ARE NOMINAL		SIZE D
DATE:	5/17/21	PRODUCTION APPROVED FOR RELEASED STATUS ONLY			ILC15121302S		REV A