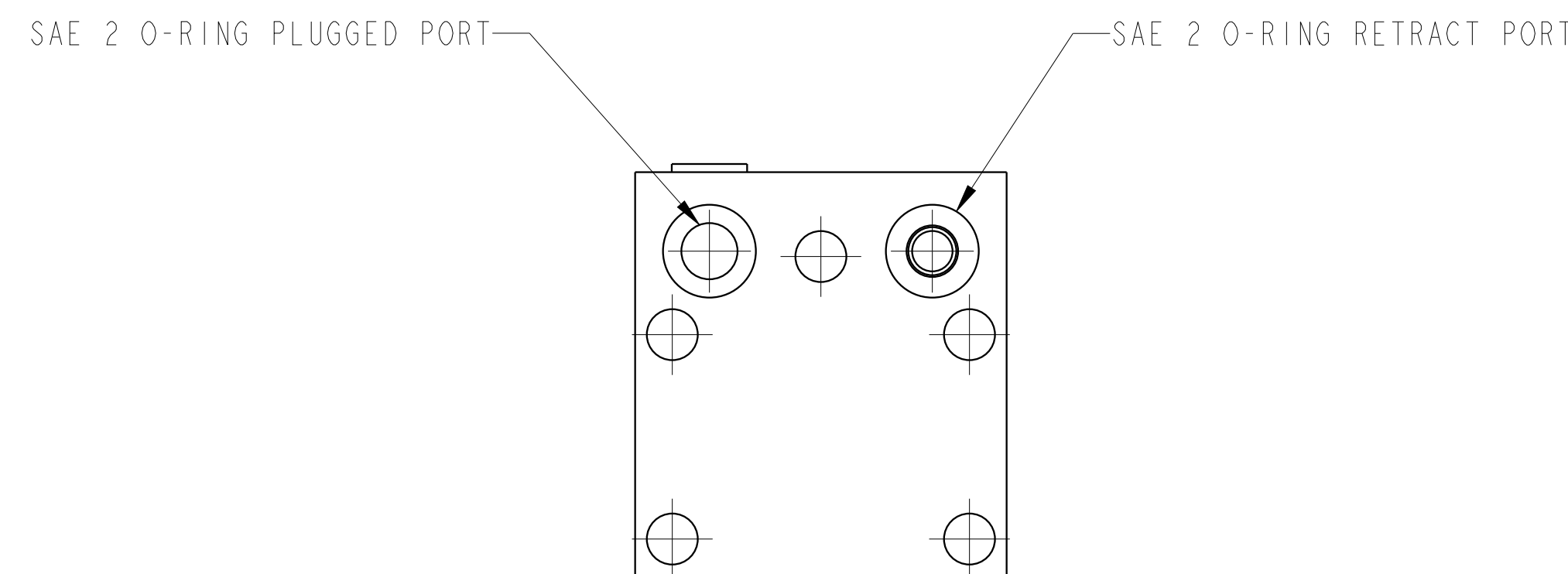
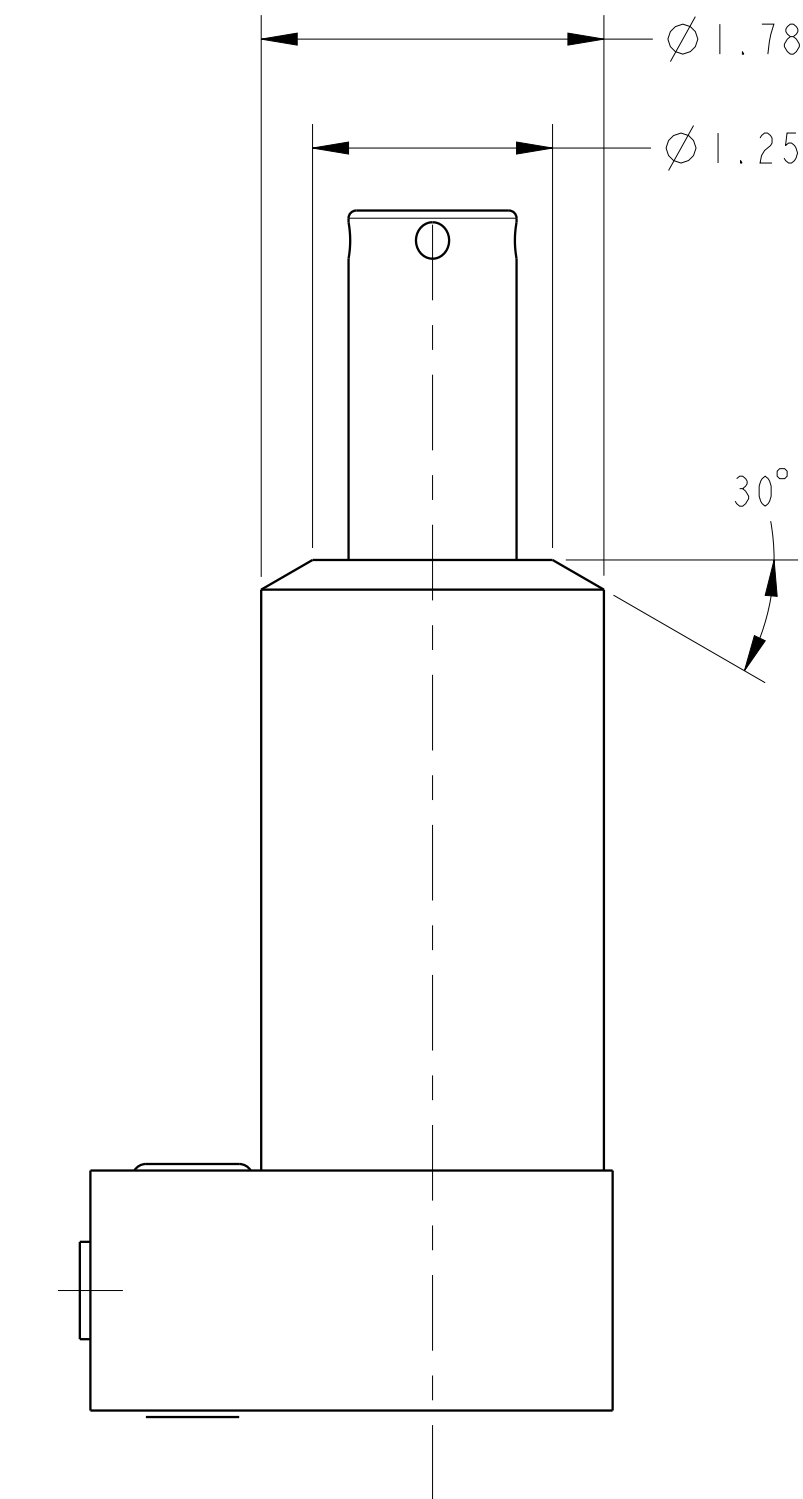
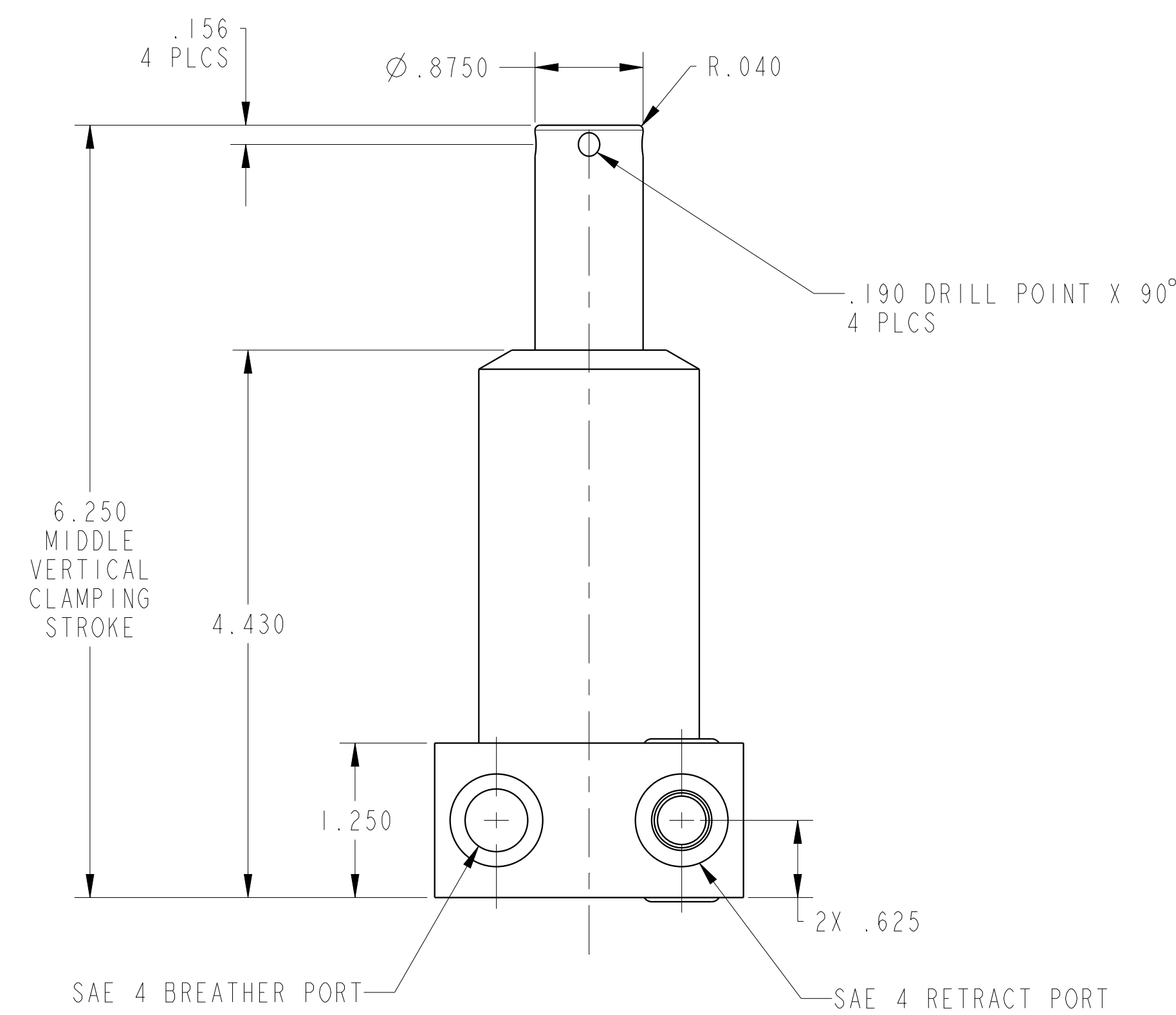
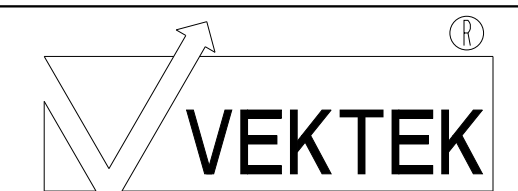


ILC15211304S REV A ECN4448



CAD CONTROL DRAWING



VEKTEK, INC.
1334 E. SIXTH AVE. P.O. BOX 625
EMPORIA, KS. 66801 U.S.A.

| | | | | | | | |
|---------|------------------------|--|------------|---------|-------------------------|---------|-----------------------|
| A | 4448 | RELEASE | ALS | 6/15/21 | 15211304S | A | SC, BF, 2600, SA, STR |
| REV | IN ACCORDANCE WITH ECN | EFFECTIVE DATE | REVISED BY | DATE | REFERENCE MODEL | REF REV | --- |
| DRW BY: | ALS | DRAWING STATUS: Released | | | TOLERANCES DO NOT APPLY | | SIZE |
| DATE: | 5/19/21 | PRODUCTION APPROVED FOR RELEASED STATUS ONLY | | | DIMENSIONS ARE NOMINAL | | D |
| | | | | | ILC15211304S | | REV A |