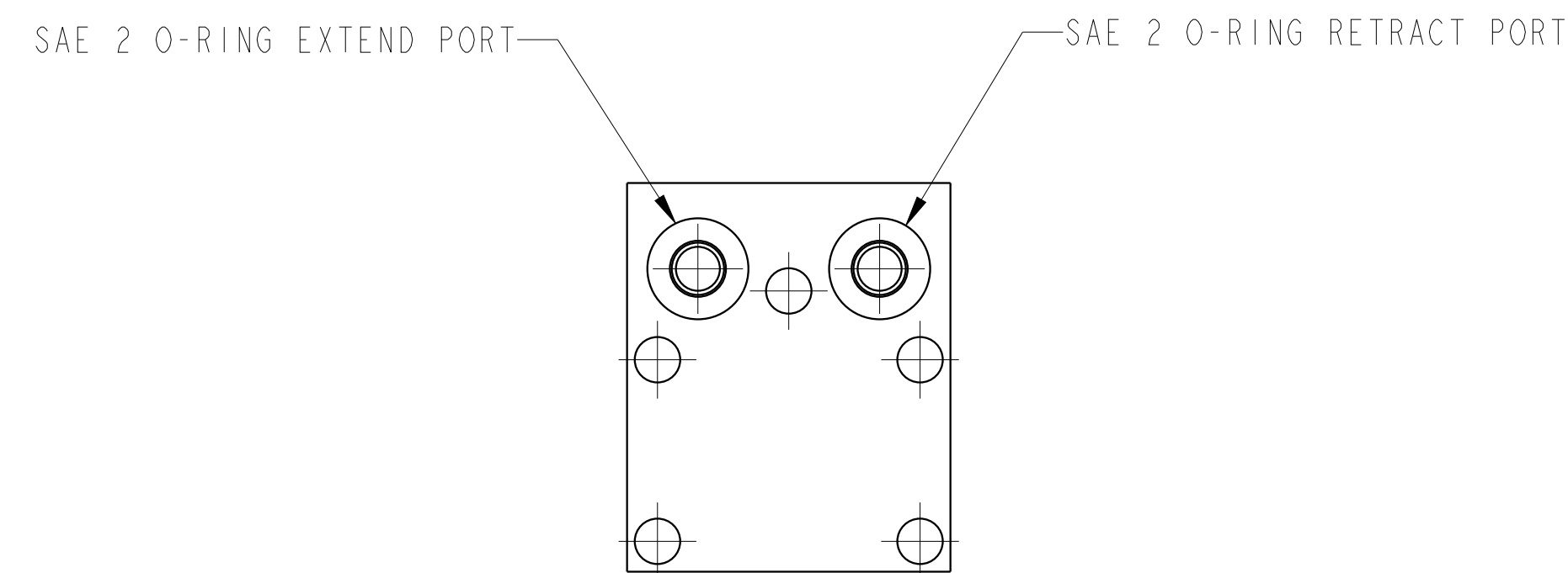
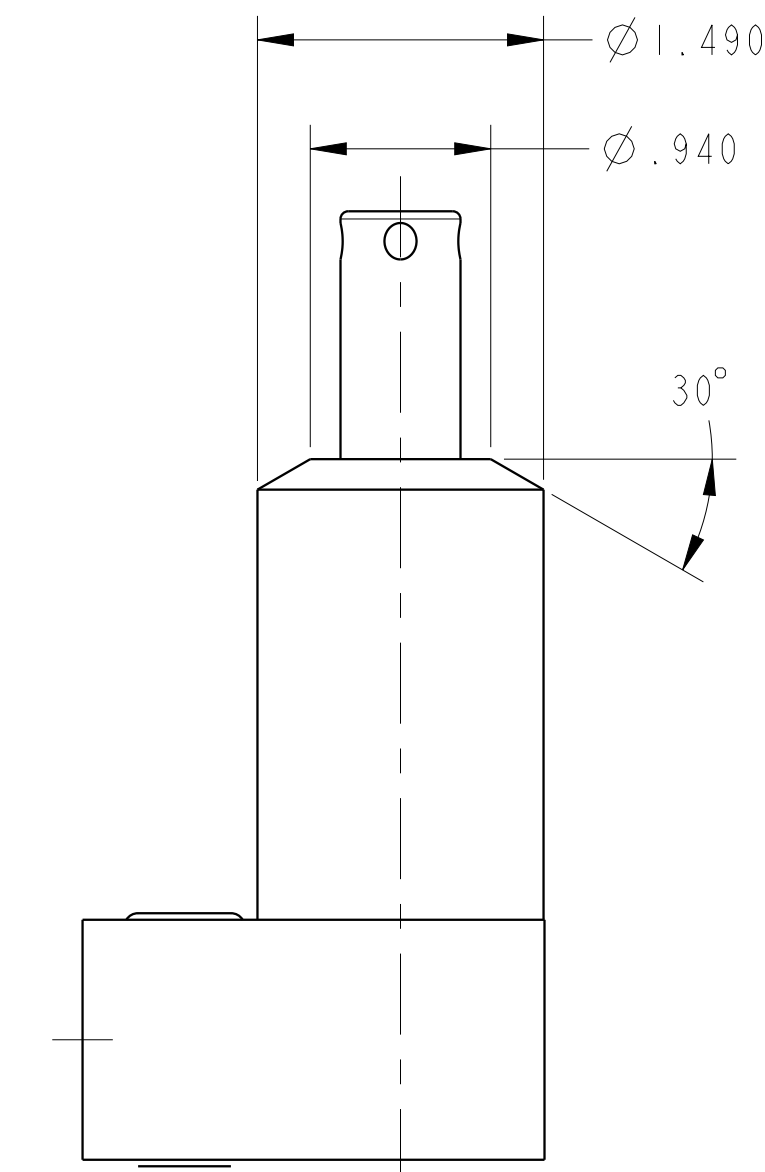
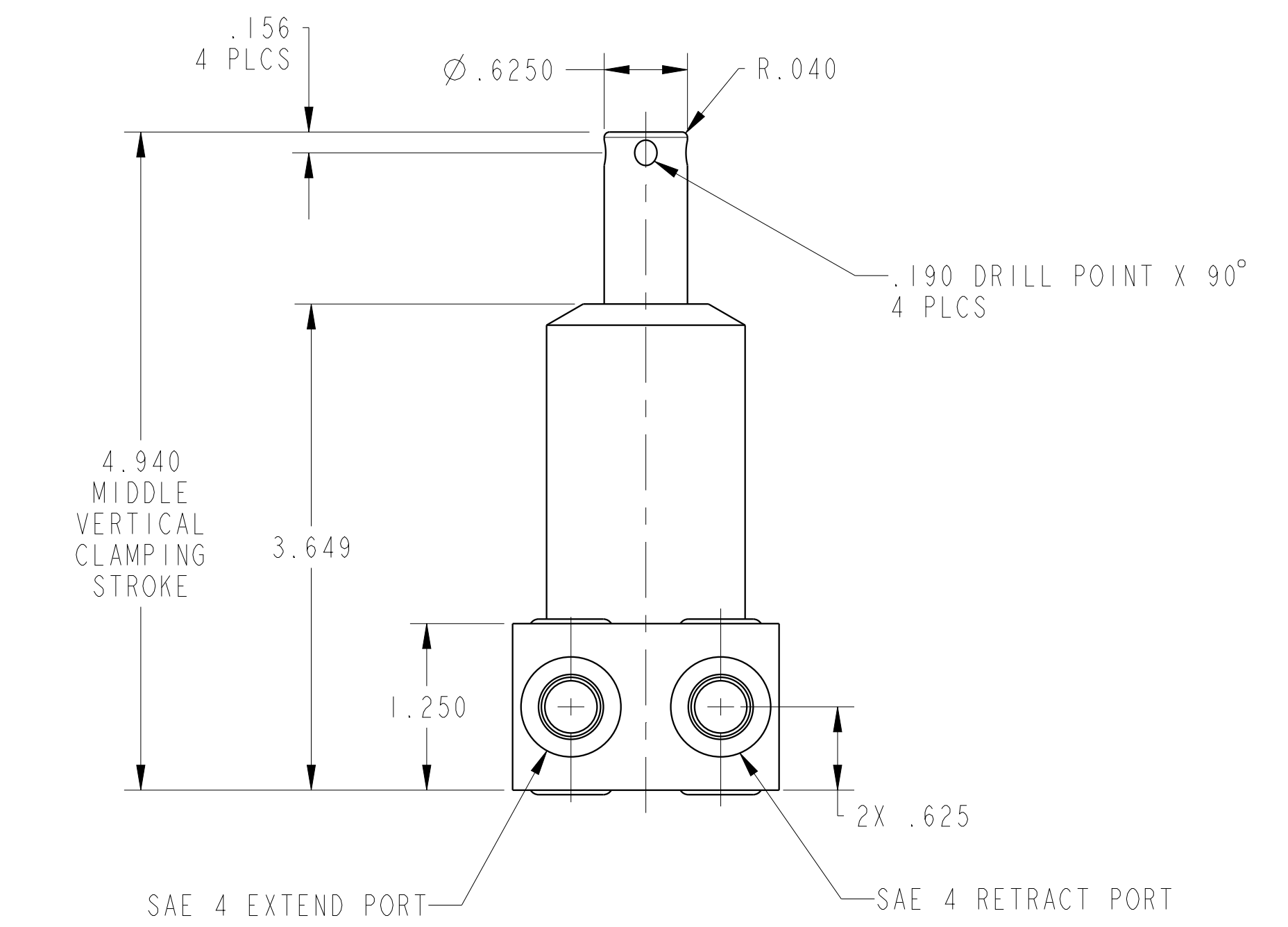
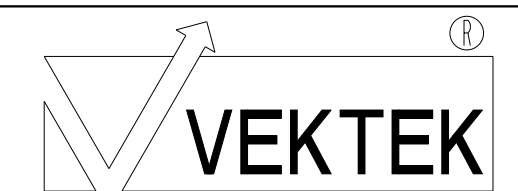


ILC15220904S REV A ECN4448

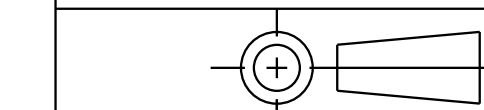


CAD CONTROL DRAWING



VEKTEK, INC.
1334 E. SIXTH AVE. P.O. BOX 625
EMPORIA, KS. 66801 U.S.A.

A	4448	RELEASE	ALS	5/18/21
REV	IN ACCORDANCE WITH ECN	EFFECTIVE DATE	REVISED BY	DATE
DRW BY:	ALS	DRAWING STATUS: Released		
DATE:	5/19/21	PRODUCTION APPROVED FOR RELEASED STATUS ONLY		



TOLERANCES DO NOT APPLY
DIMENSIONS ARE NOMINAL

15220904S	A	SC, BF, I100, DA, STR
REFERENCE MODEL	REF REV	SIZE D
ILC15220904S	REV A	

FORM FEG036, Rev. B