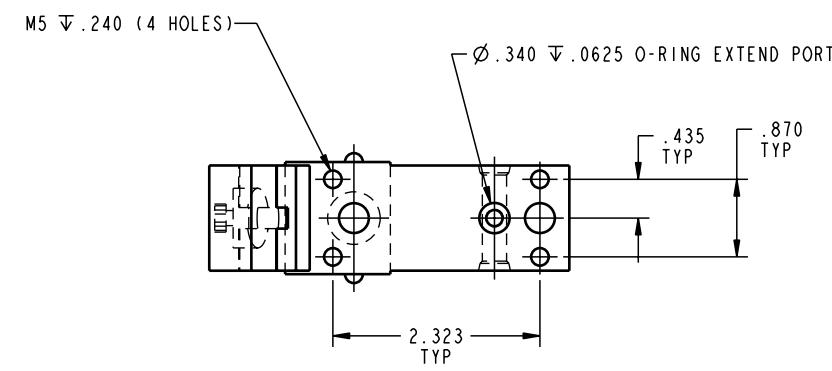
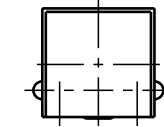
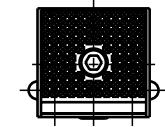
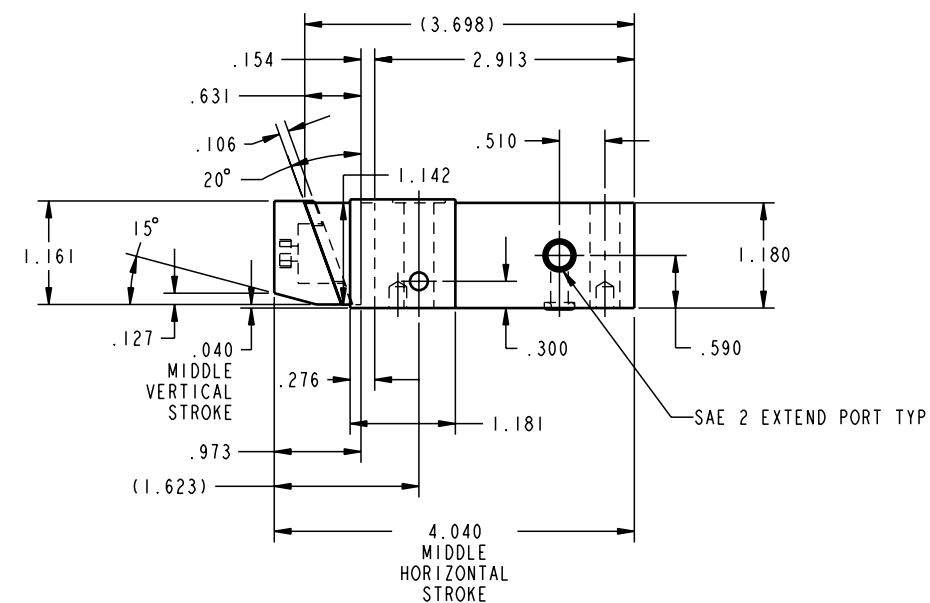


ILC15310500 REV B ECN 649



CAD CONTROL DRAWING



VEKTEK, INC.
1334 E. SIXTH AVE. P.O. BOX 625
EMPORIA, KS. 66801 U.S.A.

B	649	RELEASE	K. ROEMER	04-14-05	15310500	E	CLAMP, PL-DN, MM, SA, SRJ, 290
REV	IN ACCORDANCE WITH ECN	EFFECTIVE DATE	REVISED BY	DATE	REFERENCE MODEL	REF REV	
DRW BY:	K. ROEMER	DRAWING STATUS: Released			TOLERANCES DO NOT APPLY DIMENSIONS ARE NOMINAL		SIZE D
DATE:	08-27-02	PRODUCTION APPROVED FOR RELEASED STATUS ONLY					ILC15310500 REV B

FORM FEG036, Rev. A