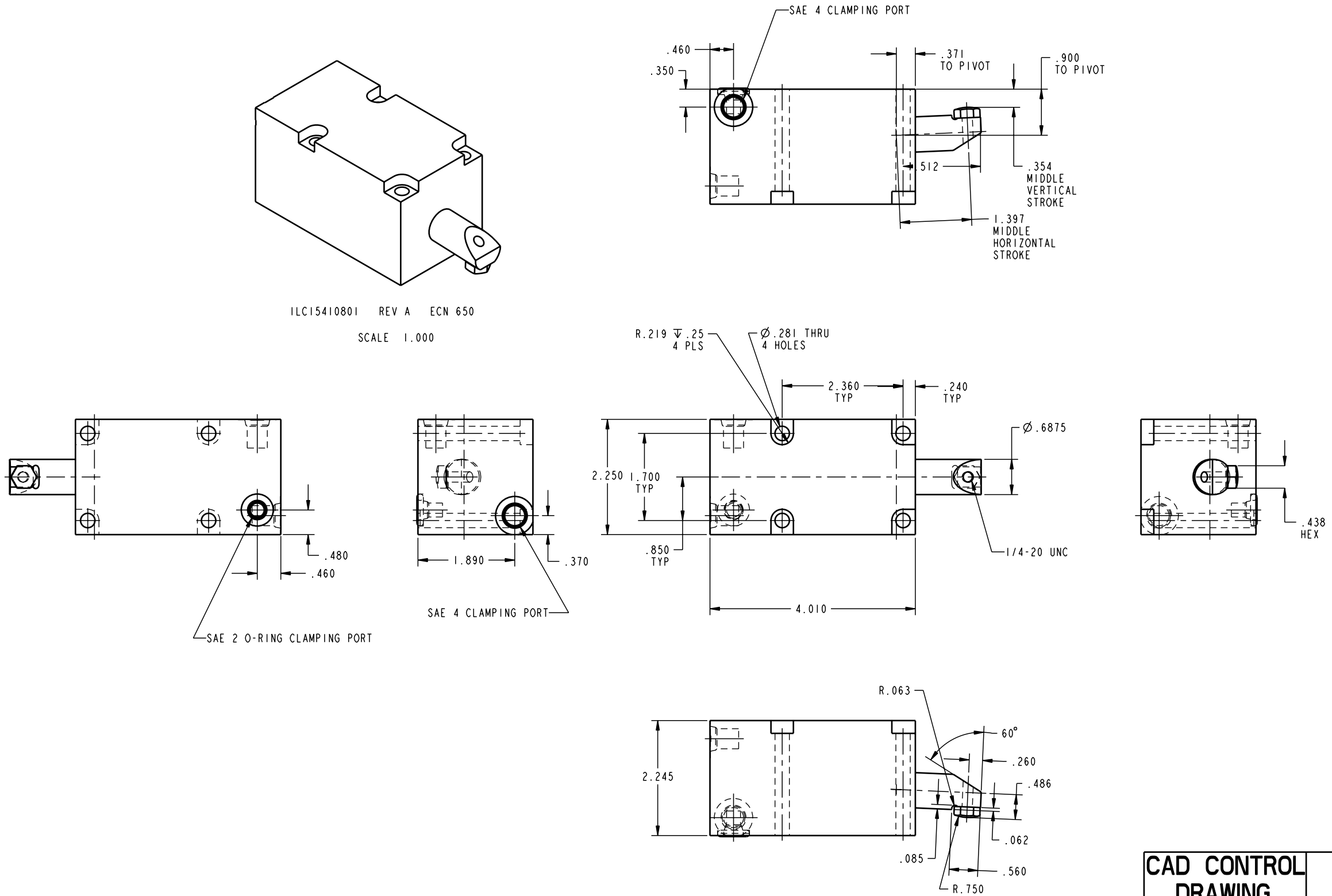


ILC15410801 REV A ECN 650
SCALE 1.000



CAD CONTROL
DRAWING



VEKTEK, INC.
1334 E. SIXTH AVE. P.O. BOX 625
EMPORIA, KS. 66801 U.S.A.

A	650	RELEASE	K. ROEMER	04-20-05	15410801	M	CLAMP, RETR, SA, 1700
REV	IN ACCORDANCE WITH ECN	EFFECTIVE DATE	REVISED BY	DATE	REFERENCE MODEL	REF REV	RETRACT
DRW BY:	DRAWING STATUS: Released				TOLERANCES DO NOT APPLY		SIZE
DATE:	PRODUCTION APPROVED FOR RELEASED STATUS ONLY				DIMENSIONS ARE NOMINAL		D ILC15410801 REV A

SIZE	D	ILC15410801	REV	A
------	---	-------------	-----	---

FORM FEG036, Rev. A