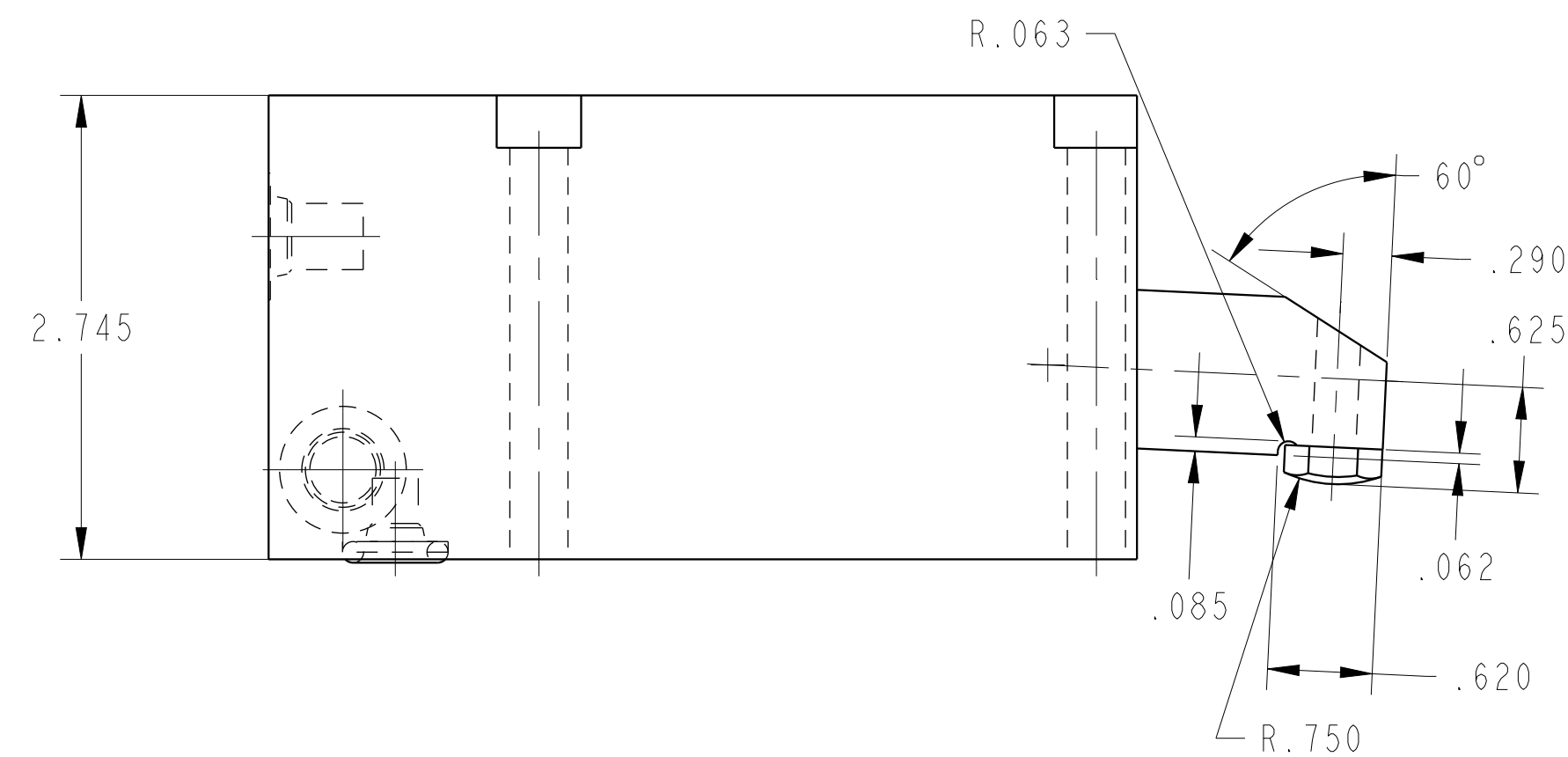
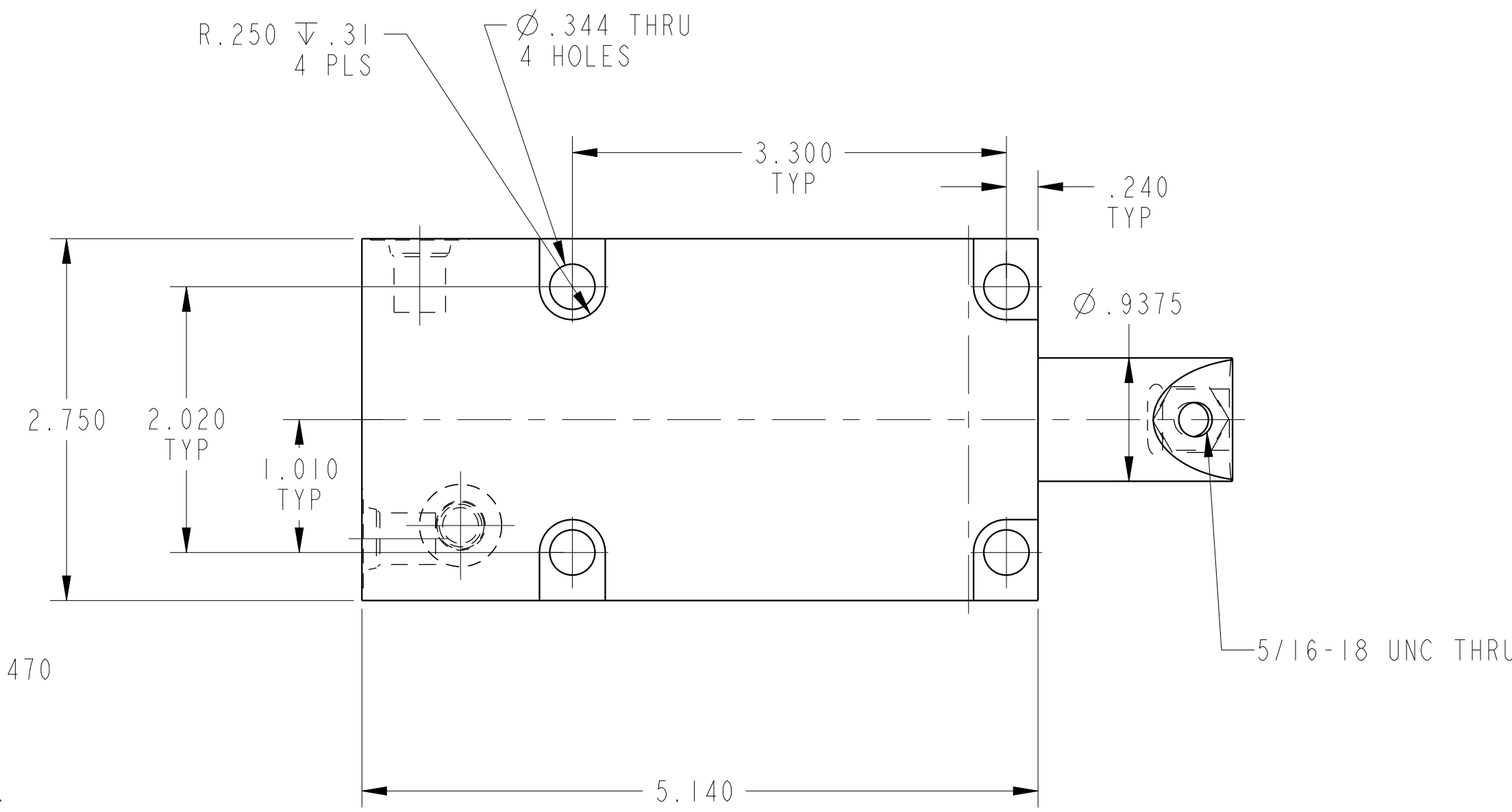
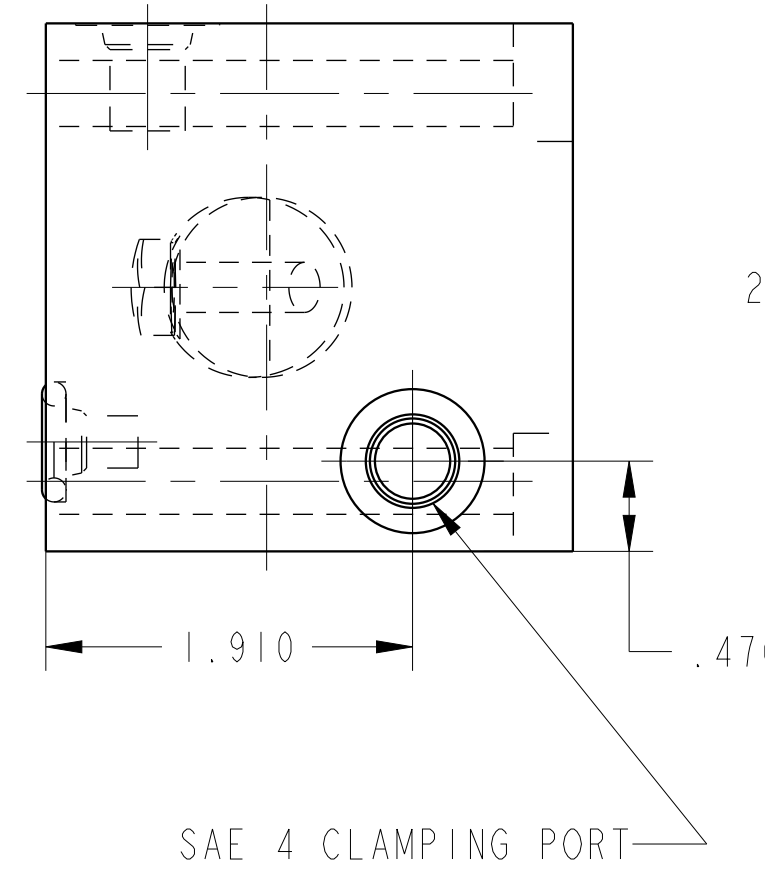
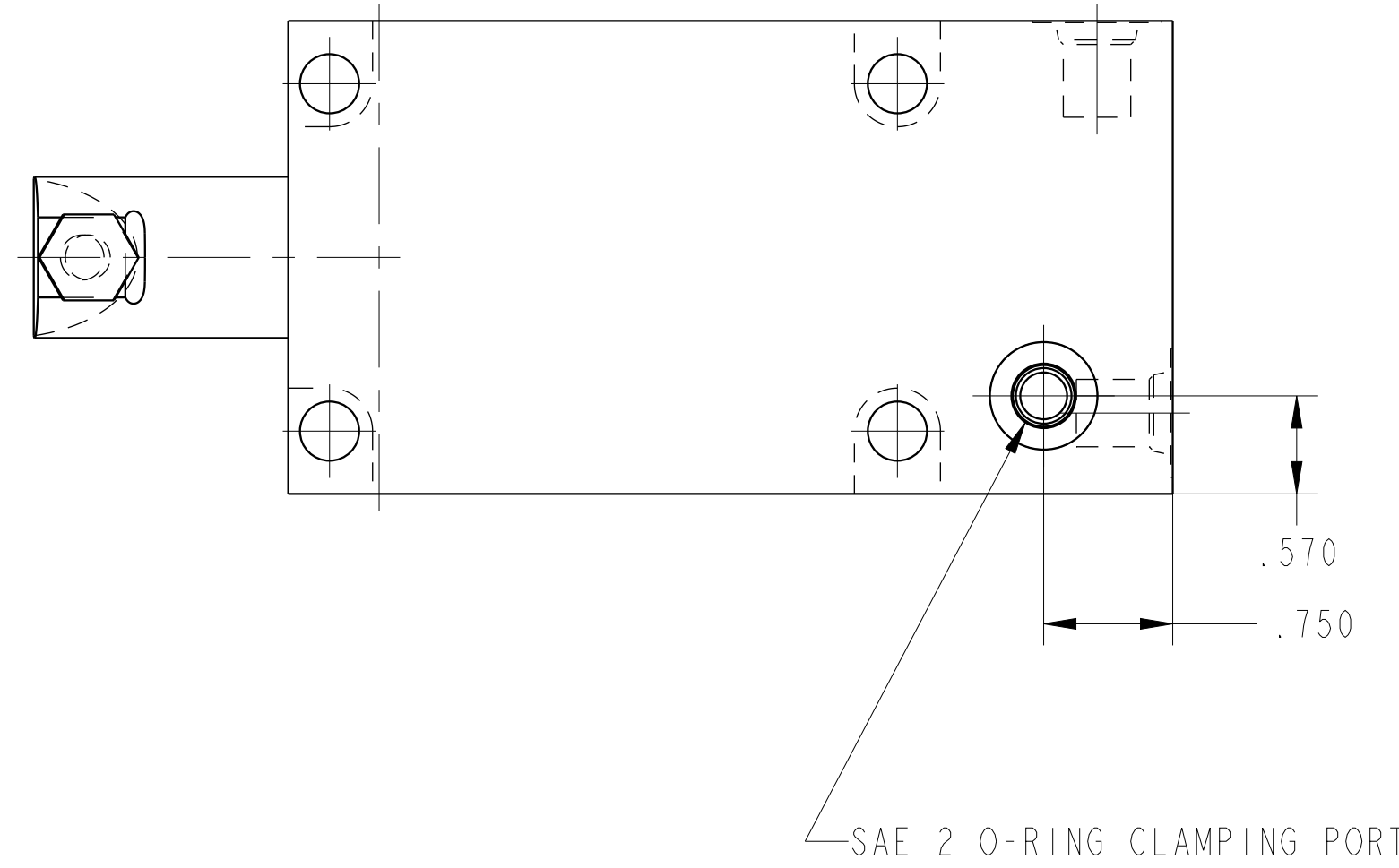
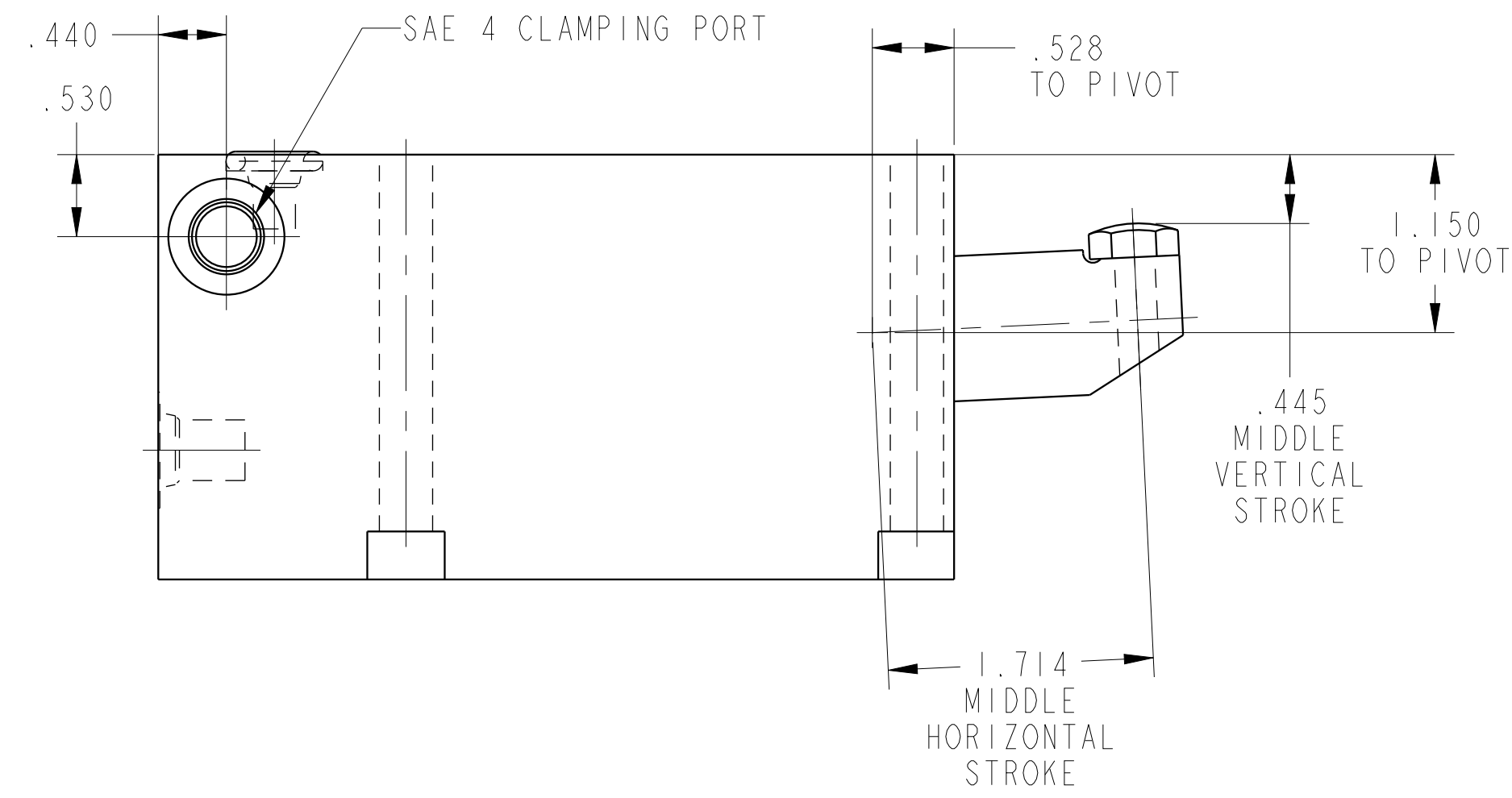
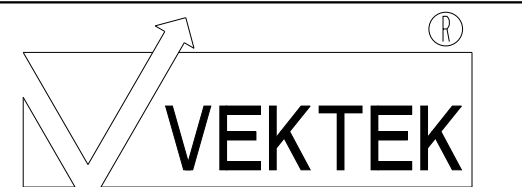


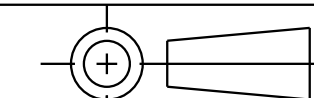
ILC15410803 REV B ECN 5145
SCALE 1.000



CAD CONTROL
DRAWING



VEKTEK, INC.
1334 E. SIXTH AVE. P.O. BOX 625
EMPORIA, KS. 66801 U.S.A.



| | | | | |
|---------|------------------------|--|------------|----------|
| B | 5145 | RELEASE | JDW | 08/31/23 |
| REV | IN ACCORDANCE WITH ECN | EFFECTIVE DATE | REVISED BY | DATE |
| DRW BY: | K. ROEMER | DRAWING STATUS: Released | | |
| DATE: | 04-10-02 | PRODUCTION APPROVED FOR RELEASED STATUS ONLY | | |

| | |
|---|---------|
| 15410803 | V |
| REFERENCE MODEL | REF REV |
| TOLERANCES DO NOT APPLY DIMENSIONS ARE NOMINAL | |

| |
|-----------------------|
| CLAMP, RETR, SA, 3300 |
| RETRACT |
| SIZE D |
| ILC15410803 |
| REV B |