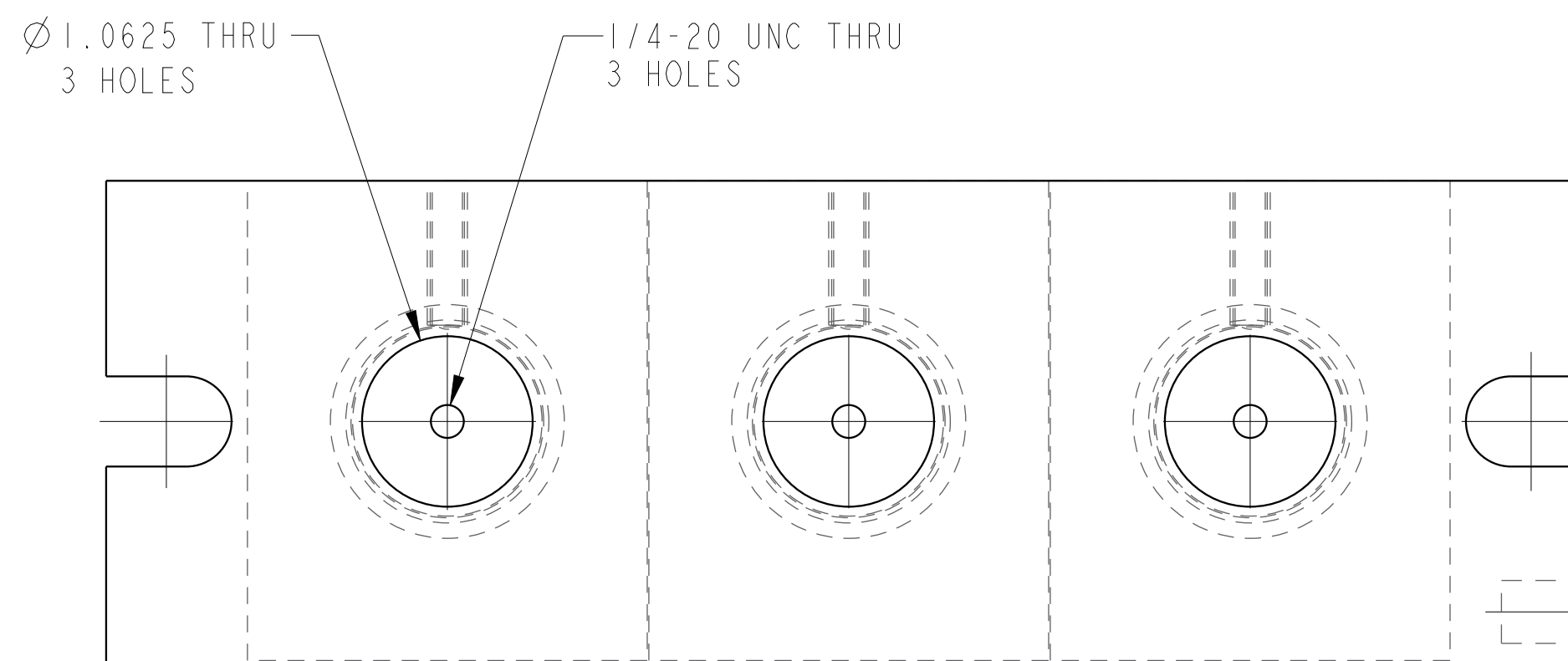
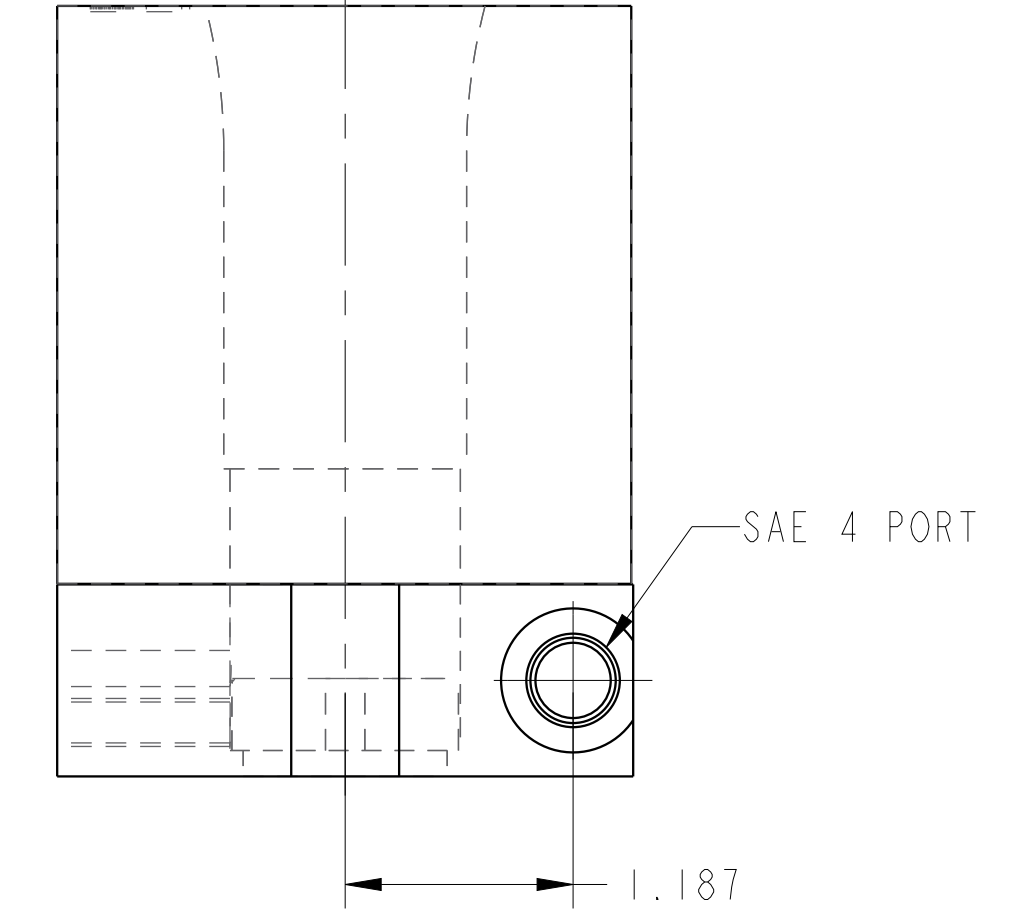
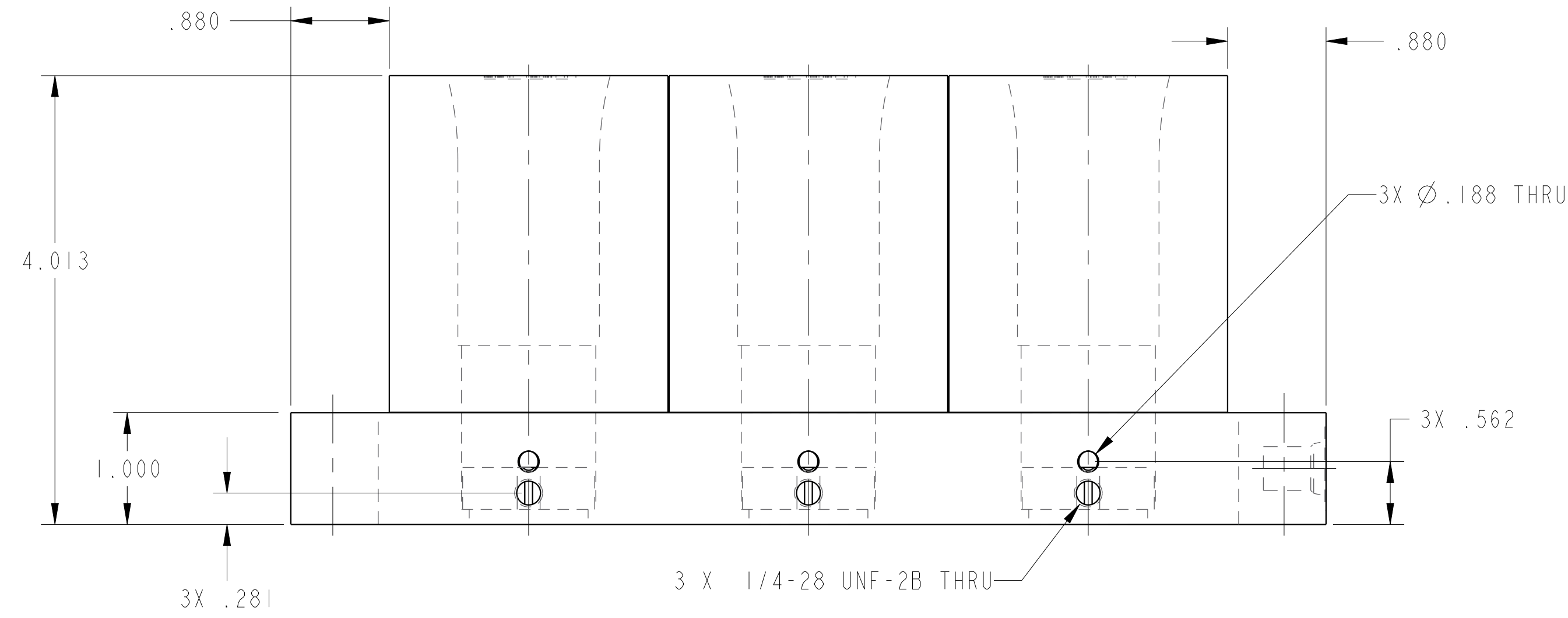
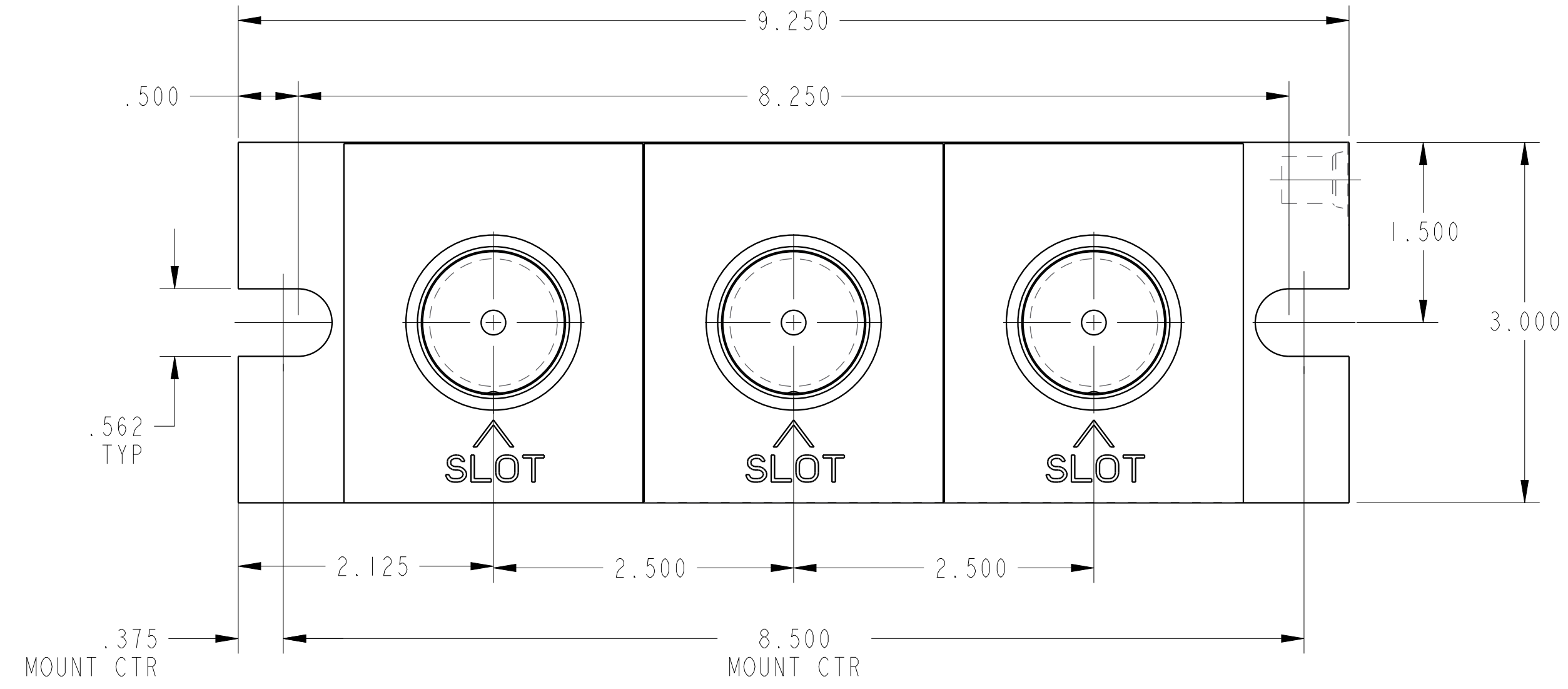
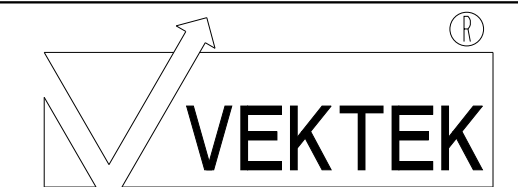


ILC15511903 REV B ECN 5090

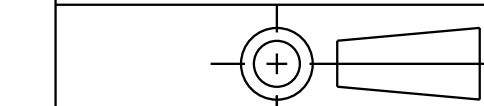


CAD CONTROL DRAWING



VEKTEK, INC.
1334 E. SIXTH AVE. P.O. BOX 625
EMPORIA, KS. 66801 U.S.A.

B	5090	RELEASE	RLK	5/3/23
REV	IN ACCORDANCE WITH ECN	EFFECTIVE DATE	REVISED BY	DATE
DRW BY:	K. ROEMER			
DATE:	04/11/02			
DRAWING STATUS: Released				
PRODUCTION APPROVED FOR RELEASED STATUS ONLY				



15511903	N
REFERENCE MODEL	REF REV

TOLERANCES DO NOT APPLY
DIMENSIONS ARE NOMINAL

WISE, COLLET, TPL
SIZE D
ILC15511903
REV B