

1

2

3

4

D

D

C

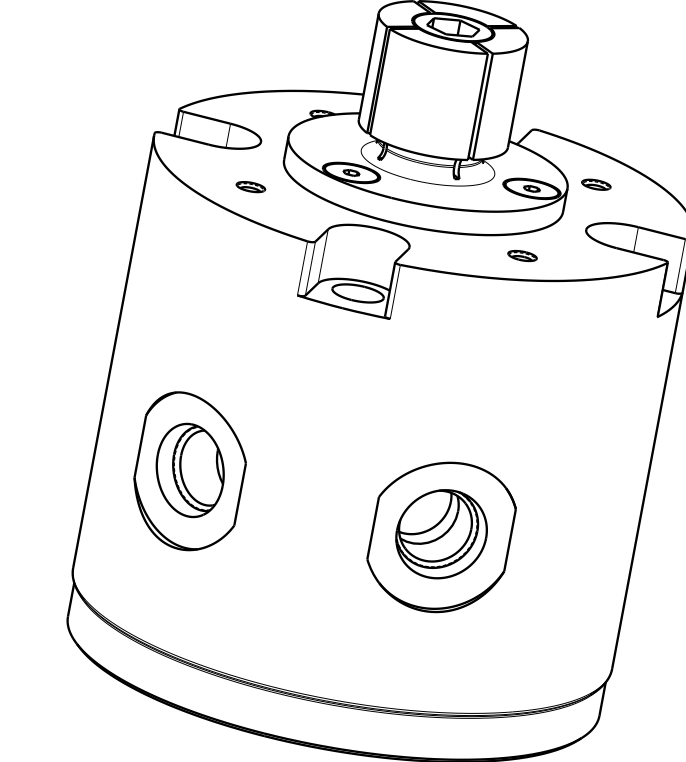
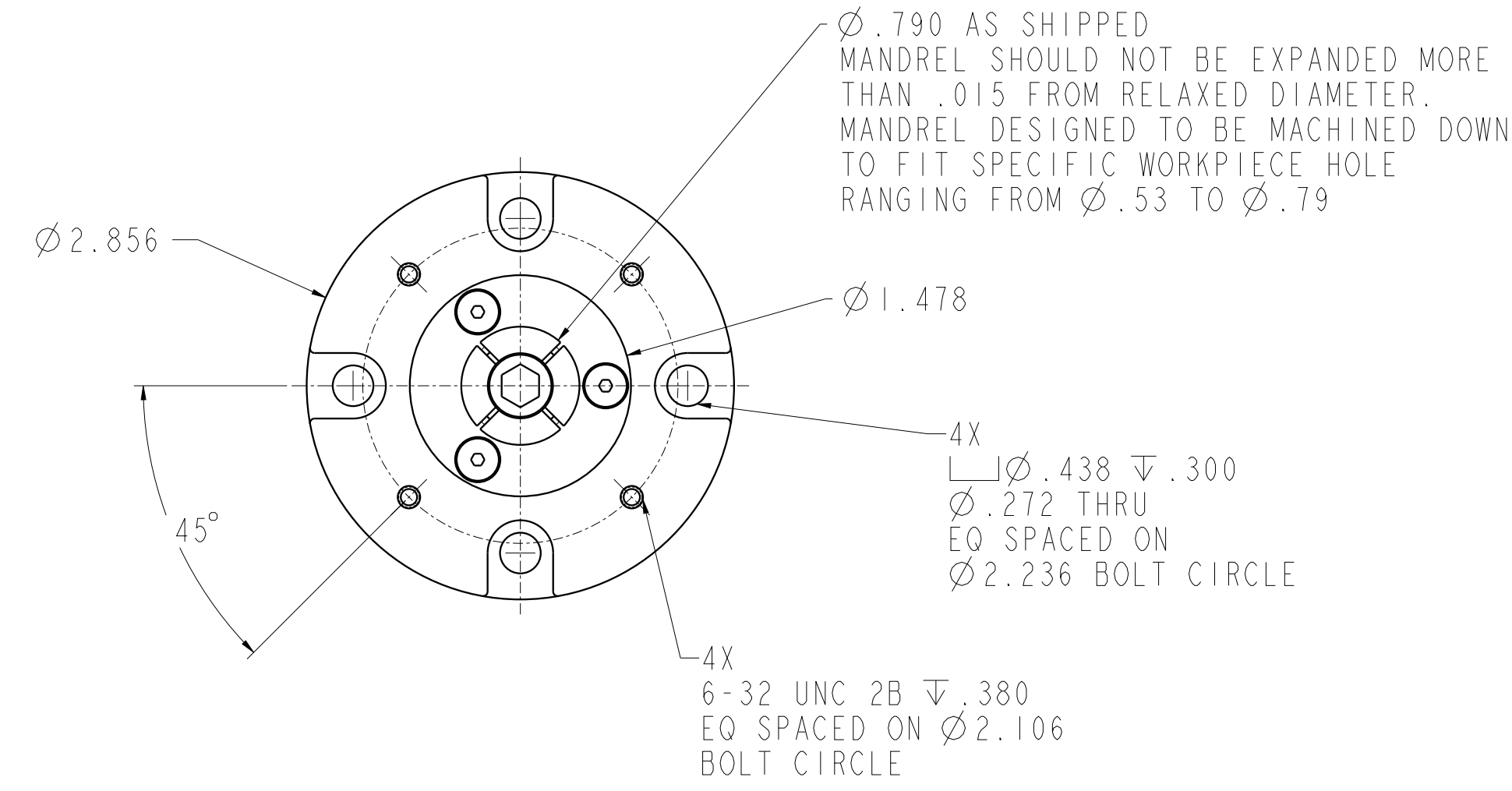
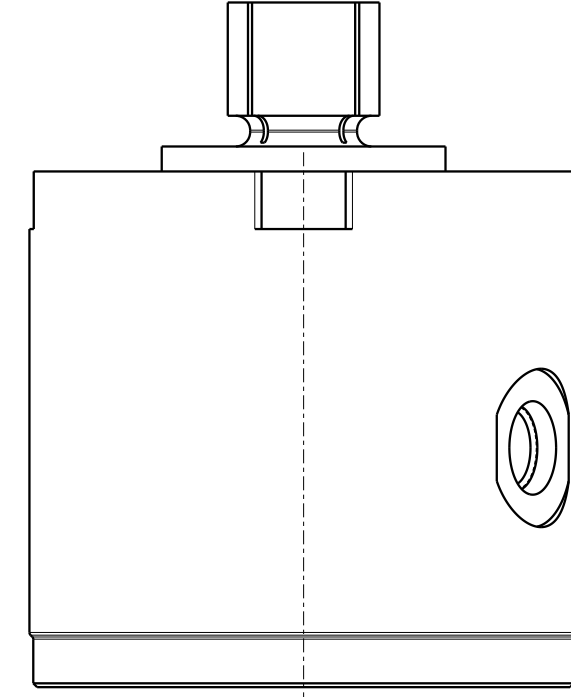
C

B

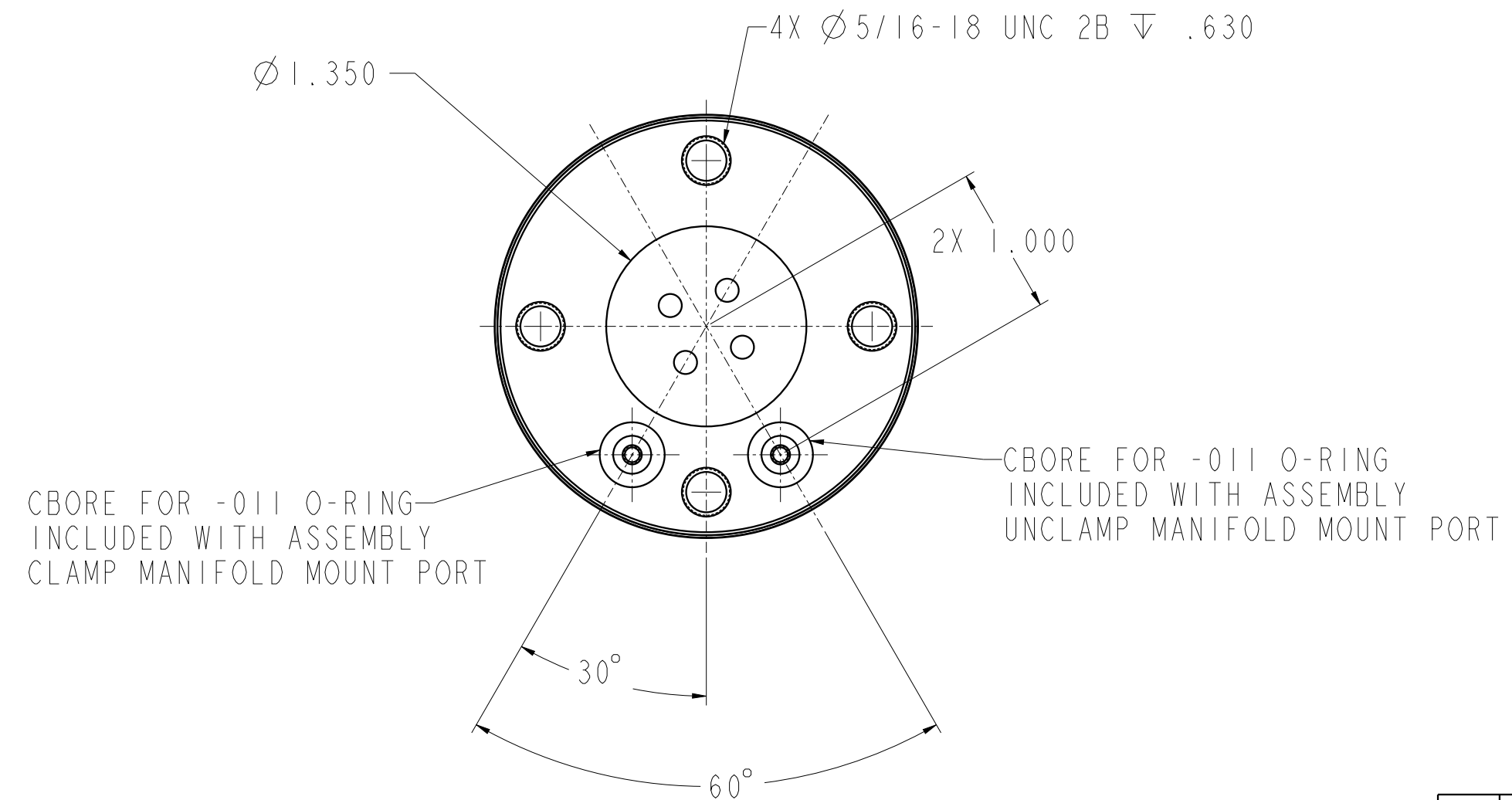
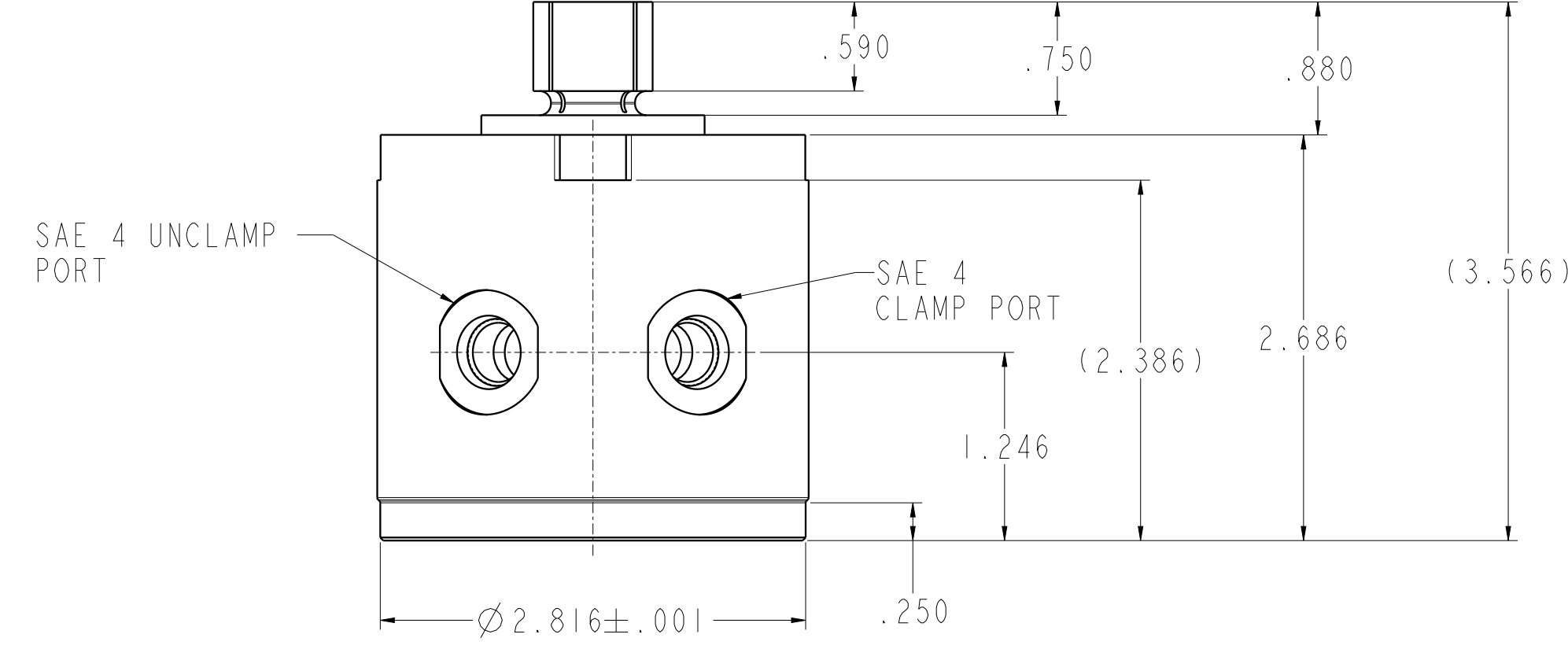
B

A

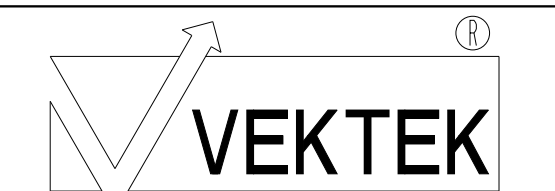
A



ILC15521001 REV A ECN 4221

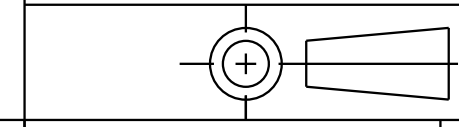


CAD CONTROL DRAWING



VEKTEK, INC.
 1334 E. SIXTH AVE. P.O. BOX 625
 EMPORIA, KS. 66801 U.S.A.

A	4221	RELEASE	ALS	8/26/22
REV	IN ACCORDANCE WITH ECN	EFFECTIVE DATE	REVISED BY	DATE
DRW BY:	DLG	DRAWING STATUS: Released		
DATE:	05/15/2020	PRODUCTION APPROVED FOR RELEASED STATUS ONLY		



15521001	A
REFERENCE MODEL	REF REV
TOLERANCES DO NOT APPLY DIMENSIONS ARE NOMINAL	

CLAMP, ID, EXPANSTION, 2950, #2
5/16-18 PISTON TREAD
SIZE D
ILC15521001 REV A

1

2

3

4

SHEET 1 OF 1