

1

2

3

4

D

D

C

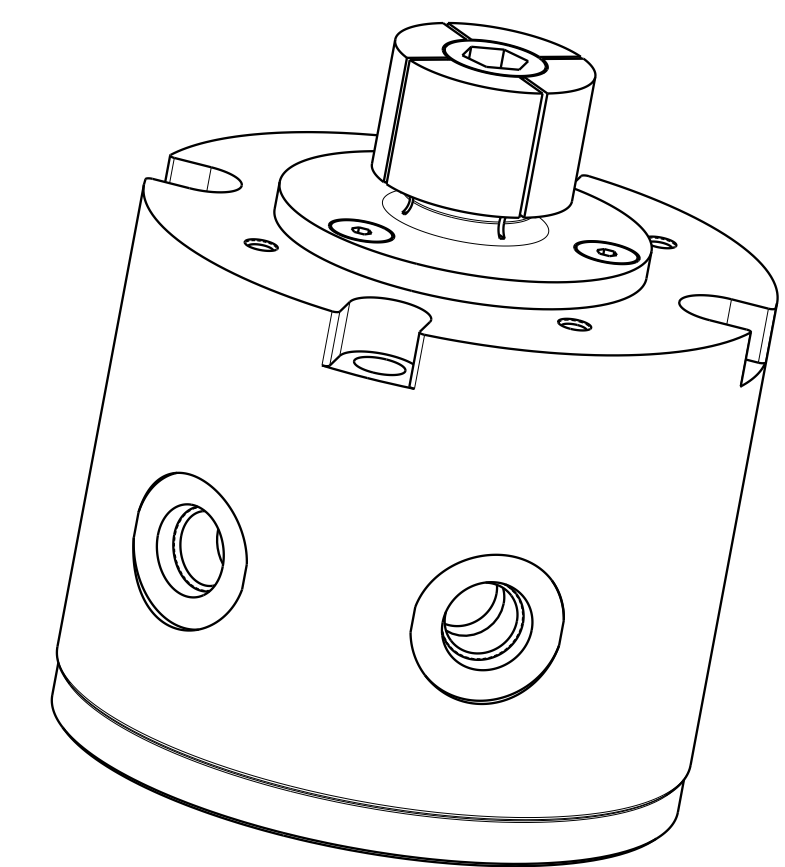
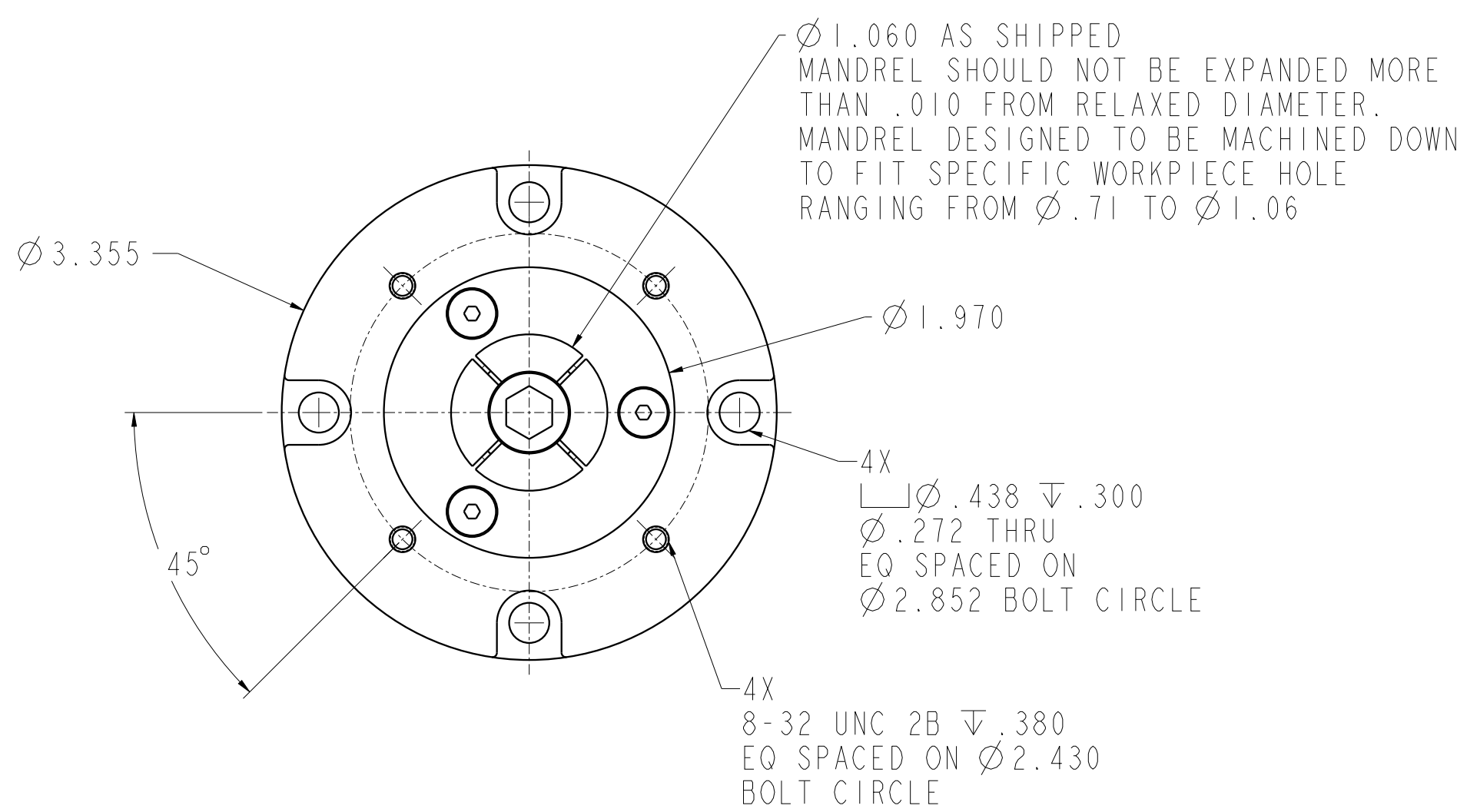
C

B

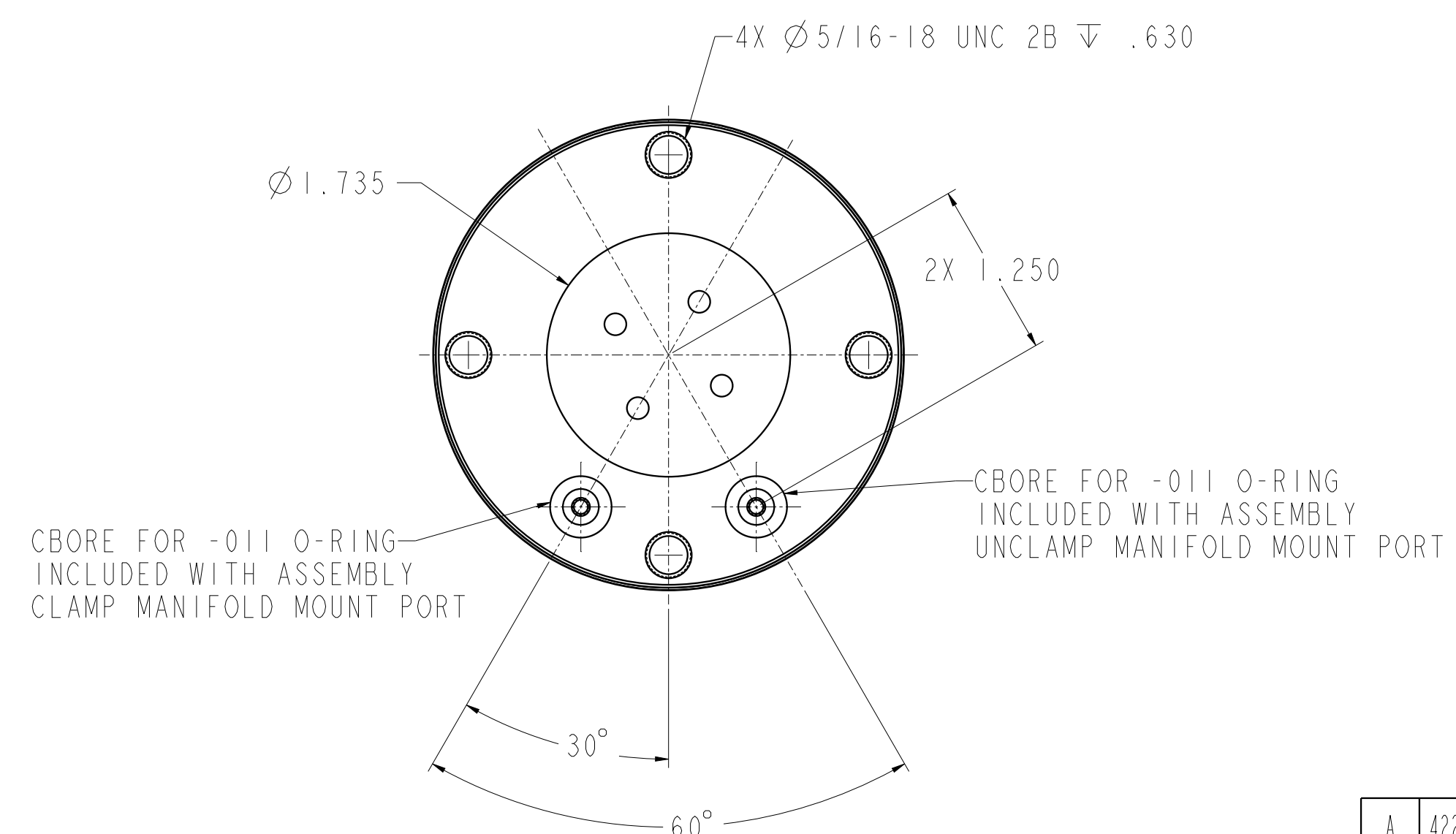
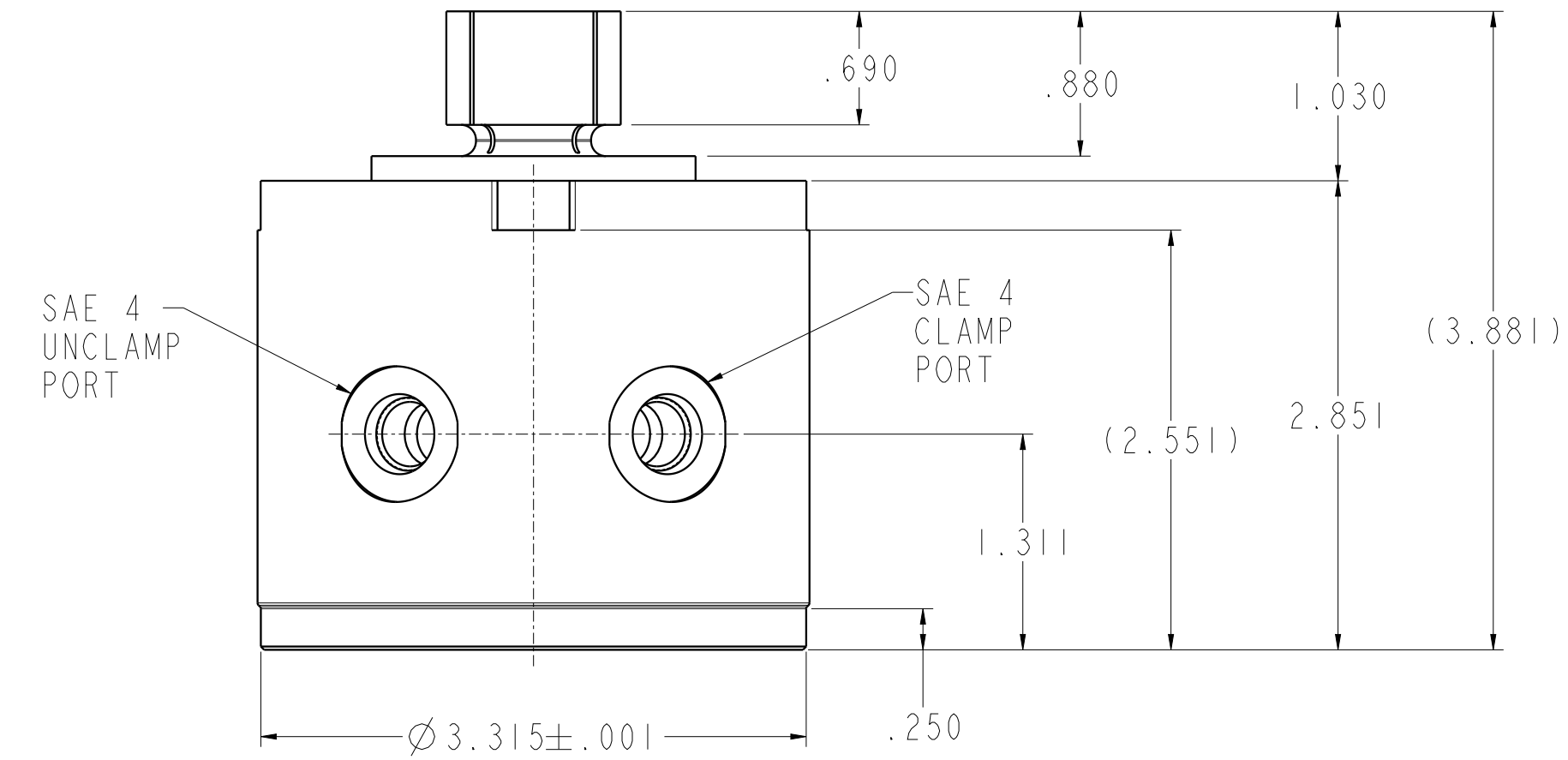
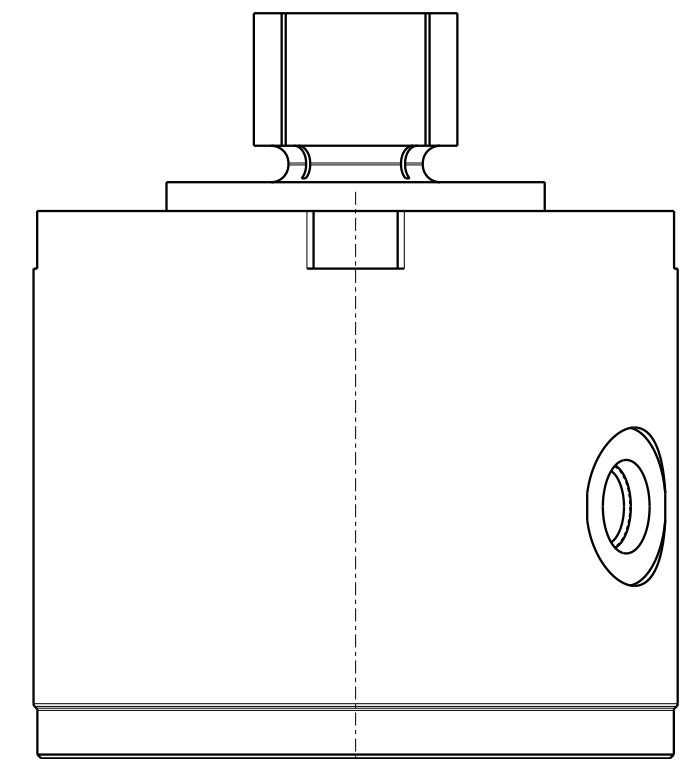
B

A

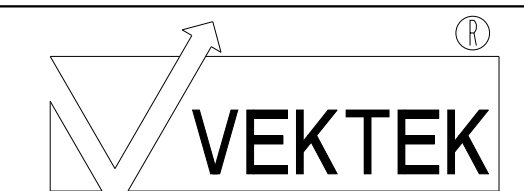
A



ILC15521400 REV A ECN 4221



CAD CONTROL DRAWING



VEKTEK, INC.  
 1334 E. SIXTH AVE. P.O. BOX 625  
 EMPORIA, KS. 66801 U.S.A.

A	4221	RELEASE	ALS	8/26/22	15521400	A	CLAMP, 1D, EXPANSTON, 5200, #3
REV	IN ACCORDANCE WITH ECN	EFFECTIVE DATE	REVISED BY	DATE	REFERENCE MODEL	REF REV	3/8-16 PISTON THREAD
DRW BY:	DLG	DRAWING STATUS: Released			TOLERANCES DO NOT APPLY		SIZE D
DATE:	05/15/2020	PRODUCTION APPROVED FOR RELEASED STATUS ONLY			DIMENSIONS ARE NOMINAL		ILC15521400 REV A

1

2

3

4

SHEET 1 OF 1