

1

2

3

4

D

D

C

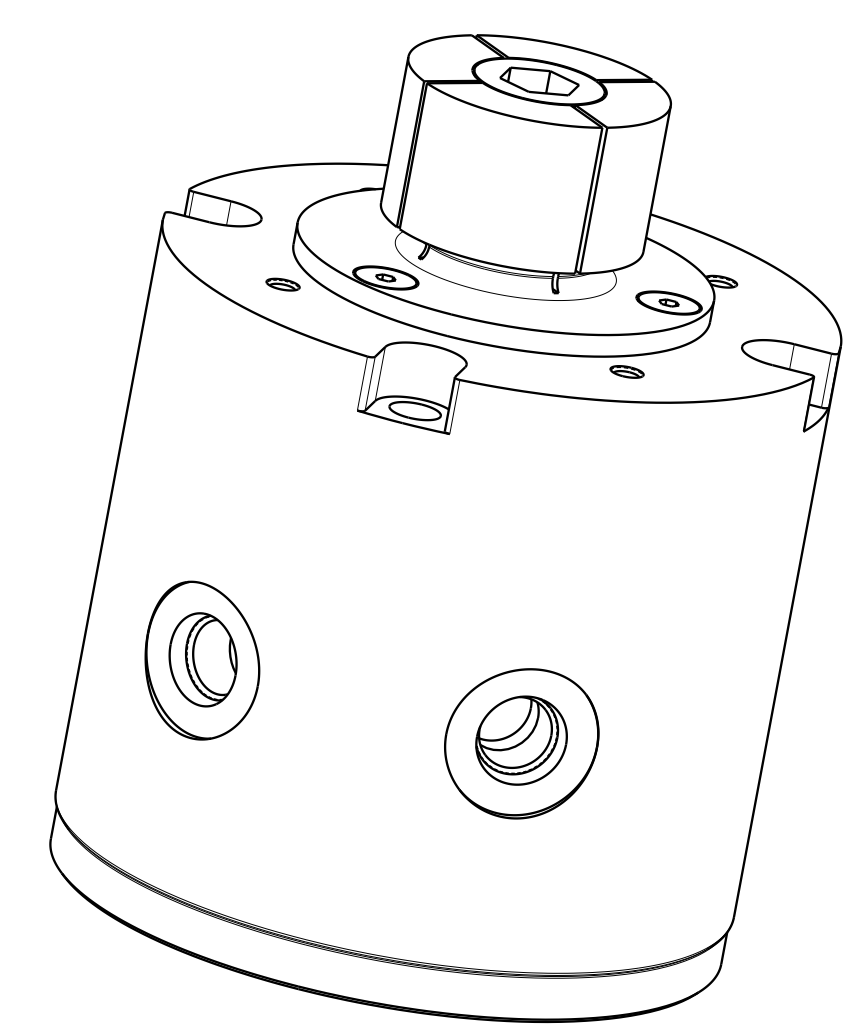
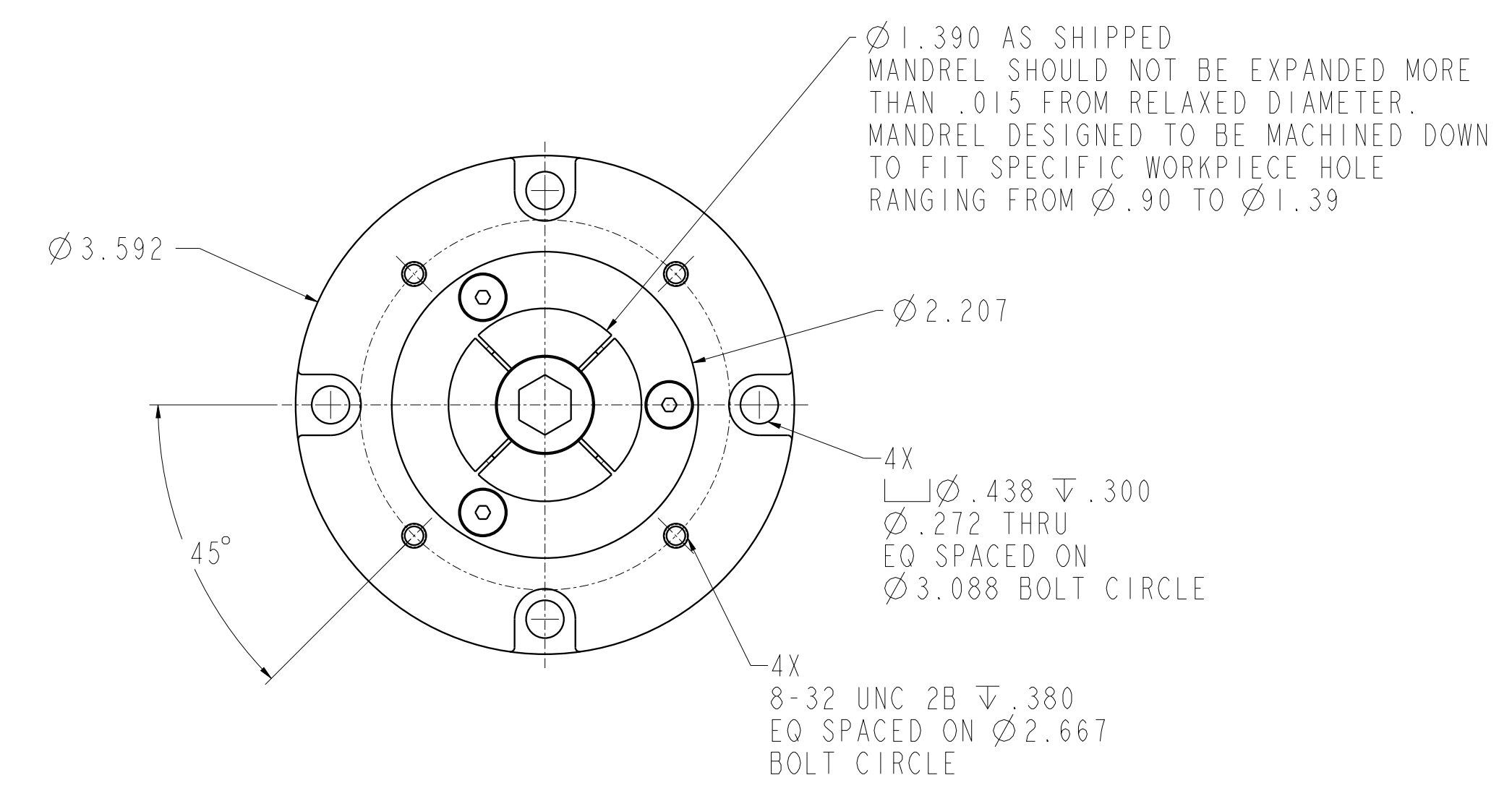
C

B

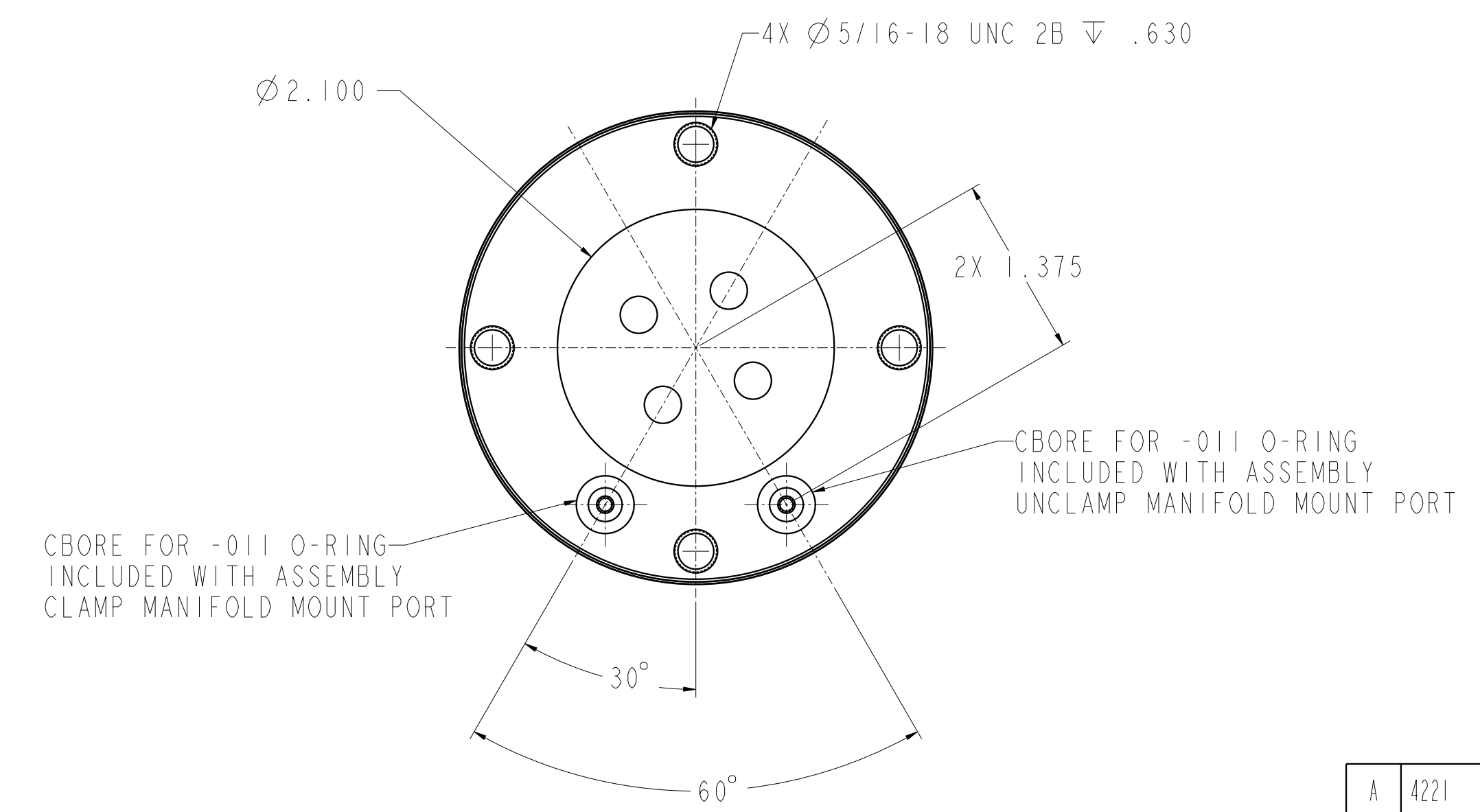
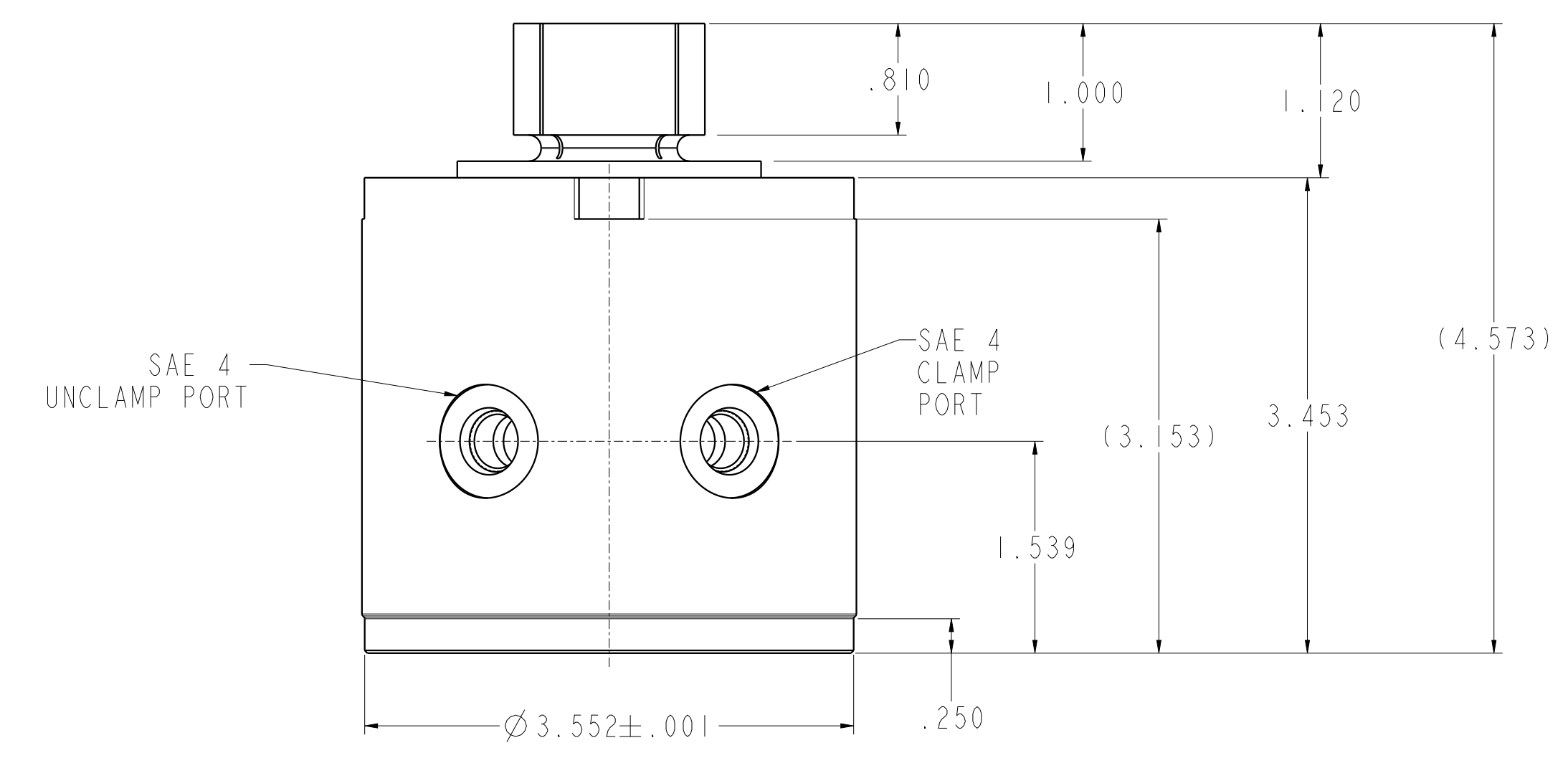
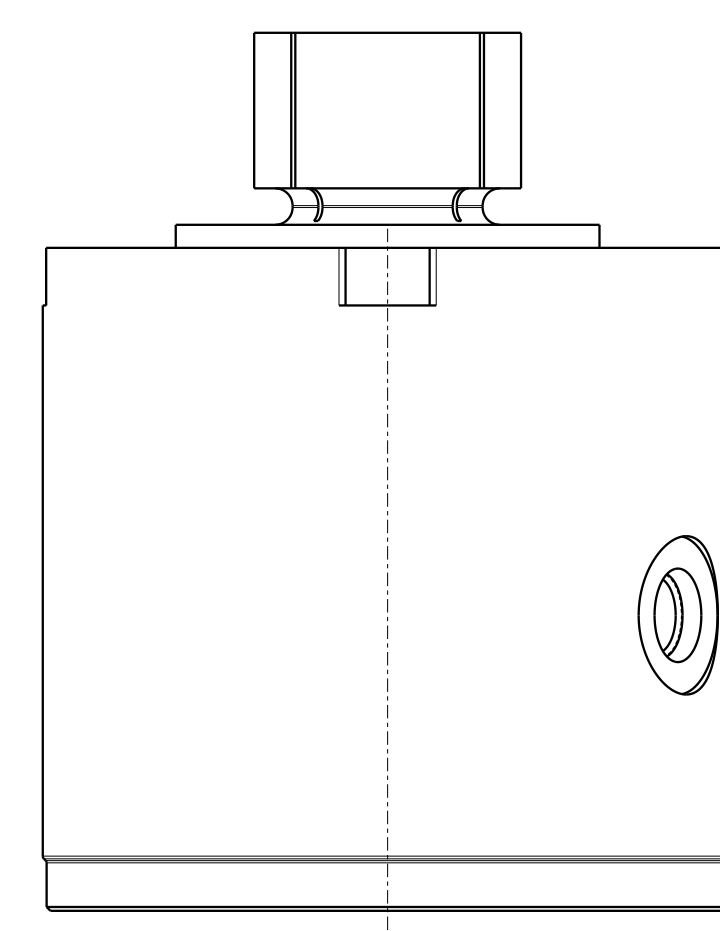
B

A

A



ILC15521700 REV A ECN 4221



CAD CONTROL DRAWING		
	VEKTEK, INC. 1334 E. SIXTH AVE. P.O. BOX 625 EMPORIA, KS. 66801 U.S.A.	

A	4221	RELEASE	ALS	8/26/22	15521700	A	CLAMP, ID, EXPANSION, 9000, #4
REV	IN ACCORDANCE WITH ECN	EFFECTIVE DATE	REVISED BY	DATE	REFERENCE MODEL	REF REV	1/2-13 PISTON THREAD
DRW BY:	DLG	DRAWING STATUS: Released			TOLERANCES DO NOT APPLY		SIZE D
DATE:	05/15/2020	PRODUCTION APPROVED FOR RELEASED STATUS ONLY			DIMENSIONS ARE NOMINAL		ILC15521700 REV A