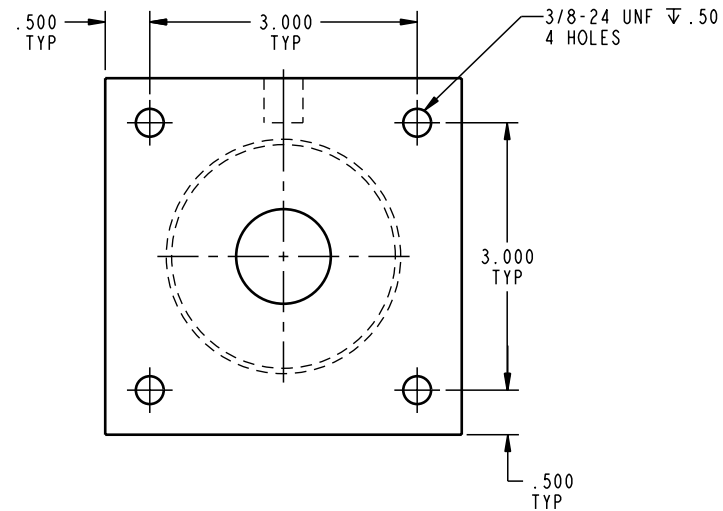
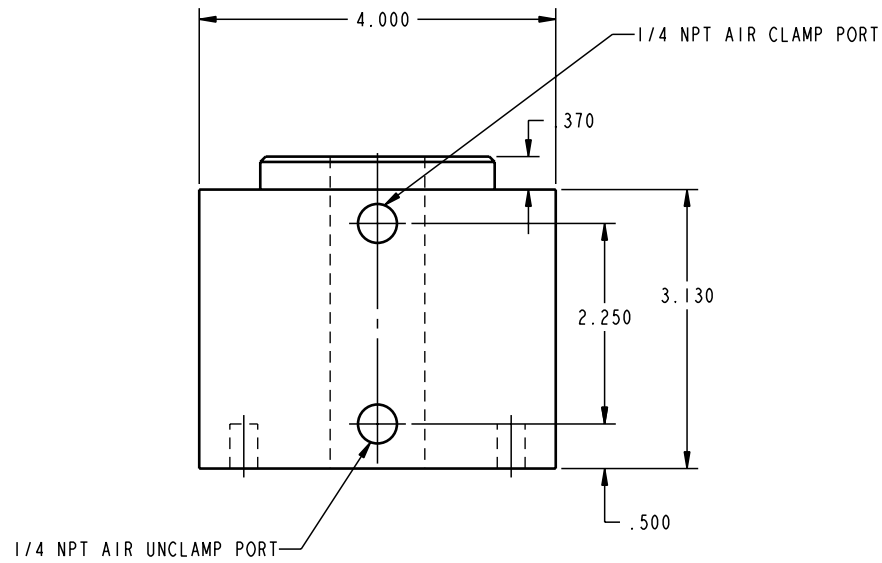
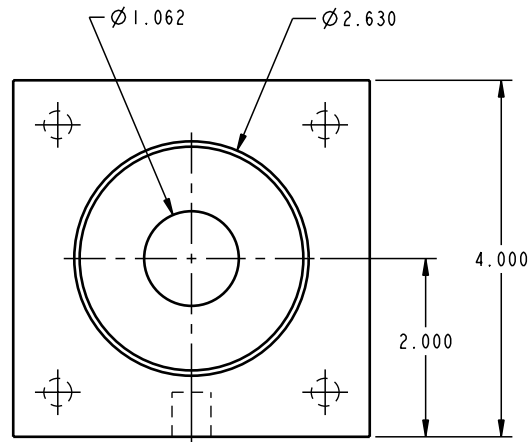


ILC15543500 REV A ECN 652



CAD CONTROL
DRAWING



VEKTEK, INC.
1334 E. SIXTH AVE. P.O. BOX 625
EMPORIA, KS. 66801 U.S.A.

A	652	RELEASE	K. ROEMER	04-21-05	15543500	C	WISE, COLLET, AIR, BASE MT
REV	IN ACCORDANCE WITH ECN	EFFECTIVE DATE	REVISED BY	DATE	REFERENCE MODEL	REF REV	
DRW BY:	K. ROEMER	DRAWING STATUS: Released			TOLERANCES DO NOT APPLY DIMENSIONS ARE NOMINAL		SIZE D
DATE:	08-09-02	PRODUCTION APPROVED FOR RELEASED STATUS ONLY					ILC15543500 REV A

FORM FEG036, Rev. A