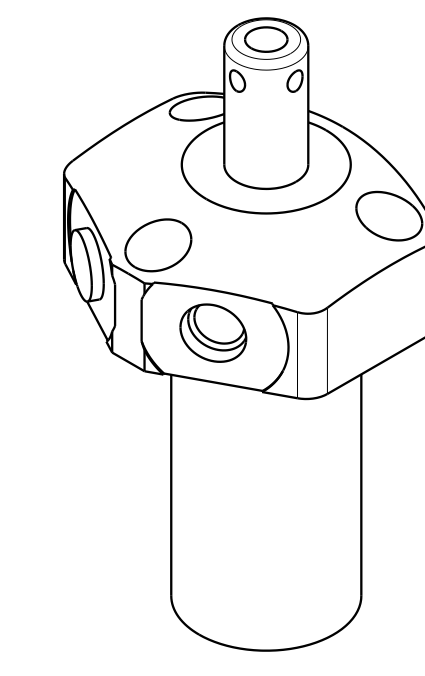
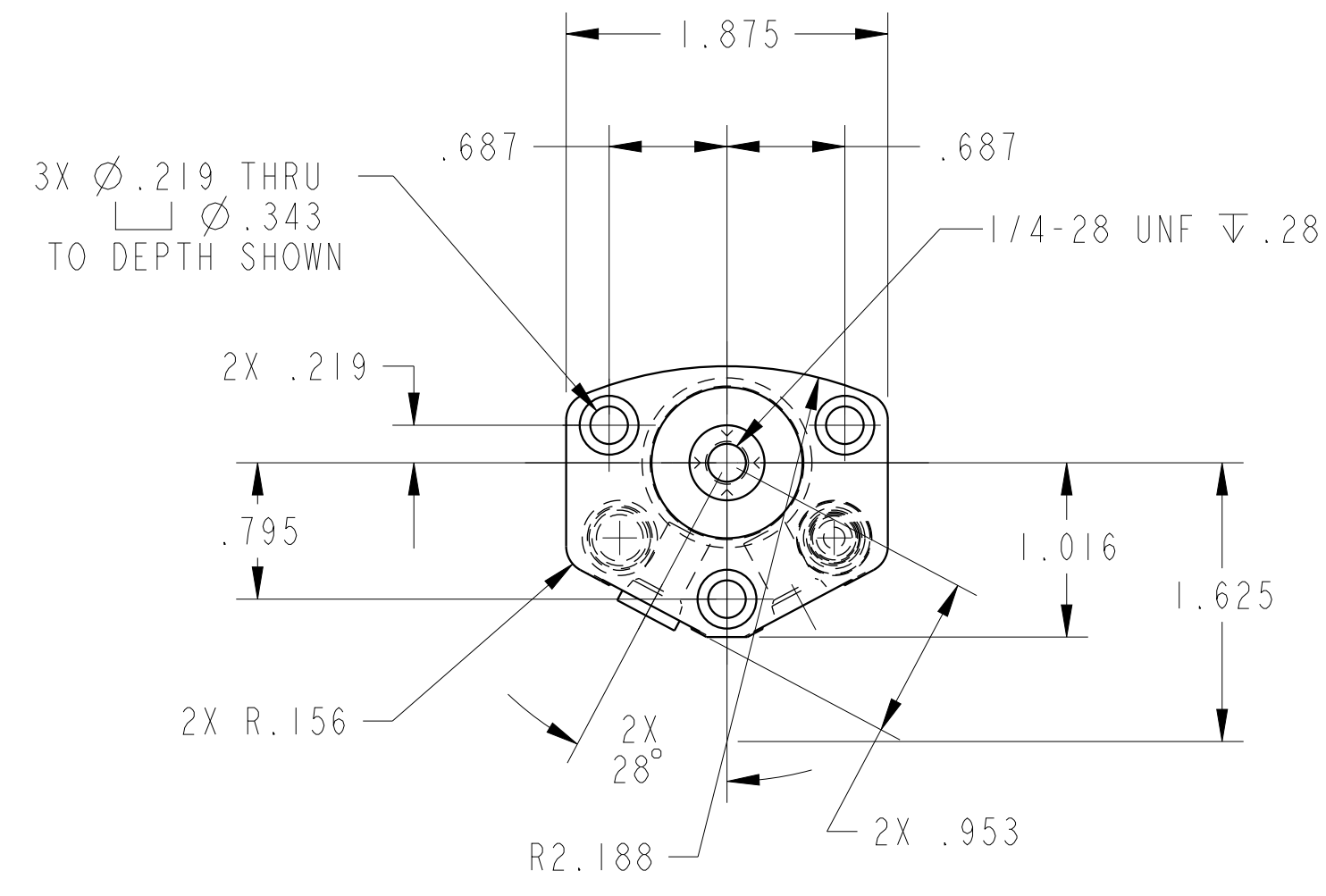


1

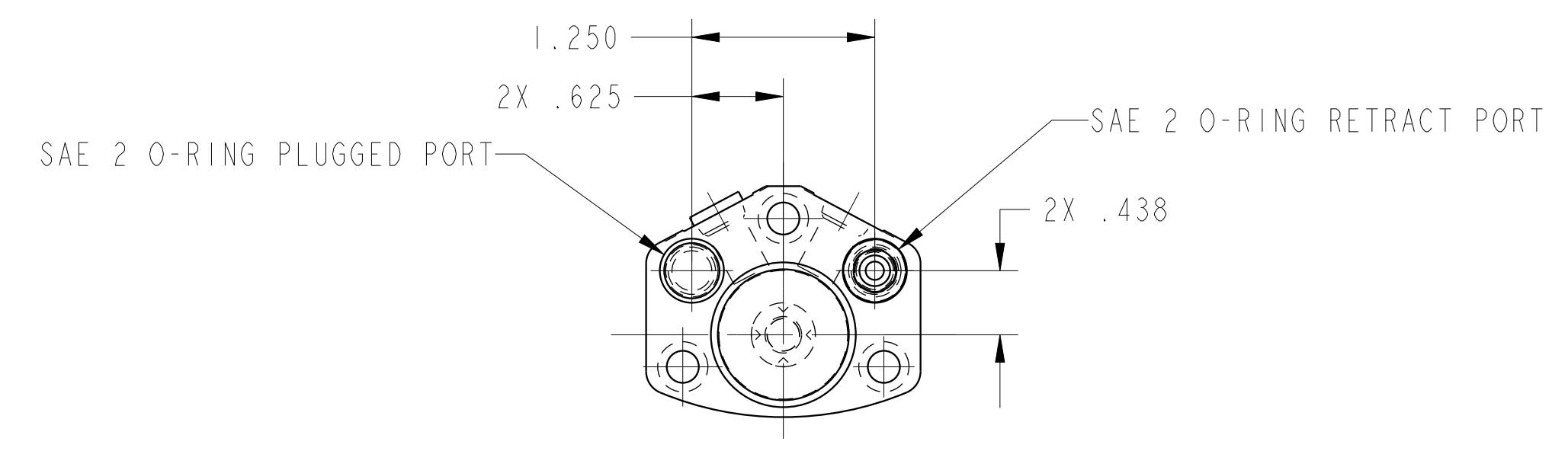
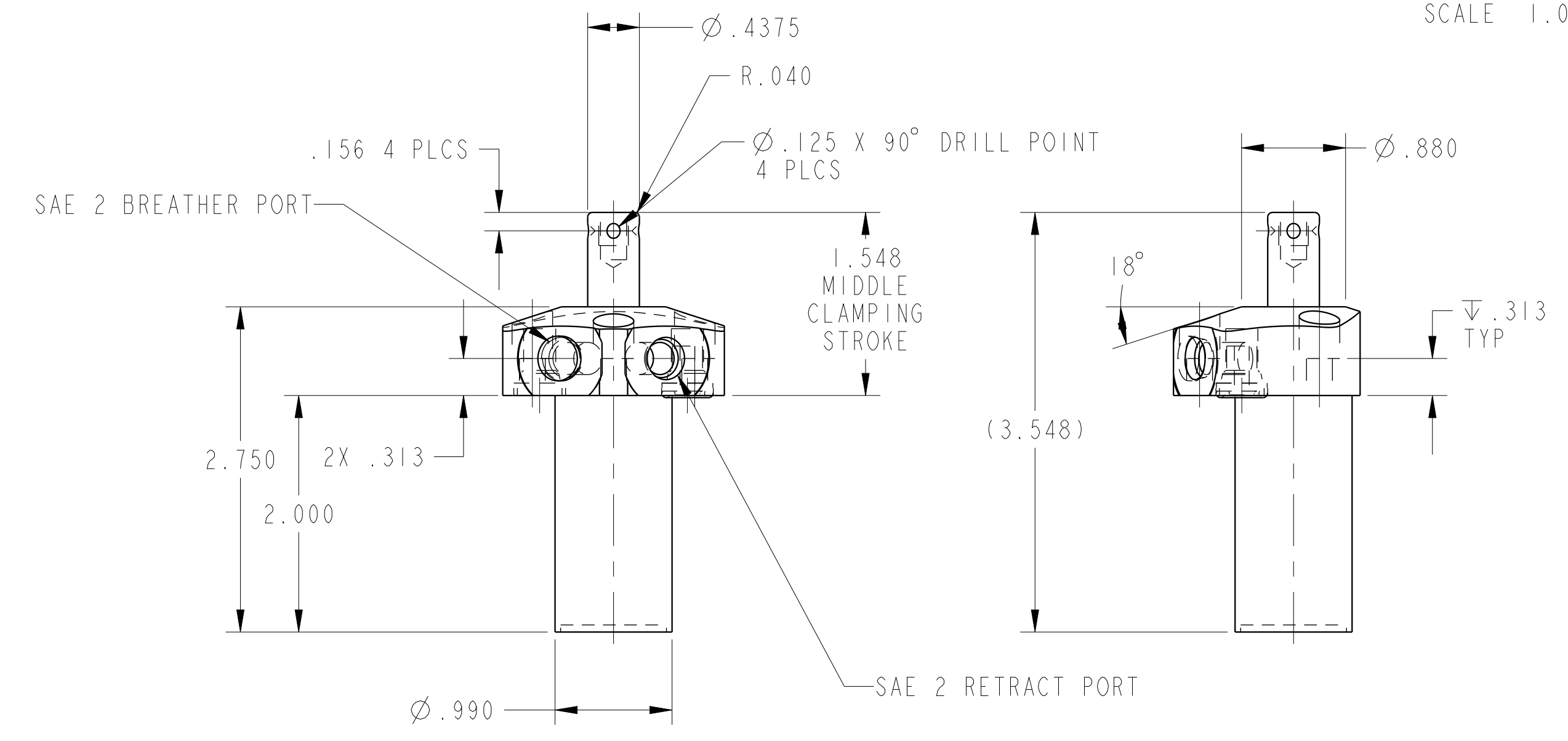
2

3

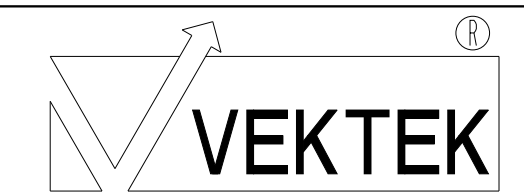
4



ILC15610500S REV A ECN 4609
SCALE 1.000



CAD CONTROL DRAWING



VEKTEK, INC.
1334 E. SIXTH AVE. P.O. BOX 625
EMPORIA, KS. 66801 U.S.A.

A	4609	RELEASE	RLK	1/21/22
REV	IN ACCORDANCE WITH ECN	EFFECTIVE DATE	REVISED BY	DATE
DRW BY: RLK		DRAWING STATUS: Released		
DATE: 1/21/22		PRODUCTION APPROVED FOR RELEASED STATUS ONLY		

15610500S	A
REFERENCE MODEL	REF REV
TOLERANCES DO NOT APPLY DIMENSIONS ARE NOMINAL	

SIZE	REV
D	A
ILC15610500S	

1

2

3

4