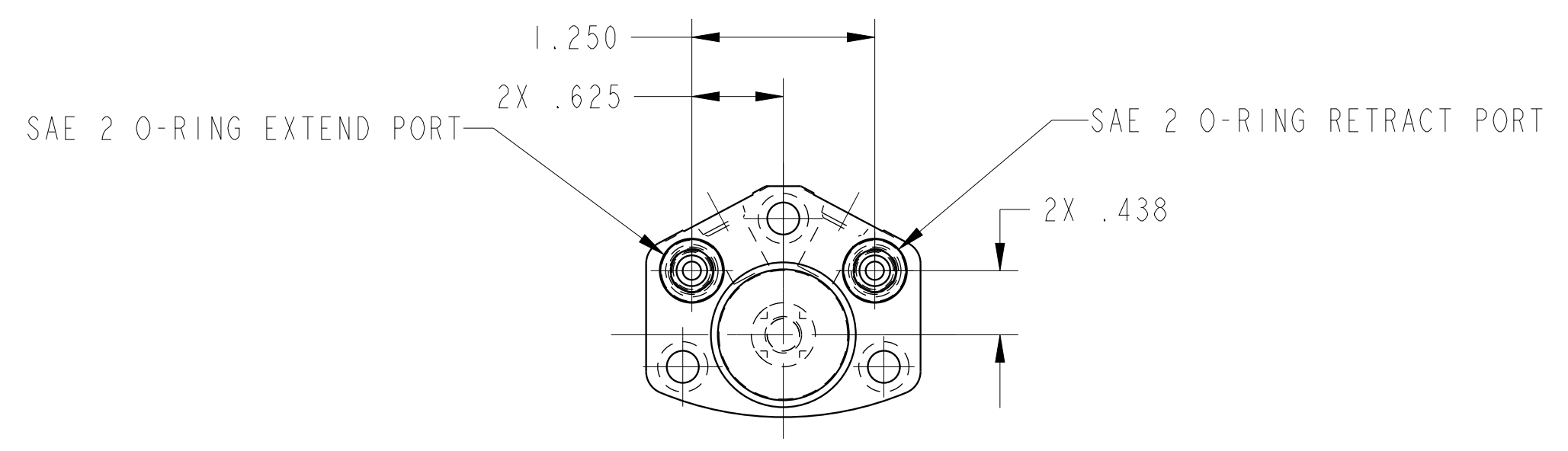
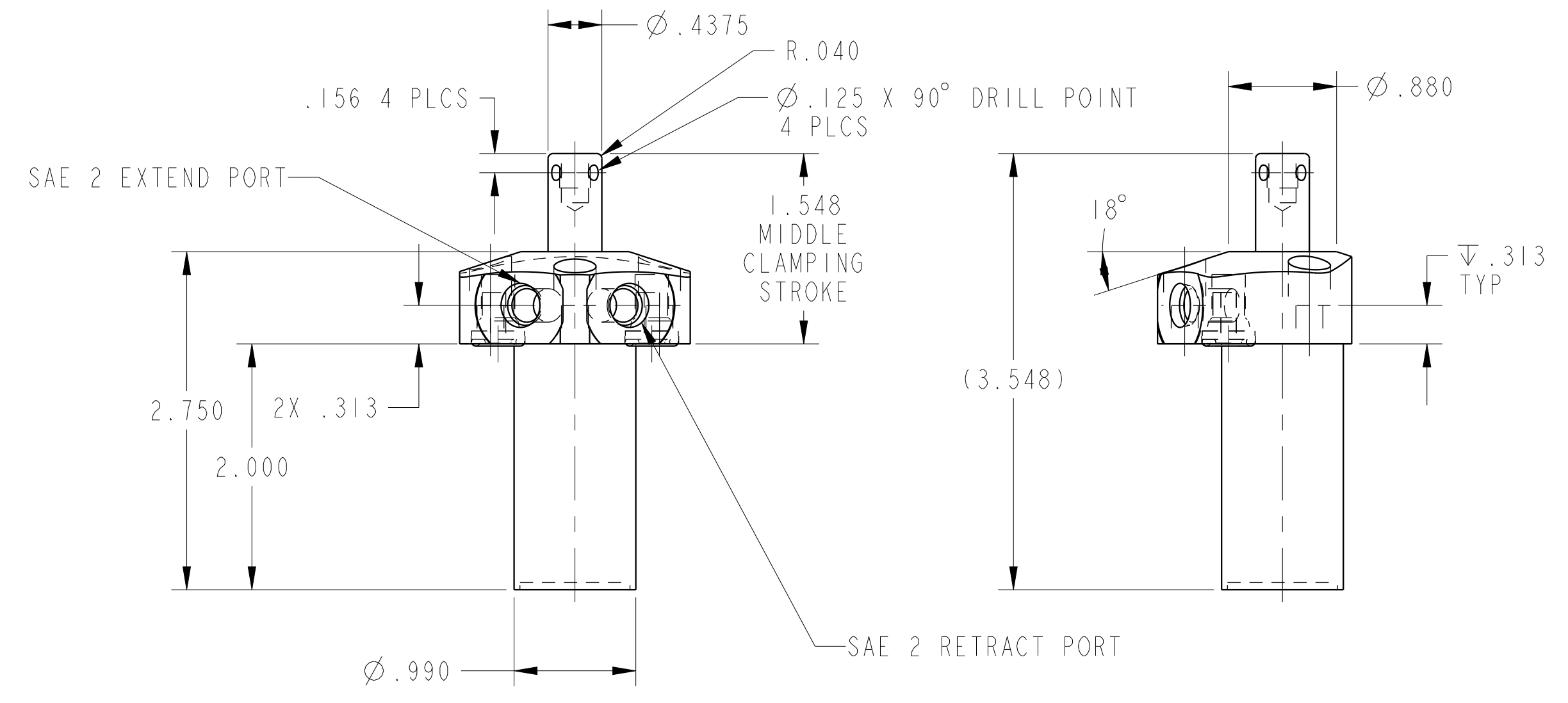


ILC15620500L REV A ECN 4609
SCALE 1.000



CAD CONTROL DRAWING			
		VEKTEK, INC. 1334 E. SIXTH AVE. P.O. BOX 625 EMPORIA, KS. 66801 U.S.A.	

A	4609	RELEASE	RLK	1/21/22	15260500L	A	SC, TF, 450, DA, LH
REV	IN ACCORDANCE WITH ECN	EFFECTIVE DATE	REVISED BY	DATE	REFERENCE MODEL	REF REV	
DRW BY: RLK		DRAWING STATUS: Released			TOLERANCES DO NOT APPLY		SIZE
DATE: 1/21/22		PRODUCTION APPROVED FOR RELEASED STATUS ONLY			DIMENSIONS ARE NOMINAL		D ILC15620500L REV A