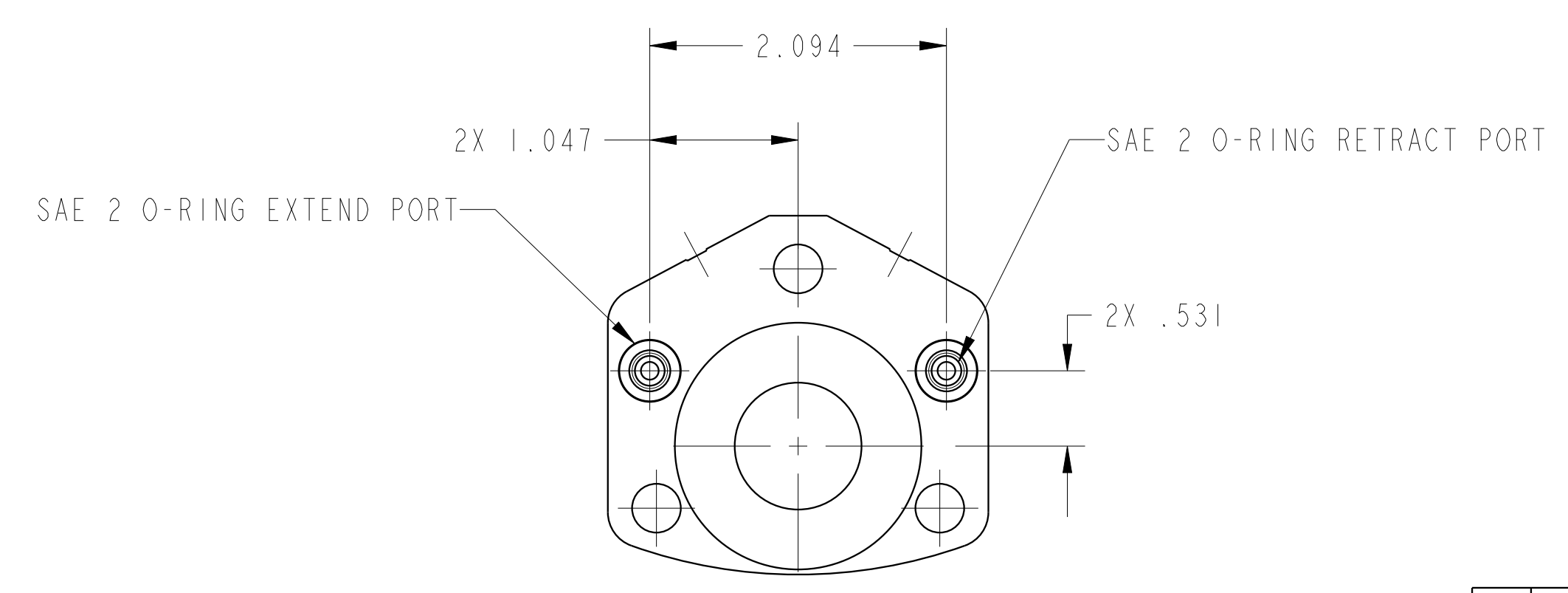
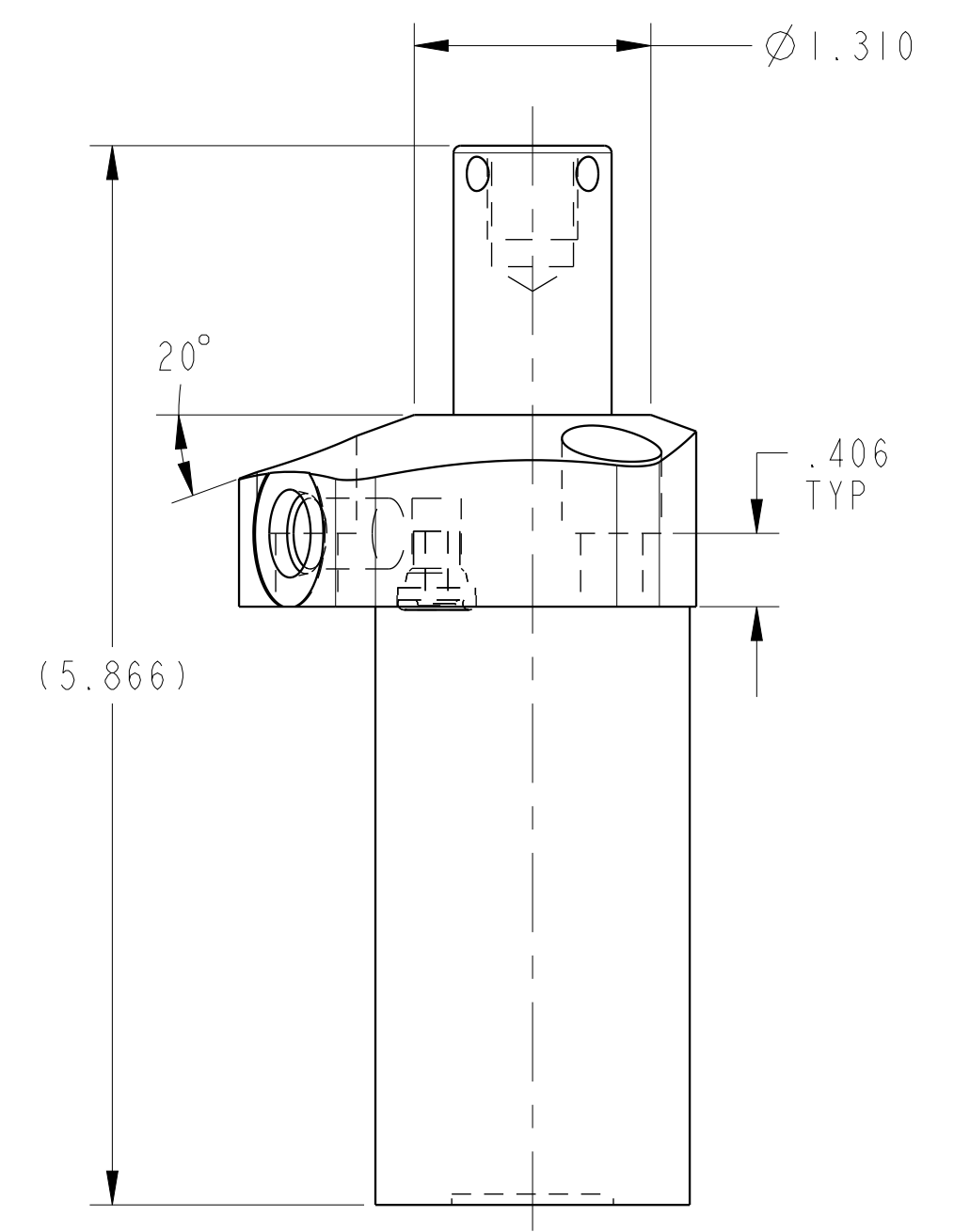
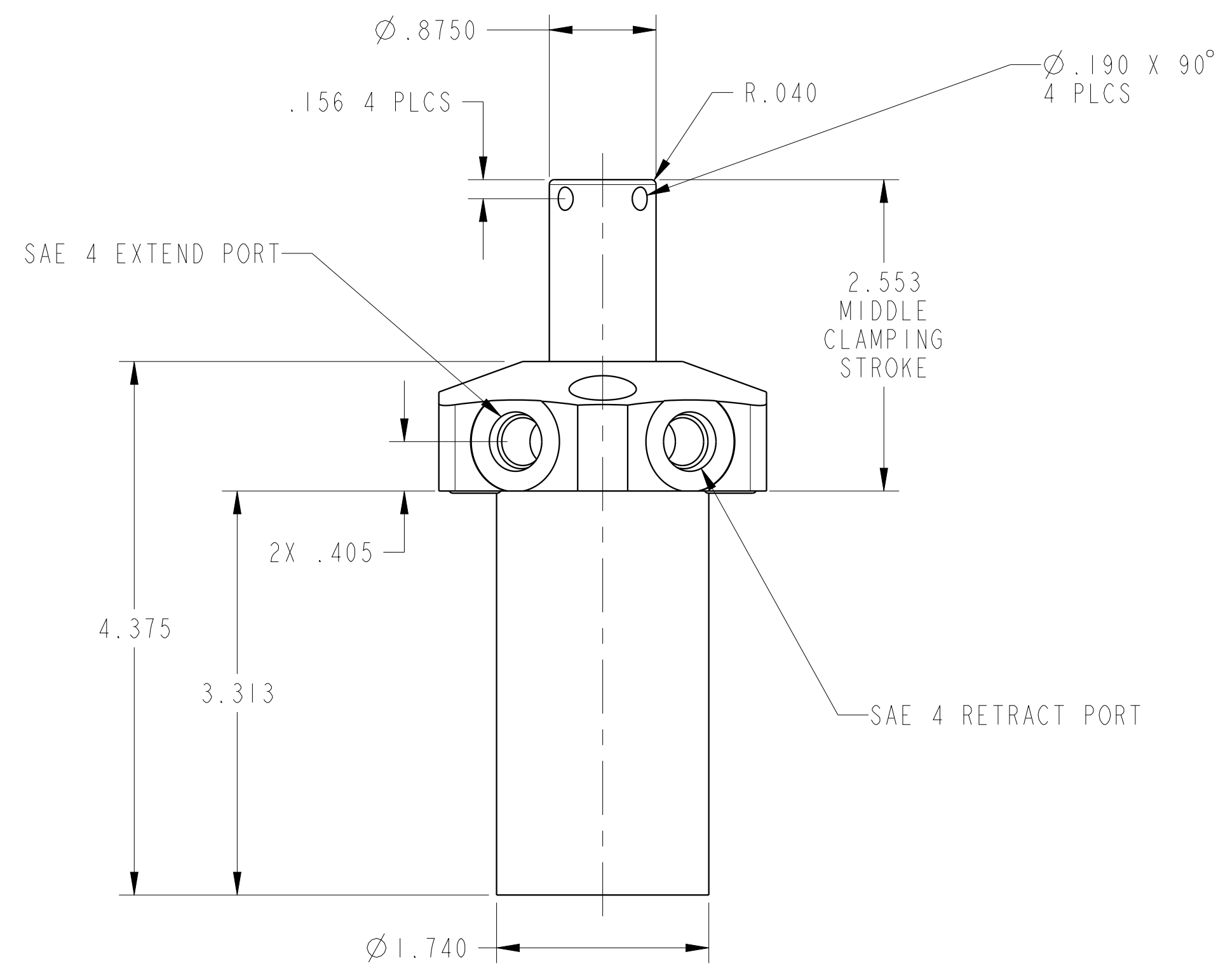

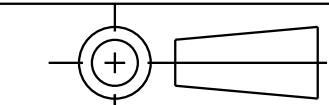


ILC15621300L REVA ECN4454



CAD CONTROL DRAWING	 VEKTEK, INC. 1334 E. SIXTH AVE. P.O. BOX 625 EMPORIA, KS. 66801 U.S.A.	
		

A	4454	RELEASE	ALS	5/25/21
REV	IN ACCORDANCE WITH ECN	EFFECTIVE DATE	REVISED BY	DATE
DRW BY:	ALS	DRAWING STATUS: Released		
DATE:	5/25/21	PRODUCTION APPROVED FOR RELEASED STATUS ONLY		

15621300L	A	SC, TF, 2600, DA, LH
REFERENCE MODEL	REF REV	
TOLERANCES DO NOT APPLY DIMENSIONS ARE NOMINAL		SIZE D
ILC15621300L		REV A