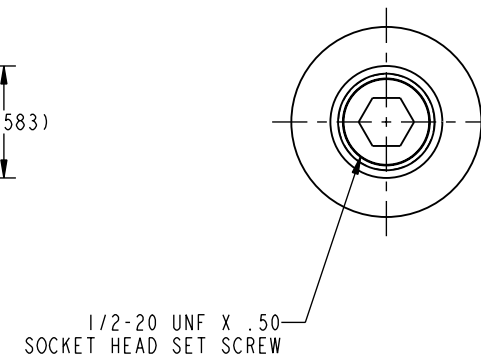
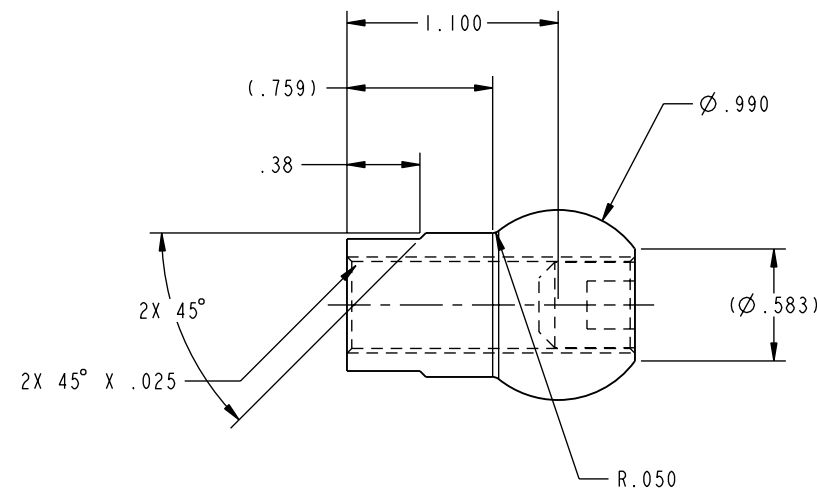
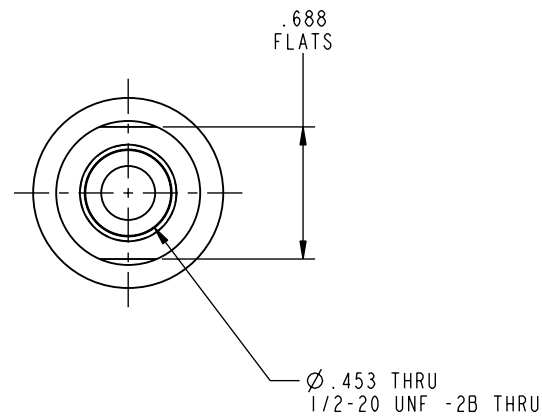


ILC15801002 REV A ECN 2442



CAD CONTROL
DRAWING



VEKTEK, INC.
1334 E. SIXTH AVE. P.O. BOX 625
EMPORIA, KS. 66801 U.S.A.

A	2442	RELEASE	K. ROEMER	12/05/12	15801002	A	HEAD, CLUB, BALL, 600
REV	IN ACCORDANCE WITH ECN	EFFECTIVE DATE	REVISED BY	DATE	REFERENCE MODEL	REF REV	*****
DRW BY:	K. ROEMER	DRAWING STATUS: Released			TOLERANCES DO NOT APPLY DIMENSIONS ARE NOMINAL		SIZE B
DATE:	06/08/12	PRODUCTION APPROVED FOR RELEASED STATUS ONLY			FORM FEG036, Rev. A		ILC15801002 REV A

SHEET 1 OF 1