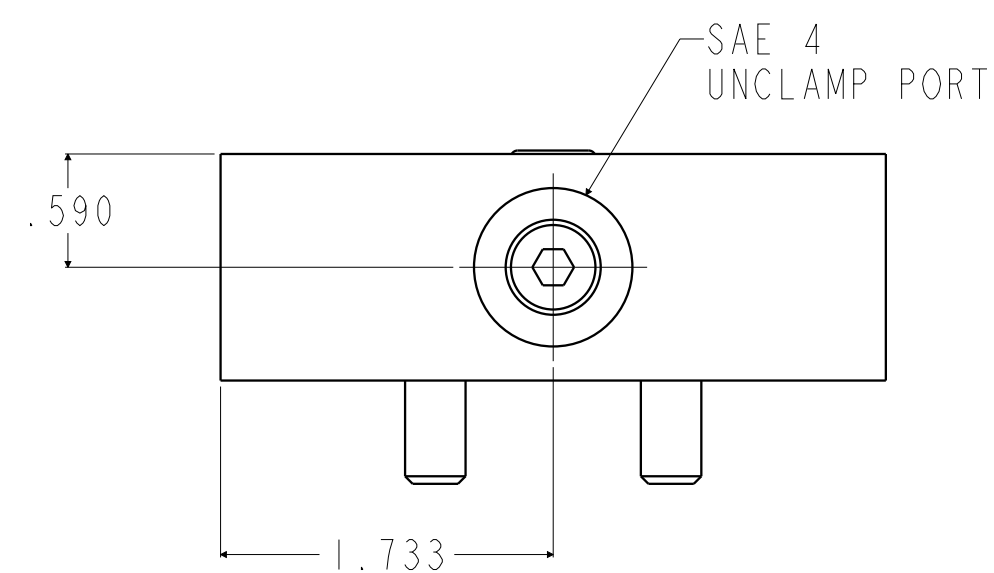
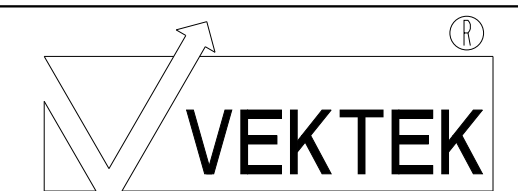


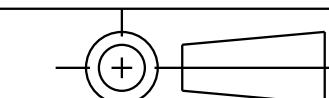
ILC15820008 REV. A ECN41112



CAD CONTROL
DRAWING



VEKTEK, INC.
1334 E. SIXTH AVE. P.O. BOX 625
EMPORIA, KS. 66801 U.S.A.



A	4112	RELEASE	JDW	02/21/20	15820008	A	PLATE, MOUNT, SAE 4/MM PORTS, M8 SHCS
REV	IN ACCORDANCE WITH ECN	EFFECTIVE DATE	REVISED BY	DATE	REFERENCE MODEL	REF REV	
DRW BY:	JDW	DRAWING STATUS: Released			TOLERANCES DO NOT APPLY DIMENSIONS ARE NOMINAL		SIZE D
DATE:	02/21/20	PRODUCTION APPROVED FOR RELEASED STATUS ONLY			ILC15820008		REV A