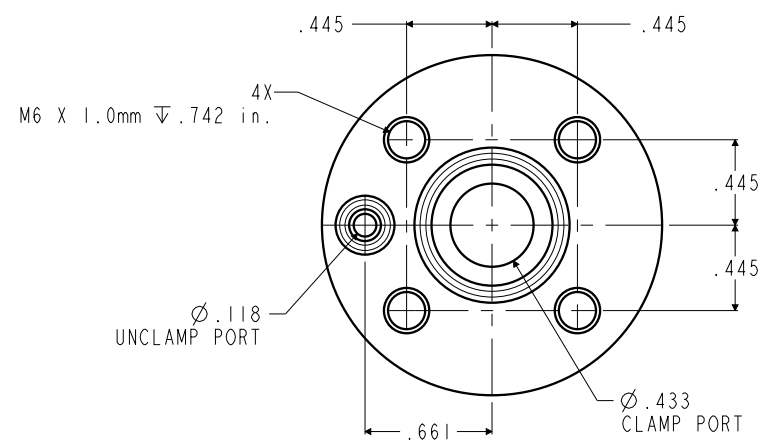


ILCI5821000 REV. A ECN4112



<b>CAD CONTROL DRAWING</b>			
		VEKTEK, INC. 1334 E. SIXTH AVE. P.O. BOX 625 EMPORIA, KS. 66801 U.S.A.	

A	4112	RELEASE	JDW	02/21/20	15821000	A	CENTER CLAMP, MINI, 2PT, .98-1.14 IN
REV	IN ACCORDANCE WITH ECN	EFFECTIVE DATE	REVISED BY	DATE	REFERENCE MODEL	REF REV	
DRW BY:	JDW	<b>DRAWING STATUS: Released</b>			TOLERANCES DO NOT APPLY DIMENSIONS ARE NOMINAL		SIZE B
DATE:	02/21/20	PRODUCTION APPROVED FOR RELEASED STATUS ONLY					ILCI5821000 REV A

FORM FEG036, Rev. B

SHEET 1 OF 1