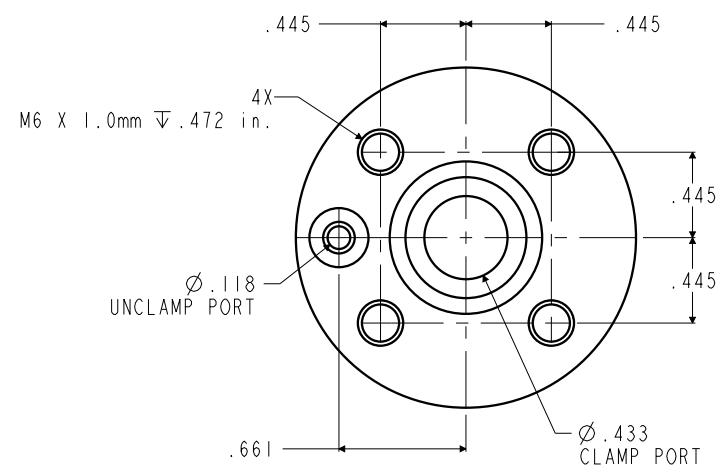


ILC15821301 REV. A ECN4112



**CAD CONTROL
DRAWING**



VEKTEK, INC.
 1334 E. SIXTH AVE. P.O. BOX 625
 EMPORIA, KS. 66801 U.S.A.

A	4112	RELEASE	JDW	02/21/20	15821301	A	CENTER CLAMP, MINI, 3PT, 1.42-1.57 IN
REV	IN ACCORDANCE WITH ECN	EFFECTIVE DATE	REVISED BY	DATE	REFERENCE MODEL	REF REV	
DRW BY:	JDW	DRAWING STATUS: Released			TOLERANCES DO NOT APPLY DIMENSIONS ARE NOMINAL		SIZE B
DATE:	02/21/20	PRODUCTION APPROVED FOR RELEASED STATUS ONLY					ILC15821301 REV A

FORM FEG036, Rev. B

SHEET 1 OF 1