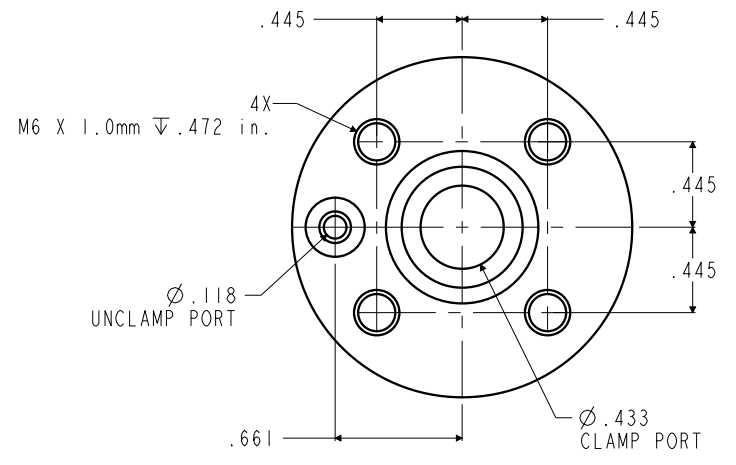


ILC15821400 REV. A ECN4112



| | | |
|----------------------------|--|--|
| CAD CONTROL DRAWING | | |
| | VEKTEK, INC. 1334 E. SIXTH AVE. P.O. BOX 625 EMPORIA, KS. 66801 U.S.A. | |

| | | | | |
|---------|------------------------|--|------------|----------|
| A | 4112 | RELEASE | JDW | 02/21/20 |
| REV | IN ACCORDANCE WITH ECN | EFFECTIVE DATE | REVISED BY | DATE |
| DRW BY: | JDW | DRAWING STATUS: Released | | |
| DATE: | 02/21/20 | PRODUCTION APPROVED FOR RELEASED STATUS ONLY | | |

| | | |
|---|---------|---------------------------------------|
| 15821400 | A | CENTER CLAMP, MINI, 2PT, 1.54-1.69 IN |
| REFERENCE MODEL | REF REV | |
| TOLERANCES DO NOT APPLY DIMENSIONS ARE NOMINAL | | SIZE B |
| ILC15821400 | | REV A |

FORM FEG036, Rev. B