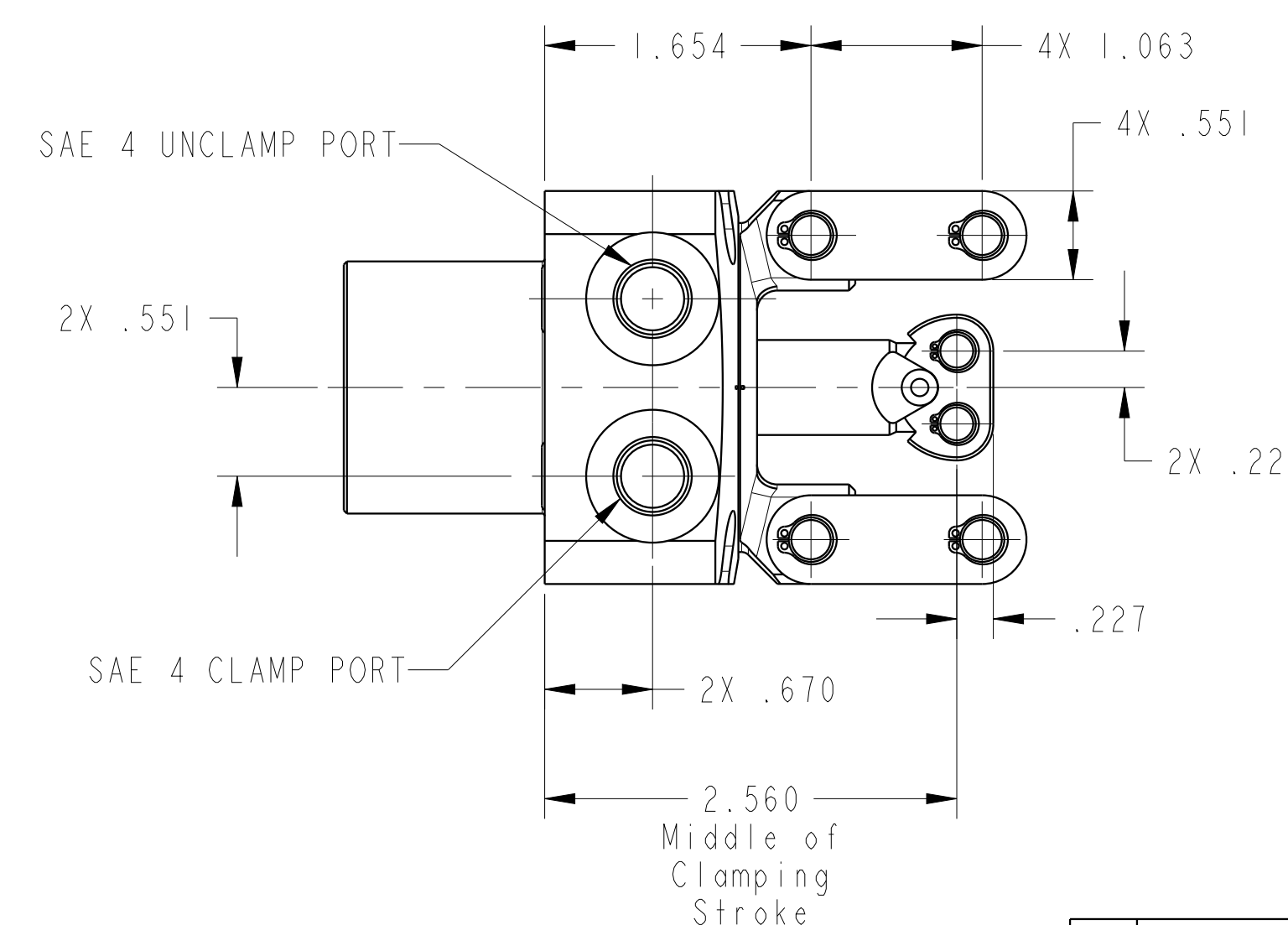
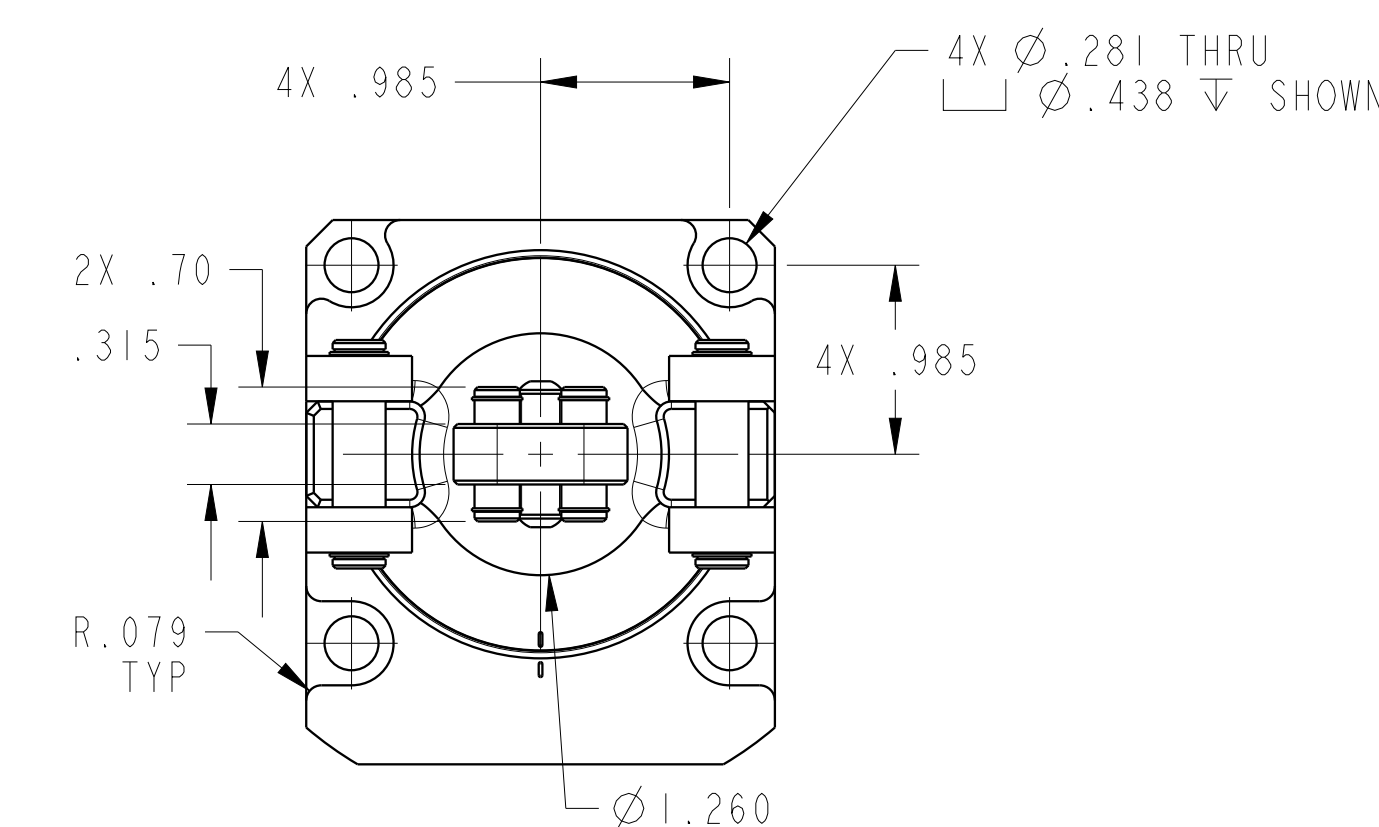
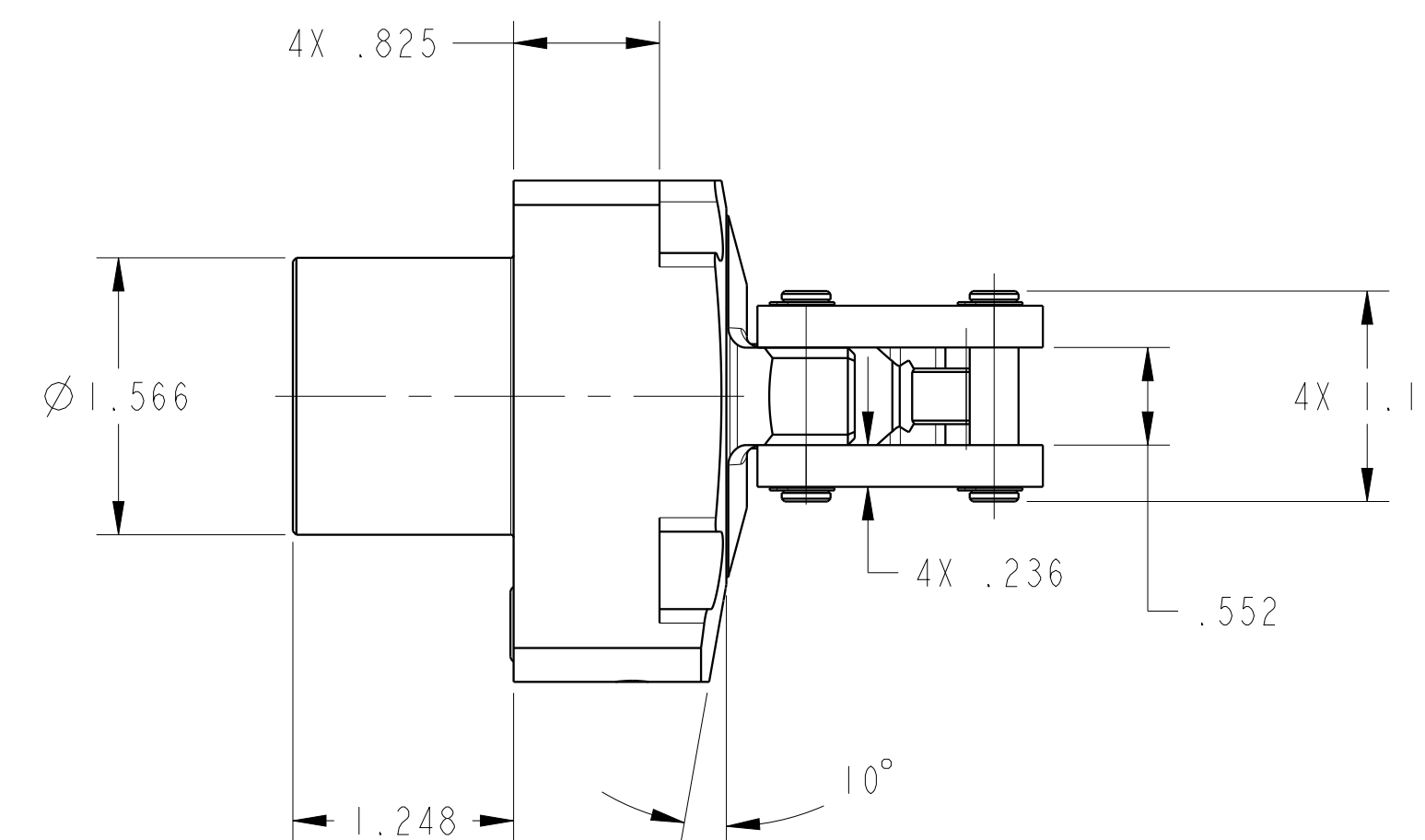
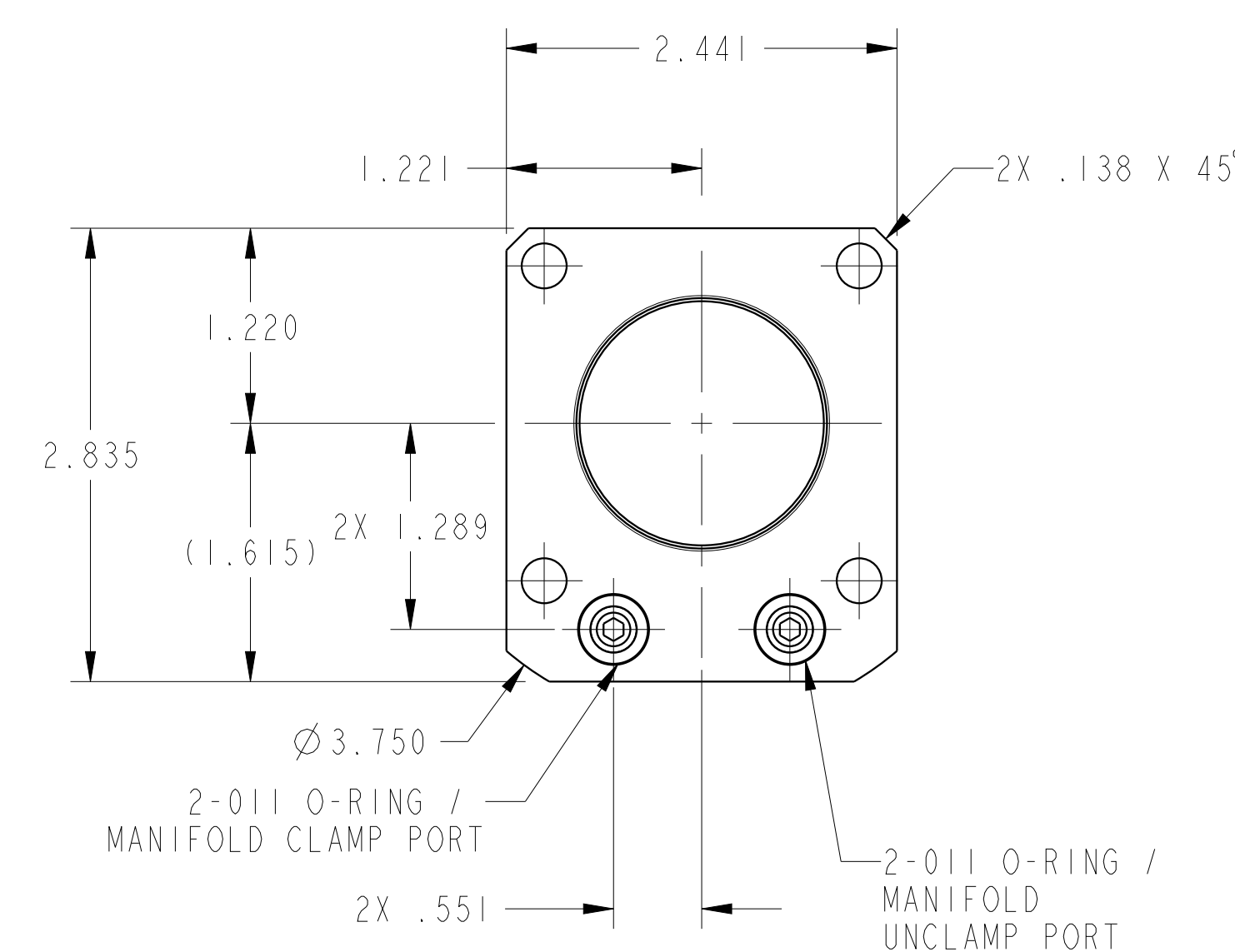
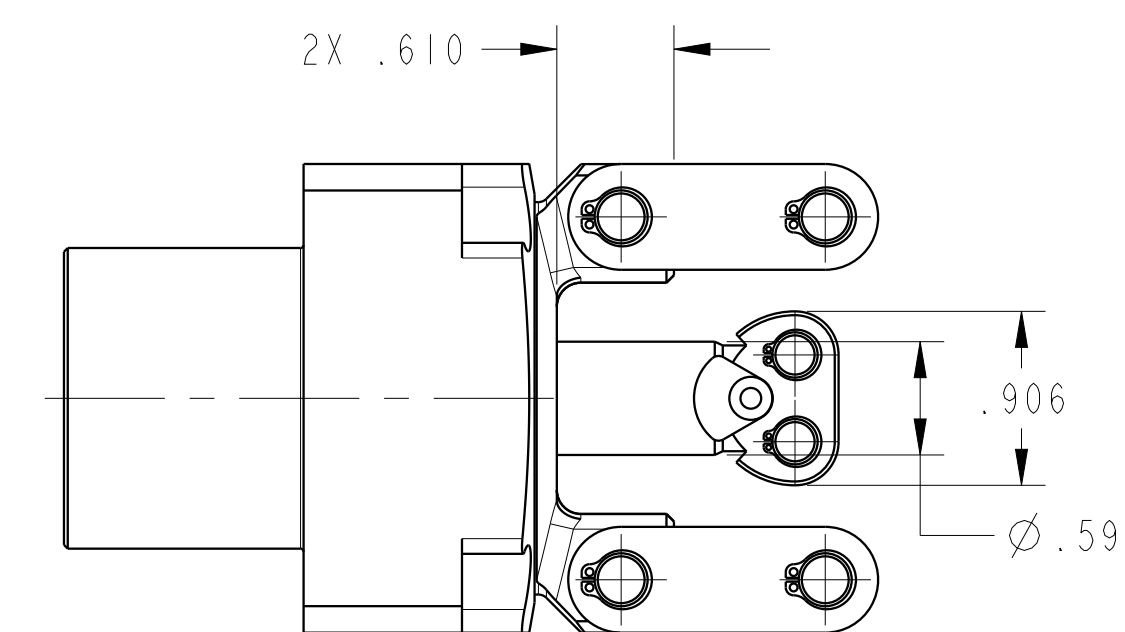


ILC16321820 REV A ECN 4195

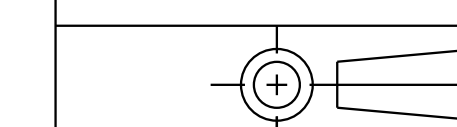


CAD CONTROL DRAWING



VEKTEK, INC.  
1334 E. SIXTH AVE. P.O. BOX 625  
EMPORIA, KS. 66801 U.S.A.

A	4195	RELEASE	A.THOMSEN	3-JUN-2020
REV	IN ACCORDANCE WITH ECN	EFFECTIVE DATE	REVISED BY	DATE
DRW BY:	A.THOMSEN	DRAWING STATUS: <b>Released</b>		
DATE:	25-MAY-2020	PRODUCTION APPROVED FOR RELEASED STATUS ONLY		



16321820	A
REFERENCE MODEL	REF REV

TOLERANCES DO NOT APPLY  
DIMENSIONS ARE NOMINAL

SIZE D ILC16321820 REV A