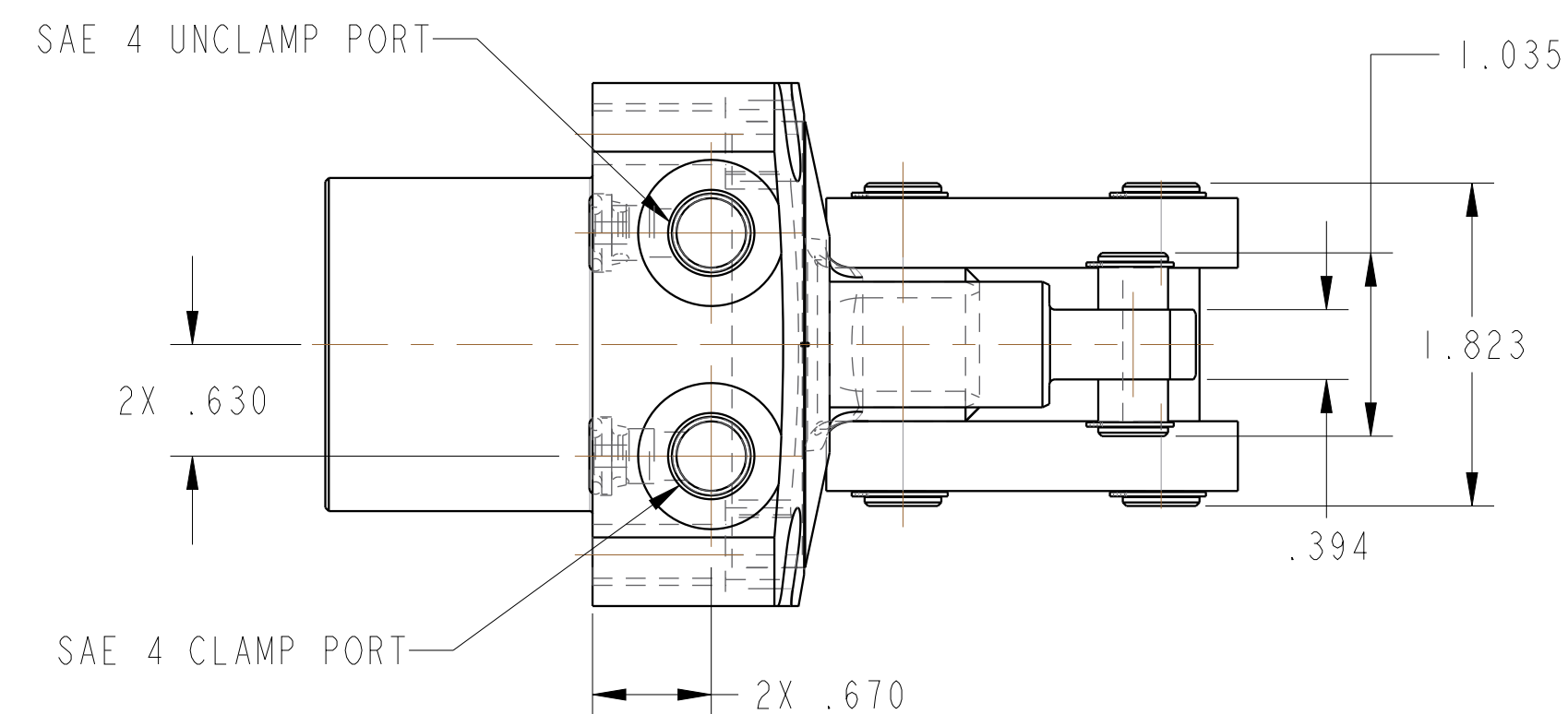
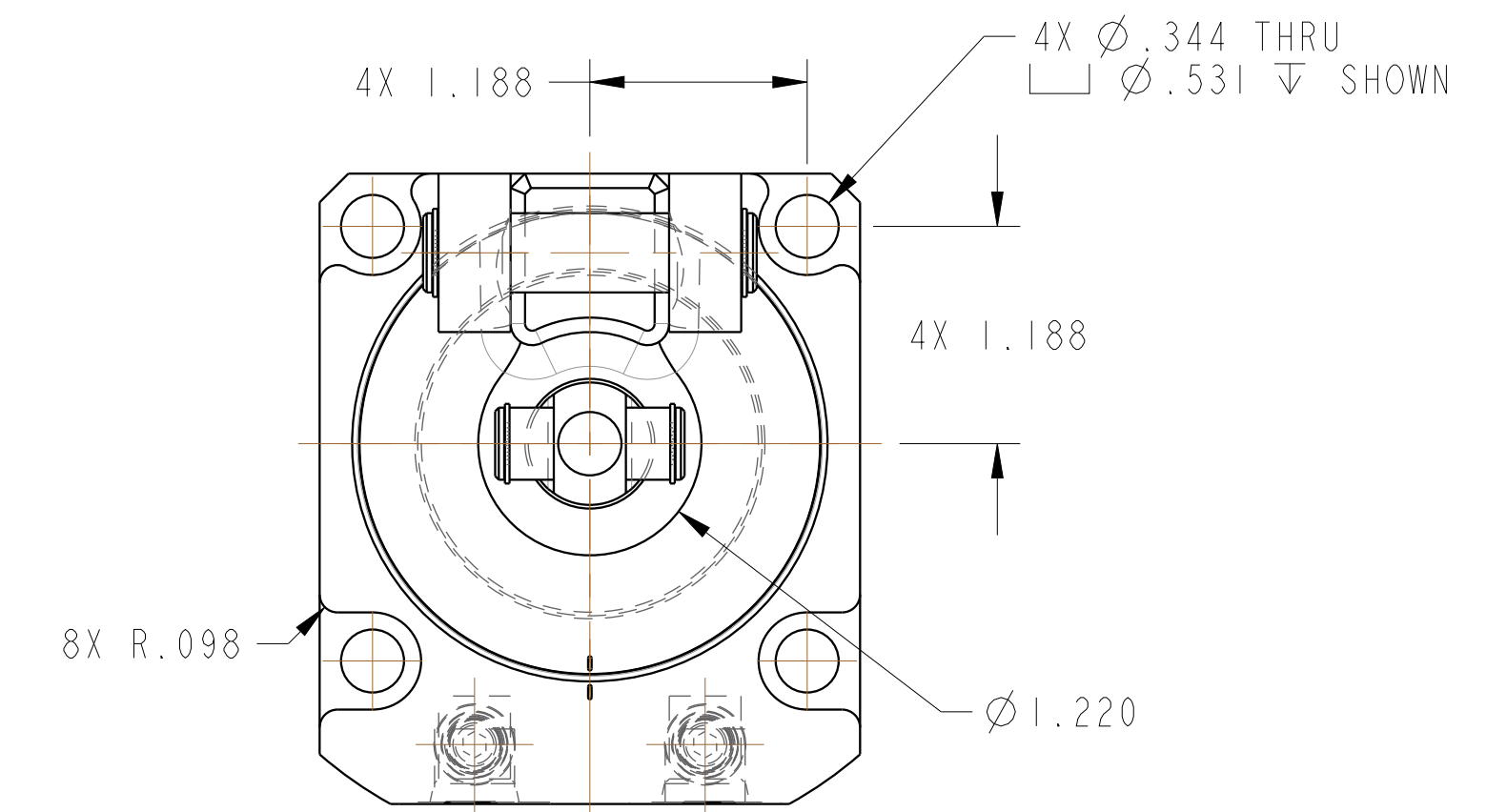
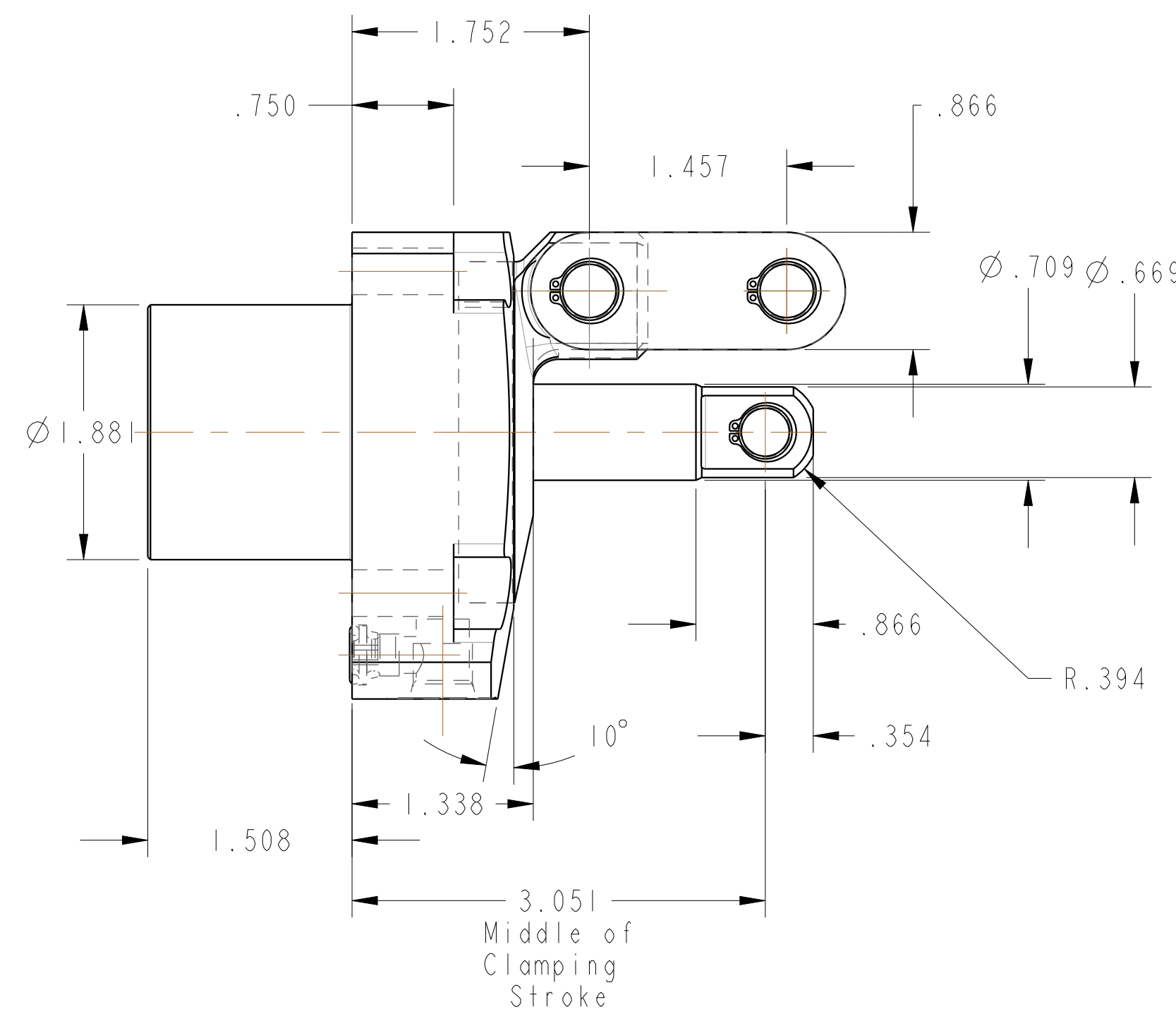
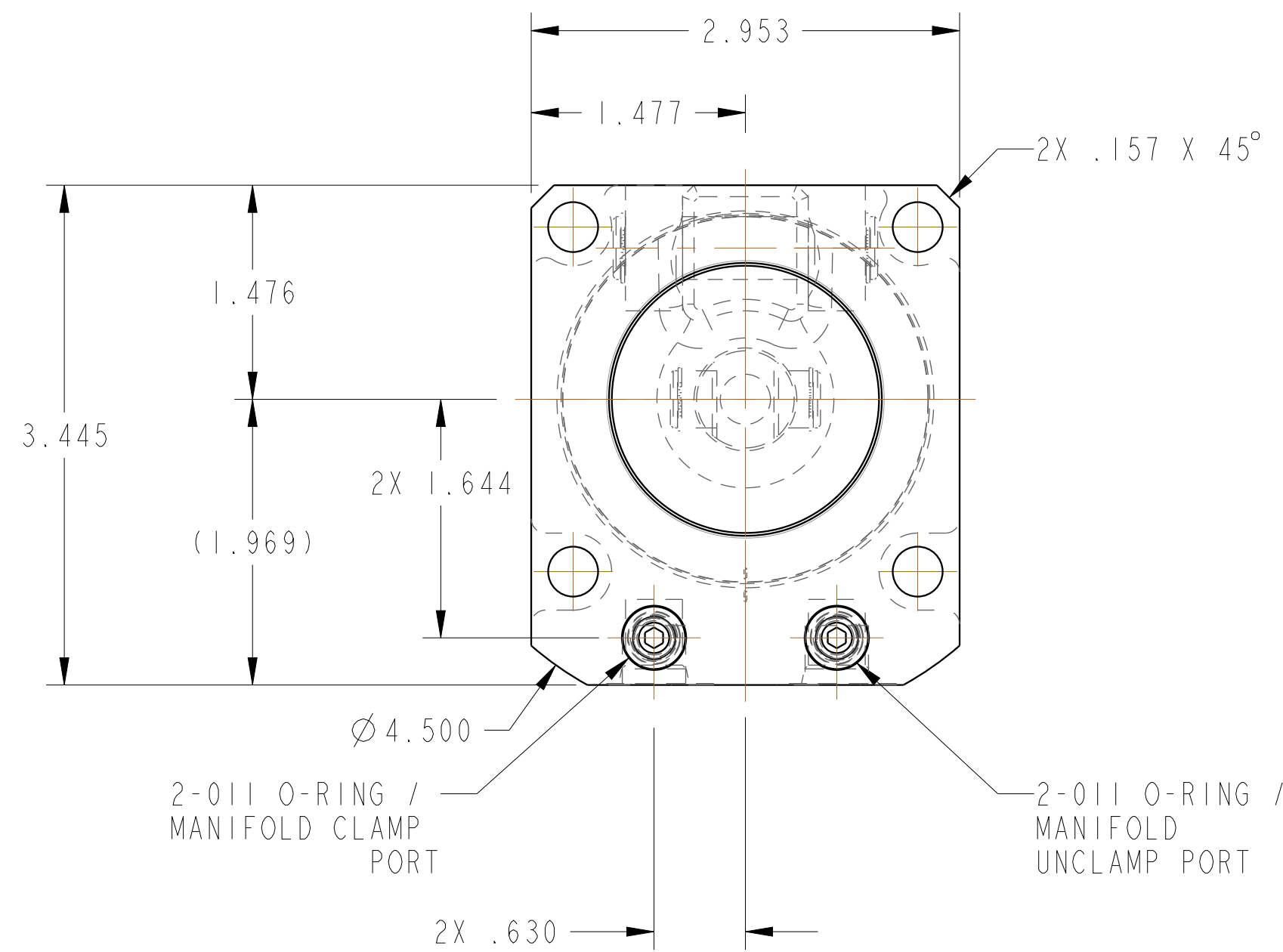
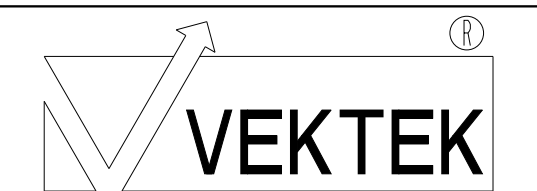


ILC16322200 REV B ECN 5054



CAD CONTROL DRAWING



VEKTEK, INC.  
1334 E. SIXTH AVE. P.O. BOX 625  
EMPORIA, KS. 66801 U.S.A.

B	5054	RELEASE	RLK	3/14/23	16322200	A	LC, TL360, DA, 24001b
REV	IN ACCORDANCE WITH ECN	EFFECTIVE DATE	REVISED BY	DATE	REFERENCE MODEL	REF REV	
DRW BY:	BCD	DRAWING STATUS: Released			TOLERANCES DO NOT APPLY DIMENSIONS ARE NOMINAL		SIZE D
DATE:	6-21-16	PRODUCTION APPROVED FOR RELEASED STATUS ONLY					ILC16322200 REV B