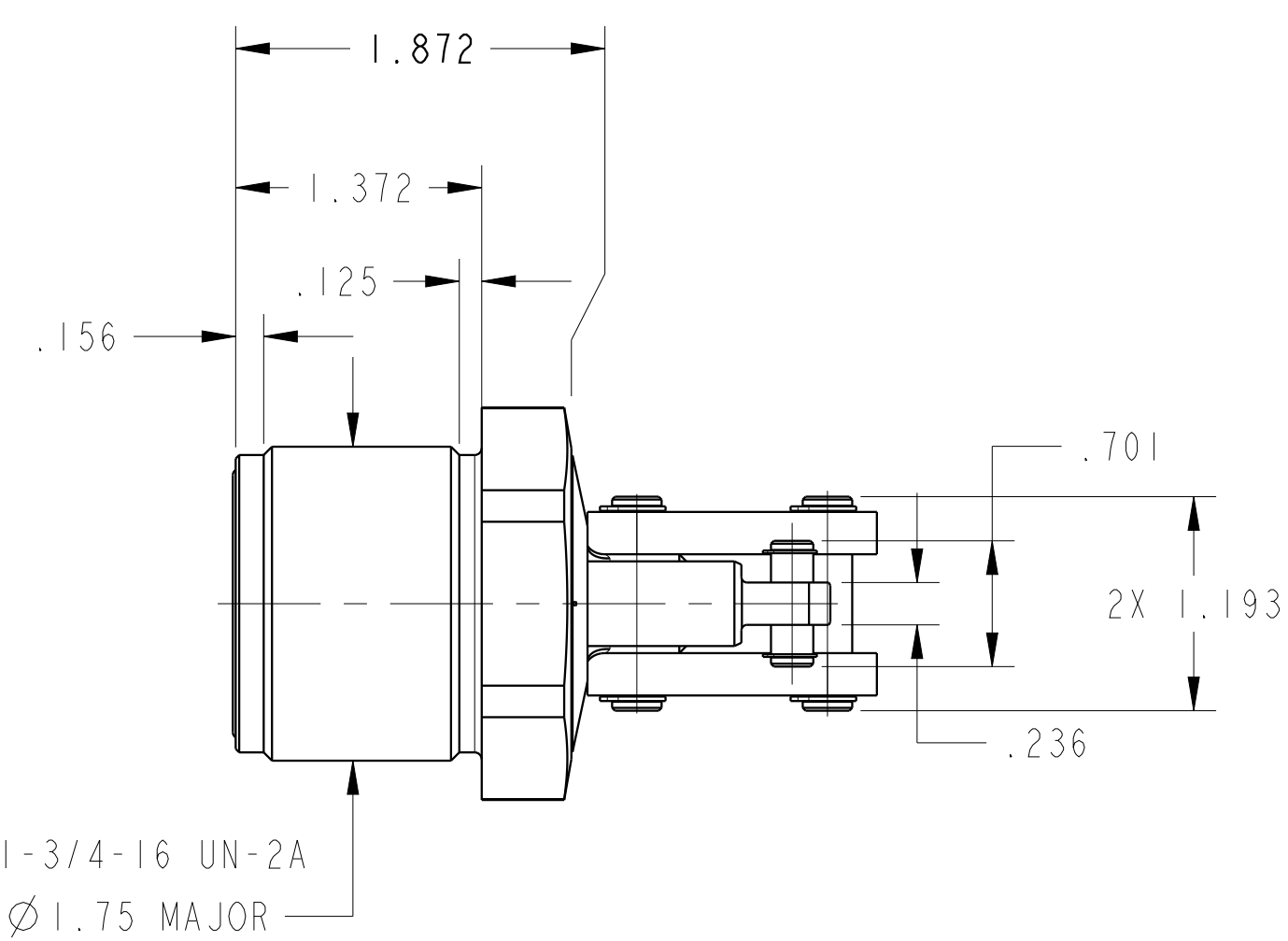
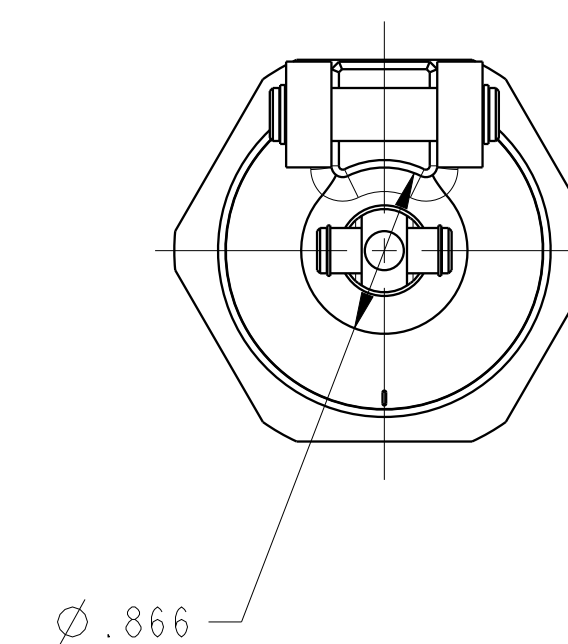
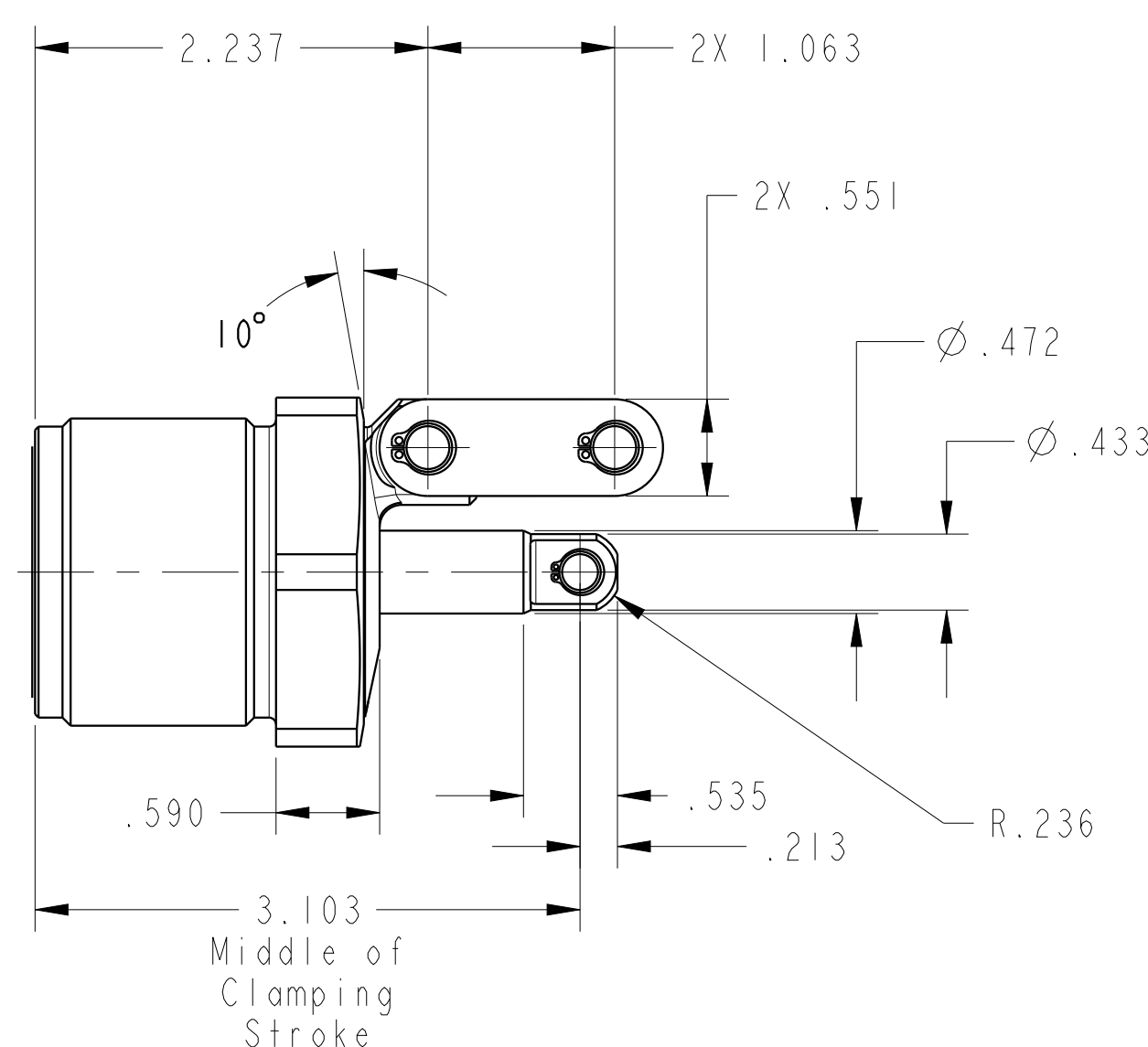
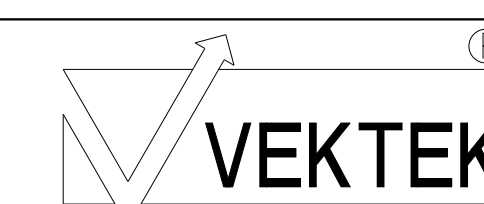


ILC16421500 REV A ECN 4195



CAD CONTROL
DRAWING



VEKTEK, INC.
1334 E. SIXTH AVE. P.O. BOX 625
EMPORIA, KS. 66801 U.S.A.

A	4195	RELEASE	A.THOMSEN	3-JUN-2020
REV	IN ACCORDANCE WITH ECN	EFFECTIVE DATE	REVISED BY	DATE
DRW BY:	A.THOMSEN	DRAWING STATUS: Released		
DATE:	25-MAY-2020	PRODUCTION APPROVED FOR RELEASED STATUS ONLY		

TOLERANCES DO NOT APPLY DIMENSIONS ARE NOMINAL	SIZE D

LC, CM, TL360, DA, 10001b	REV A
ILC16421500	

FORM FEG036, Rev. B