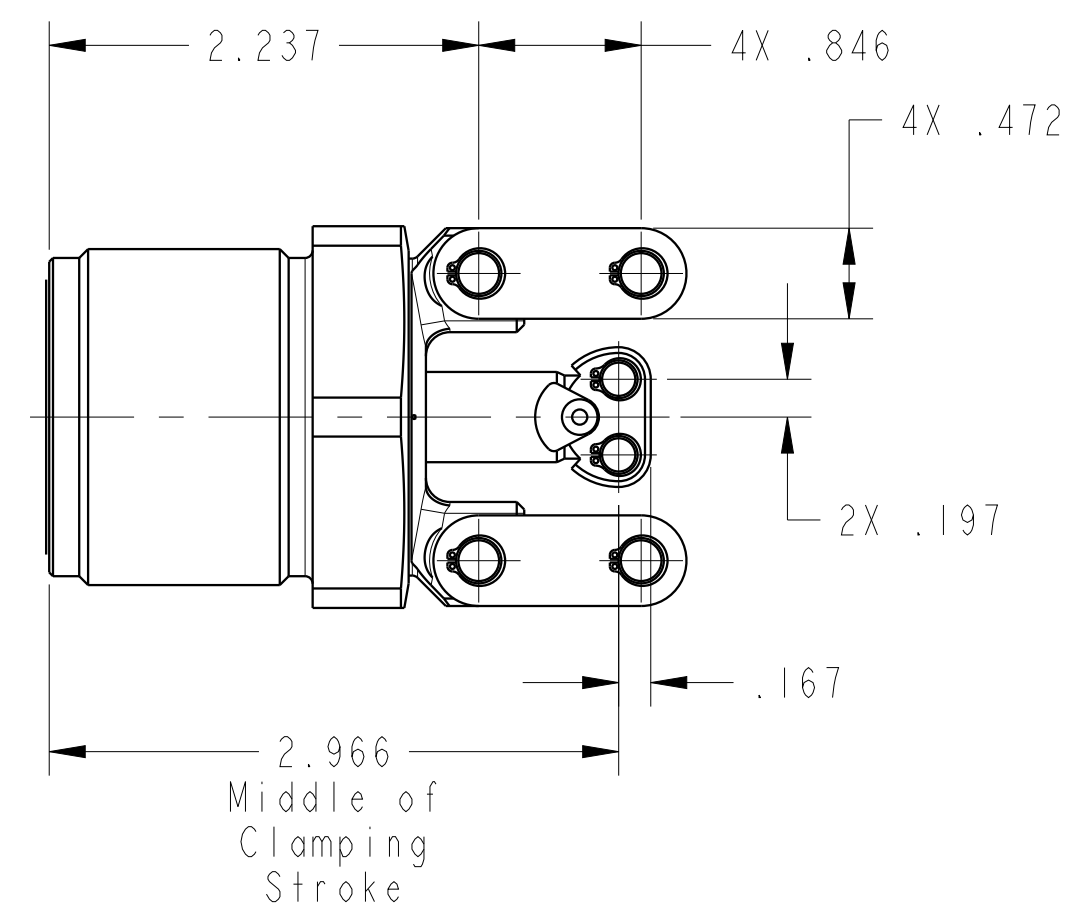
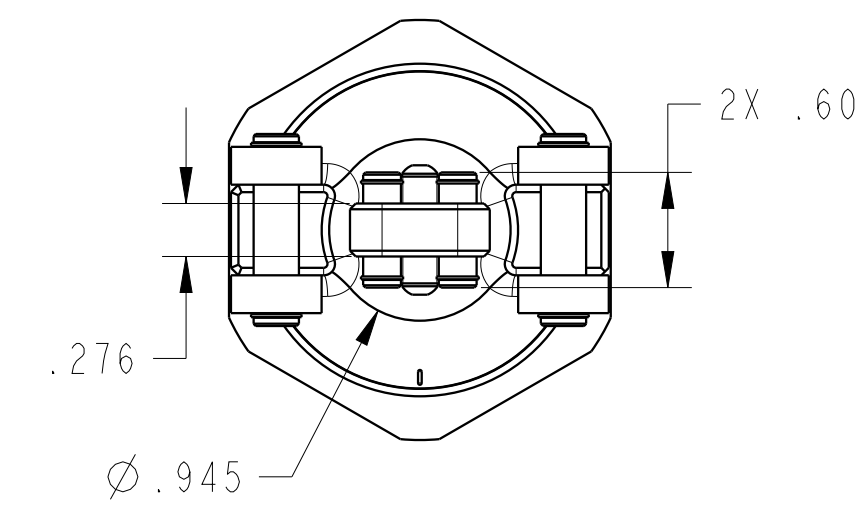
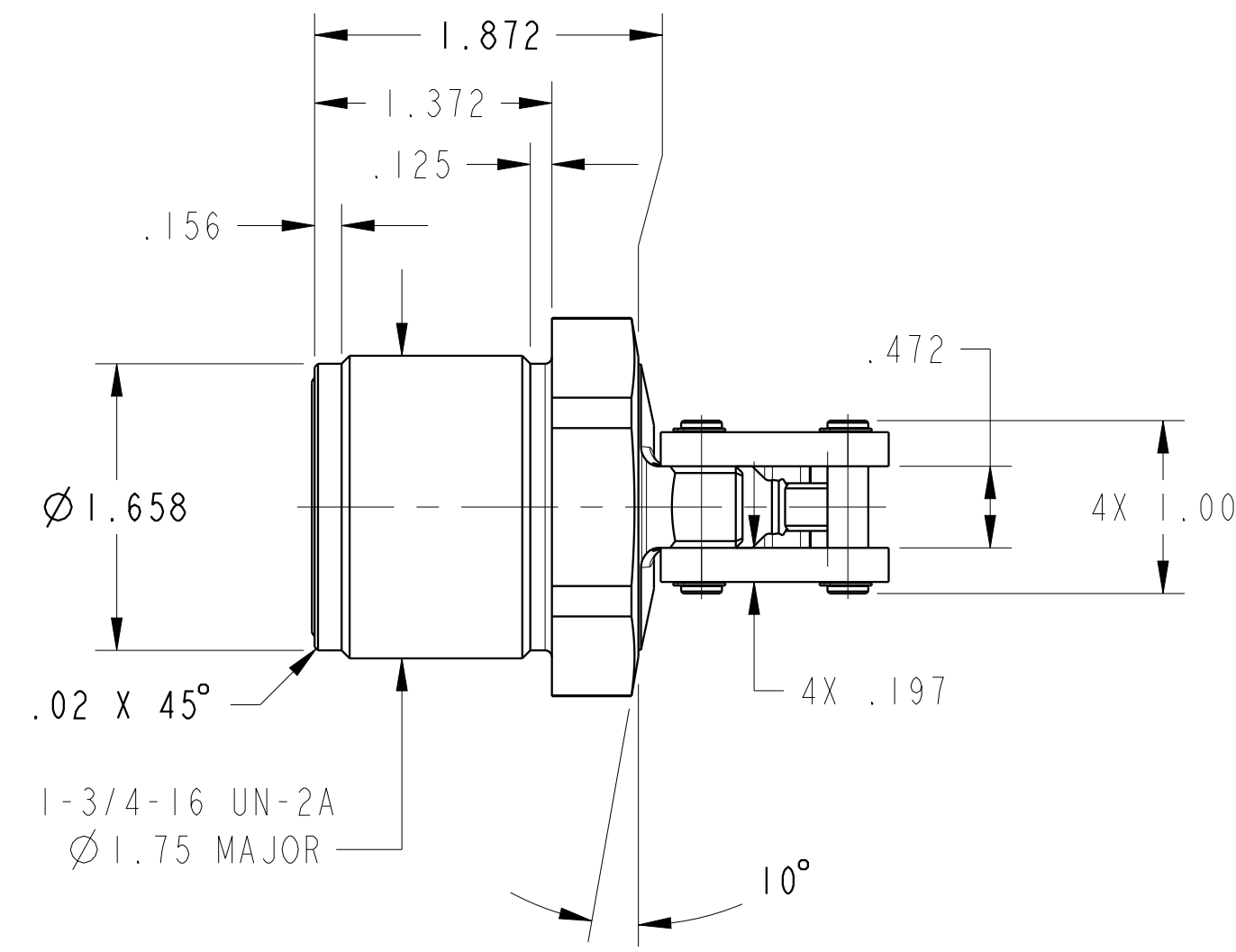
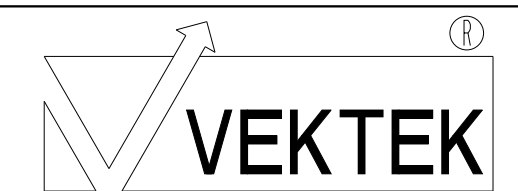


ILC16421520 REV A ECN 4195



CAD CONTROL  
DRAWING



VEKTEK, INC.  
1334 E. SIXTH AVE. P.O. BOX 625  
EMPORIA, KS. 66801 U.S.A.

|         |                        |  |            |            |
|---------|------------------------|--|------------|------------|
| A       | 4195                   | RELEASE                                      | A.THOMSEN  | 3-JUN-2020 |
| REV     | IN ACCORDANCE WITH ECN | EFFECTIVE DATE                               | REVISED BY | DATE       |
| DRW BY: | A.THOMSEN              | DRAWING STATUS: <b>Released</b>              |            |            |
| DATE:   | 25-MAY-2020            | PRODUCTION APPROVED FOR RELEASED STATUS ONLY |            |            |

|   |         |
|---|---------|
| 16421520  | A       |
| REFERENCE MODEL                                   | REF REV |
| TOLERANCES DO NOT APPLY<br>DIMENSIONS ARE NOMINAL |         |

|                                |
|--------------------------------|
| LC, CM, TL360-TWIN, DA, 11001b |
| SIZE D                         |
| ILC16421520                    |
| REV A                          |