

1

2

3

4

D

D

C

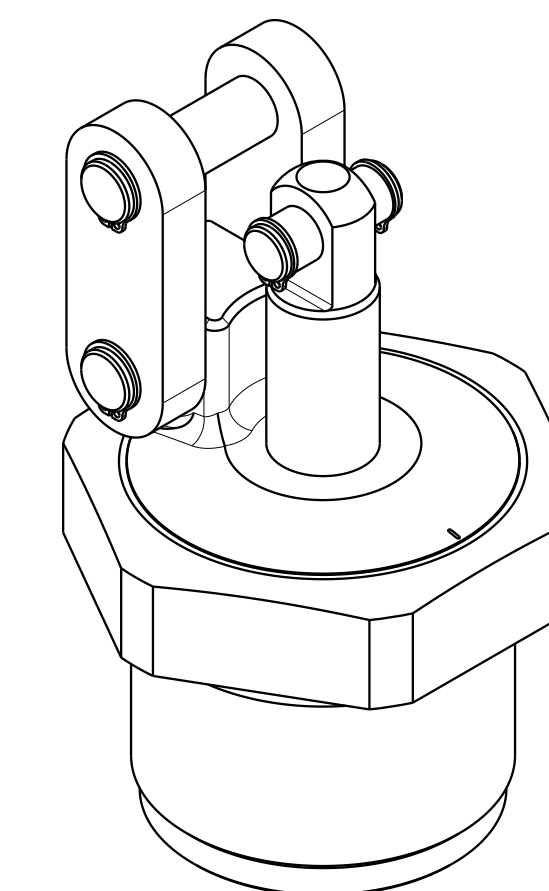
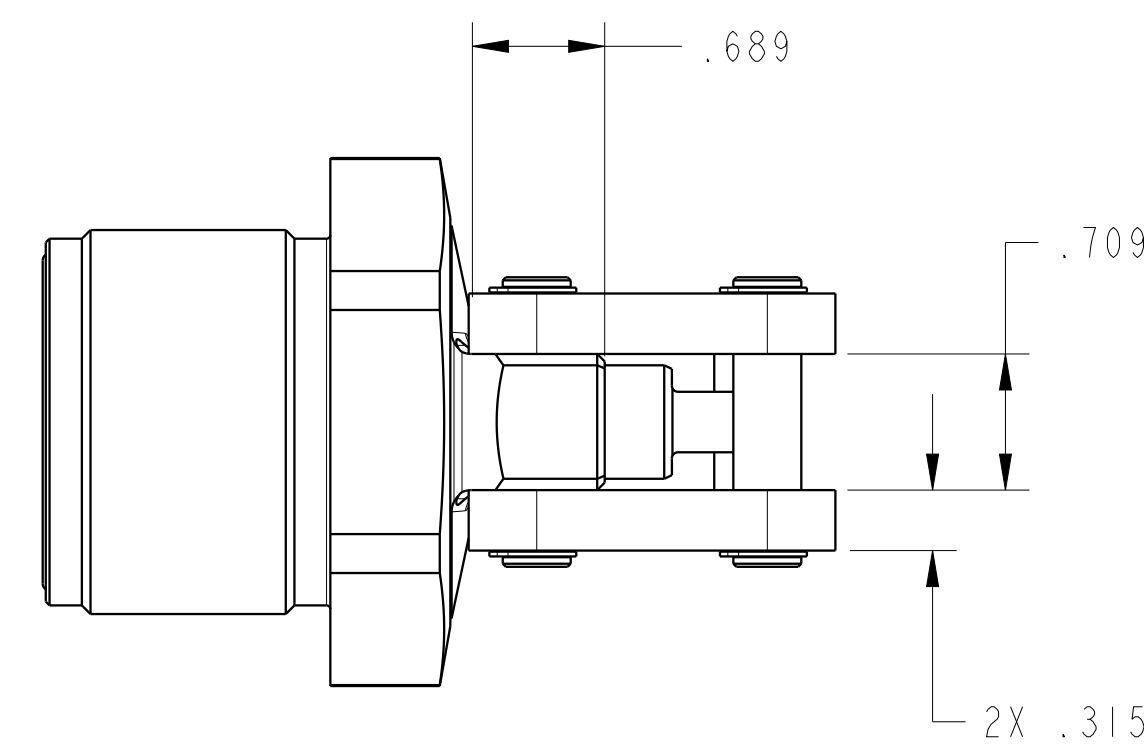
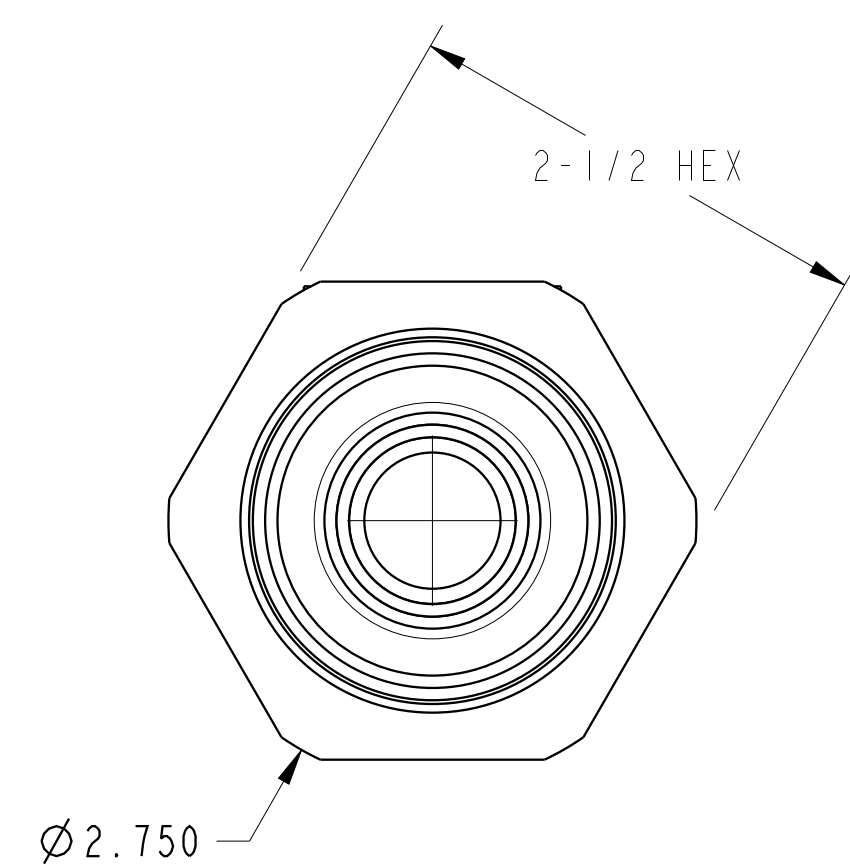
C

B

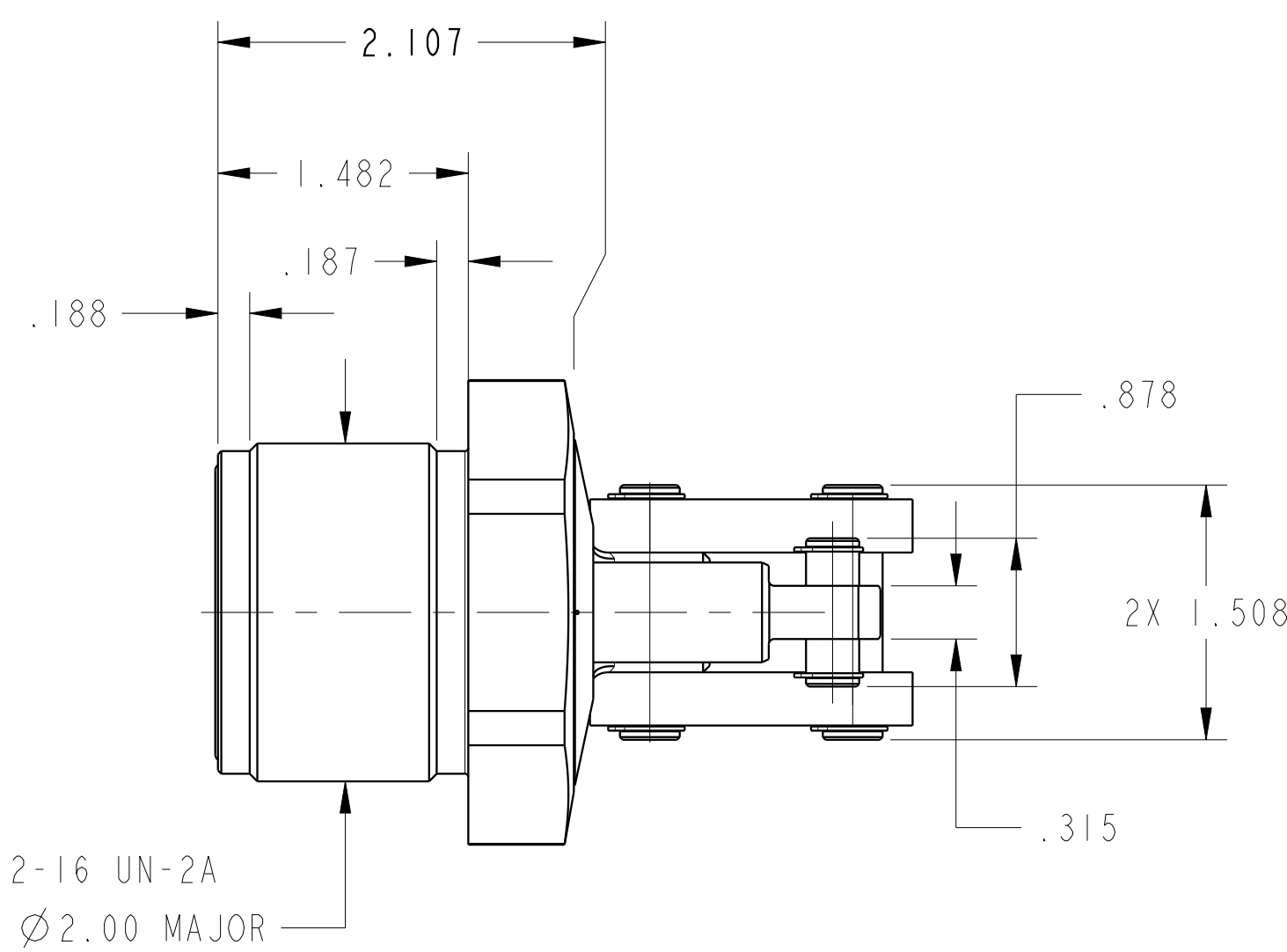
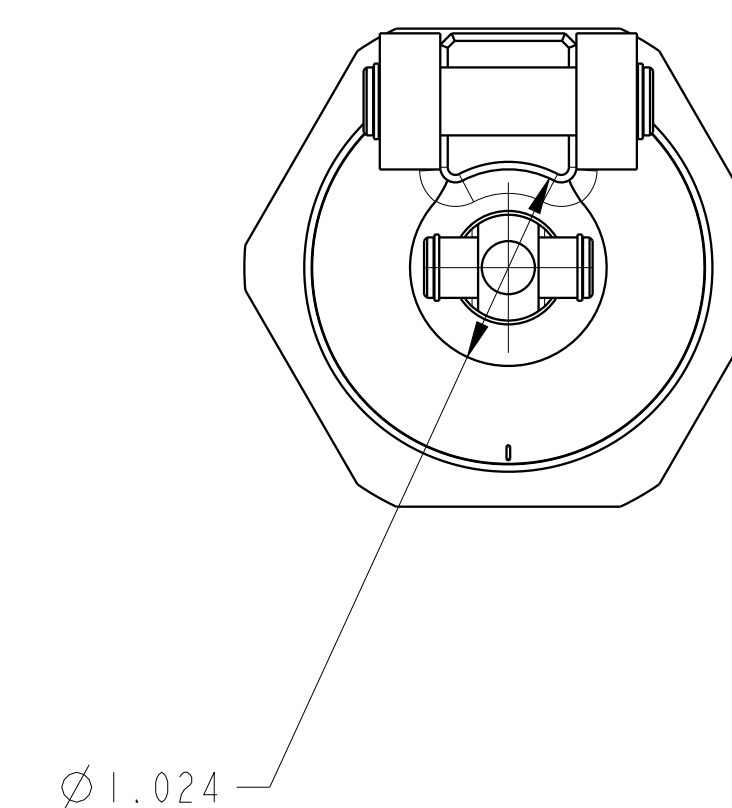
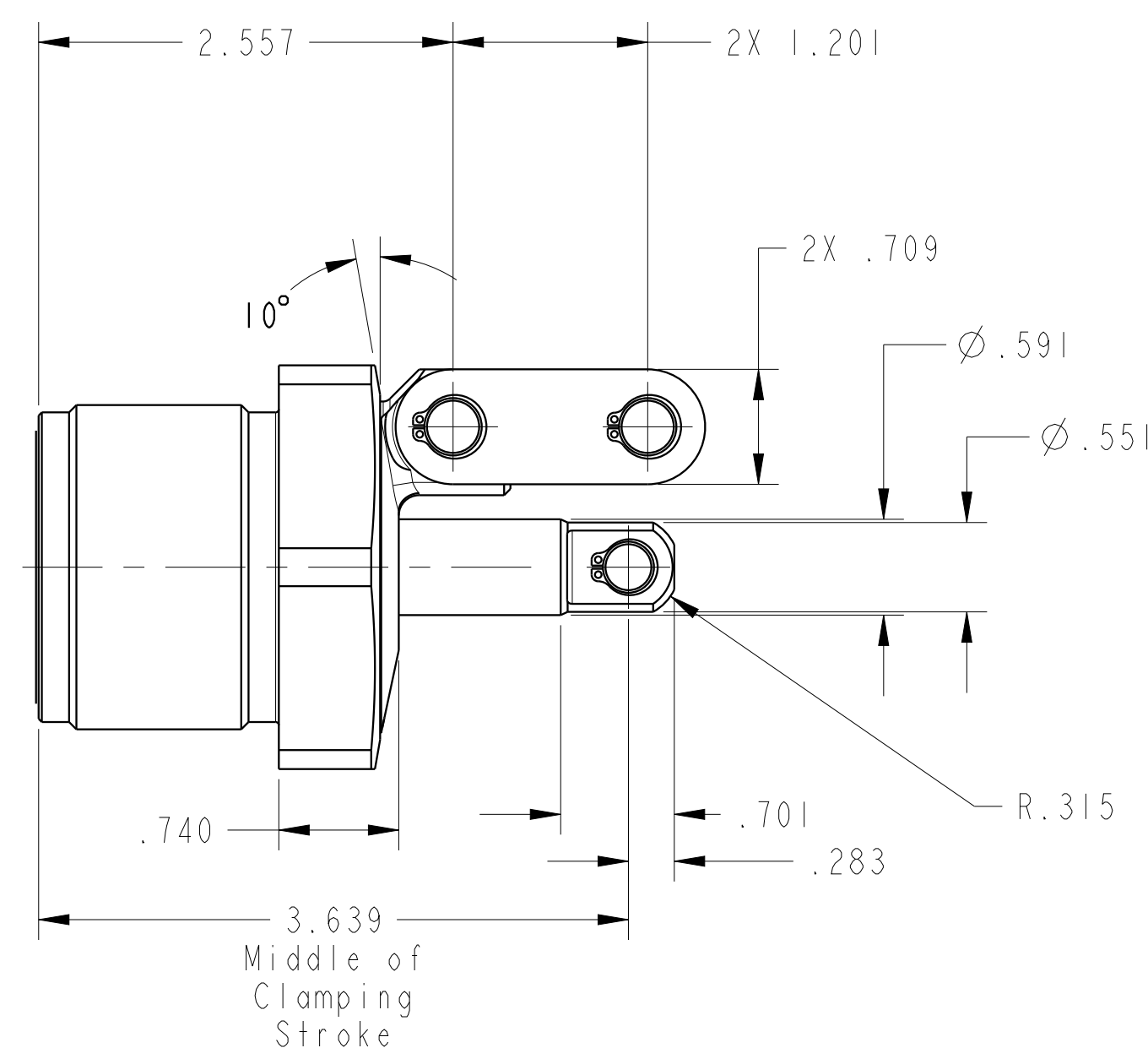
B

A

A

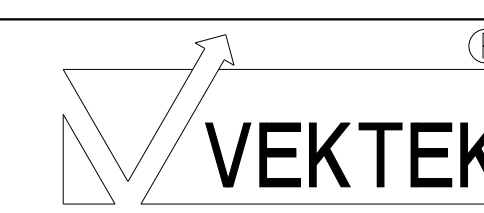


ILC16421800 REV A ECN 4195



2-16 UN-2A
Ø 2.00 MAJOR

CAD CONTROL
DRAWING



VEKTEK, INC.
1334 E. SIXTH AVE. P.O. BOX 625
EMPORIA, KS. 66801 U.S.A.

A	4195	RELEASE	A.THOMSEN	3-JUN-2020
REV	IN ACCORDANCE WITH ECN	EFFECTIVE DATE	REVISED BY	DATE
DRW BY: A.THOMSEN		DRAWING STATUS: Released		
DATE: 25-MAY-2020		PRODUCTION APPROVED FOR RELEASED STATUS ONLY		

TOLERANCES DO NOT APPLY DIMENSIONS ARE NOMINAL	

SIZE D ILC16421800 REV A

FORM FEG036, Rev. B

1

2

3

4

SHEET 1 OF 1