

1

2

3

4

D

D

C

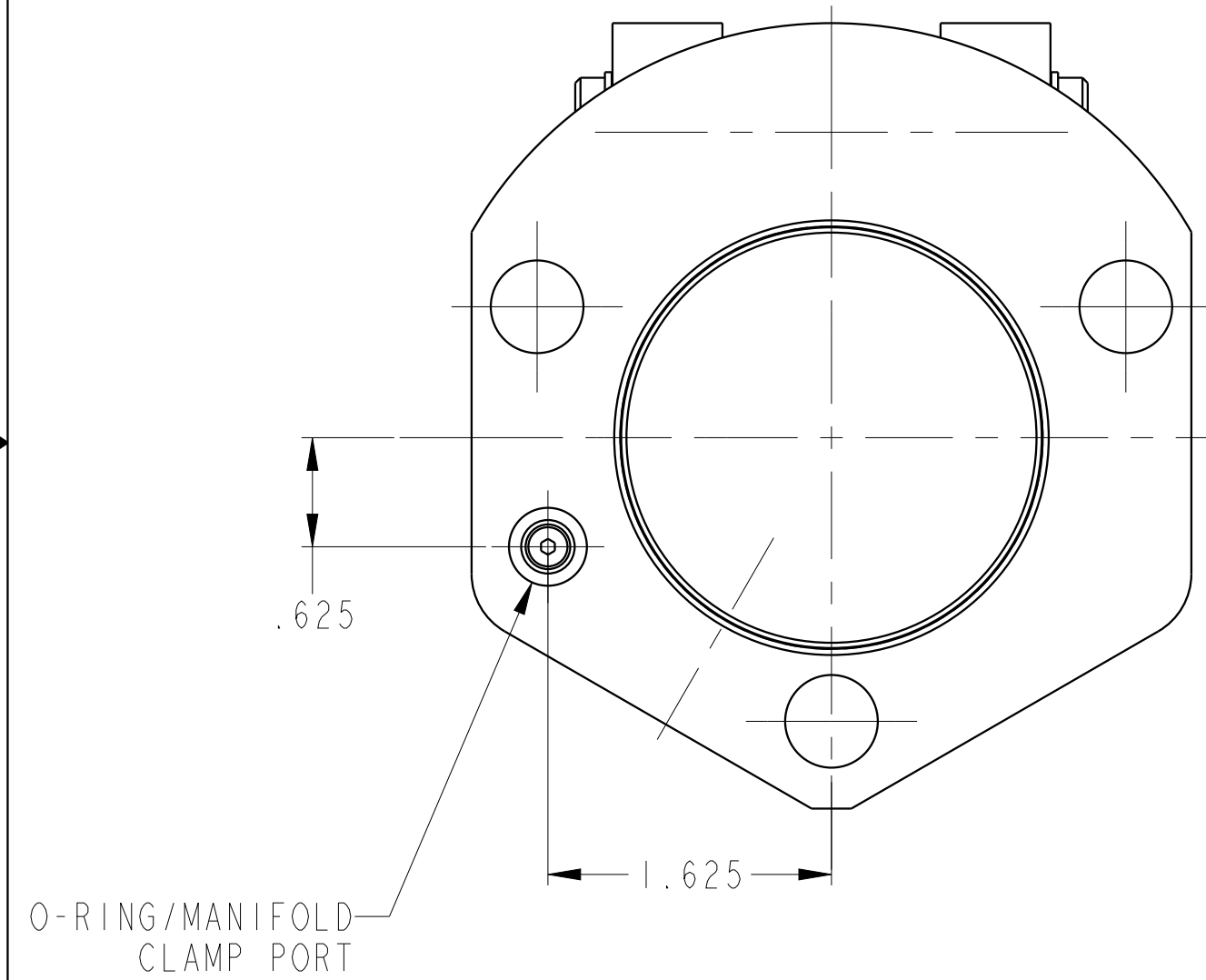
C

B

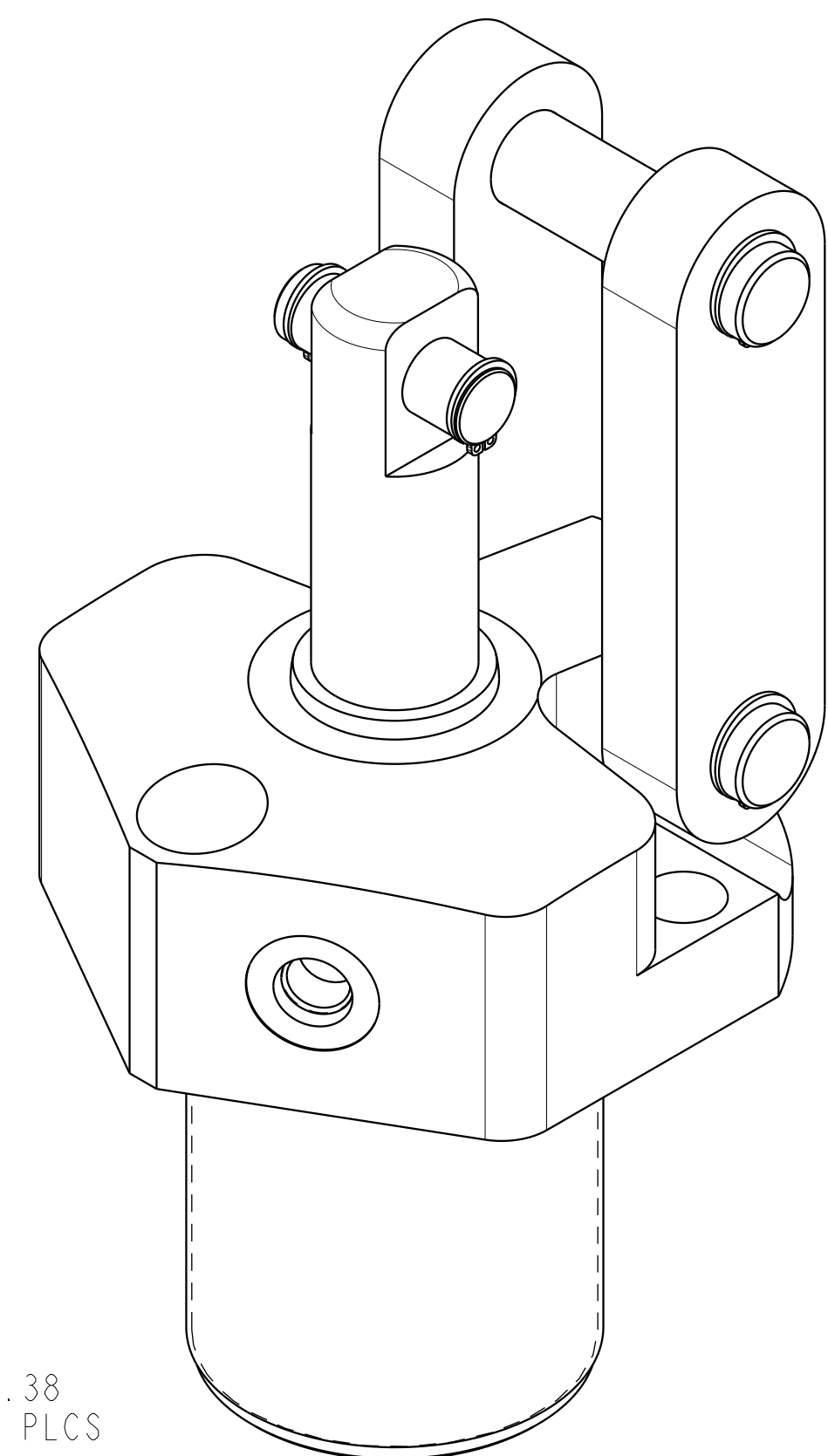
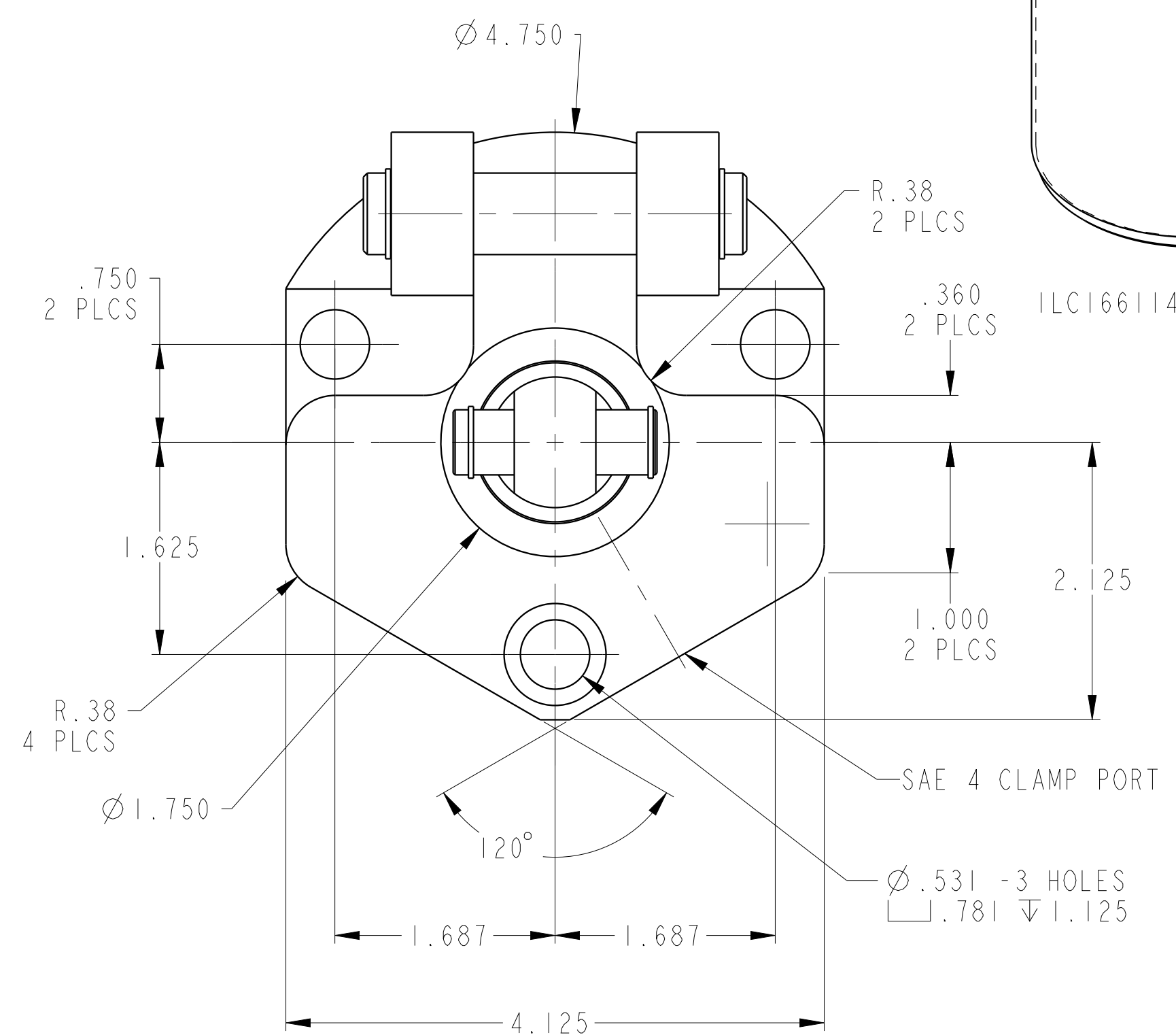
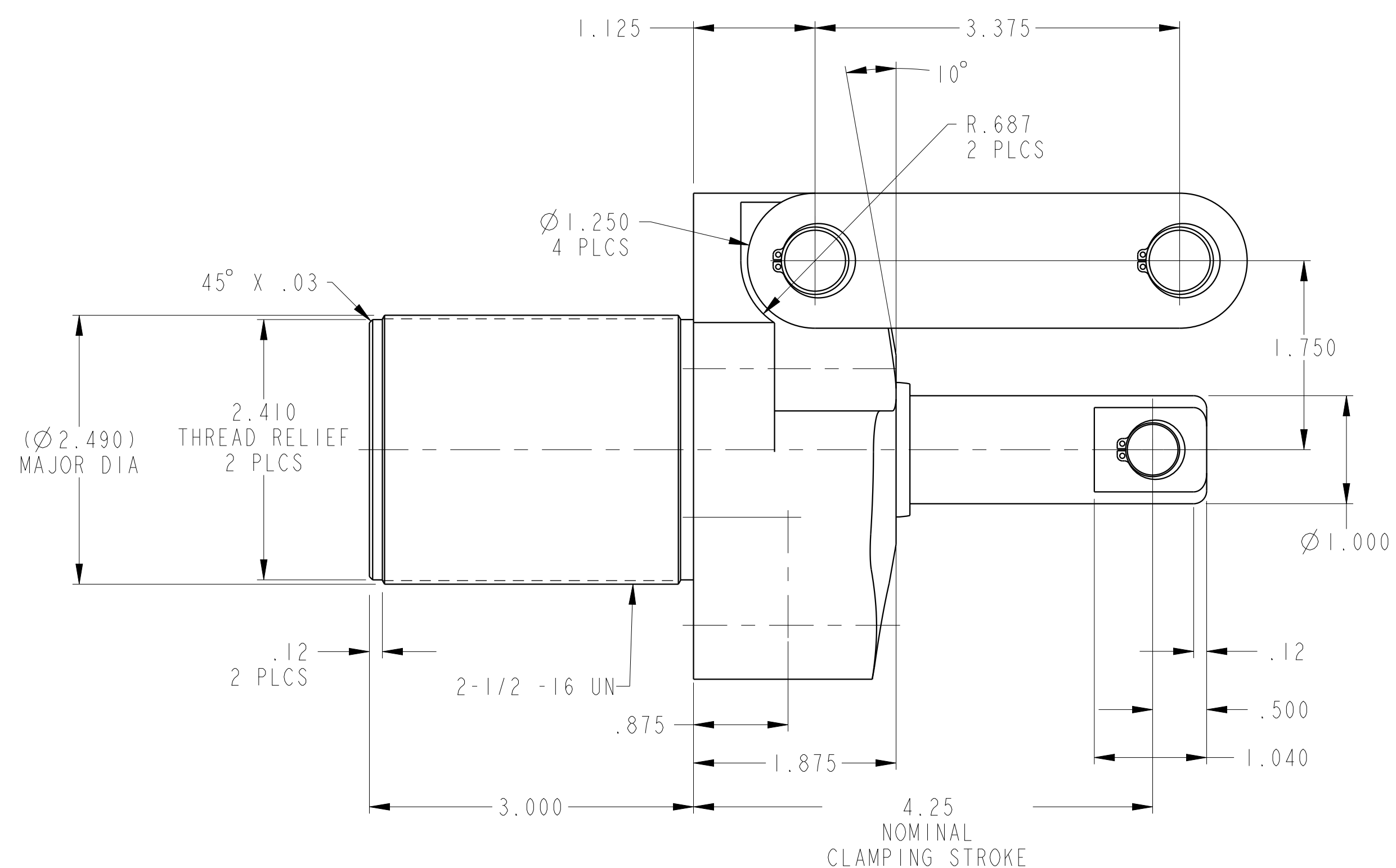
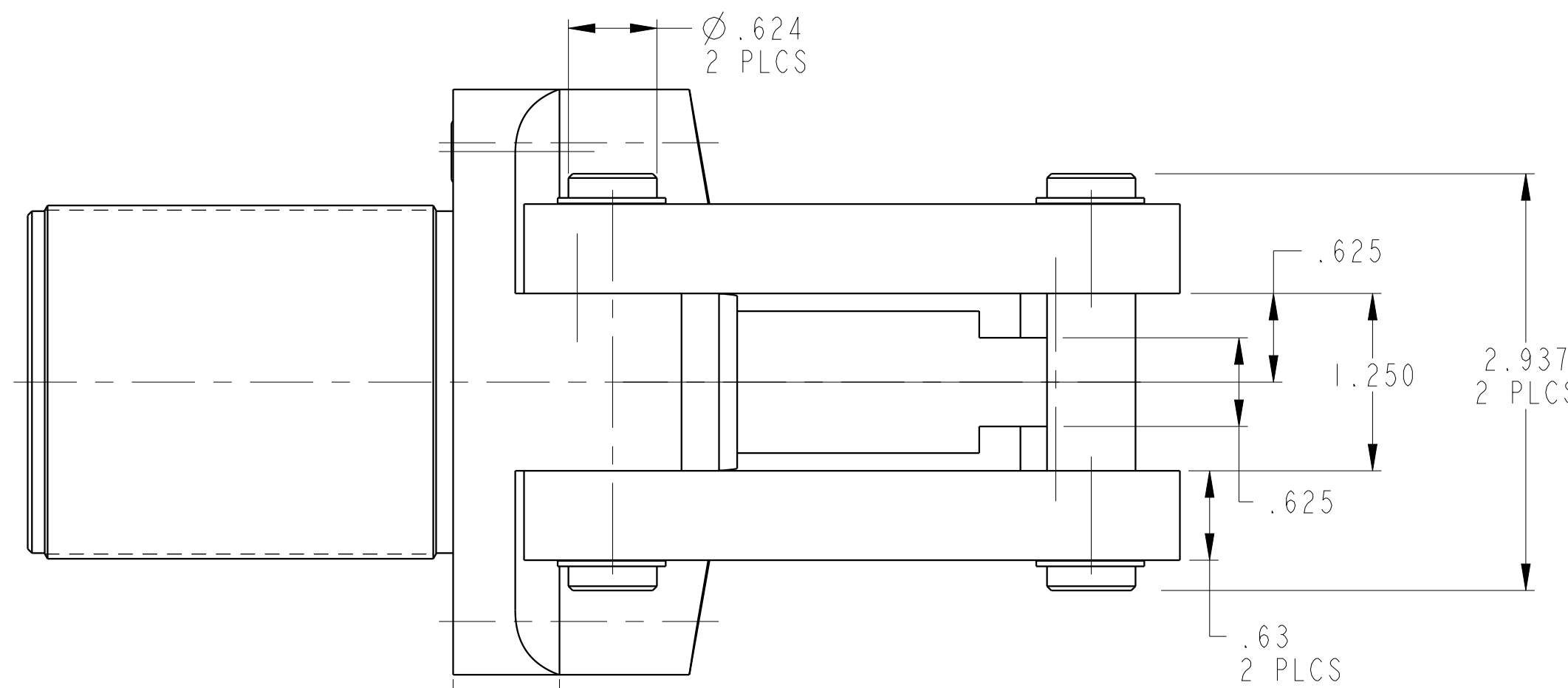
B

A

A

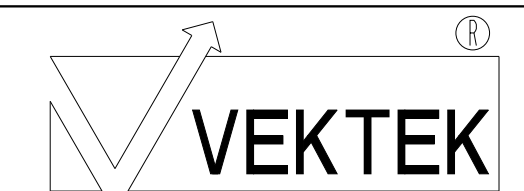


O-RING/MANIFOLD CLAMP PORT



ILC16611400 REV B ECN 5018

CAD CONTROL DRAWING



VEKTEK, INC.  
1334 E. SIXTH AVE. P.O. BOX 625  
EMPORIA, KS. 66801 U.S.A.

B	5018	RELEASE	RLK	2/3/23	16611400	F	LC, SA, 3000
REV	IN ACCORDANCE WITH ECN	EFFECTIVE DATE	REVISED BY	DATE	REFERENCE MODEL	REF REV	---
DRW BY:	K. ROEMER	DRAWING STATUS: Released			TOLERANCES DO NOT APPLY		SIZE
DATE:	07-06-06	PRODUCTION APPROVED FOR RELEASED STATUS ONLY			DIMENSIONS ARE NOMINAL		D ILC16611400 REV B

SHEET 1 OF 1