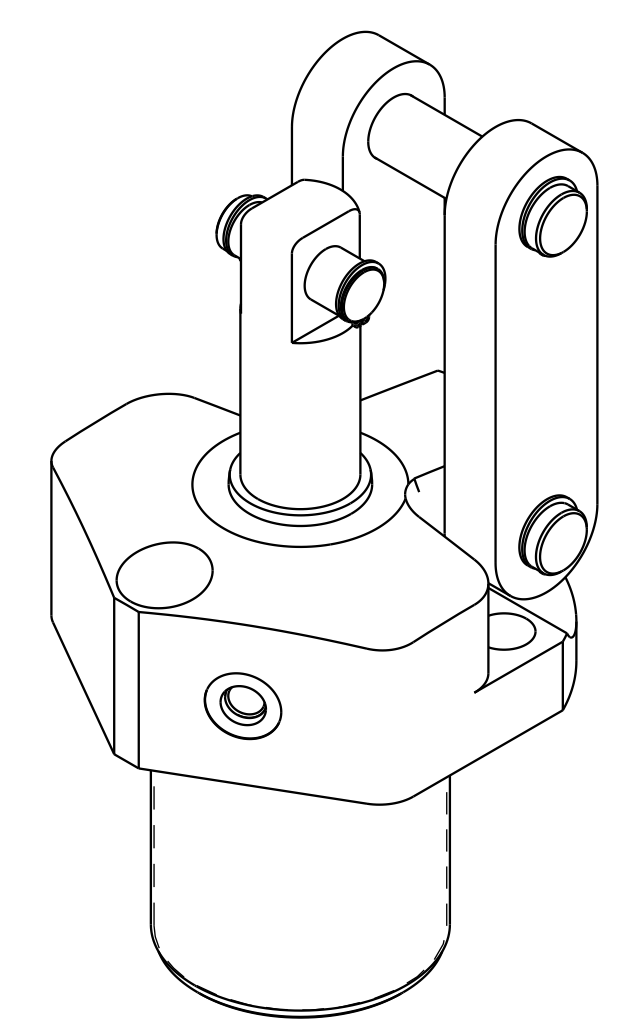
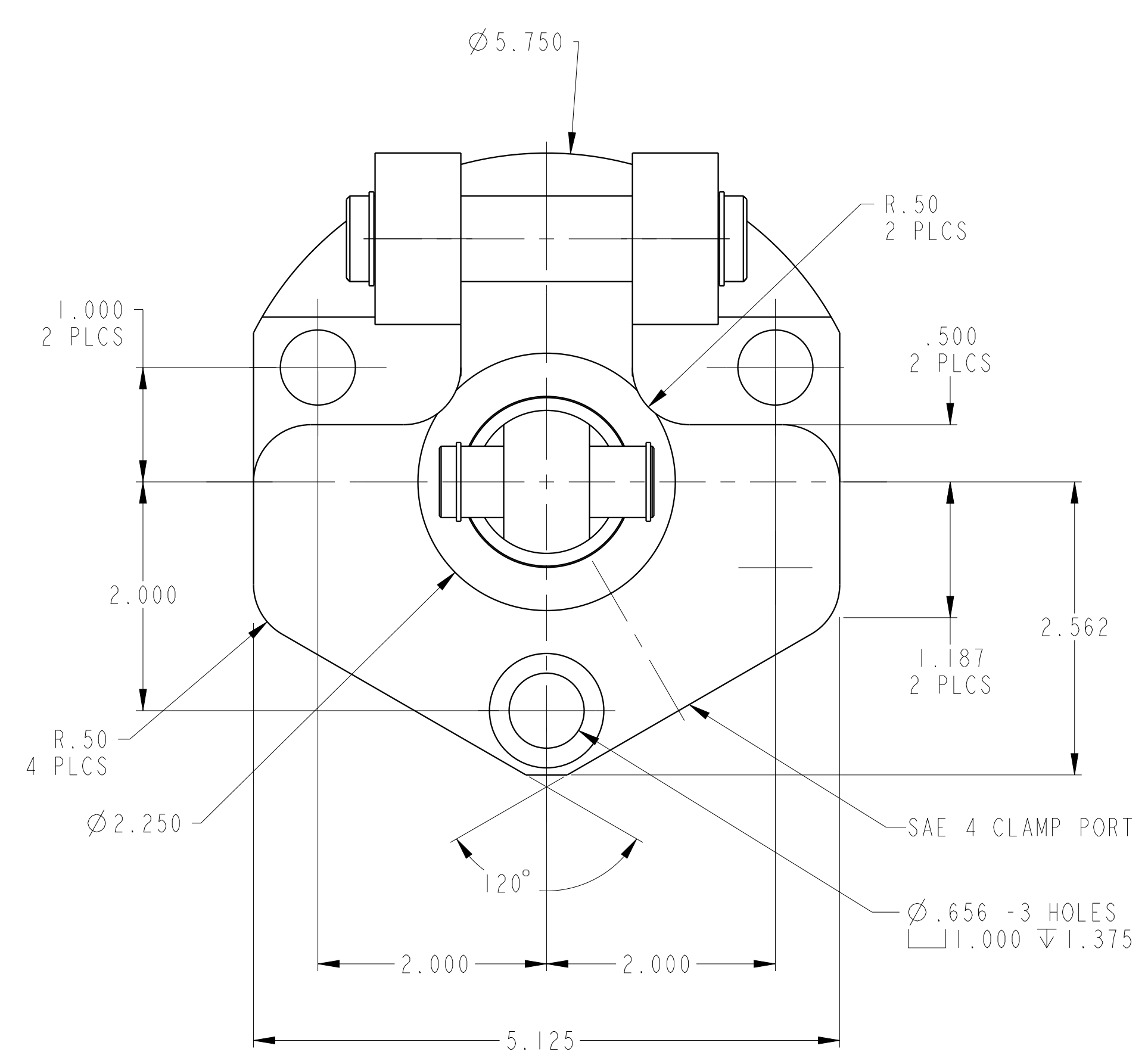


ILC16611600 REV B ECN 5018



CAD CONTROL DRAWING

VEKTEK
 VEKTEK, INC.
 1334 E. SIXTH AVE. P.O. BOX 625
 EMPORIA, KS. 66801 U.S.A.

B	5018	RELEASE	RLK	2/3/23	16611600	F	LC, SA, 5000
REV	IN ACCORDANCE WITH ECN	EFFECTIVE DATE	REVISED BY	DATE	REFERENCE MODEL	REF REV	---
DRW BY:	DRAWING STATUS: Released			TOLERANCES DO NOT APPLY	SIZE	ILC16611600 REV B	
DATE:	PRODUCTION APPROVED FOR RELEASED STATUS ONLY			DIMENSIONS ARE NOMINAL		FORM FEG036, Rev. B	