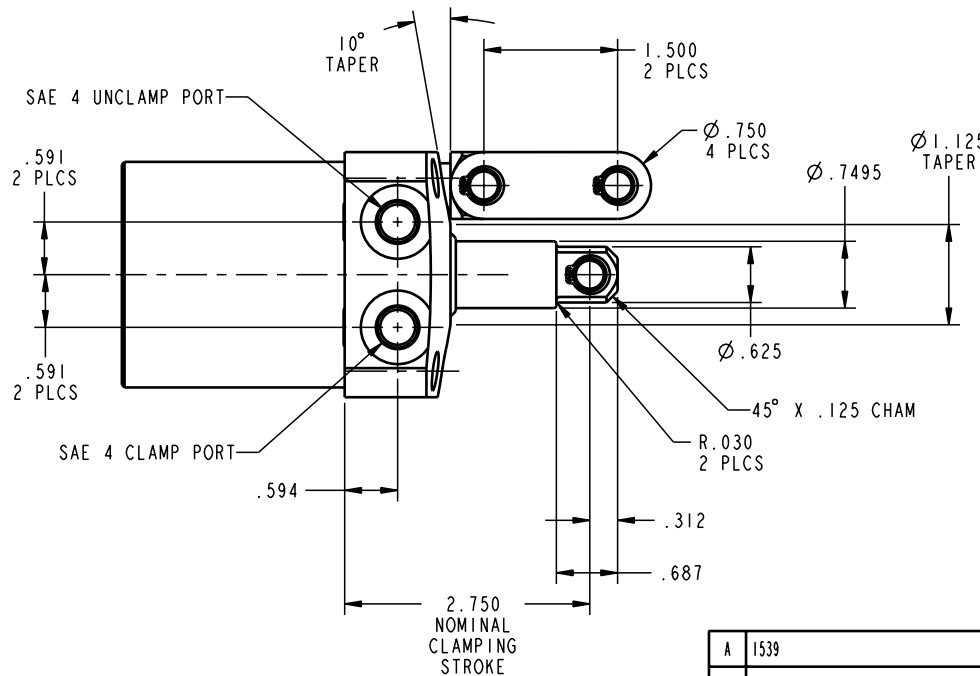
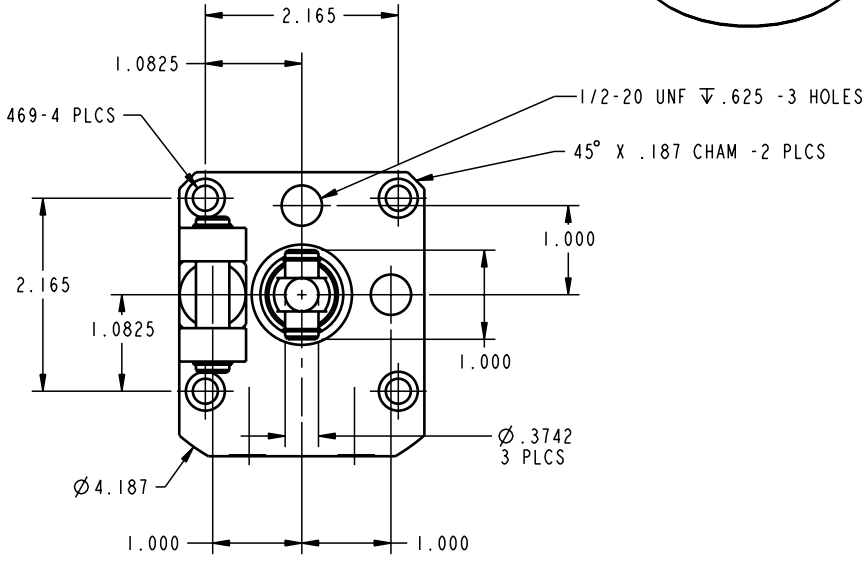
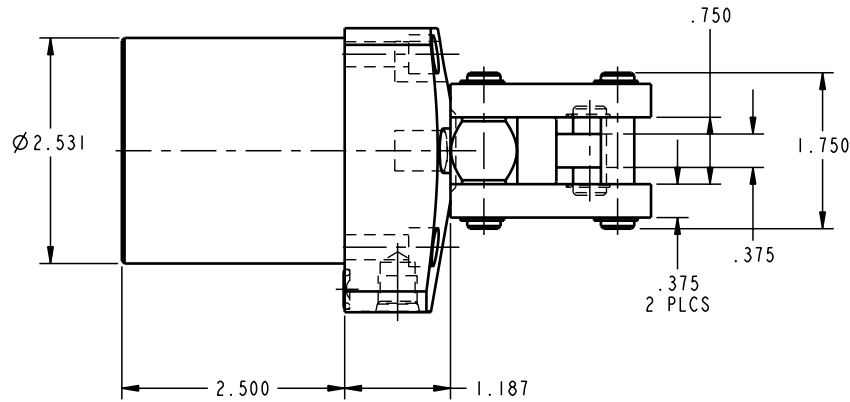
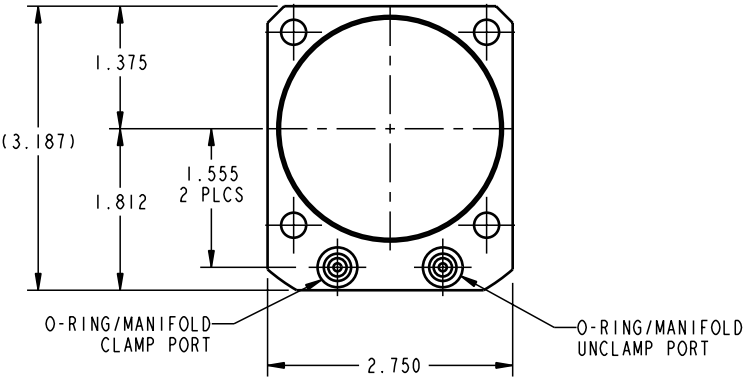


ILC16621502 REV A ECN 1539



|  |  |                          |                 |
|--|--|--------------------------|-----------------|
| <b>CAD CONTROL DRAWING</b>   |  |                          |                 |
| VEKTEK, INC.<br>1334 E. SIXTH AVE. P.O. BOX 625<br>EMPORIA, KS. 66801 U.S.A. |  | LC, LPRESS, 1100, DA, LH |                 |
| A 1539   | RELEASE                                      | K. ROEMER                | 08-10-06        |
| REV IN ACCORDANCE WITH ECN   | EFFECTIVE DATE                               | REVISED BY               | DATE            |
| DRW BY: K. ROEMER  | <b>DRAWING STATUS: Released</b>              |                          | REFERENCE MODEL |
| DATE: 08-10-06   | PRODUCTION APPROVED FOR RELEASED STATUS ONLY |                          | REF REV         |
| TOLERANCES DO NOT APPLY<br>DIMENSIONS ARE NOMINAL                            |  | SIZE                     | REV             |
|  |  | D                        | ILC16621502 A   |
|  |  | FORM FEG036, Rev. A      |                 |