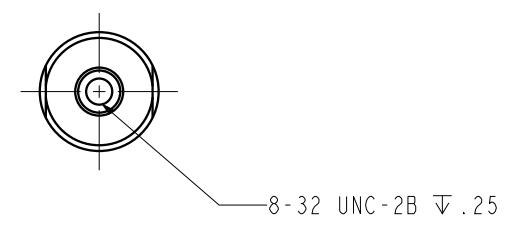
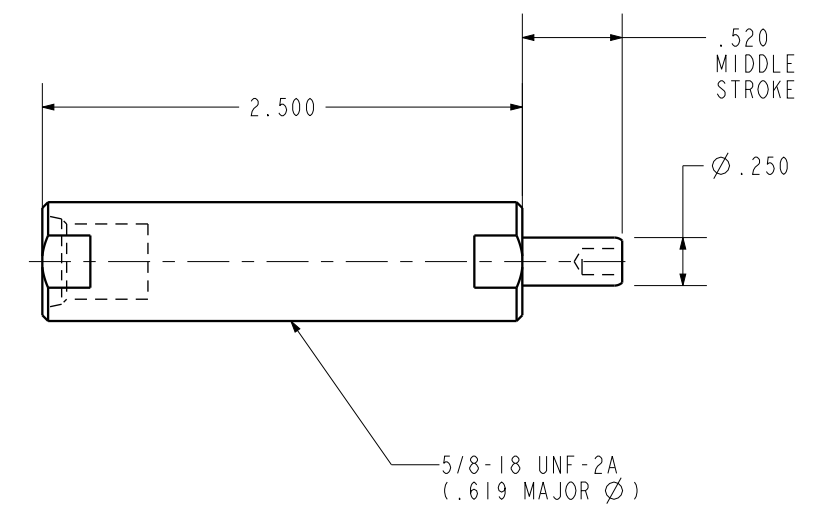
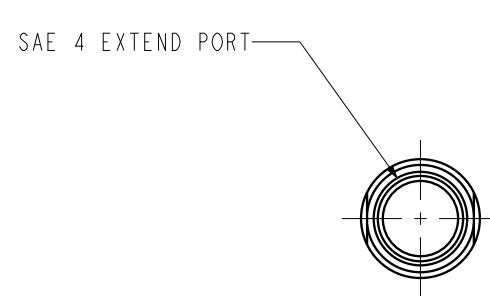



ILC20010407 REV C ECN 2920



CAD CONTROL DRAWING



VEKTEK, INC.
1334 E. SIXTH AVE. P.O. BOX 625
EMPORIA, KS. 66801 U.S.A.

C	2920	RELEASE	JDW	09/18/15	20010407	H	CYL, TB, SA, .75 STRK, 550
REV	IN ACCORDANCE WITH ECN	EFFECTIVE DATE	REVISED BY	DATE	REFERENCE MODEL	REF REV	
DRW BY:	K. ROEMER	DRAWING STATUS: Released			TOLERANCES DO NOT APPLY DIMENSIONS ARE NOMINAL		SIZE B
DATE:	08-19-02	PRODUCTION APPROVED FOR RELEASED STATUS ONLY			ILC20010407	REV C	FORM FEG036, Rev. B