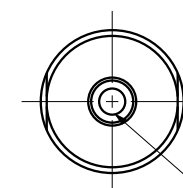
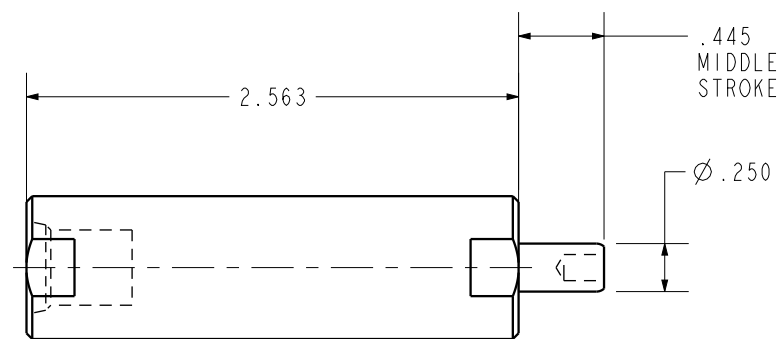
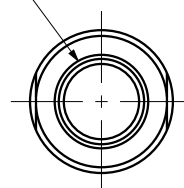


ILC20010507 REV B ECN 2825

SAE 4 EXTEND PORT



8-32 UNC-2B ∇ .25

3/4-16 UNF-2A
(.744 MAJOR Ø)

CAD CONTROL
DRAWING



VEKTEK, INC.
1334 E. SIXTH AVE. P.O. BOX 625
EMPORIA, KS. 66801 U.S.A.

B	2825	RELEASE	JDW	04/13/15	20010507	H	CYL, TB, SA, .75 STRK, 980
REV	IN ACCORDANCE WITH ECN	EFFECTIVE DATE	REVISED BY	DATE	REFERENCE MODEL	REF REV	
DRW BY:	K. ROEMER	DRAWING STATUS: Released			TOLERANCES DO NOT APPLY DIMENSIONS ARE NOMINAL		SIZE B
DATE:	08-19-02	PRODUCTION APPROVED FOR RELEASED STATUS ONLY			ILC20010507		REV B

FORM FEG036, Rev. B

SHEET 1 OF 1