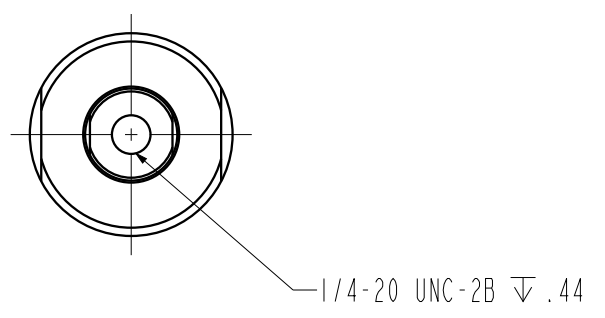
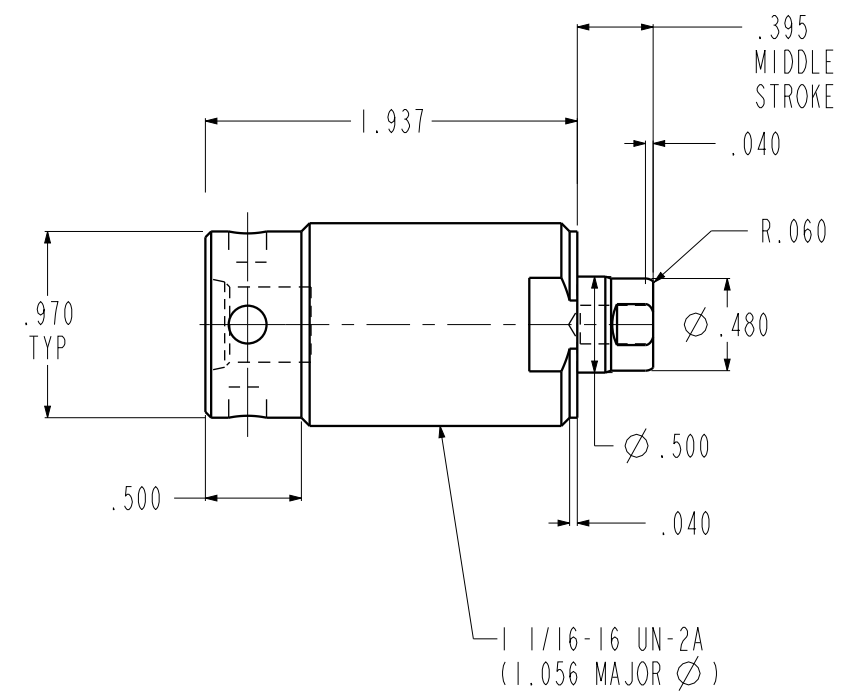
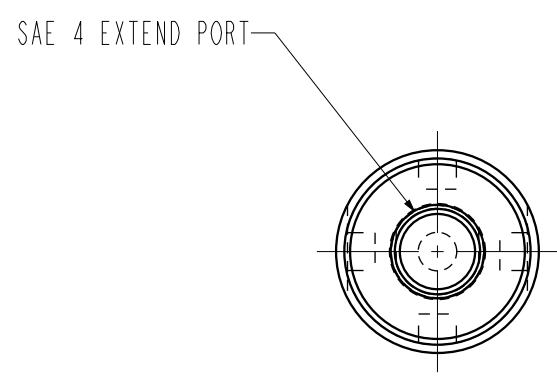


ILC20010802 REV B ECN 2825



CAD CONTROL DRAWING



VEKTEK, INC.
1334 E. SIXTH AVE. P.O. BOX 625
EMPORIA, KS. 66801 U.S.A.

B	2825	RELEASE	JDW	04/13/15	20010802	G	CYL, TB, SA, .25 STRK, 2200
REV	IN ACCORDANCE WITH ECN	EFFECTIVE DATE	REVISED BY	DATE	REFERENCE MODEL	REF REV	
DRW BY:	K. ROEMER	DRAWING STATUS: Released			TOLERANCES DO NOT APPLY DIMENSIONS ARE NOMINAL		SIZE B
DATE:	08-19-02	PRODUCTION APPROVED FOR RELEASED STATUS ONLY					ILC20010802 REV B

FORM FEG036, Rev. B