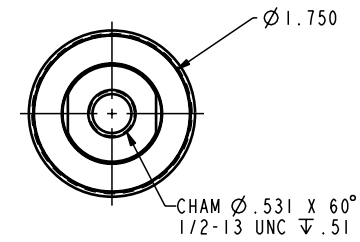
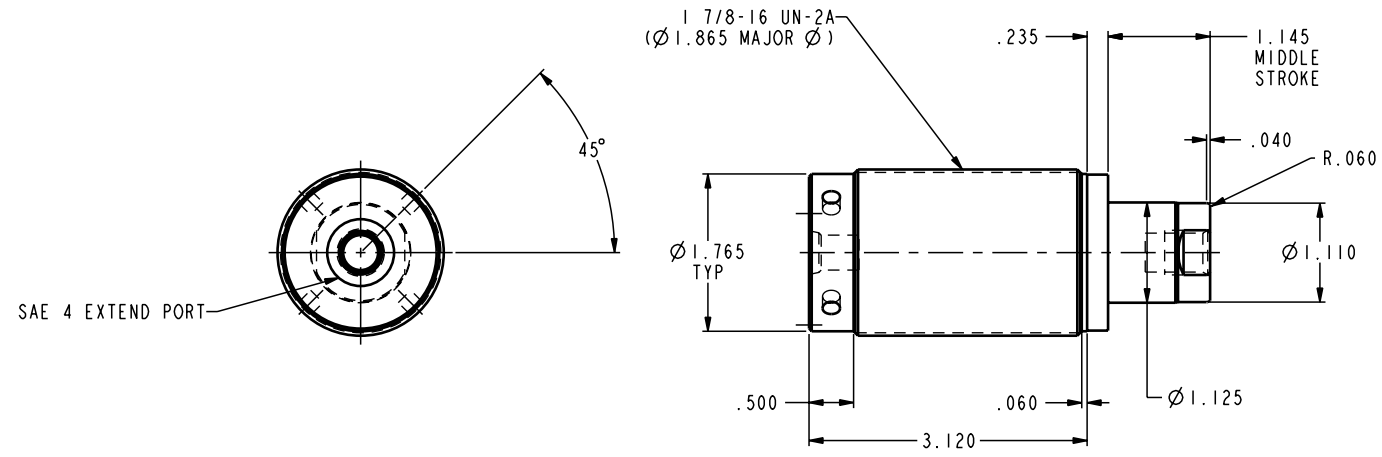


ILC20011504 REV A ECN 704



CAD CONTROL DRAWING



VEKTEK, INC.
1334 E. SIXTH AVE. P.O. BOX 625
EMPORIA, KS. 66801 U.S.A.

REV	704	RELEASE	K. ROEMER	03-29-05	20011504	G	CYL, TB, SA, 1.5 STRK, 8800
REV	IN ACCORDANCE WITH ECN	EFFECTIVE DATE	REVISED BY	DATE	REFERENCE MODEL	REF REV	
DRW BY:	K. ROEMER	DRAWING STATUS: Released			TOLERANCES DO NOT APPLY	SIZE	REV
DATE:	08-19-02	PRODUCTION APPROVED FOR RELEASED STATUS ONLY			DIMENSIONS ARE NOMINAL	D	ILC20011504 A

FORM FEG036, Rev. A